

ClaytonGO: Foundation Plan Summary

Order Number: **N/A**
 Model Number: **941-VIS32784B**
 Home Building Facility: **941**

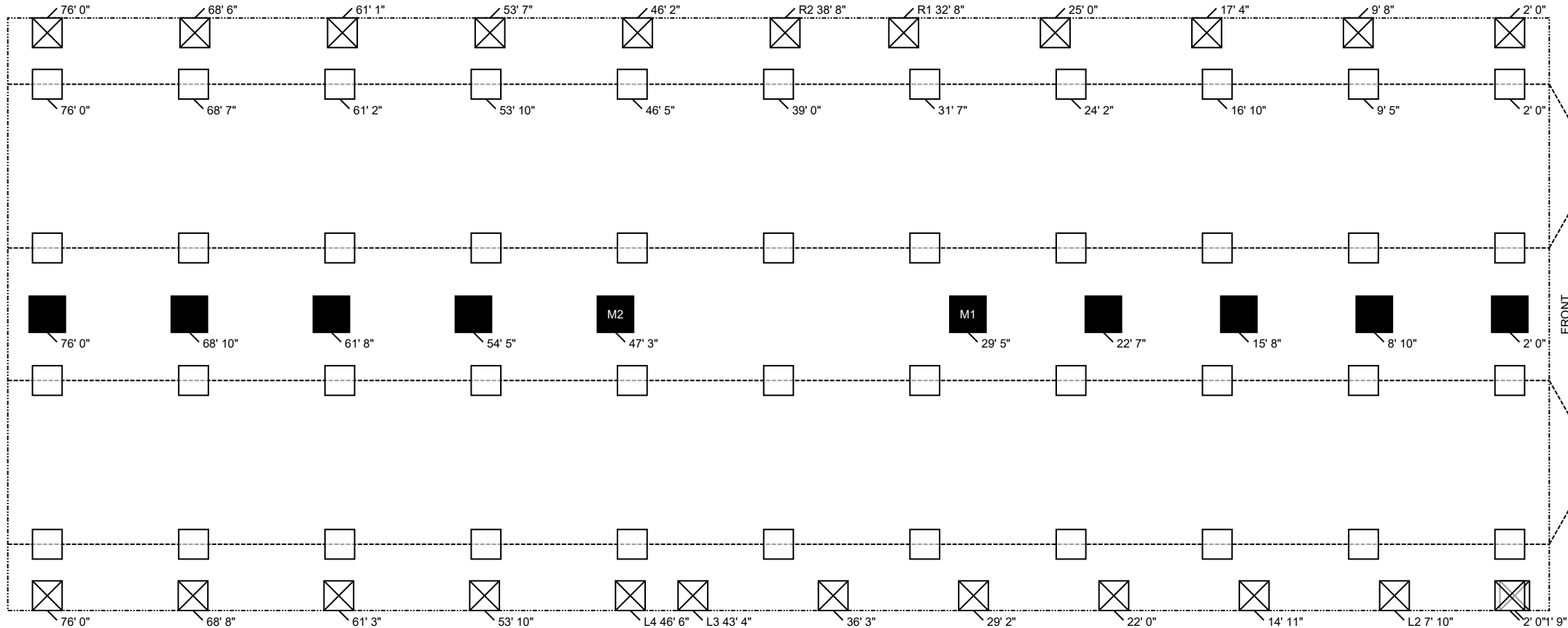
Home Width: **30 FT 0 IN**
 Home Length: **78 FT 0 IN**
 Outrigger Length (O.R.): **40.25 IN**
 Chassis Spacing: **99.5 IN**

Roof Load: **20 PSF**
 Soil Bearing Cap: **1500 PSF**
 Min. I-Beam Size: **8 IN**
 Calculated Eave/Overhang: **12 IN**

Use this QR Code to access DAPIA approved tables referenced within this design. Hover your iPhone camera over the code. For Android and other devices, download a QR Code reader.
Questions? Email sitecompletionq&a@claytonhomes.com



TABLE 1: FRAME PIERS			TABLE 2: EXTERIOR PIERS			TABLE 3: MARRIAGE WALL PIERS		
Pier Spacing	Pier Configuration	Footer Size	Pier ID	Pier Configuration	Footer Size	Pier ID	Pier Configuration	Footer Size
TYP. 7 FT 5 IN MAX. 8 FT 0 IN (Table 7b)	Single stacked Single stacked	18 IN x 18 IN x 6 IN 20 IN x 20 IN x 6 IN	L1, L2, L3, L4 R1, R2 (Table 7b)	Single stacked Single stacked	18 IN x 18 IN x 6 IN 18 IN x 18 IN x 6 IN	M1, M2, P@8'oc (Table 5c)	Single stacked	22 IN x 22 IN x 7 IN



NOTES:

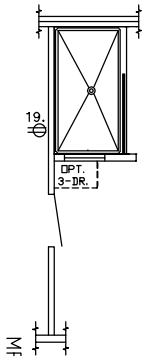
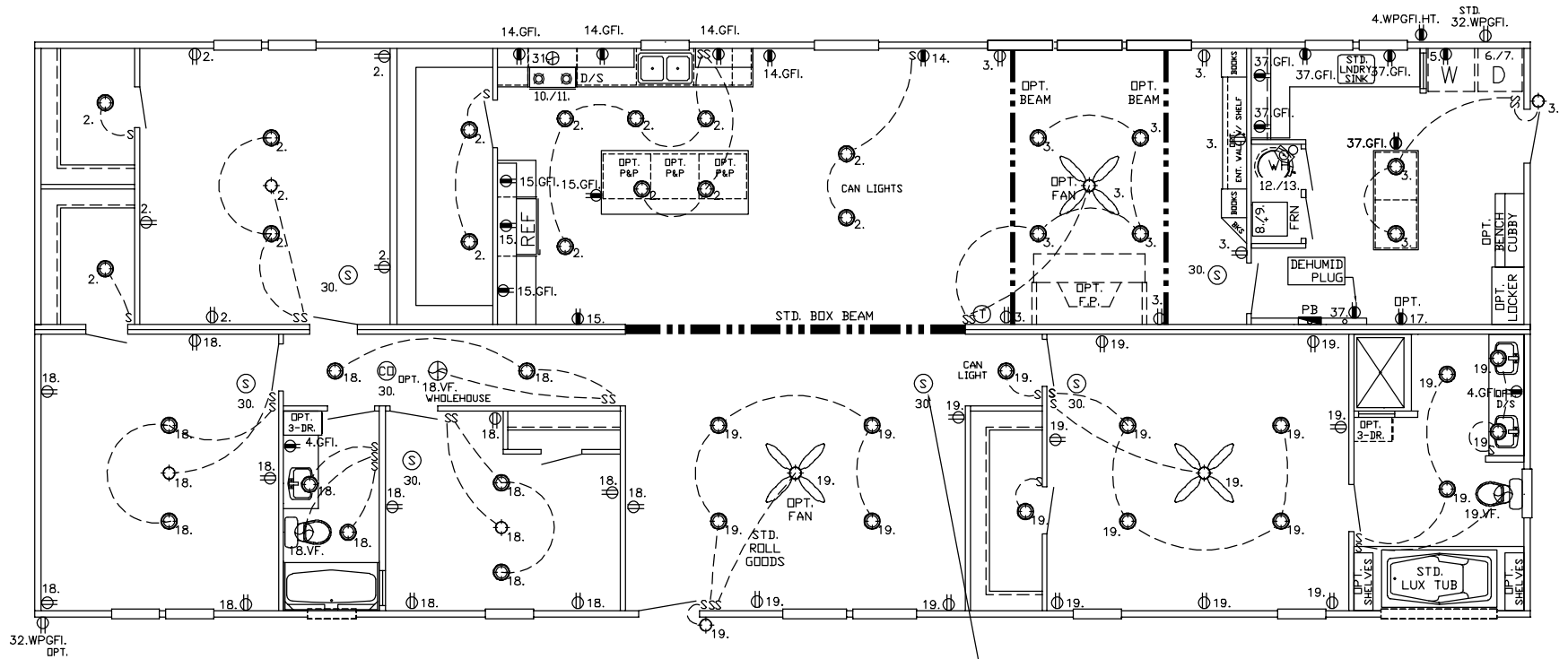
- FROST PROTECTION WILL BE PROVIDED BY PLACING FOOTERS BELOW FROST DEPTH OF 36 INCHES PER (FIGURE 5A) OR FROM LAHJ. Frost depth for interior footers may be taken as half with R5 skirting per (Table 4a) [3285.312(b)]
- PLACE SUPPORTS AT ALL EXTERIOR OPENINGS & PERIMETER BLOCK ALONG EXTERIOR SIDEWALLS (P), AT 96 INCH ON CENTER. & ALONG MARRIAGE WALL(S) AT 96 INCHES ON CENTER.
- ALL FOOTERS WILL BE POURED CONCRETE. ALL SINGLE STACKED PIERS WILL HAVE A MINIMUM FOOTER THICKNESS OF 7 INCHES with footer depth extending below frost depth using 3,000 PSI minimum concrete (table 10A) (table 8)
- THIS PIER LAYOUT HAS BEEN DERIVED USING PE SEALED & DAPIA APPROVED INSTALLATION MANUAL AS OUTLINED ABOVE. PLEASE SEE INSTALLATION MANUAL FOR PE SEAL AND DAPIA APPROVAL. (Reference to Clayton Homes DAPIA approved Installation manual) [Reference to Federal Statutes 24 CFR Part 3280, 3285 or 3286]



08/02/2023
3:40PM

CARBON MONOXIDE (CO) ALARMS ARE ONLY REQUIRED WHEN ONE OR MORE OF THE FOLLOWING ARE PROVIDED BY THE HOME BUILDING FACILITY (HBF):

1. THE HOME IS EQUIPPED WITH A FUEL BURNING APPLIANCE INSTALLED AT THE HBF.
2. THE HOME HAS BEEN DESIGNED FROM THE HBF FOR AN ATTACHED GARAGE ADDITION.
3. THE HOME HAS BEEN DESIGNED FROM THE HBF WITH A BASEMENT ACCESS THROUGH THE FLOOR.



MP-32.VIS32784B2

REF. EL-24 FOR NOTES & CIRCUITS

REF. PLN-11 FOR GENERAL NOTES

⊕ = RECEP. = 20AMP CIRCUIT = 12-2 WIRE (CIRCUITS BELOW)
CIRCUIT 37.

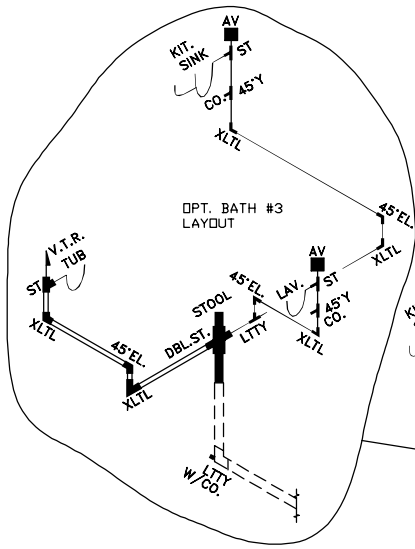
C:\ACADDBL-ZERO\VIS32784B.dwg

SOUTHERN HOMES
MODEL VIS32784B-78-4/32X78

08/02/2023

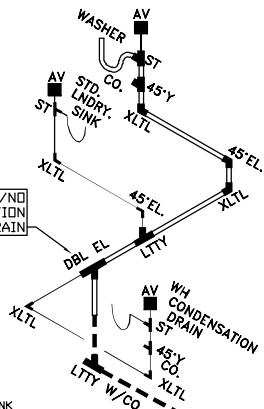
3:40PM

DRAIN LINES

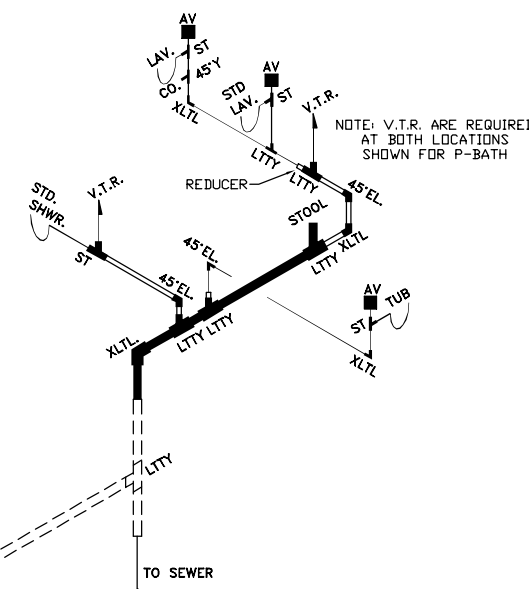


XLTL W/NO WH CONDENSATION DRAIN

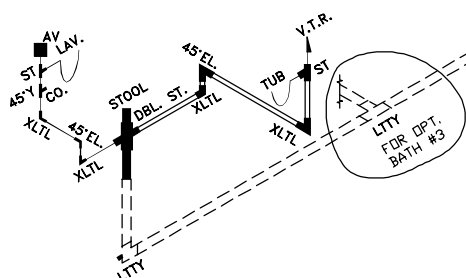
NOTE: KIT SINK TIES INTO OPT. BATH #3 WHEN OPTIONED IN



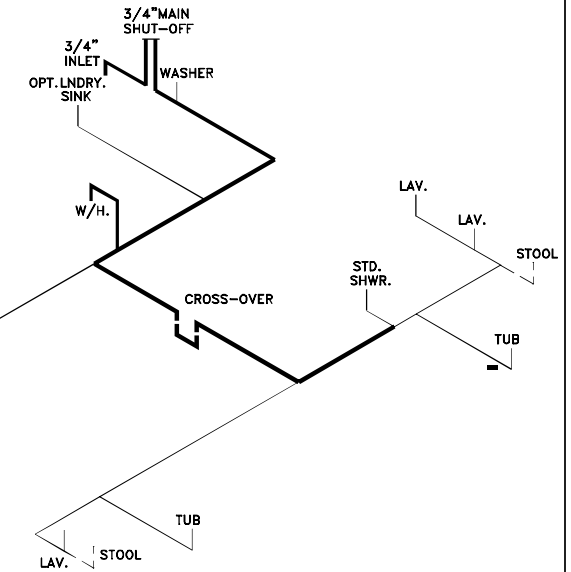
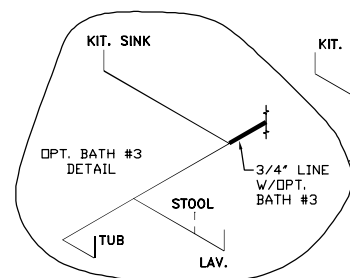
WH CONDENSATION DRAIN



NOTE: V.T.R. ARE REQUIRED AT BOTH LOCATIONS SHOWN FOR P-BATH



LTTY FOR OPT. BATH #3



WATER LINES

MP-32.VIS32784B3

OPT. LOOSE PLUMBING FOR OPT. 3RD BATH

LOOSE PLUMBING FOR FIELD INSTALL	SIZE	3'	3'	3'	3'	3'	3-1.5	3x3x2	3'	3-2	2'	2'	2'	2'	2'	2-1.5	1 1/2'	1 1/2'	1 1/2'	1 1/2'	CLEAN	CD.
ITEM	LTTY	XLTL	COUP	DBL.EL.	ST	REDUC	LTTY	PIPE	REDUC	LTTY	XLTL	COUP	PIPE	ST	REDUC	LTTY	XLTL	COUP	PIPE	OUT	PLUG	
QTY.	4		4			2	2	90'		1		2	30'		1					3		3

STD. LOOSE PLUMBING FOR FIELD INSTALL	SIZE	3'	3'	3'	3'	3-1.5	3x3x2	3'	3-2	2'	2'	2'	2'	2'	2-1.5	1 1/2'	1 1/2'	1 1/2'	1 1/2'	CLEAN	CD.
ITEM	LTTY	XLTL	COUP	DBL.EL.	ST	REDUC	LTTY	PIPE	REDUC	LTTY	XLTL	COUP	PIPE	ST	REDUC	LTTY	XLTL	COUP	PIPE	OUT	PLUG
QTY.	2		2			1	2	80'		1		2	30'		2					2	2

= 1 1/2" # = 2" # = 3" #	<p>FOR DRAIN LINES</p> <p>FOR ON-SITE DRAIN LINES</p> <p>FOR WATER LINES</p>	<p>DRAIN, & WATER PIPING TYP. NOTE: DWGS. NOT TO SCALE</p> <p>TYP. NOTE FOR DRAIN LINES: STOOL TRAP ARM LESS THAN 6'-0" DASHED LINES ARE FIELD INSTALLED</p> <p>TYP. NOTE FOR WATER LINES: COLD AS SHOWN, FOR HOT LINES DELETE STOOL INLET & SHUTOFF</p>	<p>TYP. NOTES: REFER TO PLN-11 FOR GEN. NOTES SEE DAPIA FOR ANY DETAILS NOT SHOWN ON DRAWINGS.</p>
--------------------------------	--	--	--

C:\ACAD\BBL-ZERON\VIS32784B.dwg

SOUTHERN HOMES
MODEL VIS32784B-78-4/32X78

21.25' MDL 3/4
56.083' MDL 1/2
0.91 VOL (GAL)