

### ClaytonGO: Foundation Plan Summary

Order Number: **N/A**  
 Model Number: **941-VIS28603B**  
 Home Building Facility: **941**

Home Width: **27 FT 4 IN**  
 Home Length: **60 FT 0 IN**  
 Outrigger Length (O.R.): **32.25 IN**  
 Chassis Spacing: **99.5 IN**

Roof Load: **20 PSF**  
 Soil Bearing Cap: **1500 PSF**  
 Min. I-Beam Size: **10 IN**  
 Calculated Eave/Overhang: **12 IN**

Use this QR Code to access DAPIA approved tables referenced within this design. Hover your iPhone camera over the code. For Android and other devices, download a QR Code reader.  
**Questions? Email [sitecompletionq&a@claytonhomes.com](mailto:sitecompletionq&a@claytonhomes.com)**



**TABLE 1: FRAME PIERS**

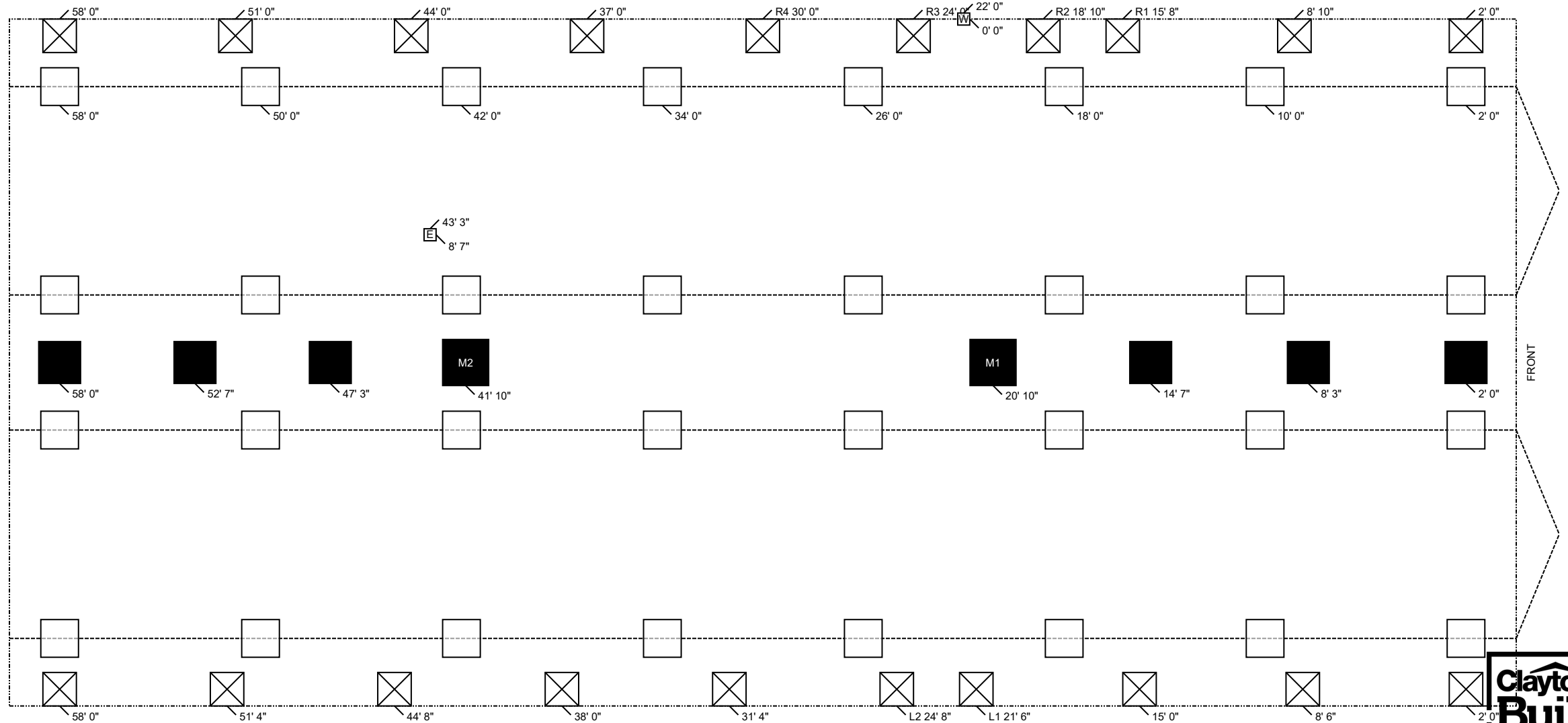
Pier Spacing	Pier Configuration	Footer Size
TYP. 8 FT 0 IN	Single stacked	18 IN x 18 IN x 6 IN
MAX. 8 FT 0 IN (Table 7b)	Single stacked	18 IN x 18 IN x 6 IN

**TABLE 2: EXTERIOR PIERS**

Pier ID	Pier Configuration	Footer Size
L1, L2	Single stacked	16 IN x 16 IN x 6 IN
R1, R2, R3, R4	Single stacked	16 IN x 16 IN x 6 IN

**TABLE 3: MARRIAGE WALL PIERS**

Pier ID	Pier Configuration	Footer Size
M1, M2	Single stacked	22 IN x 22 IN x 7 IN
P@8'oc	Single stacked	20 IN x 20 IN x 6 IN



### ClaytonGO: Foundation Plan Summary

Order Number: **N/A**  
Model Number: **941-VIS28603B**  
Home Building Facility: **941**

Home Width: **27 FT 4 IN**  
Home Length: **60 FT 0 IN**  
Outrigger Length (O.R.): **32.25 IN**  
Chassis Spacing: **99.5 IN**

Roof Load: **20 PSF**  
Soil Bearing Cap: **1500 PSF**  
Min. I-Beam Size: **10 IN**  
Calculated Eave/Overhang: **12 IN**

Use this QR Code to access DAPIA approved tables referenced within this design. Hover your iPhone camera over the code. For Android and other devices, download a QR Code reader. **Questions? Email [sitecompletionq&a@claytonhomes.com](mailto:sitecompletionq&a@claytonhomes.com)**



UTILITIES		LOCATION	
ID	UTILITY	LEFT	DOWN
E	Elec Entrance	43 FT 3 IN	8 FT 7 IN
W	Water Inlet	22 FT 0 IN	0 FT 0 IN

**NOTES:**

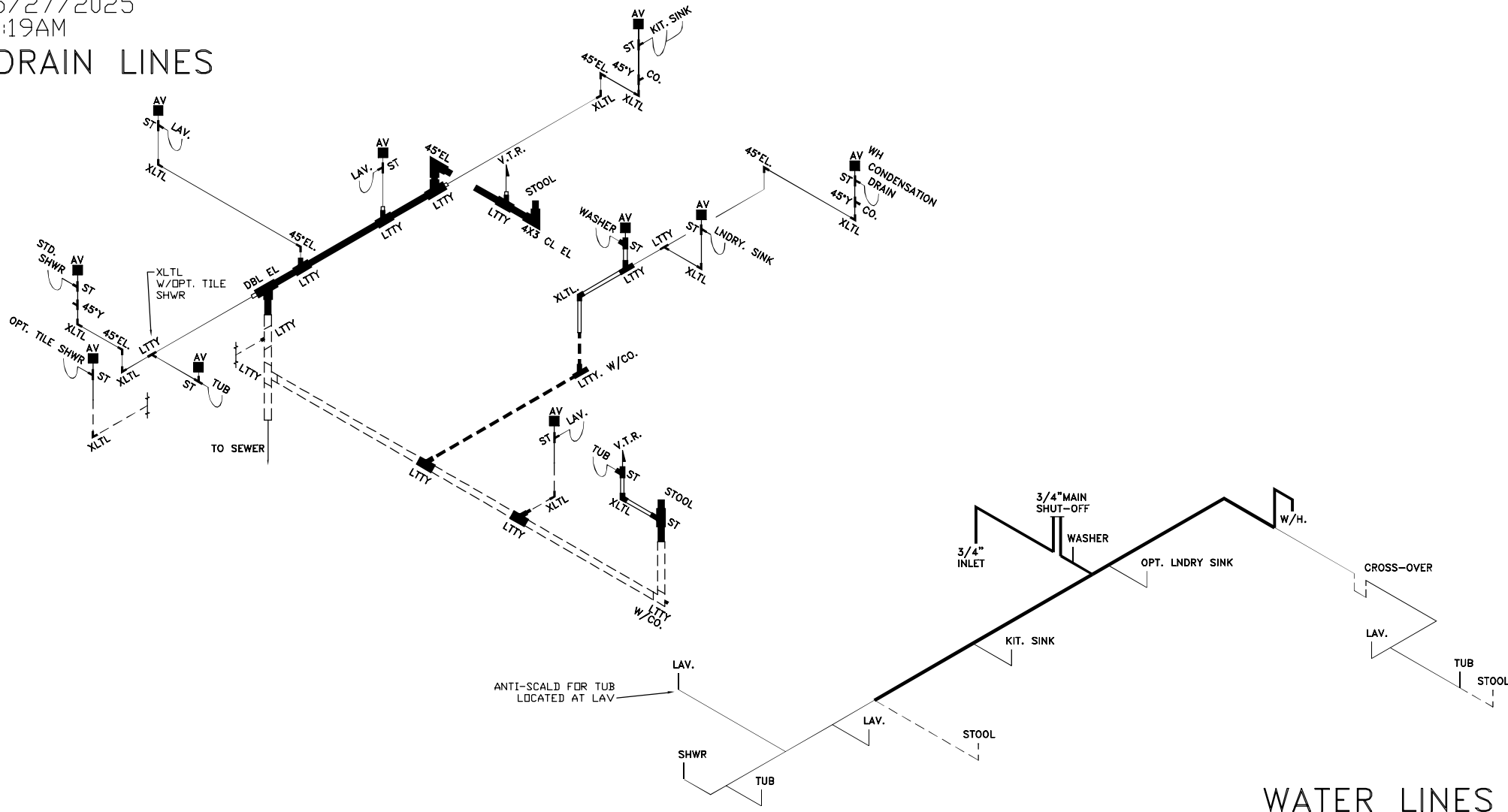
1. FROST PROTECTION WILL BE PROVIDED BY PLACING FOOTERS BELOW FROST DEPTH OF 36 INCHES PER (FIGURE 5A) OR FROM LAHJ. Frost depth for interior footers may be taken as half with R5 skirting per (Table 4a) [3285.312(b)]
2. PLACE SUPPORTS AT ALL EXTERIOR OPENINGS & PERIMETER BLOCK ALONG EXTERIOR SIDEWALLS (P), AT 96 INCH ON CENTER. & ALONG MARRIAGE WALL(S) AT 96 INCHES ON CENTER.
3. ALL FOOTERS WILL BE POURED CONCRETE. ALL SINGLE STACKED PIERS WILL HAVE A MINIMUM FOOTER THICKNESS OF 7 INCHES with footer depth extending below frost depth using 3,000 PSI minimum concrete (table 10A) (table 8)
4. THIS PIER LAYOUT HAS BEEN DERIVED USING PE SEALED & DAPIA APPROVED INSTALLATION MANUAL AS OUTLINED ABOVE. PLEASE SEE INSTALLATION MANUAL FOR PE SEAL AND DAPIA APPROVAL. (Reference to Clayton Homes DAPIA approved Installation manual) [Reference to Federal Statutes 24 CFR Part 3280, 3285 or 3286]





05/27/2025  
10:19AM

# DRAIN LINES



# WATER LINES

MP-28.VIS28603B.3

LOOSE PLUMBING FOR FIELD INSTALL	SIZE	3'	3'	3'	3'	3-1.5	3x3x2	3'	3-2	2'	2'	2'	2'	2'	2-1.5	1 1/2"	1 1/2"	1 1/2"	1 1/2"	CLEAN	CO.
	ITEM	LTTY	XLTL	COUP	DBL.EL	ST	REDUC	LTTY	PIPE	REDUC	LTTY	XLTL	COUP	PIPE	ST	REDUC	LTTY	XLTL	COUP	PIPE	OUT
	QTY.	2		2			1	3	50'		1		20'		3		2		30'	2	2
DRAIN, & WATER PIPING TYP. NOTE: DWGS. NOT TO SCALE TYP. NOTES: REFER TO PLN-11 FOR GEN. NOTES SEE DAPIA FOR ANY DETAILS NOT SHOWN ON DRAWINGS.																					
TYP. NOTE FOR DRAIN LINES: STOOL TRAP ARM LESS THAN 6'-0" DASHED LINES ARE FIELD INSTALLED																					
TYP. NOTE FOR WATER LINES: COLD AS SHOWN, FOR HOT LINES DELETE STOOL INLET & SHUTOFF																					

C:\ACADDBL-ZERO\VIS28603B.dwg

28.0' MDL 3/4  
27.0' MDL 1/2  
0.76 VOL (GAL)

**SOUTHERN HOMES**  
MODEL VIS28603B-60-3/28X60