

ClaytonGO: Foundation Plan Summary

Order Number: **N/A**
 Model Number: **941-VIS28483A**
 Home Building Facility: **941**

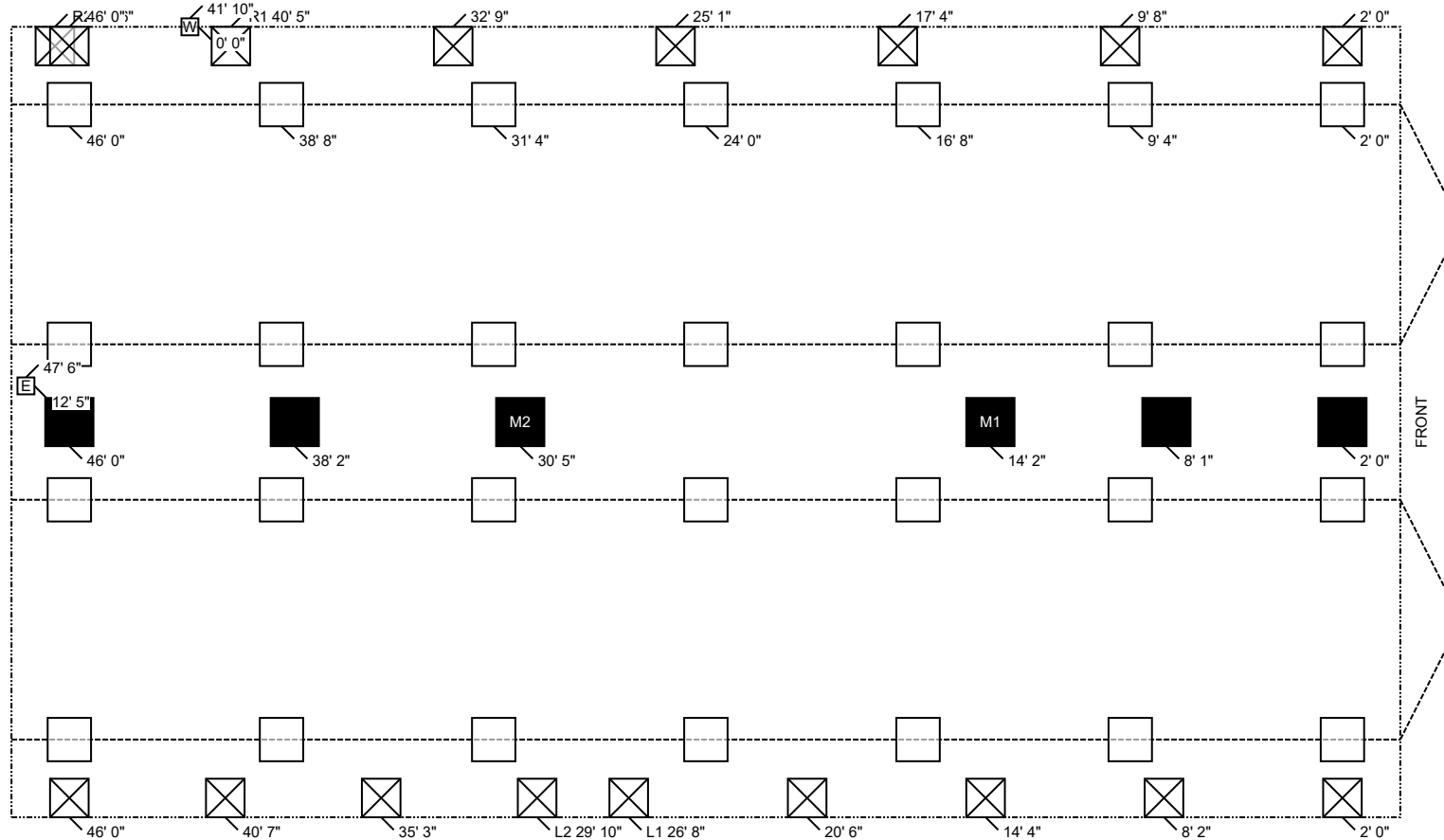
Home Width: **27 FT 4 IN**
 Home Length: **48 FT 0 IN**
 Outrigger Length (O.R.): **32.25 IN**
 Chassis Spacing: **99.5 IN**

Roof Load: **20 PSF**
 Soil Bearing Cap: **1500 PSF**
 Min. I-Beam Size: **8 IN**
 Calculated Eave/Overhang: **12 IN**

Use this QR Code to access DAPIA approved tables referenced within this design. Hover your iPhone camera over the code. For Android and other devices, download a QR Code reader.
Questions? Email sitecompletionq&a@claytonhomes.com



TABLE 1: FRAME PIERS		TABLE 2: EXTERIOR PIERS		TABLE 3: MARRIAGE WALL PIERS	
Pier Spacing	Pier Configuration	Footer Size	Pier ID	Pier Configuration	Footer Size
TYP. 7 FT 4 IN MAX. 8 FT 0 IN (Table 7b)	Single stacked Single stacked	18 IN x 18 IN x 6 IN 18 IN x 18 IN x 6 IN	L1, L2 R1, R2 (Table 7b)	Single stacked Single stacked	M1, M2, P@8'oc (Table 5b)
					20 IN x 20 IN x 6 IN



NOTES:

- FROST PROTECTION WILL BE PROVIDED BY PLACING FOOTERS BELOW FROST DEPTH OF 36 INCHES PER (FIGURE 5A) OR FROM LAHJ. Frost depth for interior footers may be taken as half with R5 skirting per (Table 4a) [3285.312(b)]
- PLACE SUPPORTS AT ALL EXTERIOR OPENINGS & PERIMETER BLOCK ALONG EXTERIOR SIDEWALLS (P), AT 96 INCH ON CENTER. & ALONG MARRIAGE WALL(S) AT 96 INCHES ON CENTER.
- ALL FOOTERS WILL BE POURED CONCRETE. ALL SINGLE STACKED PIERS WILL HAVE A MINIMUM FOOTER THICKNESS OF 6 INCHES with footer depth extending below frost depth using 3,000 PSI minimum concrete (table 10A) (table 8)
- THIS PIER LAYOUT HAS BEEN DERIVED USING PE SEALED & DAPIA APPROVED INSTALLATION MANUAL AS OUTLINED ABOVE. PLEASE SEE INSTALLATION MANUAL FOR PE SEAL AND DAPIA APPROVAL. (Reference to Clayton Homes DAPIA approved Installation manual) [Reference to Federal Statutes 24 CFR Part 3280, 3285 or 3286]



ClaytonGO: Foundation Plan Summary

Order Number: **N/A**
Model Number: **941-VIS28483A**
Home Building Facility: **941**

Home Width: **27 FT 4 IN**
Home Length: **48 FT 0 IN**
Outrigger Length (O.R.): **32.25 IN**
Chassis Spacing: **99.5 IN**

Roof Load: **20 PSF**
Soil Bearing Cap: **1500 PSF**
Min. I-Beam Size: **8 IN**
Calculated Eave/Overhang: **12 IN**

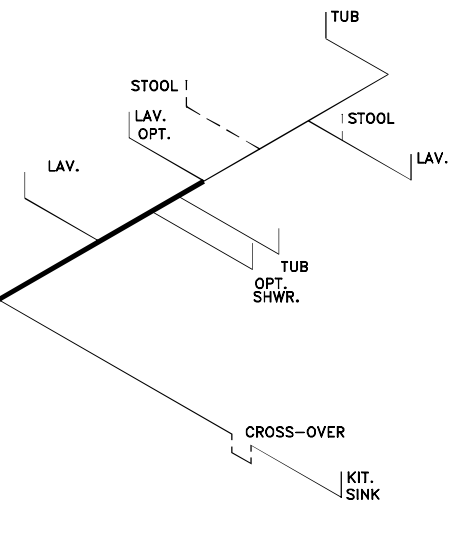
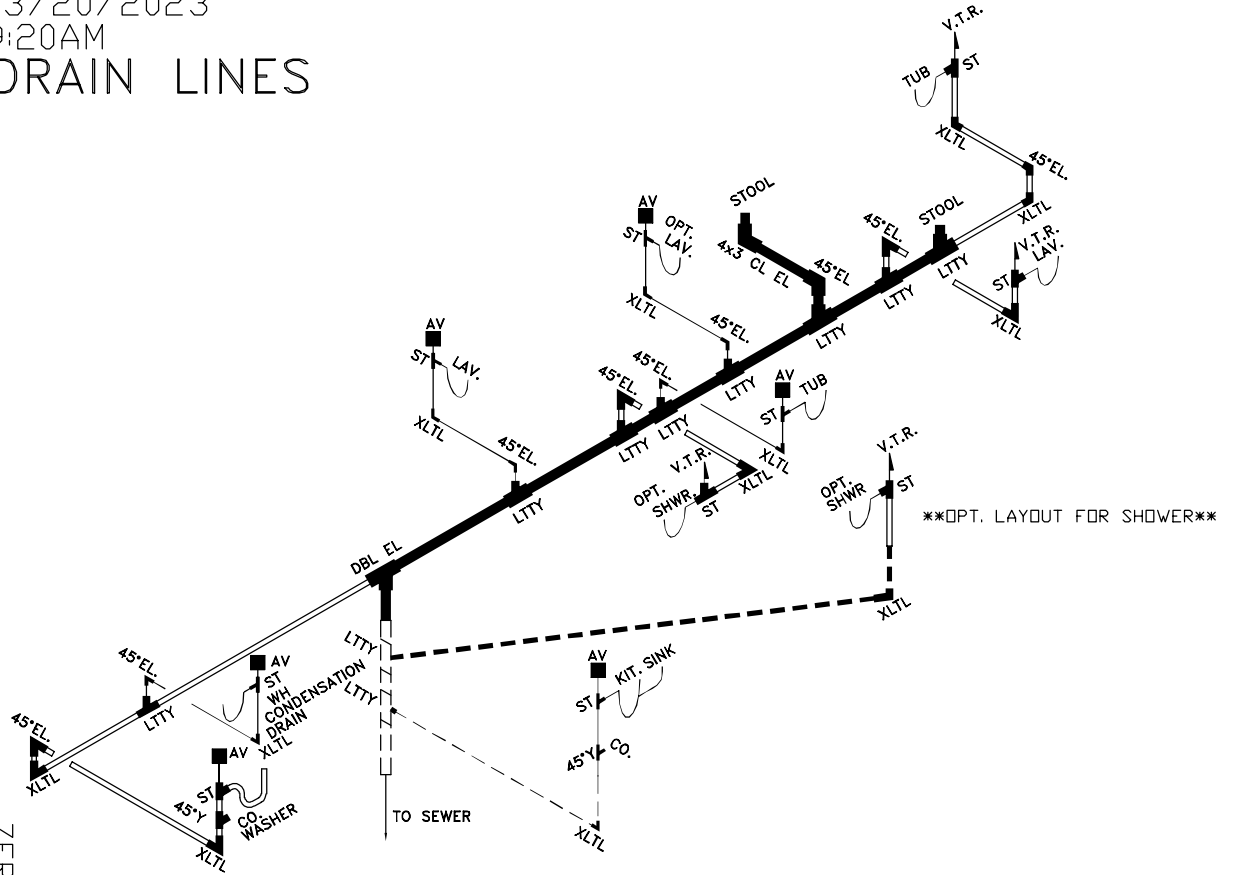
Use this QR Code to access DAPIA approved tables referenced within this design. Hover your iPhone camera over the code. For Android and other devices, download a QR Code reader. **Questions? Email sitecompletionq&a@claytonhomes.com**



UTILITIES		LOCATION	
ID	UTILITY	LEFT	DOWN
E	Elec Entrance	47 FT 6 IN	12 FT 5 IN
W	Water Inlet	41 FT 10 IN	0 FT 0 IN



03/20/2023
9:20AM
DRAIN LINES



ZERH-28.VIS28483A.Z3

WATER LINES

LOOSE PLUMBING FOR FIELD INSTALL	SIZE ITEM	3'	3'	3'	3'	3'	3-1.5	3x3x2	3'	3-2	2'	2'	2'	2'	2-1.5	1 1/2	1 1/2	1 1/2	1 1/2	CLEAN	CO.	
		QTY.	LTTY	XLTL	COUP	DBL.EL.	ST	REDUC	LTTY	PIPE	REDUC	LTTY	XLTL	COUP	PIPE	ST	REDUC	LTTY	XLTL	COUP	PIPE	DUT
$\text{---} \text{---} \text{---} = 1 \frac{1}{2}" \phi$ $\text{---} \text{---} \text{---} = 2" \phi$ $\text{---} \text{---} \text{---} = 3" \phi$								2	20'			1	1	30	1	1	2	40'				
$\text{---} \text{---} \text{---} = 1 \frac{1}{2}" \phi$ $\text{---} \text{---} \text{---} = 2" \phi$ $\text{---} \text{---} \text{---} = 3" \phi$																						
$\text{---} \text{---} \text{---} = 1 \frac{1}{2}" \phi$ $\text{---} \text{---} \text{---} = 3/4" \phi$ $\text{---} \text{---} \text{---} = \text{COLD ONLY}$																						

DRAIN, & WATER PIPING
TYP. NOTE: DWGS. NOT TO SCALE
TYP. NOTE FOR WATER LINES:
STOOL TRAP ARM LESS THAN 6'-0"
DASHED LINES ARE FIELD INSTALLED
TYP. NOTE FOR WATER LINES:
COLD AS SHOWN,
FOR HOT LINES DELETE
STOOL INLET & SHUTOFF

TYP. NOTES: REFER TO PLN-11 FOR GEN. NOTES
SEE DAPIA FOR ANY DETAILS NOT SHOWN
ON DRAWINGS.
28.375' MDL 3/4
18.875' MDL 1/2
0.69 VOL (GAL)

D:\ACADDBL-ZERD\VIS28483A.dwg

SOUTHERN HOMES
MODEL VIS28483A-48-3/28X48