

ClaytonGO: Foundation Plan Summary

Order Number: **N/A**
 Model Number: **941-VIS28483A-28X56-PORCH**
 Home Building Facility: **941**

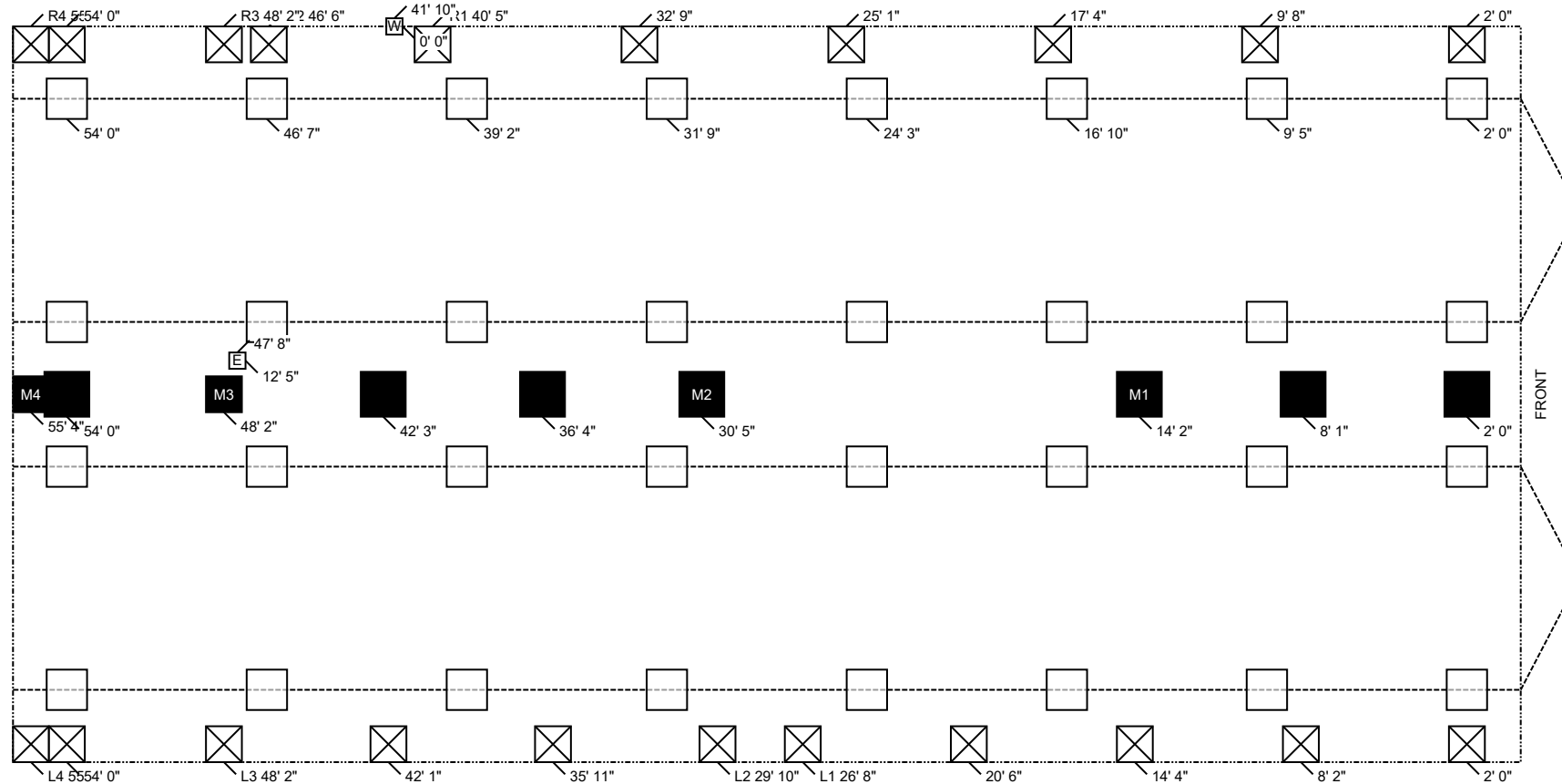
Home Width: **27 FT 4 IN**
 Home Length: **56 FT 0 IN**
 Outrigger Length (O.R.): **32.25 IN**
 Chassis Spacing: **99.5 IN**

Roof Load: **20 PSF**
 Soil Bearing Cap: **1500 PSF**
 Min. I-Beam Size: **8 IN**
 Calculated Eave/Overhang: **12 IN**

Use this QR Code to access DAPIA approved tables referenced within this design. Hover your iPhone camera over the code. For Android and other devices, download a QR Code reader. **Questions? Email sitecompletionq&a@claytonhomes.com**



<p>TABLE 1: FRAME PIERS</p> <p>Pier Spacing TYP. 7 FT 5 IN MAX. 8 FT 0 IN (Table 7b)</p> <p>Pier Configuration Single stacked Single stacked</p> <p>Footer Size 18 IN x 18 IN x 6 IN 18 IN x 18 IN x 6 IN</p>	<p>TABLE 2: EXTERIOR PIERS</p> <p>Pier ID L1, L2, L3, L4 R1, R2, R3, R4 (Table 7b)</p> <p>Pier Configuration Single stacked Single stacked</p> <p>Footer Size 16 IN x 16 IN x 6 IN 16 IN x 16 IN x 6 IN</p>	<p>TABLE 3: MARRIAGE WALL PIERS</p> <p>Pier ID M1, M2, P@8'oc M3, M4 (Table 5b)</p> <p>Pier Configuration Single stacked Single stacked</p> <p>Footer Size 20 IN x 20 IN x 6 IN 16 IN x 16 IN x 6 IN</p>
---	---	--



NOTES:

1. FROST PROTECTION WILL BE PROVIDED BY PLACING FOOTERS BELOW FROST DEPTH OF 36 INCHES PER (FIGURE 5A) OR FROM LAHJ. Frost depth for interior footers may be taken as half with R5 skirting per (Table 4a) [3285.312(b)]
2. PLACE SUPPORTS AT ALL EXTERIOR OPENINGS & PERIMETER BLOCK ALONG EXTERIOR SIDEWALLS (P), AT 96 INCH ON CENTER. & ALONG MARRIAGE WALL(S) AT 96 INCHES ON CENTER.
3. ALL FOOTERS WILL BE POURED CONCRETE. ALL SINGLE STACKED PIERS WILL HAVE A MINIMUM FOOTER THICKNESS OF 6 INCHES with footer depth extending below frost depth using 3,000 PSI minimum concrete (table 10A) (table 8)
4. THIS PIER LAYOUT HAS BEEN DERIVED USING PE SEALED & DAPIA APPROVED INSTALLATION MANUAL AS OUTLINED ABOVE. PLEASE SEE INSTALLATION MANUAL FOR PE SEAL AND DAPIA APPROVAL. (Reference to Clayton Homes DAPIA approved Installation manual) [Reference to Federal Statutes 24 CFR Part 3280, 3285 or 3286]



ClaytonGO: Foundation Plan Summary

Order Number:	N/A	Home Width:	27 FT 4 IN	Roof Load:	20 PSF
Model Number:	941-VIS28483A-28X56-PORCH	Home Length:	56 FT 0 IN	Soil Bearing Cap:	1500 PSF
Home Building Facility:	941	Outrigger Length (O.R.):	32.25 IN	Min. I-Beam Size:	8 IN
		Chassis Spacing:	99.5 IN	Calculated Eave/Overhang:	12 IN

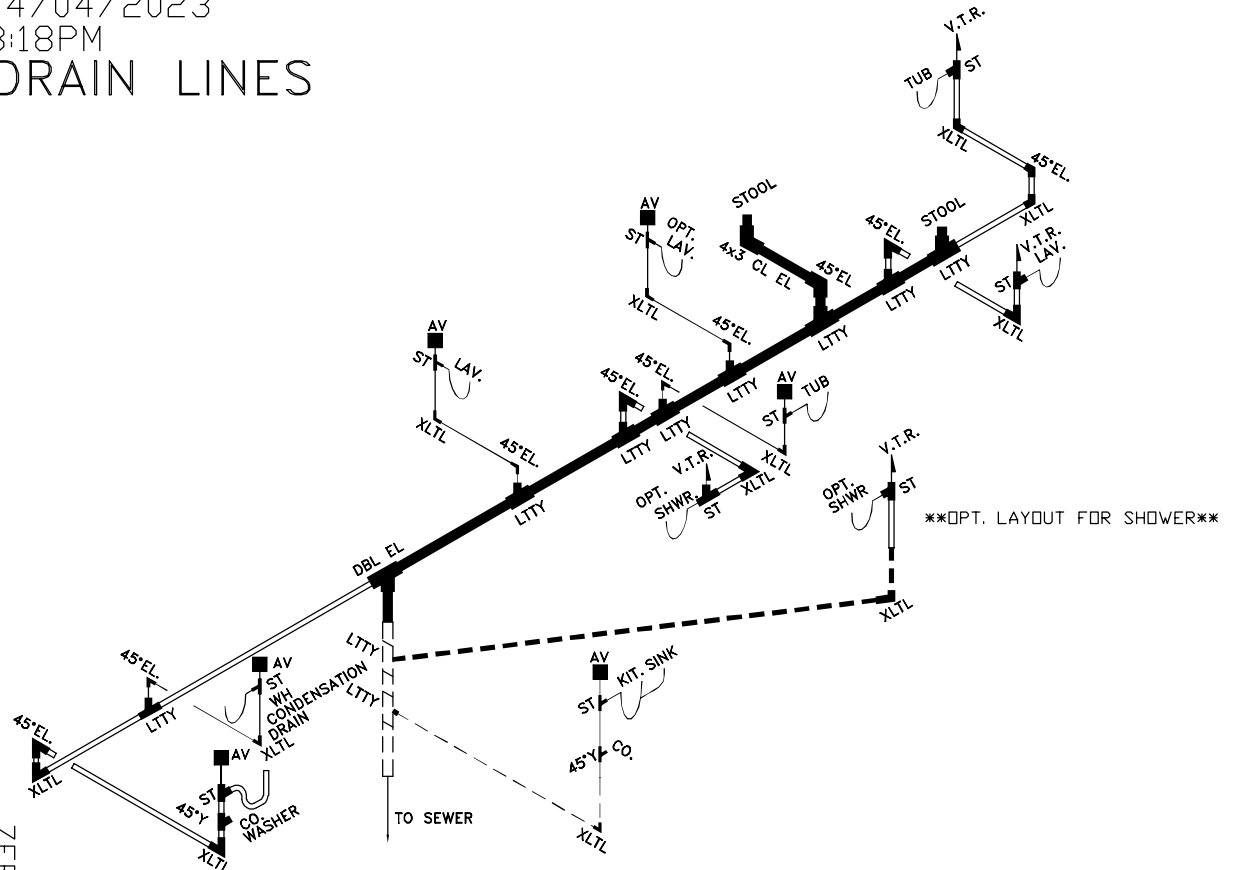
Use this QR Code to access DAPIA approved tables referenced within this design. Hover your iPhone camera over the code. For Android and other devices, download a QR Code reader. **Questions? Email sitecompletionq&a@claytonhomes.com**



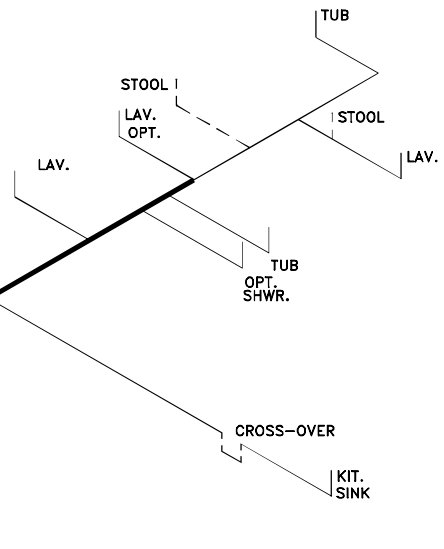
UTILITIES		LOCATION	
ID	UTILITY	LEFT	DOWN
E	Elec Entrance	47 FT 8 IN	12 FT 5 IN
W	Water Inlet	41 FT 10 IN	0 FT 0 IN



04/04/2023
3:18PM
DRAIN LINES



OPT. LAYOUT FOR SHOWER



WATER LINES

ZERH-28.VIS28483A.Z3

LOOSE PLUMBING FOR FIELD INSTALL	SIZE	3'	3'	3'	3'	3'	3-1.5	3x3x2	3'	3-2	2'	2'	2'	2'	2-1.5	1 1/2	1 1/2	1 1/2	1 1/2	CLEAN	CD.
ITEM	LTTY	XLTL	COUP	DBL.EL	ST	REDUC	LTTY	PIPE	REDUC	LTTY	XLTL	COUP	PIPE	ST	REDUC	LTTY	XLTL	COUP	PIPE	OUT	PLUG
							2	20'			1	1	30		1		1	2	40'		
= 1 1/2"		= 2"		= 3"		FOR DRAIN LINES		DRAIN, & WATER PIPING TYP. NOTE: DWGS. NOT TO SCALE TYP. NOTE FOR DRAIN LINES: STOOL TRAP ARM LESS THAN 6'-0" DASHED LINES ARE FIELD INSTALLED													
= 1 1/2"		= 2"		= 3"		FOR ON-SITE DRAIN LINES		TYP. NOTE FOR WATER LINES: COLD AS SHOWN, FOR HOT LINES DELETE STOOL INLET & SHUTOFF													
= 1 1/2"		= 3/4"		= COLD ONLY		FOR WATER LINES		TYP. NOTES: REFER TO PLN-11 FOR GEN. NOTES SEE DAPIA FOR ANY DETAILS NOT SHOWN ON DRAWINGS.													

C:\ACADDBL-ZERH\VIS28483A-28X56-PORCH.dwg

28,375' MDL 3/4
18,875' MDL 1/2
0.69 VOL (GAL)

SOUTHERN HOMES
MODEL VIS28483A-56-3/28X56
** PORCH VERSION / ZERH **