

ClaytonGO: Foundation Plan Summary

Order Number: **N/A**
 Model Number: **941-VIS28483A-28X56-PORCH**
 Home Building Facility: **941**

Home Width: **27 FT 4 IN**
 Home Length: **56 FT 0 IN**
 Outrigger Length (O.R.): **32.25 IN**
 Chassis Spacing: **99.5 IN**

Roof Load: **20 PSF**
 Soil Bearing Cap: **1500 PSF**
 Min. I-Beam Size: **8 IN**
 Calculated Eave/Overhang: **12 IN**

Use this QR Code to access DAPIA approved tables referenced within this design. Hover your iPhone camera over the code. For Android and other devices, download a QR Code reader. **Questions? Email sitecompletionq&a@claytonhomes.com**



TABLE 1: FRAME PIERS

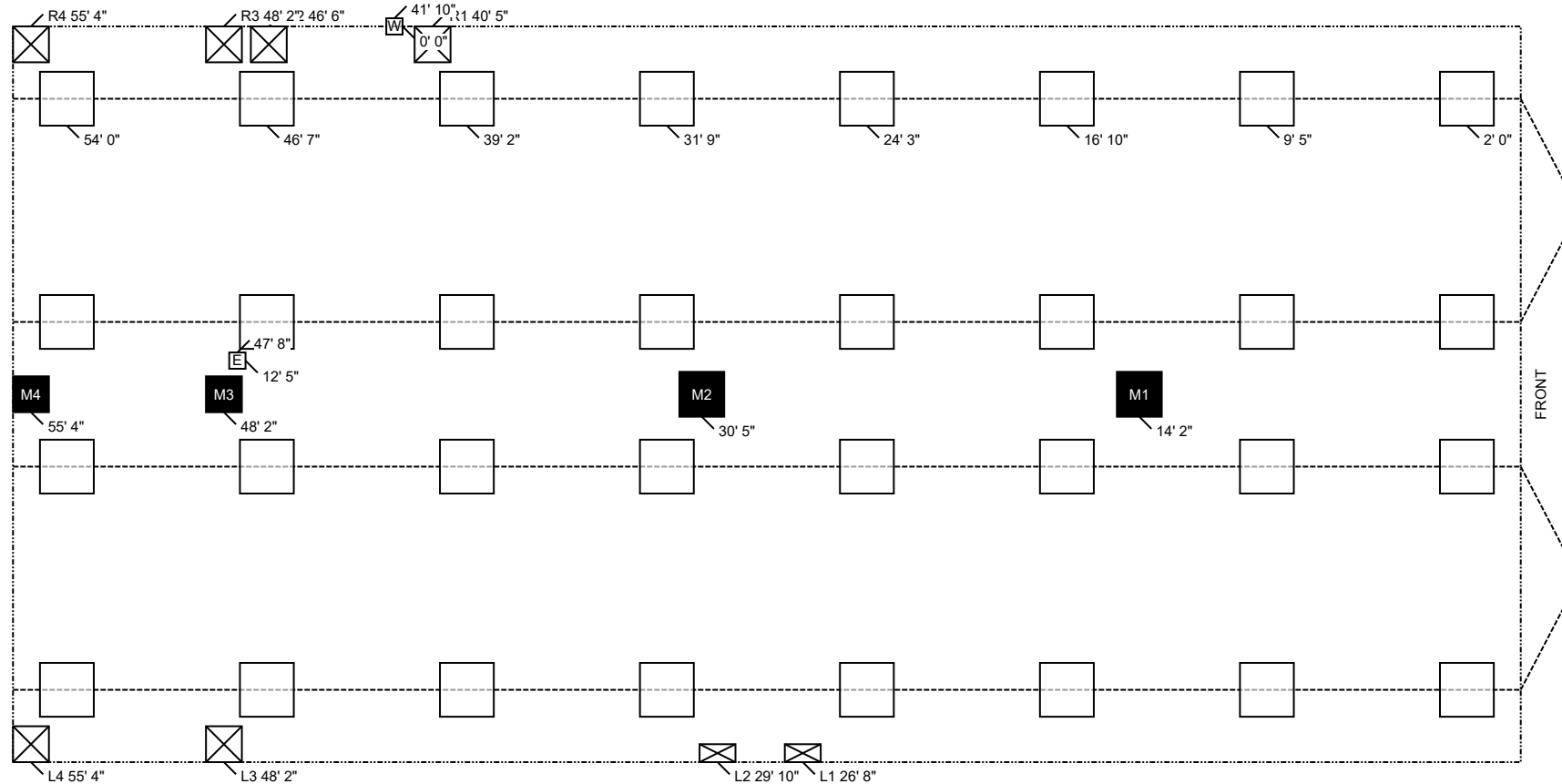
Pier Spacing	Pier Configuration	Footer Size
TYP. 7 FT 5 IN	Single stacked	24 IN x 24 IN x 8 IN
MAX. 8 FT 0 IN (Table 6b)	Single stacked	24 IN x 24 IN x 8 IN

TABLE 2: EXTERIOR PIERS

Pier ID	Pier Configuration	Footer Size
L1, L2	Single stacked	8 IN x 16 IN x 6 IN
L3, L4	Single stacked	16 IN x 16 IN x 6 IN
R1, R2, R3, R4	Single stacked	16 IN x 16 IN x 6 IN

TABLE 3: MARRIAGE WALL PIERS

Pier ID	Pier Configuration	Footer Size
M1, M2	Single stacked	20 IN x 20 IN x 6 IN
M3, M4	Single stacked	16 IN x 16 IN x 6 IN



NOTES:

- FROST PROTECTION WILL BE PROVIDED BY PLACING FOOTERS BELOW FROST DEPTH OF 36 INCHES PER (FIGURE 5A) OR FROM LAHJ. Frost depth for interior footers may be taken as half with R5 skirting per (Table 4a) [3285.312(b)]
- SIDEWALL PIERS SHALL BE PLACED AT EXTERIOR DOORS AND WINDOW OPENINGS GREATER THAN 48" PER TABLE 2.
- ALL FOOTERS WILL BE POURED CONCRETE. ALL SINGLE STACKED PIERS WILL HAVE A MINIMUM FOOTER THICKNESS OF 8 INCHES with footer depth extending below frost depth using 3,000 PSI minimum concrete (table 10A) (table 8)
- THIS PIER LAYOUT HAS BEEN DERIVED USING PE SEALED & DAPIA APPROVED INSTALLATION MANUAL AS OUTLINED ABOVE. PLEASE SEE INSTALLATION MANUAL FOR PE SEAL AND DAPIA APPROVAL. (Reference to Clayton Homes DAPIA approved Installation manual) [Reference to Federal Statutes 24 CFR Part 3280, 3285 or 3286]



ClaytonGO: Foundation Plan Summary

Order Number:	N/A	Home Width:	27 FT 4 IN	Roof Load:	20 PSF
Model Number:	941-VIS28483A-28X56-PORCH	Home Length:	56 FT 0 IN	Soil Bearing Cap:	1500 PSF
Home Building Facility:	941	Outrigger Length (O.R.):	32.25 IN	Min. I-Beam Size:	8 IN
		Chassis Spacing:	99.5 IN	Calculated Eave/Overhang:	12 IN

Use this QR Code to access DAPIA approved tables referenced within this design. Hover your iPhone camera over the code. For Android and other devices, download a QR Code reader. **Questions? Email sitecompletionq&a@claytonhomes.com**



UTILITIES		LOCATION	
ID	UTILITY	LEFT	DOWN
E	Elec Entrance	47 FT 8 IN	12 FT 5 IN
W	Water Inlet	41 FT 10 IN	0 FT 0 IN

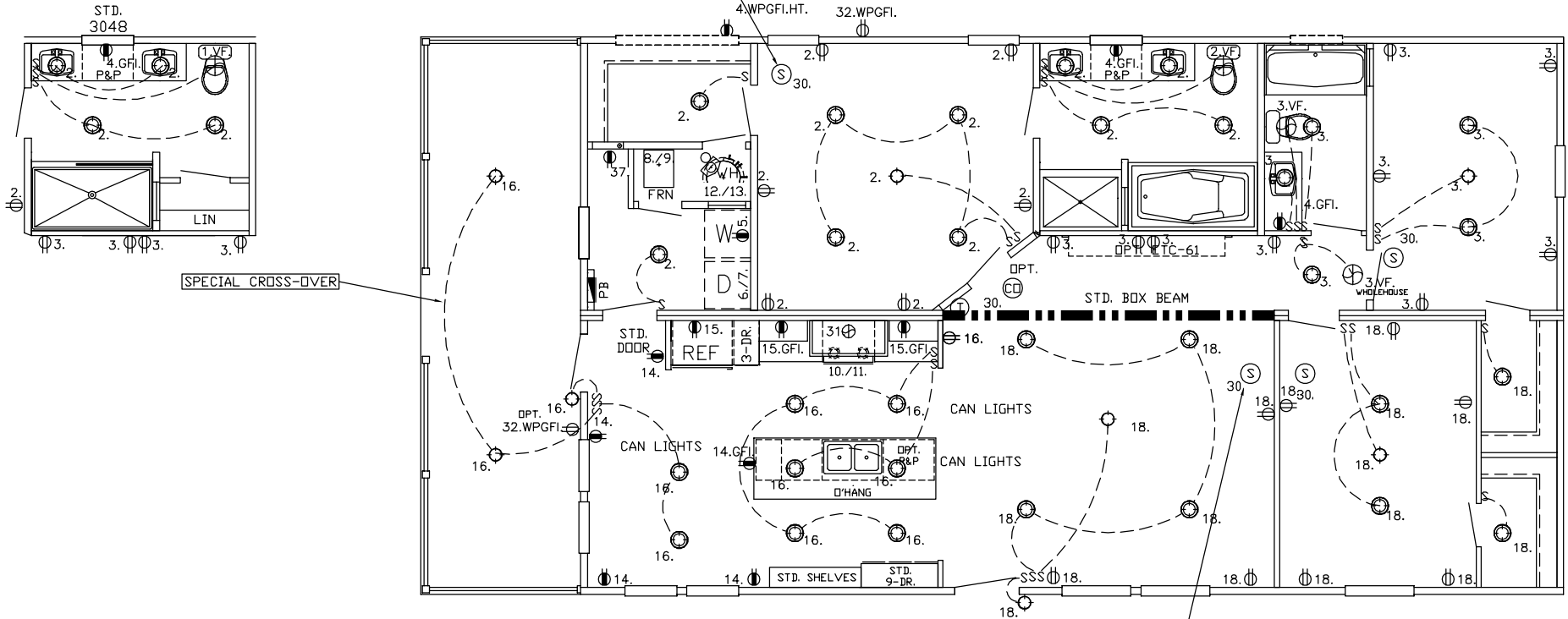


04/04/2023
3:18PM

REQUIRED TO BE SMOKE/CARBON MONOXIDE ALARM COMBO UNIT
WHEN A GAS WATER HEATER IS OPTIONED IN

CARBON MONOXIDE (CO) ALARMS ARE ONLY REQUIRED WHEN ONE OR MORE OF THE FOLLOWING ARE
PROVIDED BY THE HOME BUILDING FACILITY (HBF):

1. THE HOME IS EQUIPPED WITH A FUEL BURNING APPLIANCE INSTALLED AT THE HBF.
2. THE HOME HAS BEEN DESIGNED FROM THE HBF FOR AN ATTACHED GARAGE ADDITION.
3. THE HOME HAS BEEN DESIGNED FROM THE HBF WITH A BASEMENT ACCESS THROUGH THE FLOOR.



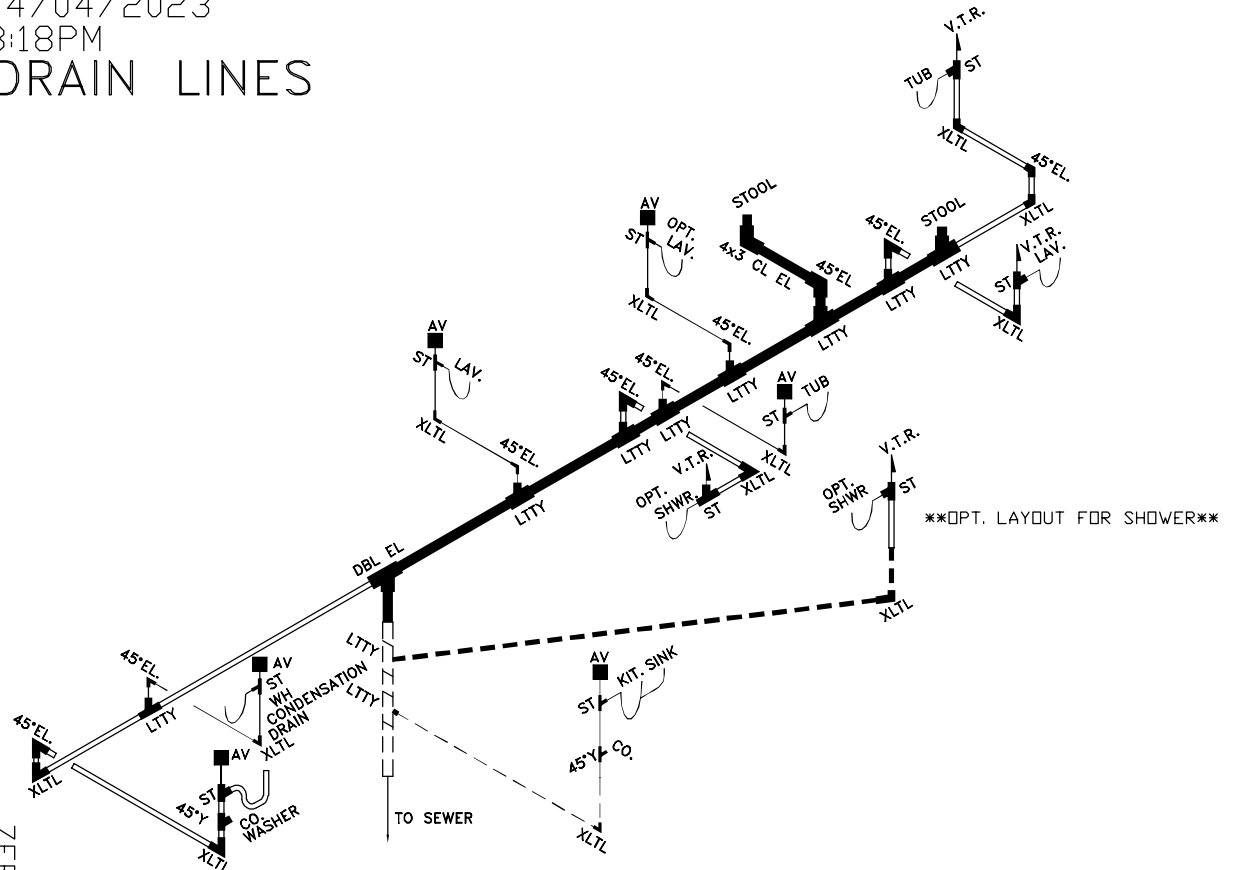
REF. EL-24 FOR NOTES & CIRCUITS
REF. PLN-11 FOR GENERAL NOTES
● = RECEPT. = 20AMP CIRCUIT = 12-2 WIRE (CIRCUITS BELOW)
CIRCUIT 37.

C:\ACADDBL-ZERH\VIS28483A-28X56-PORCH.dwg

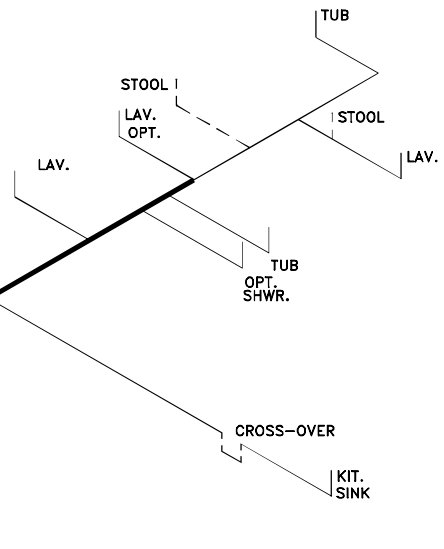
SOUTHERN HOMES
MODEL VIS28483A-56-3/28X56
** PORCH VERSION / ZERH **

ZERH-28.VIS28483A.Z2.2

04/04/2023
3:18PM
DRAIN LINES



OPT. LAYOUT FOR SHOWER



WATER LINES

ZERH-28.VIS28483A.Z3

LOOSE PLUMBING FOR FIELD INSTALL	SIZE	3'	3'	3'	3'	3'	3-1.5	3x3x2	3'	3-2	2'	2'	2'	2'	2-1.5	1 1/2	1 1/2	1 1/2	1 1/2	CLEAN	CD.
ITEM	LTTY	XLTL	COUP	DBL.EL	ST	REDUC	LTTY	PIPE	REDUC	LTTY	XLTL	COUP	PIPE	ST	REDUC	LTTY	XLTL	COUP	PIPE	OUT	PLUG
							2	20'			1	1	30		1		1	2	40'		
= 1 1/2"		= 2"		= 3"		FOR DRAIN LINES		DRAIN, & WATER PIPING TYP. NOTE: DWGS. NOT TO SCALE TYP. NOTE FOR DRAIN LINES: STOOL TRAP ARM LESS THAN 6'-0" DASHED LINES ARE FIELD INSTALLED													
= 1 1/2"		= 2"		= 3"		FOR ON-SITE DRAIN LINES		TYP. NOTE FOR WATER LINES: COLD AS SHOWN, FOR HOT LINES DELETE STOOL INLET & SHUTOFF													
= 1 1/2"		= 3/4"		= COLD ONLY		FOR WATER LINES		TYP. NOTES: REFER TO PLN-11 FOR GEN. NOTES SEE DAPIA FOR ANY DETAILS NOT SHOWN ON DRAWINGS.													

C:\ACADDBL-ZERH\VIS28483A-28X56-PORCH.dwg

28,375' MDL 3/4
18,875' MDL 1/2
0.69 VOL (GAL)

SOUTHERN HOMES
MODEL VIS28483A-56-3/28X56
** PORCH VERSION / ZERH **