

ClaytonGO: Foundation Plan Summary

Order Number: **N/A**
 Model Number: **941-VIS28483A**
 Home Building Facility: **941**

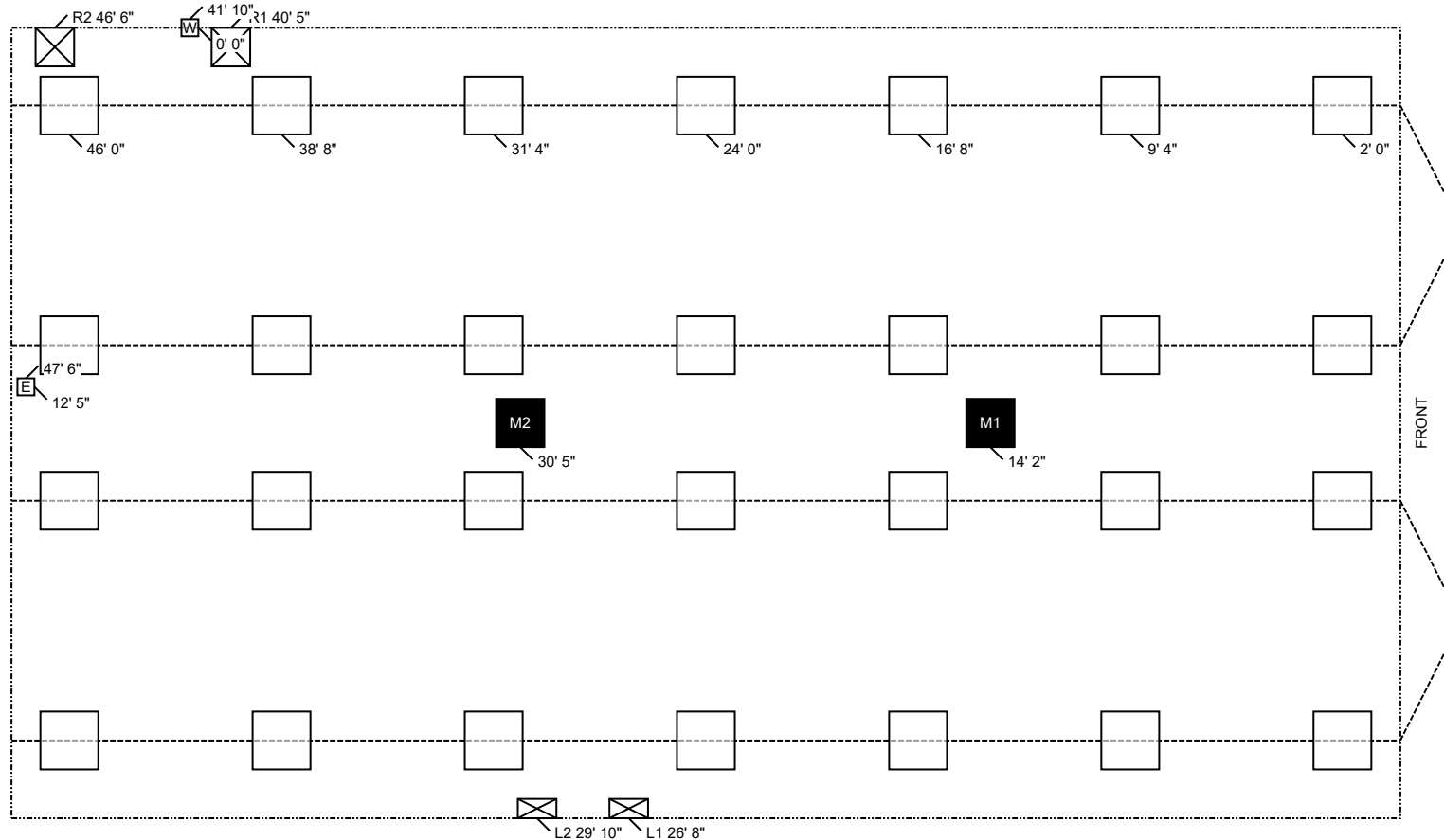
Home Width: **27 FT 4 IN**
 Home Length: **48 FT 0 IN**
 Outrigger Length (O.R.): **32.25 IN**
 Chassis Spacing: **99.5 IN**

Roof Load: **20 PSF**
 Soil Bearing Cap: **1500 PSF**
 Min. I-Beam Size: **8 IN**
 Calculated Eave/Overhang: **12 IN**

Use this QR Code to access DAPIA approved tables referenced within this design. Hover your iPhone camera over the code. For Android and other devices, download a QR Code reader.
Questions? Email sitecompletionq&a@claytonhomes.com



<p>TABLE 1: FRAME PIERS</p> <table border="0"> <tr> <th>Pier Spacing</th> <th>Pier Configuration</th> </tr> <tr> <td>TYP. 7 FT 4 IN</td> <td>Single stacked</td> </tr> <tr> <td>MAX. 8 FT 0 IN</td> <td>Single stacked</td> </tr> </table> <p>(Table 6b)</p>	Pier Spacing	Pier Configuration	TYP. 7 FT 4 IN	Single stacked	MAX. 8 FT 0 IN	Single stacked	<p>TABLE 2: EXTERIOR PIERS</p> <table border="0"> <tr> <th>Pier ID</th> <th>Pier Configuration</th> <th>Footer Size</th> </tr> <tr> <td>L1, L2</td> <td>Single stacked</td> <td>8 IN x 16 IN x 6 IN</td> </tr> <tr> <td>R1, R2</td> <td>Single stacked</td> <td>16 IN x 16 IN x 6 IN</td> </tr> </table> <p>(Table 6d)</p>	Pier ID	Pier Configuration	Footer Size	L1, L2	Single stacked	8 IN x 16 IN x 6 IN	R1, R2	Single stacked	16 IN x 16 IN x 6 IN	<p>TABLE 3: MARRIAGE WALL PIERS</p> <table border="0"> <tr> <th>Pier ID</th> <th>Pier Configuration</th> <th>Footer Size</th> </tr> <tr> <td>M1, M2</td> <td>Single stacked</td> <td>20 IN x 20 IN x 6 IN</td> </tr> </table> <p>(Table 5b)</p>	Pier ID	Pier Configuration	Footer Size	M1, M2	Single stacked	20 IN x 20 IN x 6 IN
Pier Spacing	Pier Configuration																						
TYP. 7 FT 4 IN	Single stacked																						
MAX. 8 FT 0 IN	Single stacked																						
Pier ID	Pier Configuration	Footer Size																					
L1, L2	Single stacked	8 IN x 16 IN x 6 IN																					
R1, R2	Single stacked	16 IN x 16 IN x 6 IN																					
Pier ID	Pier Configuration	Footer Size																					
M1, M2	Single stacked	20 IN x 20 IN x 6 IN																					



NOTES:

- FROST PROTECTION WILL BE PROVIDED BY PLACING FOOTERS BELOW FROST DEPTH OF 36 INCHES PER (FIGURE 5A) OR FROM LAHJ. Frost depth for interior footers may be taken as half with R5 skirting per (Table 4a) [3285.312(b)]
- SIDEWALL PIERS SHALL BE PLACED AT EXTERIOR DOORS AND WINDOW OPENINGS GREATER THAN 48" PER TABLE 2.
- ALL FOOTERS WILL BE POURED CONCRETE. ALL SINGLE STACKED PIERS WILL HAVE A MINIMUM FOOTER THICKNESS OF 8 INCHES with footer depth extending below frost depth using 3,000 PSI minimum concrete (table 10A) (table 8)
- THIS PIER LAYOUT HAS BEEN DERIVED USING PE SEALED & DAPIA APPROVED INSTALLATION MANUAL AS OUTLINED ABOVE. PLEASE SEE INSTALLATION MANUAL FOR PE SEAL AND DAPIA APPROVAL. (Reference to Clayton Homes DAPIA approved Installation manual) [Reference to Federal Statutes 24 CFR Part 3280, 3285 or 3286]



ClaytonGO: Foundation Plan Summary

Order Number: **N/A**
Model Number: **941-VIS28483A**
Home Building Facility: **941**

Home Width: **27 FT 4 IN**
Home Length: **48 FT 0 IN**
Outrigger Length (O.R.): **32.25 IN**
Chassis Spacing: **99.5 IN**

Roof Load: **20 PSF**
Soil Bearing Cap: **1500 PSF**
Min. I-Beam Size: **8 IN**
Calculated Eave/Overhang: **12 IN**

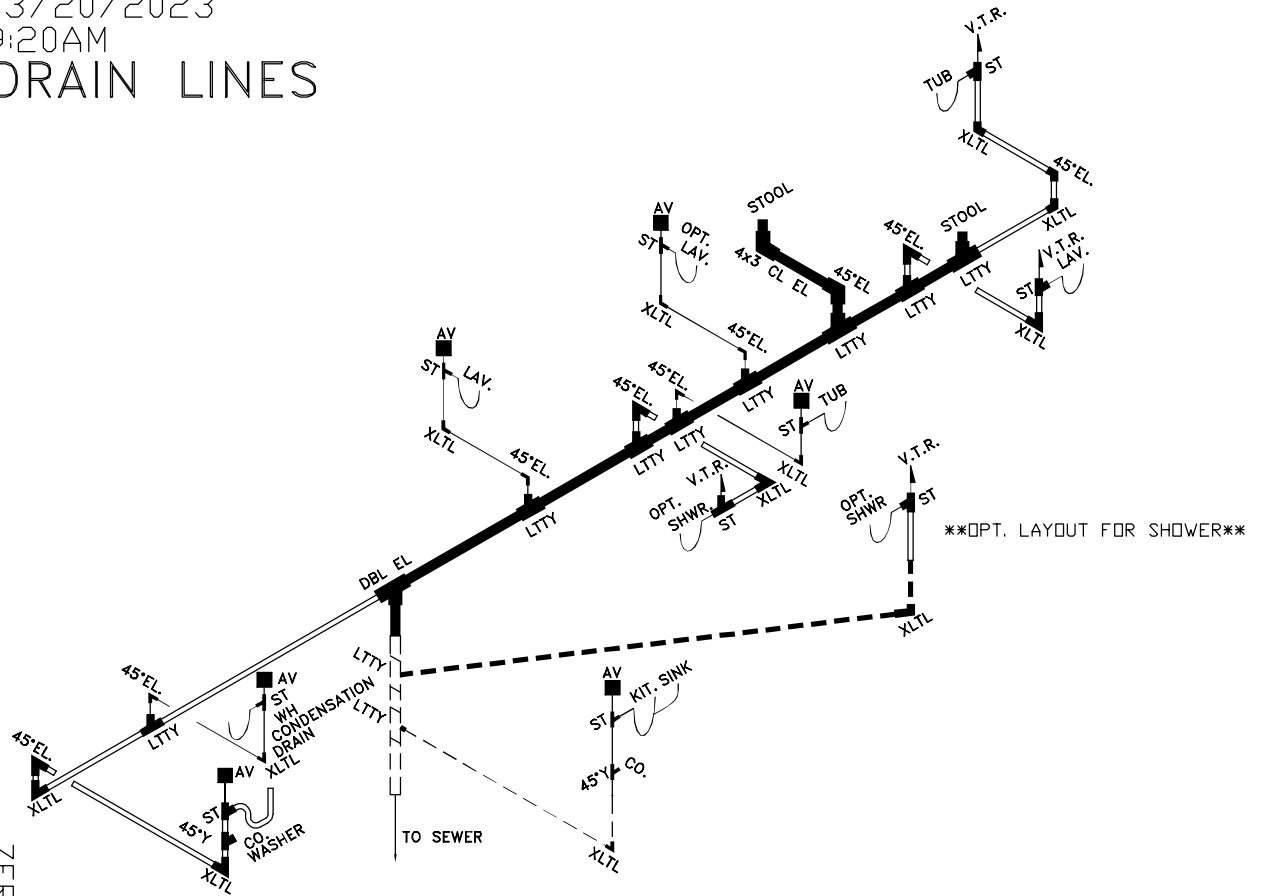
Use this QR Code to access DAPIA approved tables referenced within this design. Hover your iPhone camera over the code. For Android and other devices, download a QR Code reader. **Questions? Email sitecompletionq&a@claytonhomes.com**



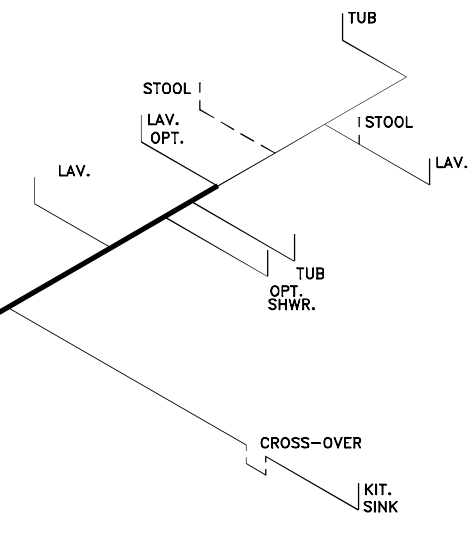
UTILITIES		LOCATION	
ID	UTILITY	LEFT	DOWN
E	Elec Entrance	47 FT 6 IN	12 FT 5 IN
W	Water Inlet	41 FT 10 IN	0 FT 0 IN



03/20/2023
9:20AM
DRAIN LINES



OPT. LAYOUT FOR SHOWER



ZERH-28.VIS28483A.Z3

WATER LINES

LOOSE PLUMBING FOR FIELD INSTALL	SIZE	3'	3'	3'	3'	3'	3-1.5	3x3x2	3'	3-2	2'	2'	2'	2'	2-1.5	1 1/2	1 1/2	1 1/2	1 1/2	CLEAN	CD.	
	ITEM	LTTY	XLTL	COUP	DBL.EL.	ST	REDUC	LTTY	PIPE	REDUC	LTTY	XLTL	COUP	PIPE	ST	REDUC	LTTY	XLTL	COUP	PIPE	OUT	PLUG
---	1 1/2"ø	---	2"ø	---	3"ø											1		1	2	40'		
---	1 1/2"ø	---	2"ø	---	3"ø																	
---	1 1/2"ø	---	3/4"ø	---																		

DRAIN, & WATER PIPING
TYP. NOTE: DWGS. NOT TO SCALE
TYP. NOTE FOR DRAIN LINES:
STOOL TRAP ARM LESS THAN 6'-0"
DASHED LINES ARE FIELD INSTALLED
TYP. NOTE FOR WATER LINES:
COLD AS SHOWN,
FOR HOT LINES DELETE
STOOL INLET & SHUTOFF

TYP. NOTES: REFER TO PLN-11 FOR GEN. NOTES
SEE DAPIA FOR ANY DETAILS NOT SHOWN
ON DRAWINGS.

28.375' MDL 3/4
18.875' MDL 1/2
0.69 VOL (GAL)

D:\ACADDBL-ZERO\VIS28483A.dwg

SOUTHERN HOMES
MODEL VIS28483A-48-3/28X48