

### ClaytonGO: Foundation Plan Summary

Order Number: **N/A**  
 Model Number: **941-VIS16763E**  
 Home Building Facility: **941**

Home Width: **15 FT 0 IN**  
 Home Length: **76 FT 0 IN**  
 Outrigger Length (O.R.): **40.25 IN**  
 Chassis Spacing: **99.5 IN**

Roof Load: **20 PSF**  
 Soil Bearing Cap: **1500 PSF**  
 Min. I-Beam Size: **8 IN**  
 Calculated Eave/Overhang: **6 IN**

Use this QR Code to access DAPIA approved tables referenced within this design. Hover your iPhone camera over the code. For Android and other devices, download a QR Code reader.  
**Questions? Email [sitecompletionq&a@claytonhomes.com](mailto:sitecompletionq&a@claytonhomes.com)**

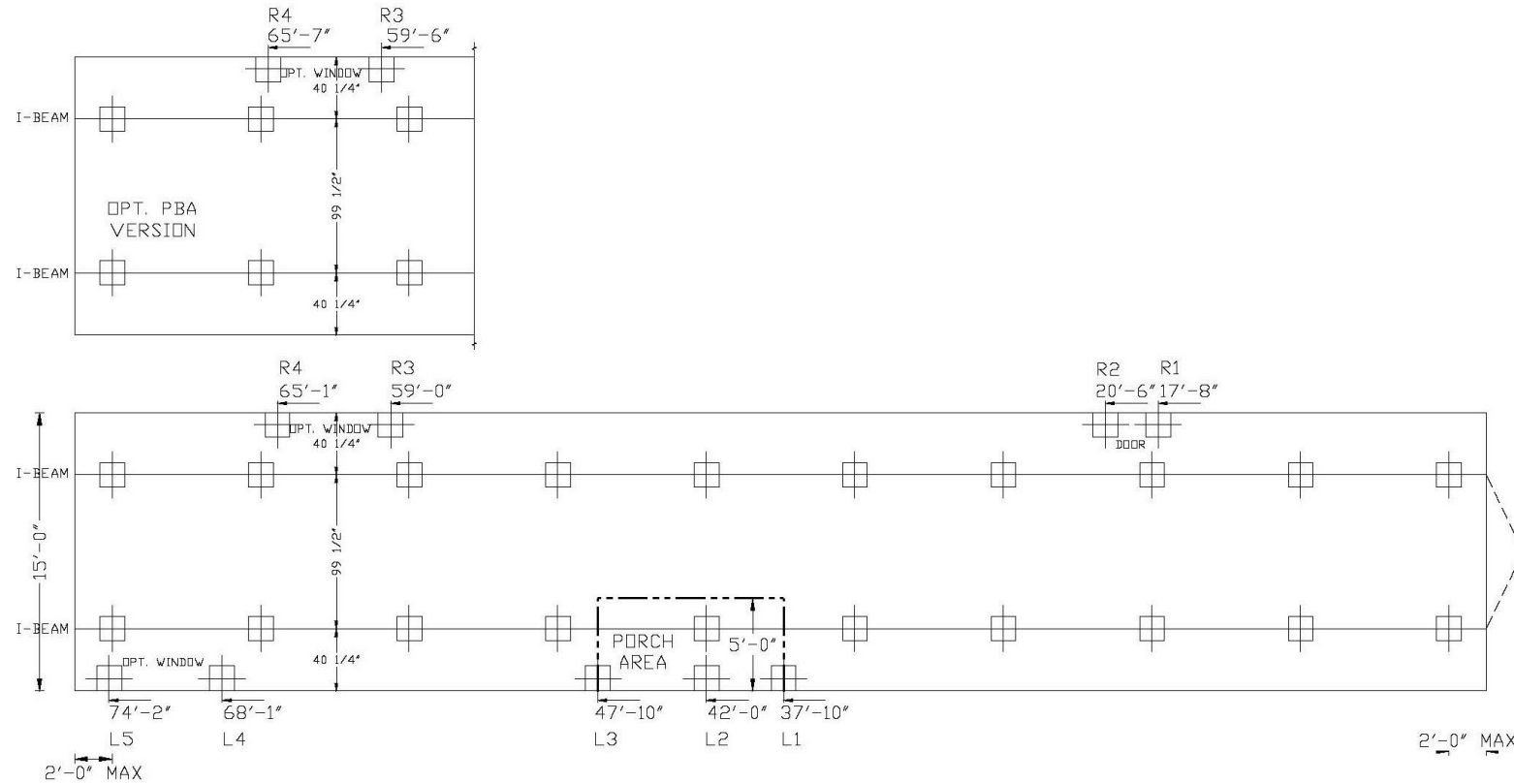


**TABLE 1: FRAME PIERS**

Pier Spacing	Pier Configuration	Footer Size
TYP. 8 FT 0 IN	Single stacked	24 IN x 24 IN x 8 IN
MAX. 8 FT 0 IN (Table 6a)	Single stacked	24 IN x 24 IN x 8 IN

**TABLE 2: EXTERIOR PIERS**

Pier ID	Pier Configuration	Footer Size
L1, L2, L3, L4, L5	Single stacked	16 IN x 16 IN x 6 IN
R1, R2	Single stacked	8 IN x 16 IN x 6 IN
R3, R4 (Table 6d)	Single stacked	16 IN x 16 IN x 6 IN



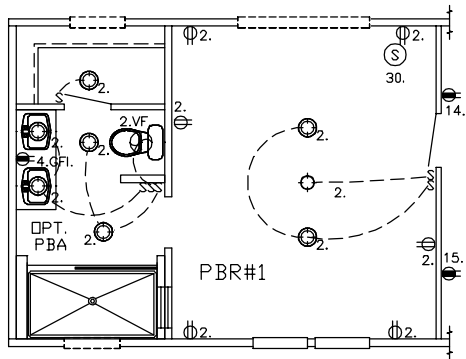
**NOTES:**

1. FROST PROTECTION WILL BE PROVIDED BY PLACING FOOTERS BELOW FROST DEPTH OF 36 INCHES PER (FIGURE 5A) OR FROM LAHJ. Frost depth for interior footers may be taken as half with R5 skirting per (Table 4a) [3285.312(b)]
2. SIDEWALL PIERS SHALL BE PLACED AT EXTERIOR DOORS AND WINDOW OPENINGS GREATER THAN 48" PER TABLE 2.
3. ALL FOOTERS WILL BE POURED CONCRETE. ALL SINGLE STACKED PIERS WILL HAVE A MINIMUM FOOTER THICKNESS OF 8 INCHES with footer depth extending below frost depth using 3,000 PSI minimum concrete (table 10A) (table 8)
4. THIS PIER LAYOUT HAS BEEN DERIVED USING PE SEALED & DAPIA APPROVED INSTALLATION MANUAL AS OUTLINED ABOVE. PLEASE SEE INSTALLATION MANUAL FOR PE SEAL AND DAPIA APPROVAL. (Reference to Clayton Homes DAPIA approved Installation manual) [Reference to Federal Statutes 24 CFR Part 3280, 3285 or 3286]



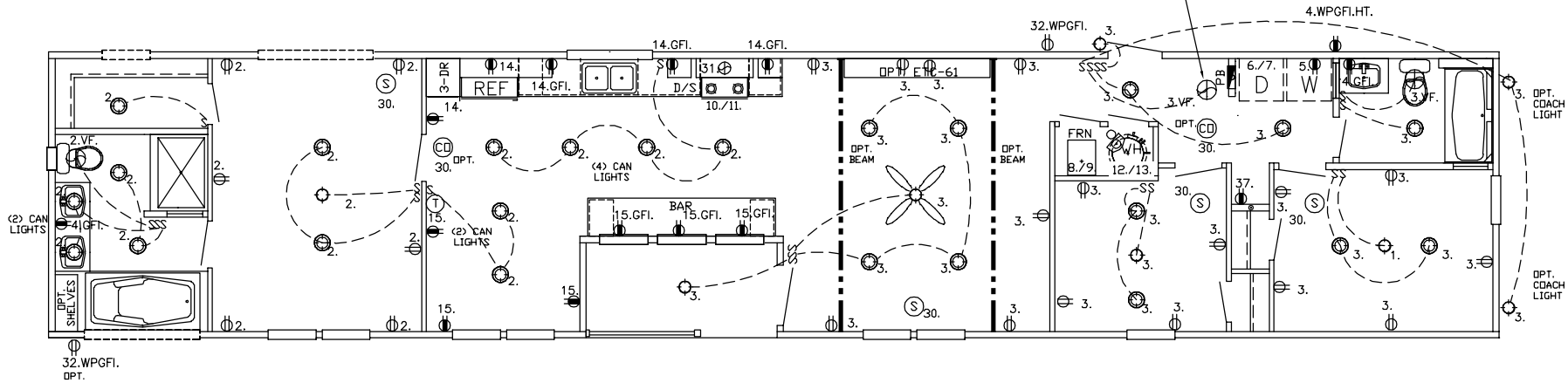
03/23/2023  
4:16PM

(SW1)



CARBON MONOXIDE (CO) ALARMS ARE ONLY REQUIRED WHEN ONE OR MORE OF THE FOLLOWING ARE PROVIDED BY THE HOME BUILDING FACILITY (HBF):

1. THE HOME IS EQUIPPED WITH A FUEL BURNING APPLIANCE INSTALLED AT THE HBF.
2. THE HOME HAS BEEN DESIGNED FROM THE HBF FOR AN ATTACHED GARAGE ADDITION.
3. THE HOME HAS BEEN DESIGNED FROM THE HBF WITH A BASEMENT ACCESS THROUGH THE FLOOR.



MP-16.VIS16763E.2

REF. EL-24 FOR NOTES & CIRCUITS  
REF. PLN-11 FOR GENERAL NOTES  
● = RECEP. = 20AMP CIRCUIT = 12-2 WIRE

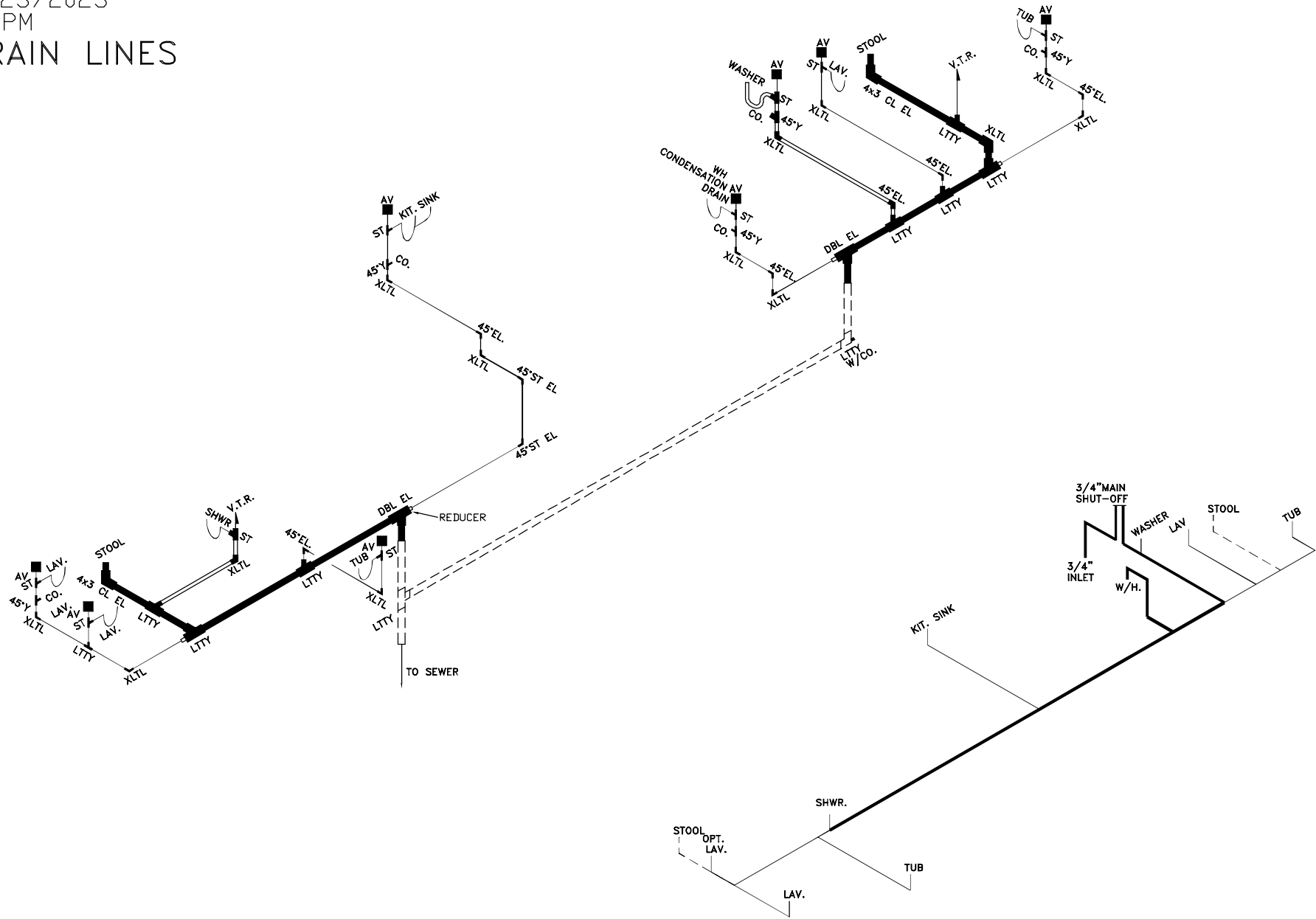
C:\ACADSG\ZERO\VIS16763E.dwg

**SOUTHERN HOMES**  
MODEL VIS16763E-76-3/16X76

03/23/2023

4:16PM

# DRAIN LINES



MP-16.VIS16763E.3

# WATER LINES

C:\ACADSG\ZERO\VIS16763E.dwg

LOOSE PLUMBING FOR FIELD INSTALL	SIZE	3'	3'	3'	3'	3'	3-1.5	3x3x2	3'	3-2	2'	2'	2'	2'	2'	2-1.5	1 1/2	1 1/2	1 1/2	1 1/2	CLEAN	CD.
ITEM	LTTY	XLTL	COUP	DBL.EL	ST	REDUC	LTTY	PIPE	REDUC	LTTY	XLTL	COUP	PIPE	ST	REDUC	LTTY	XLTL	COUP	PIPE	OUT	PLUG	
	2		2				1			70'											1	1

$\text{---} \text{---} \text{---} = 1 \frac{1}{2}" \#$	$\text{---} \text{---} \text{---} = 2" \#$	$\text{---} \text{---} \text{---} = 3" \#$	FOR DRAIN LINES
$\text{---} \text{---} \text{---} = 1 \frac{1}{2}" \#$	$\text{---} \text{---} \text{---} = 2" \#$	$\text{---} \text{---} \text{---} = 3" \#$	FOR ON-SITE DRAIN LINES
$\text{---} \text{---} \text{---} = 1/2" \#$	$\text{---} \text{---} \text{---} = 3/4" \#$	$\text{---} \text{---} \text{---} = \text{COLD ONLY}$	FOR WATER LINES

**DRAIN. & WATER PIPING**  
 TYP. NOTE: DWGS. NOT TO SCALE  
 TYP. NOTE FOR DRAIN LINES:  
 STOOL TRAP ARM LESS THAN 6'-0"  
 DASHED LINES ARE FIELD INSTALLED

**TYP. NOTE FOR WATER LINES:**  
 COLD AS SHOWN.  
 FOR HOT LINES DELETE  
 STOOL INLET & SHUTOFF

**TYP. NOTES: REFER TO PLN-11 FOR GEN. NOTES**  
 SEE DAPIA FOR ANY DETAILS NOT SHOWN  
 ON DRAWINGS.

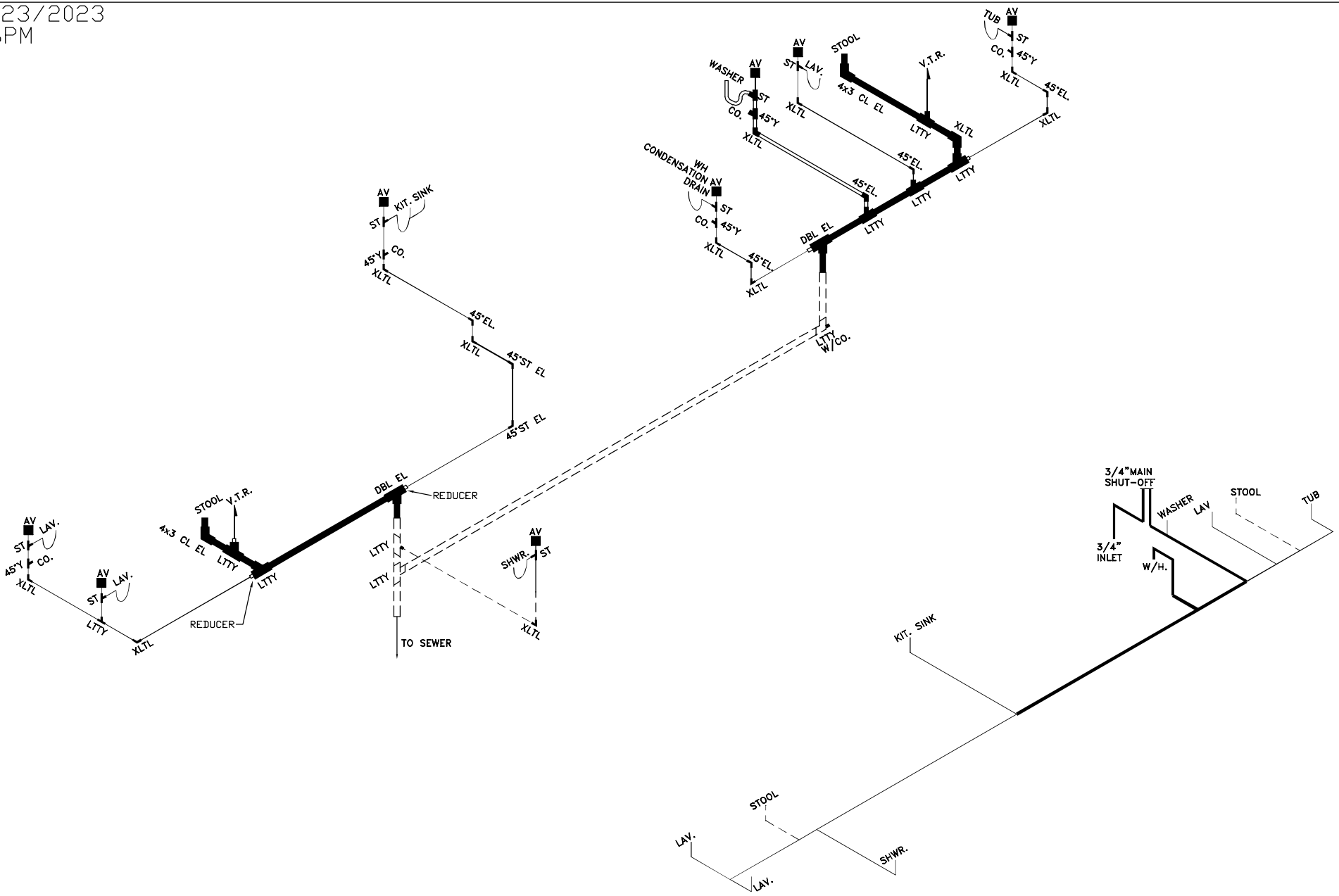
**STD. BATH**

7.08' MDL 3/4  
 72.29' MDL 1/2  
 0.80 VOL (GAL)

**SOUTHERN HOMES**  
 MODEL VIS16763E-76-3/16X76

03/23/2023  
4:16PM

MP-16.VIS16763E.3.1



WATER LINES  
SOUTHERN HOMES  
MODEL VIS16763E-76-3/16X76  
C:\ACADSG\ZERO\VIS16763E.dwg

LOOSE PLUMBING FOR FIELD INSTALL	SIZE	3'	3'	3'	3'	3'	3-1.5	3x3x2	3'	3-2	2'	2'	2'	2'	2'	2-1.5	1 1/2	1 1/2	1 1/2	1 1/2	CLEAN	CD.
	ITEM	LTTY	XLTL	COUP	DBL.EL.	ST	REDUC	LTTY	PIPE	REDUC	LTTY	XLTL	COUP	PIPE	ST	REDUC	LTTY	XLTL	COUP	PIPE	OUT	PLUG
		2		2			1		70'												1	1

|---| = 1 1/2" #    |---| = 2" #    |---| = 3" #  
 FOR DRAIN LINES    DRAIN, & WATER PIPING  
 TYP. NOTE: DWGS. NOT TO SCALE  
 FOR ON-SITE DRAIN LINES    TYP. NOTE FOR DRAIN LINES:  
 STOOL TRAP ARM LESS THAN 6'-0"  
 DASHED LINES ARE FIELD INSTALLED  
 FOR WATER LINES    TYP. NOTE FOR WATER LINES:  
 COLD AS SHOWN,  
 FOR HOT LINES DELETE  
 STOOL INLET & SHUTOFF

TYP. NOTES: REFER TO PLN-11 FOR GEN. NOTES  
 SEE DAPIA FOR ANY DETAILS NOT SHOWN  
 ON DRAWINGS.  
 OPT. BATH  
 7.08' MDL 3/4  
 72.29' MDL 1/2  
 0.80 VOL (GAL)