

savannah

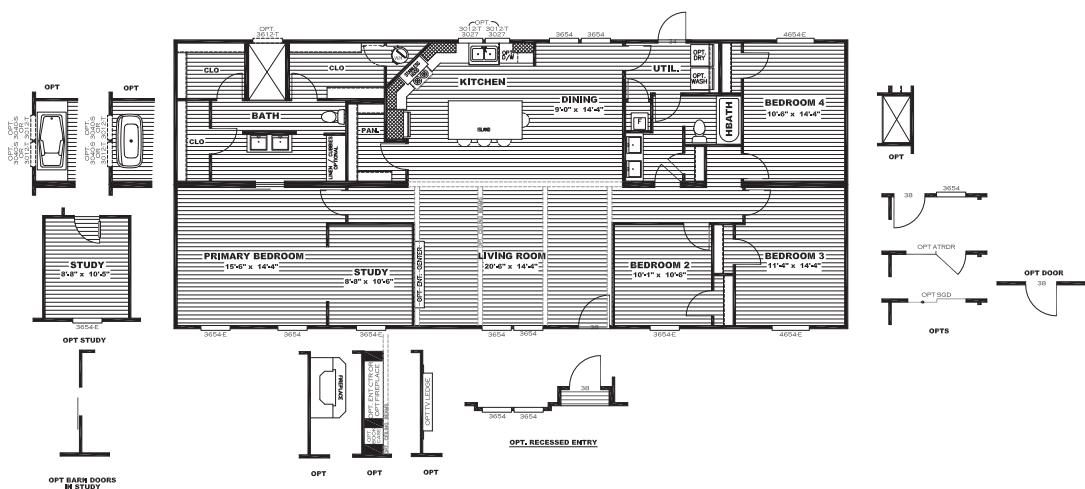
LIVING



Cascade 4 beds / 2 baths / 2,100 sq. ft.



View model online



Savannah standards

- Lux linoleum flooring throughout
- 15/32" OSB exterior wrap
- Architectural shingles
- 6-panel steel front door w/ storm
- 6-light cottage rear door
- Lined cabinets w/ mid-shelves
- Drawer over door cabinet system
- 1-piece fiberglass hall bath tub/shower
- 60" fiberglass shower w/ door - primary bath
- Water cutoffs throughout
- Porcelain lavatories
- Black lantern light - front door

eBuilt®

- SmartComfort® by Carrier
- Samsung® ENERGY STAR® certified stainless appliances
- Lux low-E windows with argon gas
- Insulated exterior doors
- 22/13/28 insulation
- Sealed duct system
- LED lighting
- Sealed exterior windows and doors

Clayton Built®

- DuraCraft® cabinet system
- Kwikset® door hardware
- Pfister® faucets
- Rheem® 40-gallon dual element water heater
- Visual Comfort and Co. lighting
- Formica countertops
- KNAUF insulation

Customer Name _____

Customer County/State _____

Customer Email _____

Customer Signature _____



The home series, floor plans, photos, renderings, specifications, features, materials and availability shown will vary by location, and are subject to change without notice.

