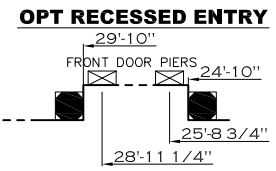
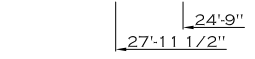
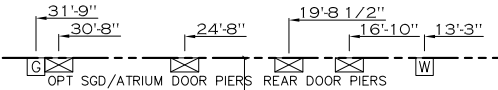
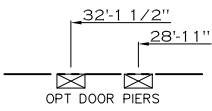
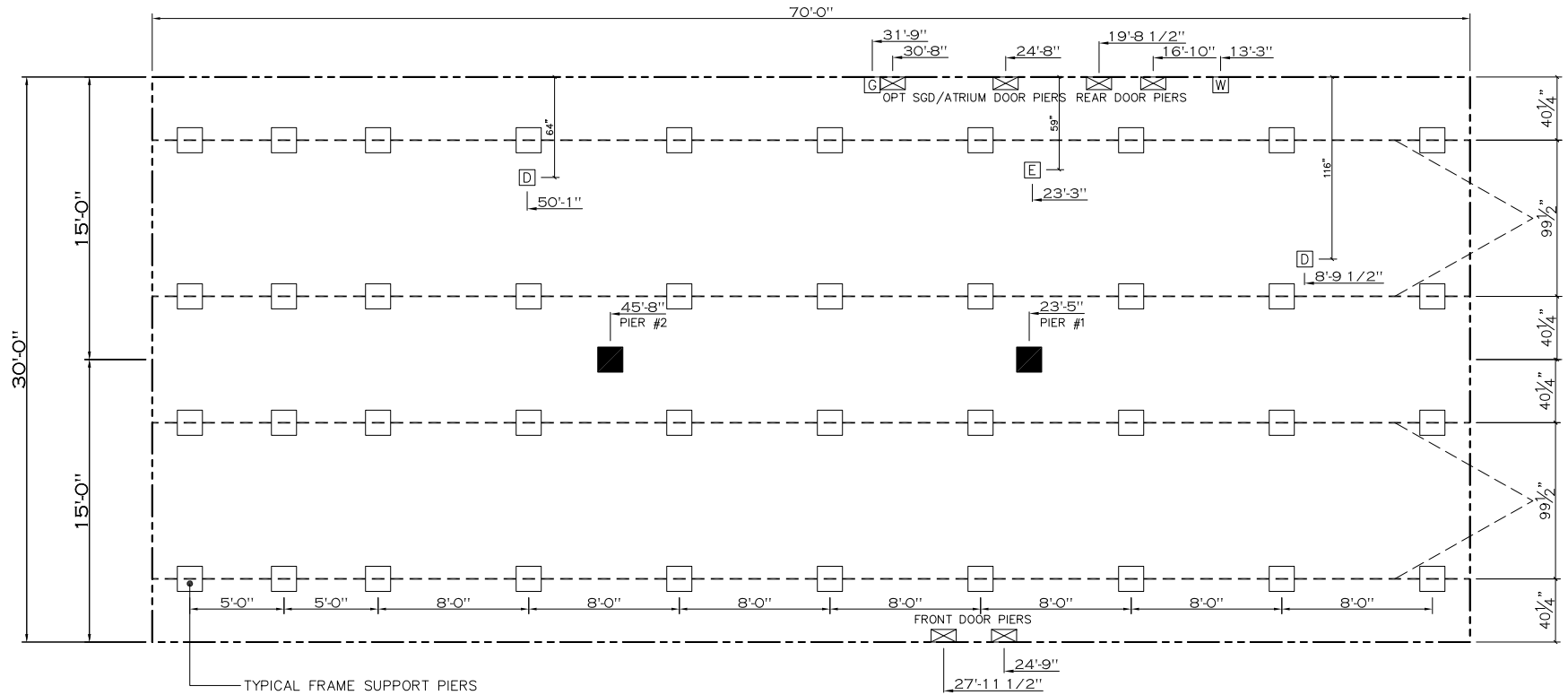


20 lb ROOF LOAD SIDEWALL OPENING PIER LOAD 32' BOX WIDTH	SIDEWALL OPENING (FT) REQUIRED PIER LOAD (LBS)					
	3	4	5	6	8	10
	1244	1413	1581	1750	2088	2425

*FOR 30 lb & 40 lb ROOF LOAD REFER TO TABLES 7b & 7c IN THE INSTALLATION MANUAL.



PERIMETER SKIRTING MATERIAL AND FOUNDATION WALL DESIGNS ARE TO ALIGN WITH THE HOME'S EXTERIOR WALL PERIMETER. AREAS AROUND PORCHES OR RECESSED ENTRIES ARE TO BE SEPARATED TO PREVENT MOISTURE FROM ACCUMULATING BENEATH THE HOME.

SERVICE DROP LEGEND	
[E]	= ELECTRICAL DROP
[W]	= WATER INLET
[D]	= DWV PLUMBING DROP
[G]	= GAS INLET

PIER LEGEND	
[□]	= SUPPORT UNDER MATING OPENING
[■]	= SUPPORT AT MATING COLUMN
[▣]	= SUPPORT UNDER MATING WALL
[■]	= PIER PORCH/RECESSED ENTRY
[□]	= PIER MAIN BEAM
[▣]	= PIER PERIMETER
[●]	= TIE-DOWN SUPPORT (QTY PER TBL M, SEE DETAIL D-6 IN FOUND. PKG.)

- GENERAL NOTES:
- PIER LOADS SHOWN ARE TO BE USED TO SIZE THE FOOTINGS BELOW THE MARRIAGEWALL FOR COLUMN SUPPORT PIERS. REFER TO TABLES 6b AND 6c IN THE INSTALLATION MANUAL FOR LOAD ON FRAME PIER FOOTINGS FOR HOMES THAT DO NOT REQUIRE PERIMETER BLOCKING. REFER TO TABLES 7b AND 7c IN THE INSTALLATION MANUAL FOR LOAD ON FRAME PIER FOOTINGS THAT REQUIRE PERIMETER BLOCKING. REFER TO TABLES 10 AND 10a TO DETERMINE FOOTING SIZE FOR ALL PIERS.
 - REFER TO TABLE 9 FOR PIER CONFIGURATION AND MAXIMUM ALLOWABLE HEIGHTS. CROSS REFERENCE THE PIER HEIGHT WITH THE MAXIMUM ALLOWABLE FLOOR HEIGHT LISTED IN THE FRAME TIEDOWN CHARTS (TABLE 18, 19, AND 20).
 - FLOOR WIDTH SHOWN IS FOR STANDARD PRODUCT ONLY. CONTACT THE MFG PLANT FOR SPECIFICATIONS OF OPTIONS ORDERED.
 - SERVICE DROP LOCATIONS IDENTIFIED ARE APPROXIMATE.
 - THE MAXIMUM SPACING FOR FRAME SUPPORT PIERS FOR 8" I-BEAMS IS 8 FEET, 10" & 12" I-BEAMS ARE 10 FEET.

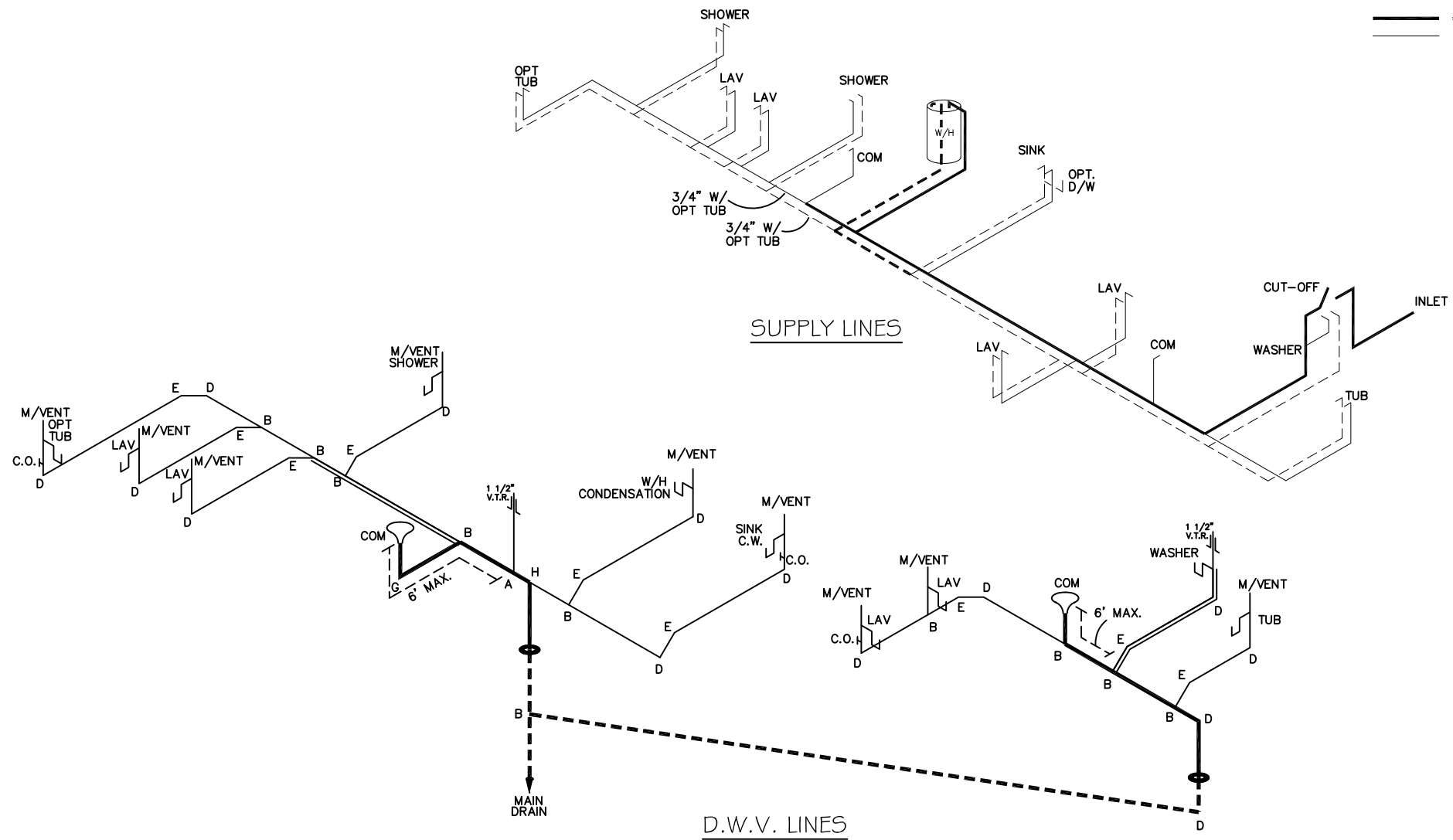
20 psf Roof Live Load		
Column Pier #	Distance from Hitch	Pier Load (lbs)
1	23.417	5406
2	45.667	5406

2100 SQ.FT. (STD PLAN "CONDITIONED")
N/A SQ.FT. (W/OPT. PORCH/RECESS "CONDITIONED")

CMH MANUFACTURING Product Designer: J PIPES	Model #: 5AV32704A	Drawing #:
	Date: 10/10/23	Scale: 37M212
32 x 70 Cascade		
PIER LOADS		

NOTE:
DASHED LINES INDICATE HOT WATER
SOLID LINES INDICATE COLD WATER

———— = 3/4"
———— = 1/2"



MDL: 24.75 FEET - 3/4"
MDL: 34 FEET - 1/2"
GALLON VOLUME: 0.77

LEGEND	
A	SHORT TURN T-Y
B	LONG TURN T-Y
C	1/4 BEND
D	LONG SWEEP 1/4 BEND
E	45 ELL
F	DBL. SANITARY TEE
G	4x3 CLOSET ELL
H	DOUBLE ELL
I	22 1/2" ELL
J	45° Y
K	LONG TURN STREET ELBOW
L	45 FTG ELL

DWV LINE SIZE CHART	
————	= 3"
————	= 2"
————	= 1 1/2"

D.W.V. LINES

APPROVED

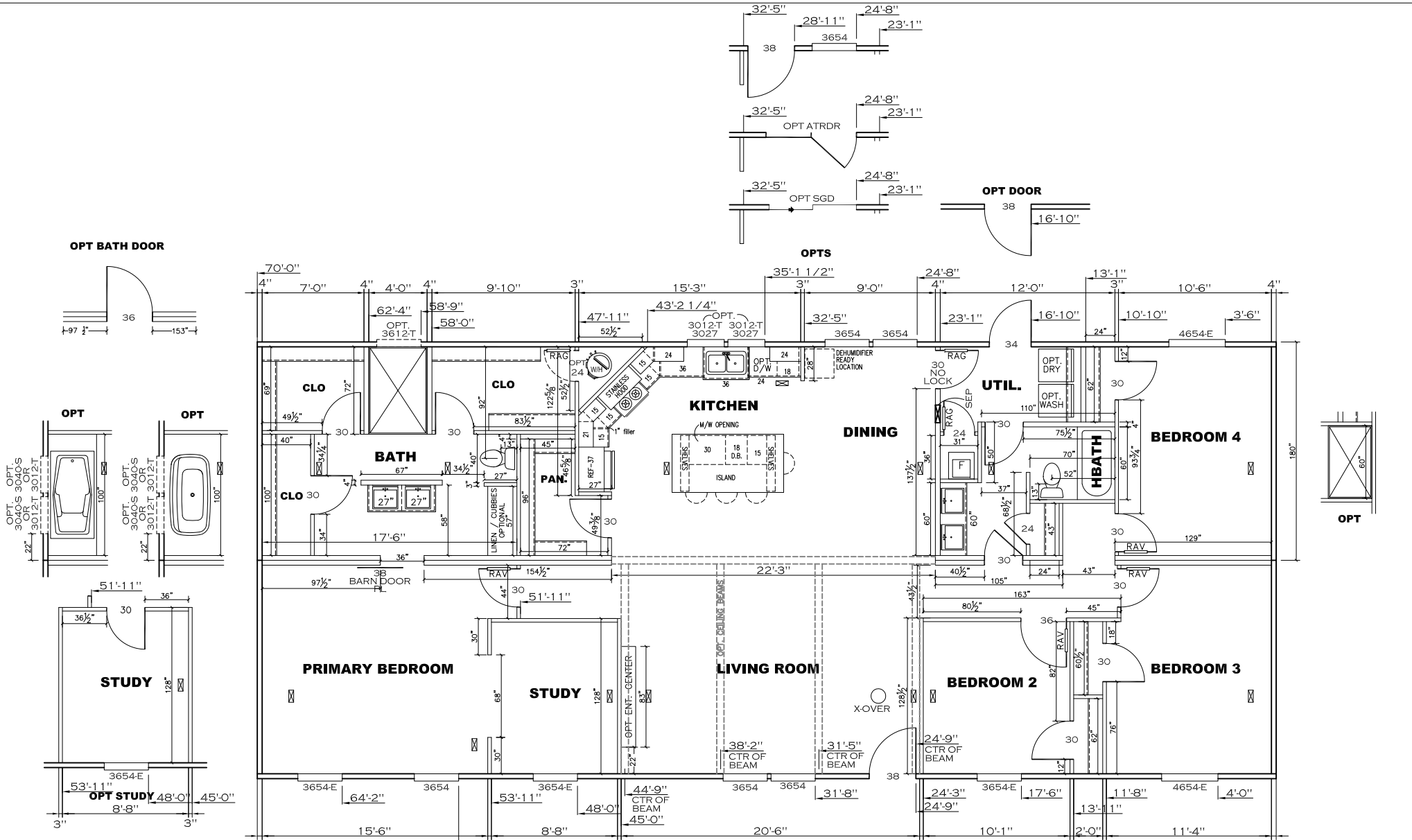
HWG

JULY 11 2024
REVISED

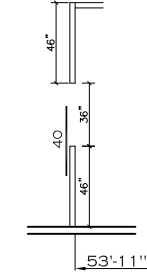
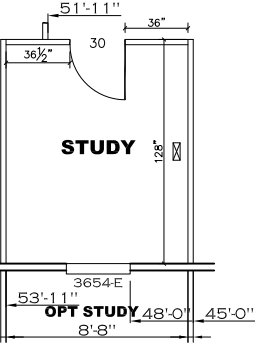
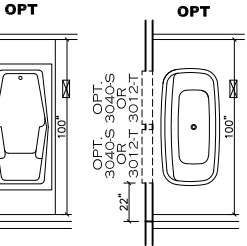
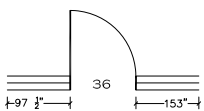
FP-32-3120
Federal Manufactured
Home Construction
And Safety Standards

APPROVED

CMH MANUFACTURING Product Designer: J PIPES		2100 SQ.FT. (STD PLAN "CONDITIONED")	
		N/A SQ.FT. (W/OPT. PORCH/RECESS "CONDITIONED")	
Model #: SAV32704A		Drawing #:	
Date: 10/10/23		Scale: 37M212	
32 x 70 Cascade			
D.W.V. and Supply Lines			

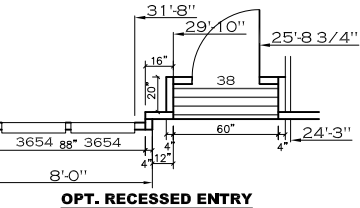
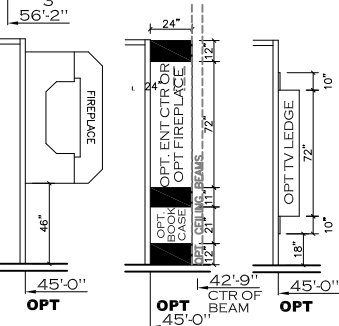


OPT BATH DOOR



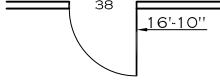
OPT BARN DOORS IN STUDY

*NOTE: TRANSOMS INSTALLED 6" A.F.F.
 MDL: 18.58 - 3/4"
 MDL: 58.50 - 1/2"
 GALLON VOLUME: 0.88

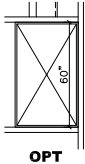


OPT. RECESSED ENTRY

OPT DOOR



OPTS

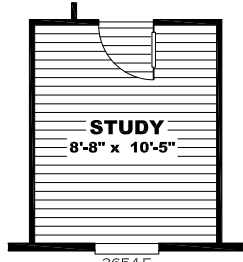
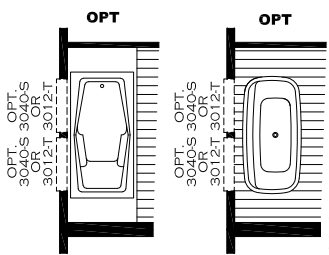
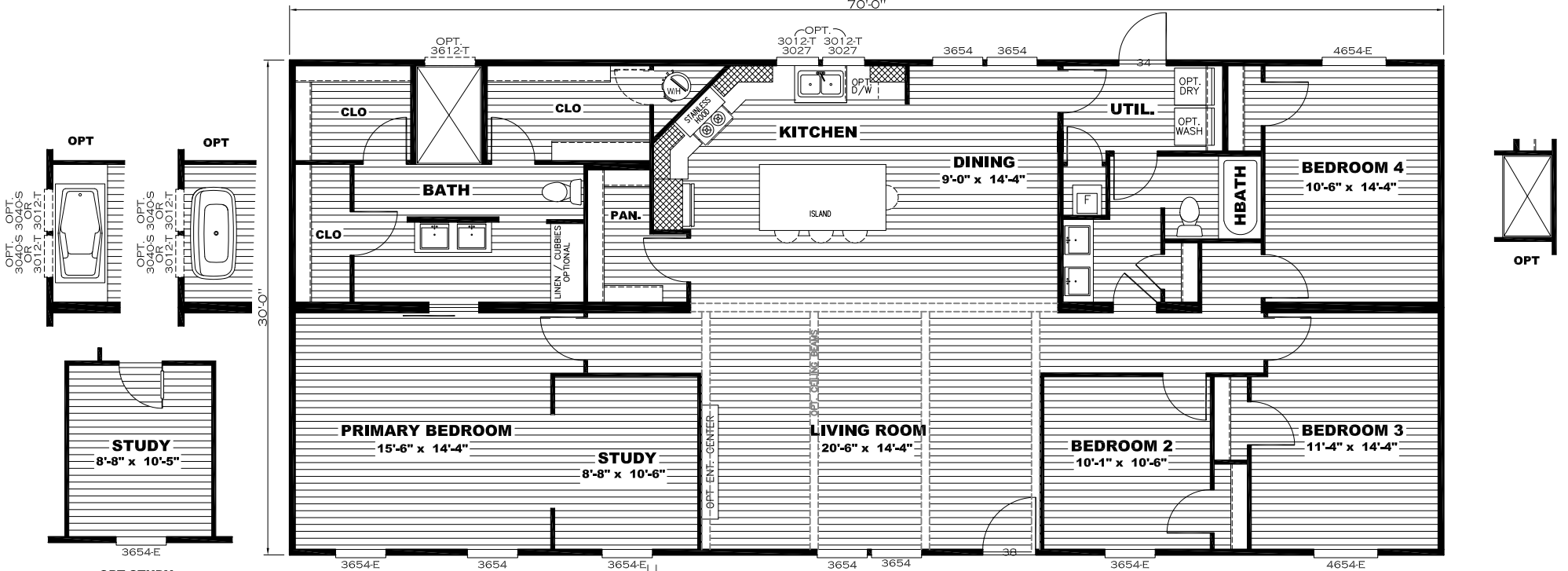
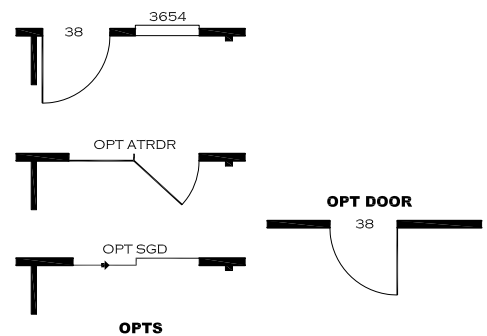


OPT

2100 SQ.FT. (STD PLAN "CONDITIONED")
 N/A SQ.FT. (W/OPT. PORCH/RECESS "CONDITIONED")

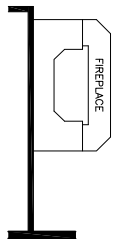
CMH MANUFACTURING Product Designer: J PIPE5	Model #: SAV32704A Date: 10/10/23	Drawing #: 37M2 12
	Scale: 32 x 70 Cascade	

FLOOR PLAN



OPT STUDY

OPT BARN DOORS IN STUDY



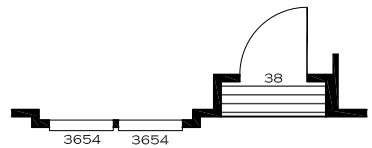
OPT



OPT

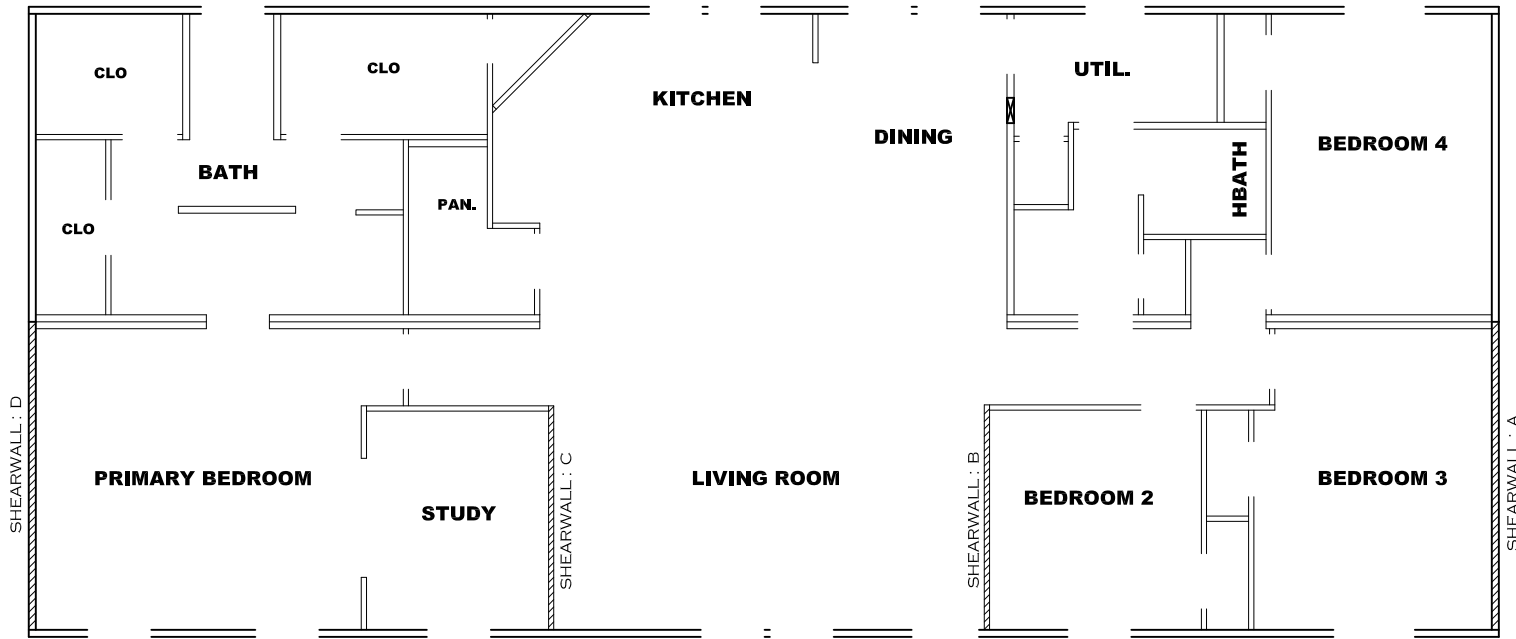


OPT



OPT. RECESSED ENTRY

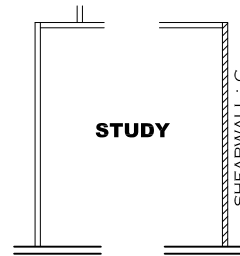
32 x 70 Cascade
 Model #: SAV32704A
 Drawing #:
 37M212



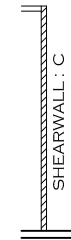
Model # 37M212
 Box Width = 180 " Double wide Minimum Joist Spacing 16 "
 Box Length = 70 ft. 99.5" 10" MIN. IBEAM No Offset Box
 No Skylights No Origami Dormer
 No Porches No Sunken Floor
 Joist Size = #2 sp 2x6 Lags 9Mx3" No Parapet Roof

Version R14.00

Wind Zone 1 Standard Roof		7/16" Rated Sheathing and Ceiling Board with 15 ga staple @ 6/12 (286,315) Chords: 2x4 SPF #3 Top Plate spliced w/2x4 MCP & 2x3 SPF Rail spliced w/ 2x4 MCP		96 inch sidewall		
Diaphragm Construction: Block Dist. X=0'						
Shearwall	Dist. / Hitch	Length	PLF	# of Joists	Lags	Notes
A	0'	156"	162	2	2/1	*
D	70'	156"	162	2	2/1	
Wind Zone 2 Standard Roof		7/16" Rated Sheathing and Ceiling Board with 15 ga staple @ 6/12 (286,315) Chords: 2x4 SPF #3 Top Plate spliced w/2x4 MCP & 2x3 SPF Rail spliced w/ 2x4 MCP		96 inch sidewall		
Diaphragm Construction: Block Dist. X=0'						
Shearwall	Dist. / Hitch	Length	PLF	# of Joists	Lags	Notes
A	0'	144"	162	2	2/1	*
B	24.38'	128"	520	4	5/2	
D	70'	128"	350	2	3/2	
Wind Zone 3 Standard Roof		7/16" Rated Sheathing and Ceiling Board with 15 ga staple @ 6/12 (286,315) Chords: 2x4 SPF #3 Top Plate spliced w/2x4 MCP & 2x3 SPF Rail spliced w/ 2x4 MCP		96 inch sidewall		
Diaphragm Construction: Block Dist. X=0'						
Shearwall	Dist. / Hitch	Length	PLF	# of Joists	Lags	Notes
A	0'	128"	350	2	3/2	*
B	24.38'	128"	430	3	4/1	
C	45.13'	128"	430	3	4/1	
D	70'	Full	162	2	2/2	
Wind Zone 1 Standard Roof		7/16" Rated Sheathing and Ceiling Board with 15 ga staple @ 6/12 (286,315) Chords: 2x4 SPF #3 Top Plate spliced w/2x4 MCP & 2x3 SPF Rail spliced w/ 2x4 MCP		96 inch sidewall		
Diaphragm Construction: Block Dist. X=0'						
Shearwall	Dist. / Hitch	Length	PLF	# of Joists	Lags	Notes
A	0'	56"	162	2	1/1	*
B	24.38'	128"	350	2	3/1	
D	70'	104"	162	2	1/1	



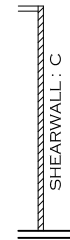
OPT STUDY



OPT



OPT



OPT

APPROVED



AUG 28 2025

FP-32-3120
 Federal Manufactured
 Home Construction
 And Safety Standards

6

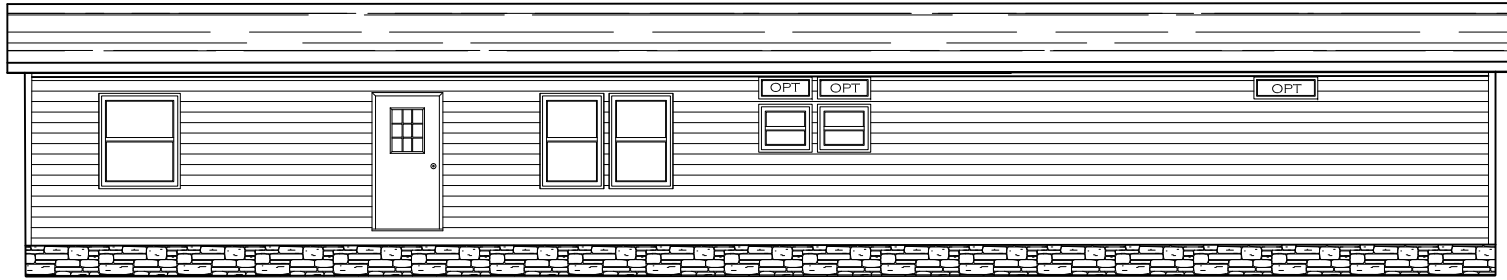
APPROVED

37m212-SW-N

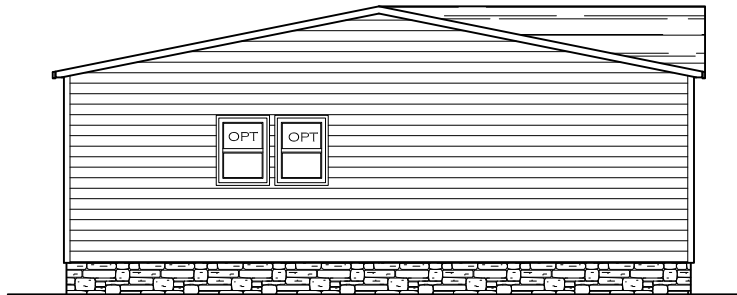
2100 SQ.FT. (STD PLAN "CONDITIONED")
 N/A SQ.FT. (W/OPT. PORCH/RECESS "CONDITIONED")

CMH MANUFACTURING Product Designer: J PIPES	Model #: SAV32704A Date: 10/10/23	Drawing #: 37M212
	Scale: 32 x 70 Cascade	
SHEARWALL PAGE		

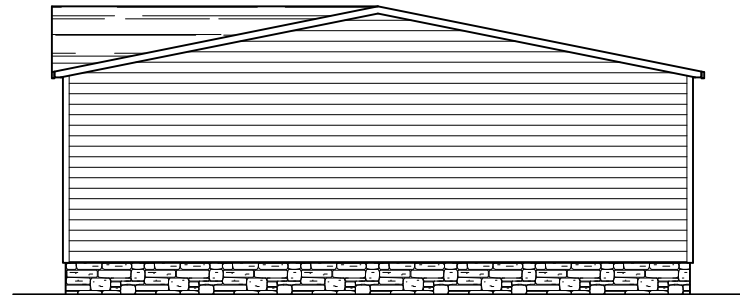
* Denotes that indicated shearwall is over full depth/width from steel chassis header.



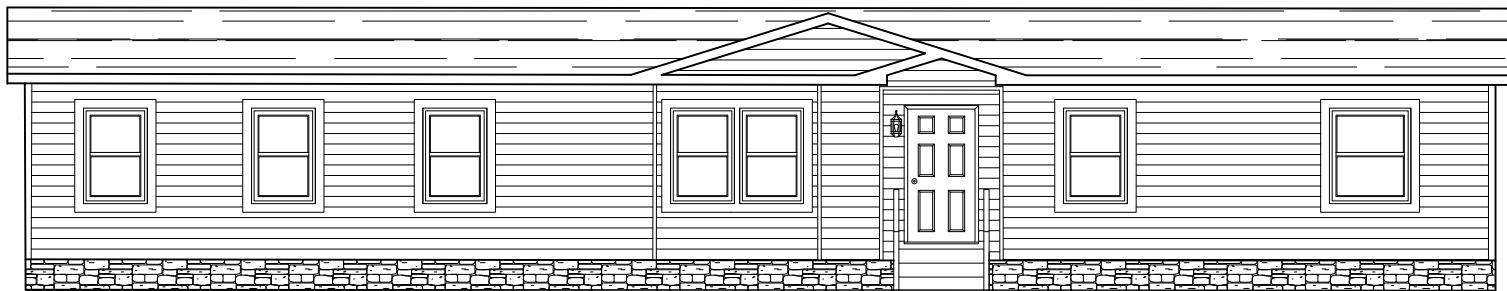
REAR ELEVATION



LEFT SIDE ELEVATION



RIGHT SIDE ELEVATION

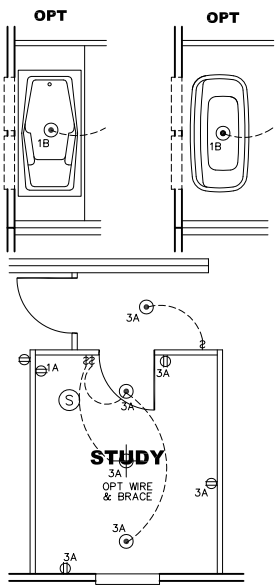
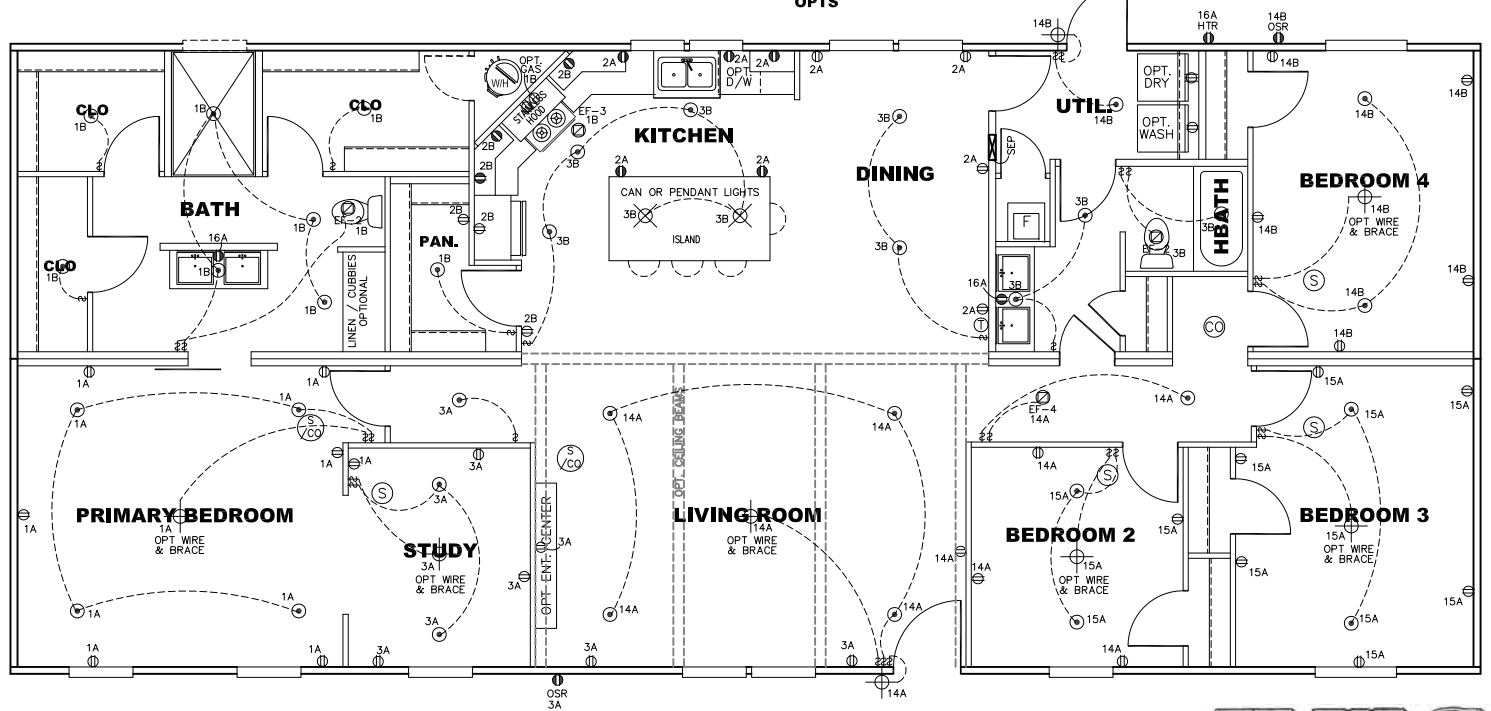
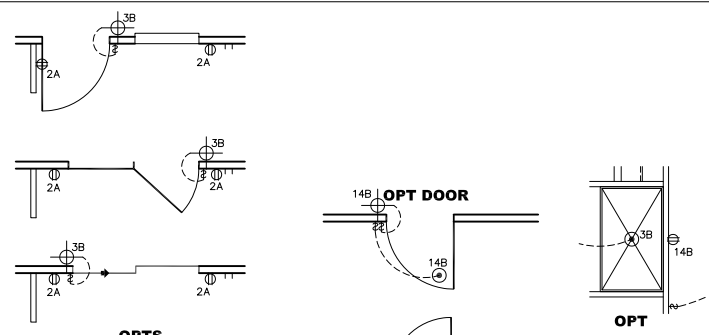


FRONT ELEVATION

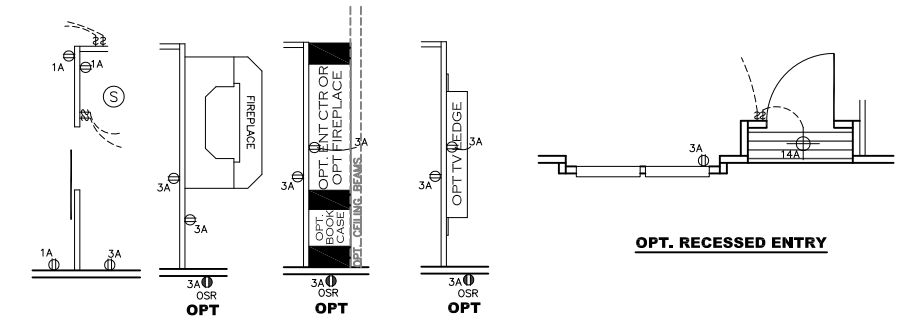
2100 SQ.FT. (STD PLAN "CONDITIONED")
 N/A SQ.FT. (W/OPT. PORCH/RECESS "CONDITIONED")

CMH MANUFACTURING	Model #: SAV32704A	Drawing #:
	Date: 4/12/22	Scale: N/A
Product Designer: E HARDWICK	32 x 70 Cascade	
ELEVATION		

CIRCUIT	CIRCUIT #	WIRE	BREAKER	CIRCUIT	CIRCUIT #	WIRE	BREAKER	CIRCUIT	CIRCUIT #	WIRE	BREAKER
LIGHT/RECEP	1A,B,3A,B,14A,B,15A	14-2	15-SP	WATER HEATER	4A,6B	SEE NOTE #8		BATHROOM	16A	12-2	20-SP
KITCHEN/DINING	2A,2B	12-2	20-SP	RANGE	5B,7A	SEE NOTE #8		OPT G/DISP	9B	SEE NOTE #8	
WASHER	12A	12-2	20-SP	FURNACE	6A,8A,B,10A,B	SEE NOTE #8		OPT SPA/WP/JAC	11A,B	SEE NOTE #8	
DRYER	5A,7B	SEE NOTE #8		OPT D/WASH	9A	SEE NOTE #8		FREEZER	N.A.	SEE NOTE #8	
				SMOKE ALARM/CO	4B	SEE NOTE #8					



- NOTES:**
- ALL CIRCUITS SHOWN ARE FOR REFERENCE AND MAY BE CHANGED BASED ON OPTIONAL COMPONENTS INSTALLED IN THE HOME.
 - REFER TO DAPIA MANUAL FOR SYMBOL CHART.
 - EITHER LIGHT OR RECEPTACLE MUST CONNECT TO SWITCH.
 - EF-1= 50 CFM EXHAUST FAN REQUIRED FOR THERMAL ZONE III THERMAL ZONES I & II MAY USE FAN OR WINDOW W/1.5 SQ. FT. OPENABLE GLASS.
 - EF-2= 50 CFM EXHAUST FAN REQUIRED THERMAL ZONE I, II, AND III.
 - EF-3= 100 CFM RANGE EXHAUST FAN, SWITCH AT HOOD.
 - EF-4= WHOLE HOUSE VENTILATION REQUIREMENTS PER DAPIA MANUAL.
 - REFER TO DAPIA MANUAL OR THE MFG. INSTALLATION INSTRUCTIONS FOR PROPER WIRE SIZE AND BREAKER SIZE FOR SPECIFIC APPLIANCE AND MODEL BEING INSTALLED.
 - ALL SMOKE ALARMS TO BE LOCATED ON THE CEILING.
 - CARBON MONOXIDE ALARMS ARE ONLY REQUIRED WHEN HOME HAS EITHER FUEL BURNING APPLIANCES, IS GARAGE READY OR IS BASEMENT READY. REFERENCE DAPIA MANUAL FOR ADDITIONAL INFORMATION.
 - DIMENSIONS SHOWN ON PRINT ARE APPROXIMATE AND TO BE USED ONLY AS A GUIDELINE.



OPT BARN DOORS IN STUDY

OPT. RECESSED ENTRY

APPROVED

HWG

JULY 11 2024
REVISED

FP-32-3120
Federal Manufactured
Home Construction
And Safety Standards

APPROVED

2100 SQ.FT. (STD PLAN "CONDITIONED")
N/A SQ.FT. (W/OPT. PORCH/RECESS "CONDITIONED")

CMH MANUFACTURING	Model #: 5AV32704A	Drawing #:
	Date: 10/10/23	Scale: 3/8"=1'-0"
Product Designer: J PIPES		32 x 70 Cascade
ELECTRICAL PLAN-06		