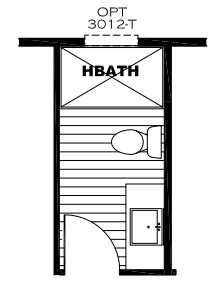
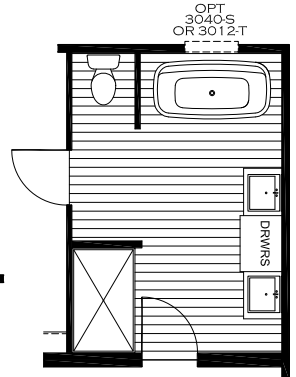


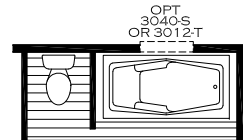
OPT. 5TH BEDROOM & 3RD BATH



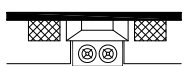
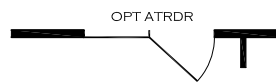
3RD BATH OPT. 2



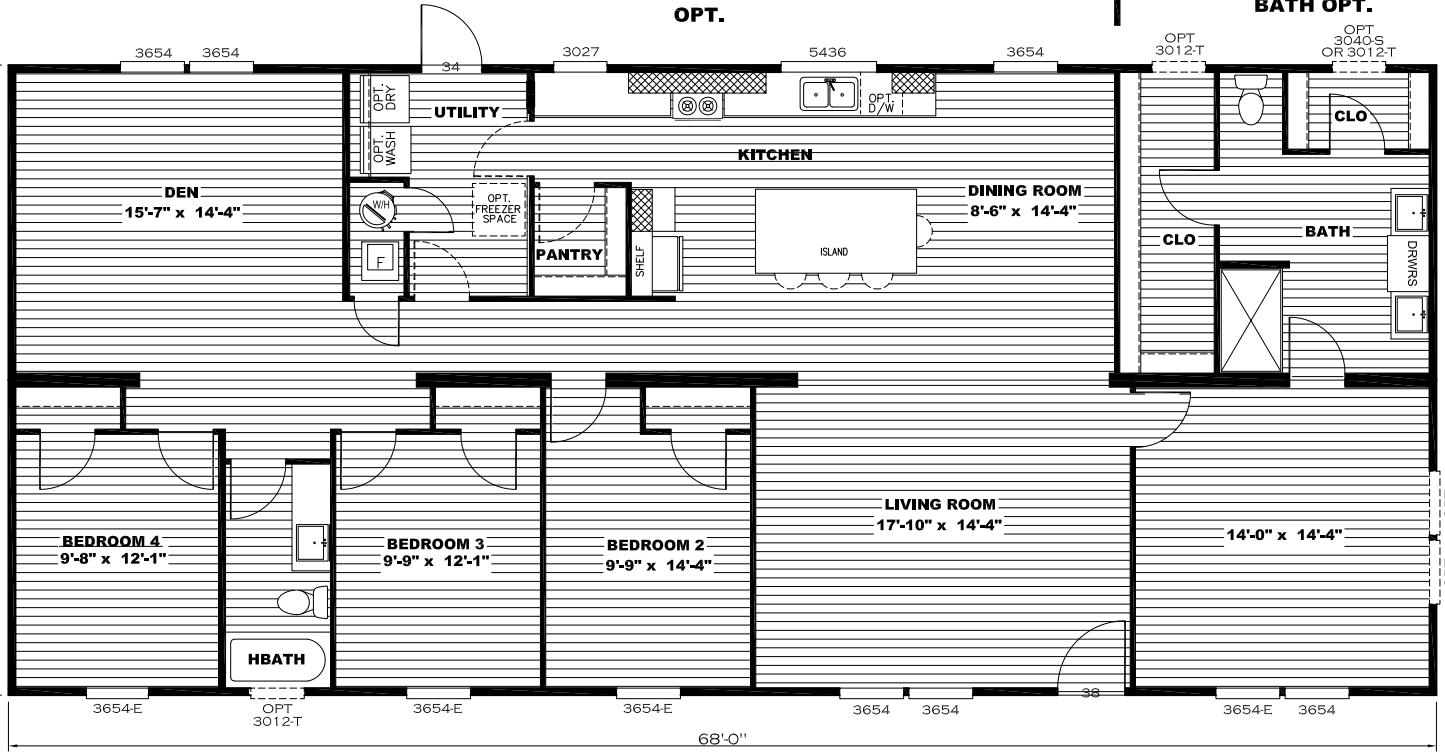
BATH OPT.



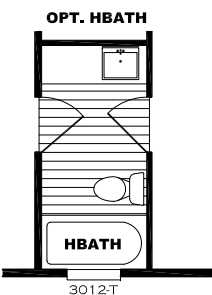
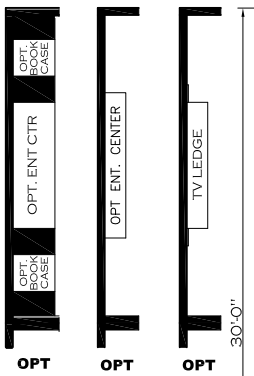
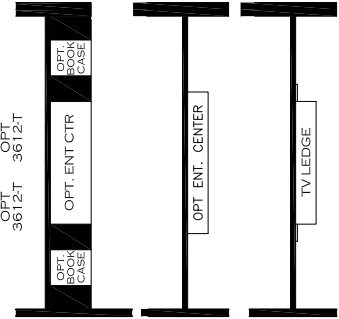
BATH OPT. 2



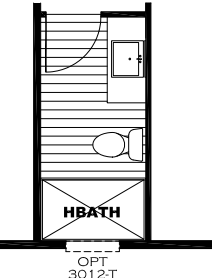
OPT.



LIVING ROOM OPTIONS



OPT. HBATH 2



OPT 3012-T

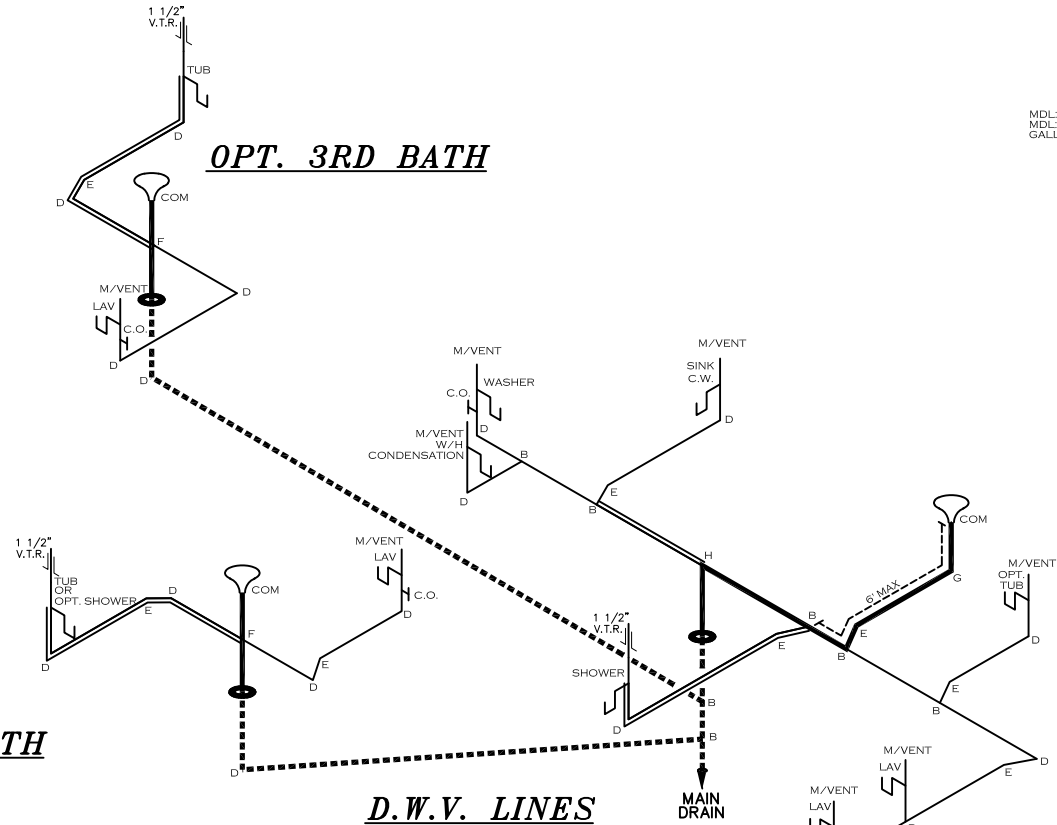
32 X 68 Locklear
 Model #: SAV32684A
 Drawing #:
 37M254

NOTE:
DASHED LINES INDICATE HOT WATER
SOLID LINES INDICATE COLD WATER

— = 3/4"
— = 1/2"

MDL: 32 FEET - 3/4"
MDL: 38.75 FEET - 1/2"
GALLON VOLUME: 0.94

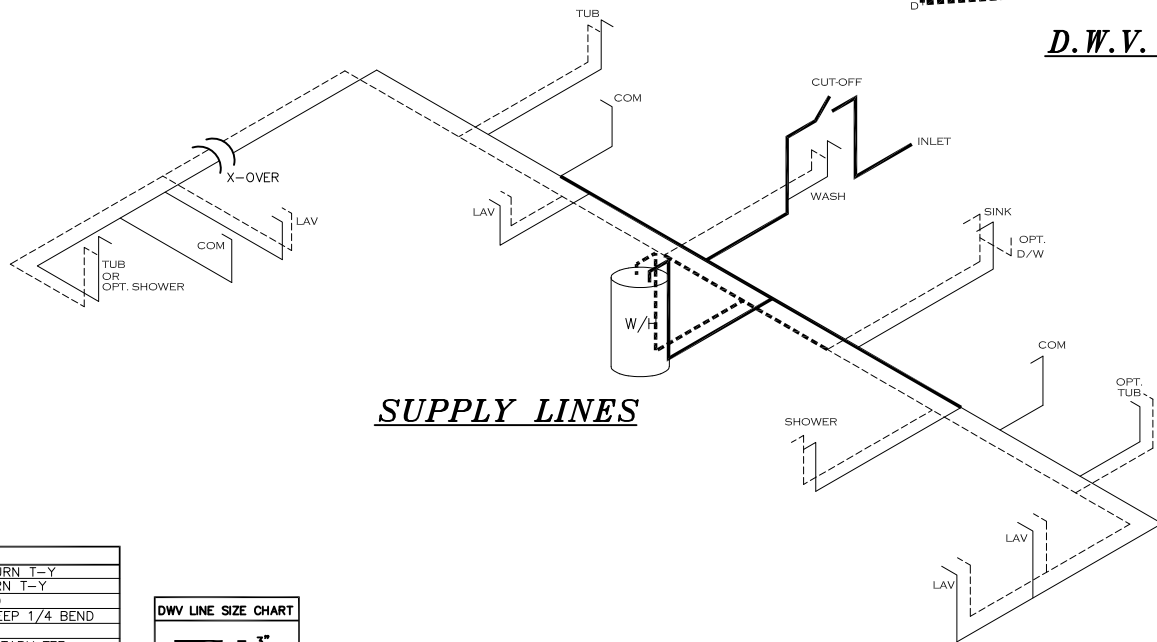
OPT. 3RD BATH



OPT. 3RD BATH

D.W.V. LINES

SUPPLY LINES



HWC

APR 10 2025

REVISED

Federal Manufactured
Home Construction 6
And Safety Standards

APPROVED

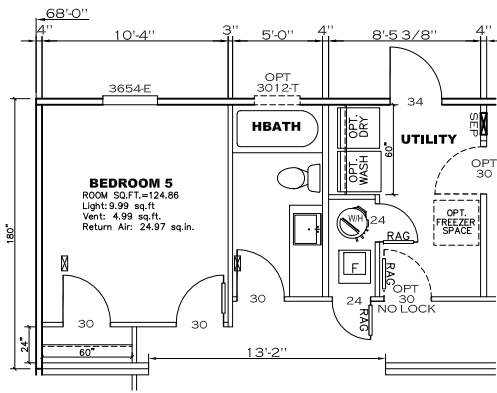
APPROVED

LEGEND	
A	SHORT TURN T-Y
B	LONG TURN T-Y
C	1/4 BEND
D	LONG SWEEP 1/4 BEND
E	45 ELL
F	DBL. SANITARY TEE
G	4x3 CLOSET ELL
H	DOUBLE ELL
I	22 1/2" ELL
J	45° Y
K	LONG TURN STREET ELBOW
L	45 FTG ELL

DWV LINE SIZE CHART	
—	= 3"
—	= 2"
—	= 1 1/2"

2040 SQ.FT. (STD PLAN "CONDITIONED")
N/A SQ.FT. (W/OPT. PORCH/RECESS "CONDITIONED")

Clayton Built	Model #: SAV32G84A	Drawing #:
	Date: 6/27/23	Scale: N/A
Product Designer: E HARDWICK		32 X 68 Locklear
D.W.V. and Supply Lines		



APPROVED

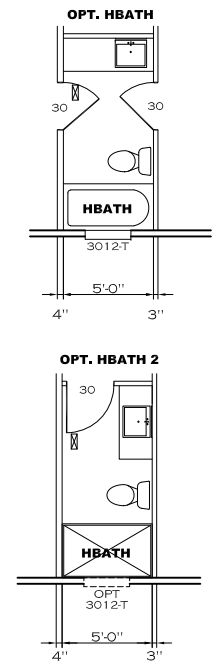
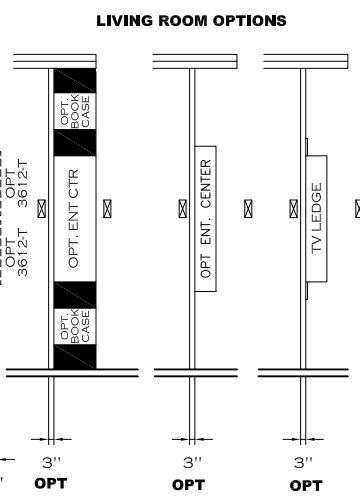
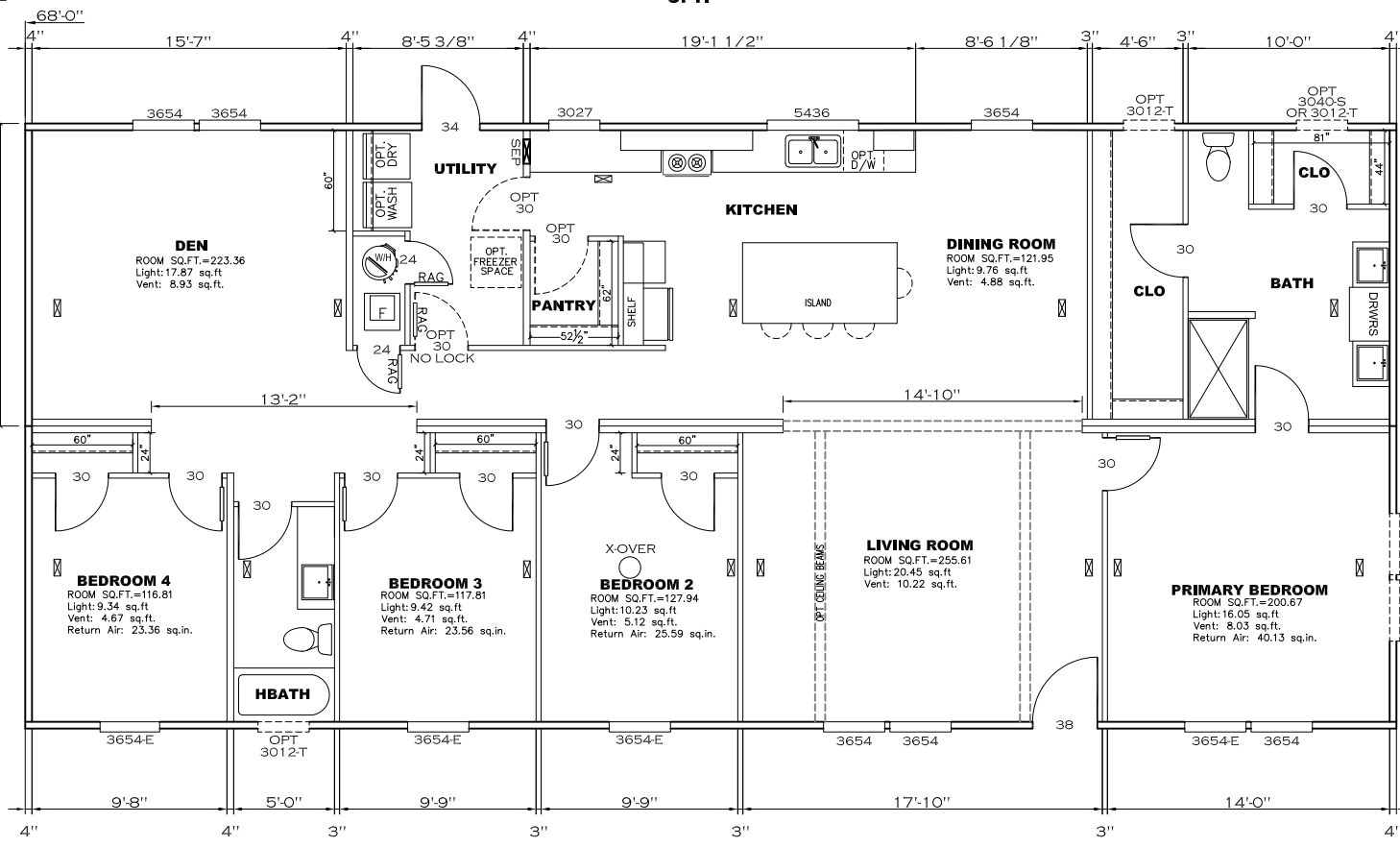
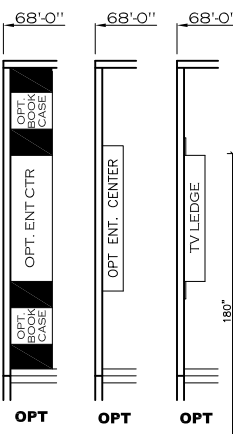
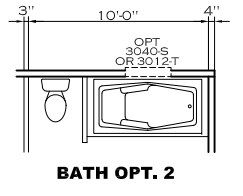
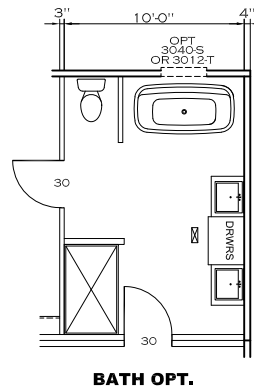
HWC

JAN 13 2026

REVISED

Federal Manufactured
Home Construction
And Safety Standards

APPROVED



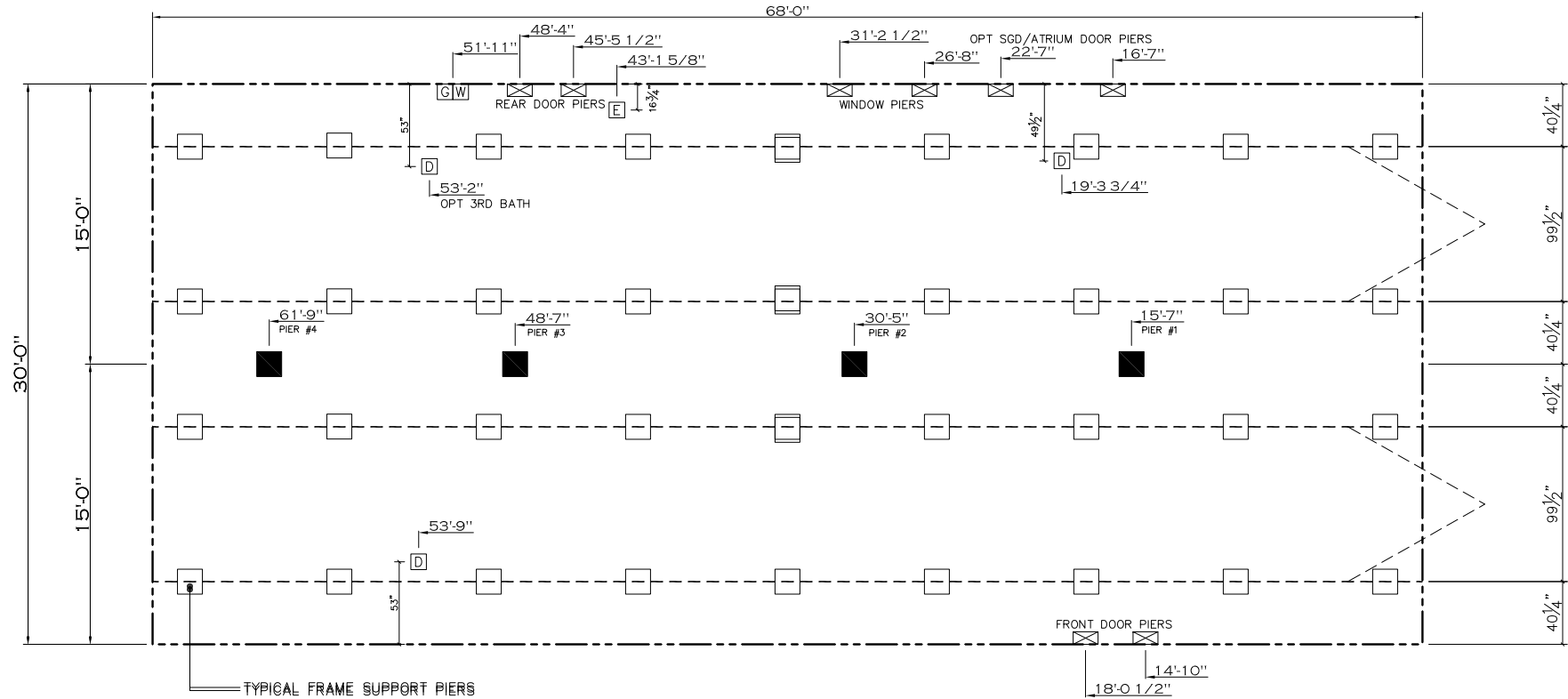
NOTE: TRANSOMS INSTALLED 6" A.F.F.

2040 SQ.FT. (STD PLAN "CONDITIONED")
N/A SQ.FT. (W/OPT. PORCH/RECESS "CONDITIONED")

Clayton Built	Model #: SAV32684A	Drawing #:
	Date: 9/12/25	Scale: N/A
Product Designer: Jessica Lambert		32 X 68 Locklear
FLOOR PLAN		

20 lb ROOF LOAD SIDEWALL OPENING PIER LOAD 32' BOX WIDTH	SIDEWALL OPENING (FT)					
	3	4	5	6	8	10
	1244	1413	1581	1750	2088	2425

*FOR 30 lb & 40 lb ROOF LOAD REFER TO TABLES 7b & 7c IN THE INSTALLATION MANUAL.



GENERAL NOTES:

- PIER LOADS SHOWN ARE TO BE USED TO SIZE THE FOOTINGS BELOW THE MARRIAGEWALL FOR COLUMN SUPPORT PIERS. REFER TO TABLES 6b AND 6c IN THE INSTALLATION MANUAL FOR LOAD ON FRAME PIER FOOTINGS FOR HOMES THAT DO NOT REQUIRE PERIMETER BLOCKING. REFER TO TABLES 7b AND 7c IN THE INSTALLATION MANUAL FOR LOAD ON FRAME PIER FOOTINGS THAT REQUIRE PERIMETER BLOCKING. REFER TO TABLES 10 AND 10g TO DETERMINE FOOTING SIZE FOR ALL PIERS.
- REFER TO TABLE 9 FOR PIER CONFIGURATION AND MAXIMUM ALLOWABLE HEIGHTS. CROSS REFERENCE THE PIER HEIGHT WITH THE MAXIMUM ALLOWABLE FLOOR HEIGHT LISTED IN THE FRAME TIEDOWN CHARTS (TABLE 18, 19, AND 20).
- FLOOR WIDTH SHOWN IS FOR STANDARD PRODUCT ONLY. CONTACT THE MFG PLANT FOR SPECIFICATIONS OF OPTIONS ORDERED.
- SERVICE DROP LOCATIONS IDENTIFIED ARE APPROXIMATE.
- THE MAXIMUM SPACING FOR FRAME SUPPORT PIERS FOR 8" I-BEAMS IS 8 FEET, 10" & 12" I-BEAMS ARE 10 FEET.

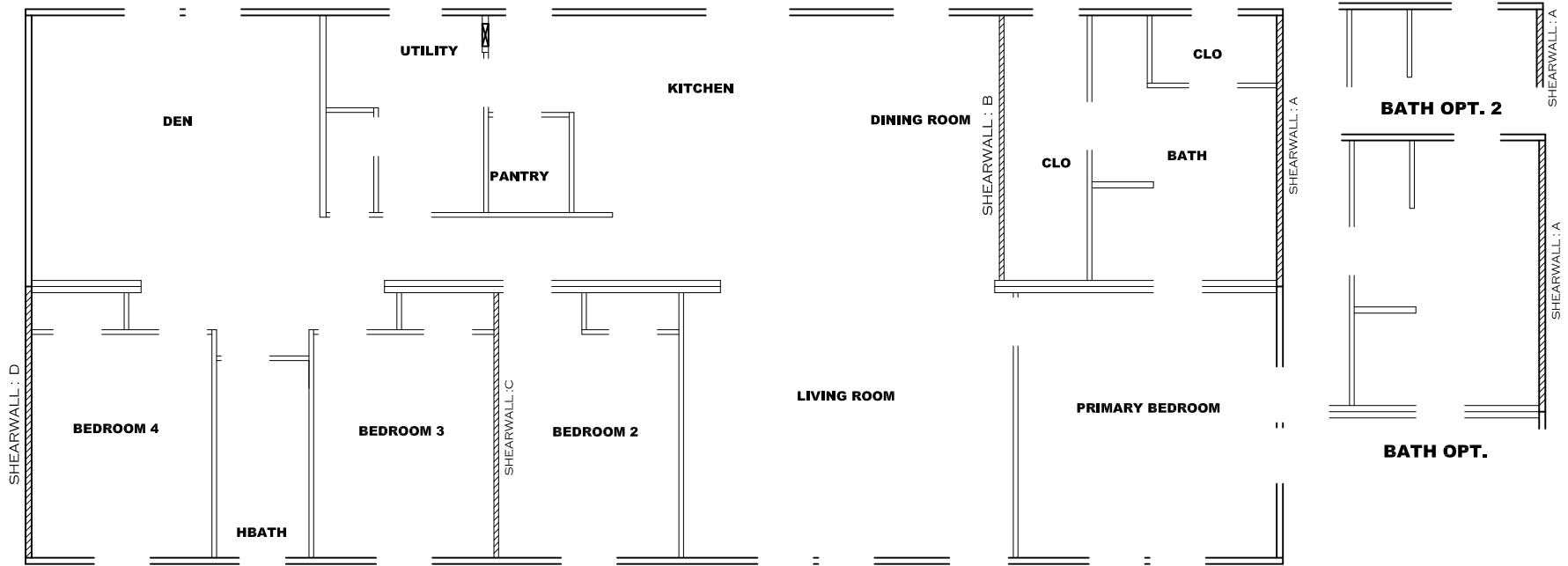
PIER LEGEND	
□	= SUPPORT UNDER MATING OPENING
■	= SUPPORT AT MATING COLUMN
⊗	= SUPPORT UNDER MATING WALL
■	= PIER PORCH/RECESSED ENTRY
□	= PIER MAIN BEAM
⊞	= PIER PERIMETER
●	= TIE-DOWN SUPPORT (QTY PER TBL M, SEE DETAIL D-6 IN FOUND. PKG.)

SERVICE DROP LEGEND	
E	= ELECTRICAL DROP
W	= WATER INLET
D	= DWV PLUMBING DROP
G	= GAS INLET

20 psf Roof Live Load		
Column Pier #	Distance from Hitch	Pier Load (lbs)
1	15.583	3963
2	31.417	3963
3	48.583	3363
4	61.75	3363

2040 SQ.FT. (STD PLAN "CONDITIONED")
N/A SQ.FT. (W/OPT. PORCH/RECESS "CONDITIONED")

Clayton Built	Model #: SAV32684A	Drawing #:
	Date: 6/27/23	Scale: N/A
Product Designer: E HARDWICK		32 X 68 Locklear
PIER LOADS		



Model # 37m254

Box Width = 180 " Double wide Minimum Joist Spacing 16 "
 Box Length = 68 ft. 95.5" 12' MIN. IBEAM No Offset Box
 No Skylights No Origami Dormer
 No Porches No Sunken Floor
 Joist Size = #2 spf 2x6 Lags 9Mx3" No Parapet Roof

Version R13.19

Wind Zone 1 Standard Roof		Ceiling board only [152 plf] Chords: 2x4 SPF Stud Top Plate & 1x4 SPF Rail. Each spliced w/2x4 MCP.				96 inch sidewall
Shearwall	Dist./ Hitch	Length	PLF	# of Joists	Lags	Notes
A	0'	36"	162	2	1/1	*
B	15.21'	96"	162	2	1/1	
C	42.54'	120"	162	2	2/1	
D	68'	60"	162	2	1/1	
Wind Zone 2 Standard Roof		(3/8" sheathing only with 15 gax 1.5" at 5"/10" oc. (197 plf) Chords: 2x4 SPF Stud Top Plate & 1x4 SPF Rail. Each spliced w/2x4 MCP.				96 inch sidewall
Shearwall	Dist./ Hitch	Length	PLF	# of Joists	Lags	Notes
A	0'	88"	162	2	1/1	*
B	15.21'	136"	324	2	3/1	
C	42.54'	Full	324	2	2/2	
D	68'	148"	162	2	2/1	
Wind Zone 3 Standard Roof		(3/8" sheathing only with 15 gax 1.5" at 5"/10" oc. (197 plf) Chords: 2x4 SPF Stud Top Plate & 1x4 SPF Rail. Each spliced w/2x4 MCP.				96 inch sidewall
Shearwall	Dist./ Hitch	Length	PLF	# of Joists	Lags	Notes
A	0'	108"	162	2	2/1	*
B	15.21'	Full	324	2	2/2	
C	42.54'	144"	425	2	5/2	
D	68'	Full	425	2	5/5	
Wind Zone 1 Standard Roof		(3/8" sheathing only with 15 gax 1.5" at 5"/10" oc. (197 plf) Chords: 2x4 SPF #3 Top Plate spliced w/ 3x4 MCP & 1x6 SPF Rail spliced w/				96 inch sidewall
Shearwall	Dist./ Hitch	Length	PLF	# of Joists	Lags	Notes
A	0'	152"	162	2	2/1	*
D	68'	152"	162	2	2/1	

APPROVED



APPROVED

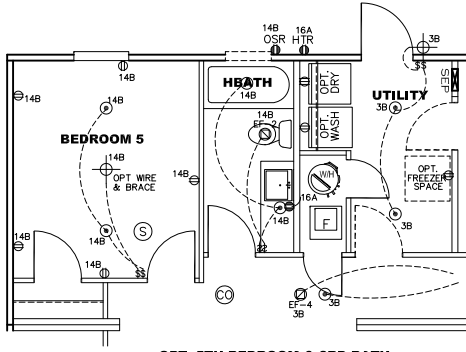
AUG 10 2023

Federal Manufactured Home Construction 6 And Safety Standards

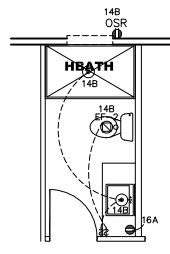
2040 SQ.FT. (STD PLAN "CONDITIONED")
 N/A SQ.FT. (W/OPT. PORCH/RECESS "CONDITIONED")

CMH MANUFACTURING Product Designer: E HARDWICK	Model #: SAV32684A Date: 6/27/23 Scale: N/A	Drawing #: 37M254 32 X 68 Locklear
	SHEARWALL PAGE	

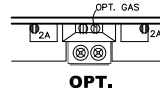
- NOTES:
1. ALL CIRCUITS SHOWN ARE FOR REFERENCE AND MAY BE CHANGED BASED ON OPTIONAL COMPONENTS INSTALLED IN THE HOME.
 2. REFER TO DAPIA MANUAL FOR SYMBOL CHART.
 3. EITHER LIGHT OR RECEPTACLE MUST CONNECT TO SWITCH.
 4. EF-1= 50 CFM EXHAUST FAN REQUIRED FOR THERMAL ZONE I III THERMAL ZONES I & II MAY USE FAN OR WINDOW W/1.5 SQ. FT. OPENABLE GLASS.
 5. EF-2= 50 CFM EXHAUST FAN REQUIRED THERMAL ZONE I, II, AND III.
 6. EF-3= 100 CFM RANGE EXHAUST FAN, SWITCH AT HOOD.
 7. EF-4= WHOLE HOUSE VENTILATION REQUIREMENTS PER DAPIA MANUAL.
 8. REFER TO DAPIA MANUAL OR THE MFG. INSTALLATION INSTRUCTIONS FOR PROPER WIRE SIZE AND BREAKER SIZE FOR SPECIFIC APPLIANCE AND MODEL BEING INSTALLED.
 9. ALL SMOKE ALARMS TO BE LOCATED ON THE CEILING.
 10. CARBON MONOXIDE ALARMS ARE ONLY REQUIRED WHEN HOME HAS EITHER FUEL BURNING APPLIANCES, IS GARAGE READY OR IS BASEMENT READY. REFERENCE DAPIA MANUAL FOR ADDITIONAL INFORMATION.
 11. DIMENSIONS SHOWN ON PRINT ARE APPROXIMATE AND TO BE USED ONLY AS A GUIDELINE.



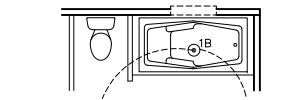
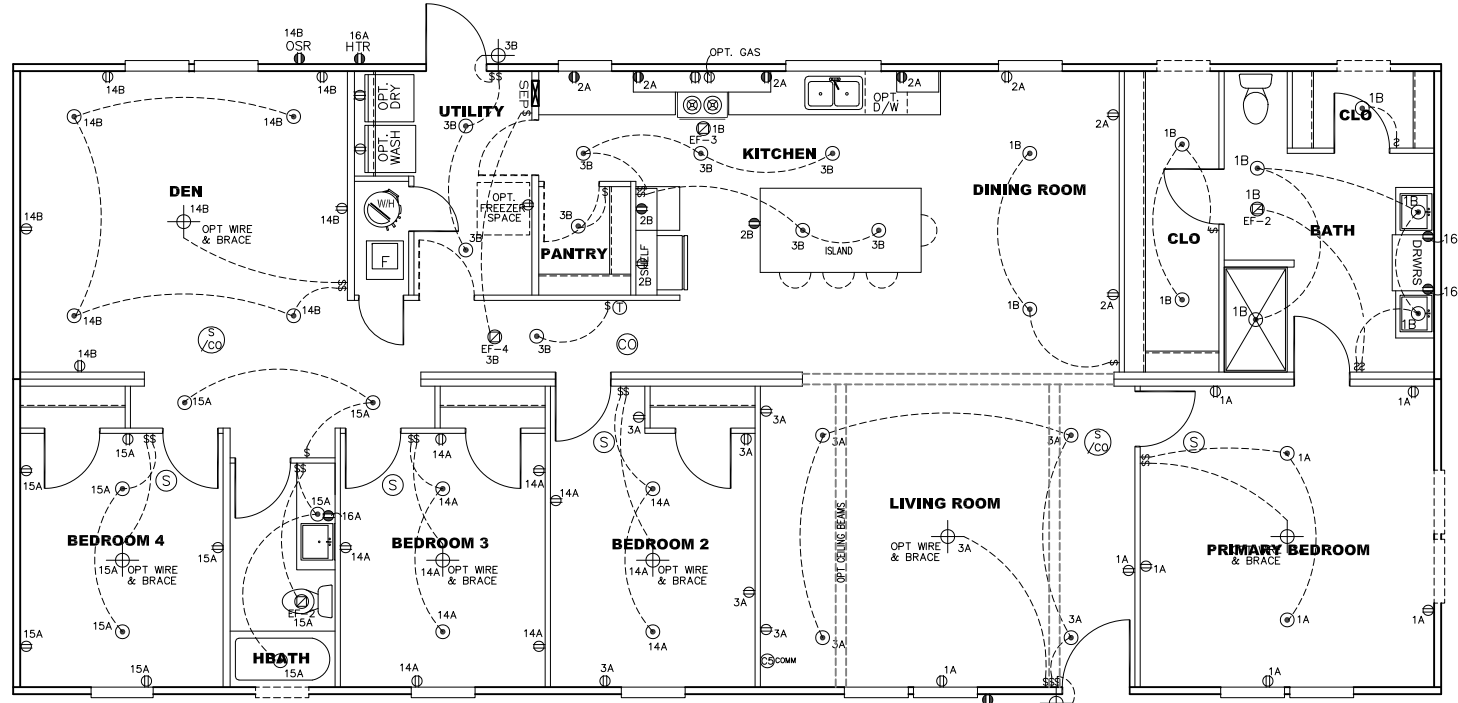
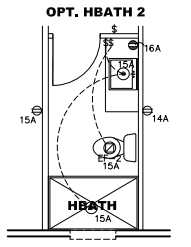
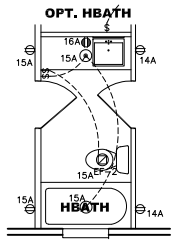
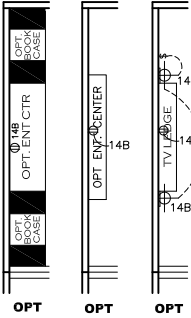
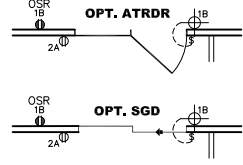
OPT. 5TH BEDROOM & 3RD BATH



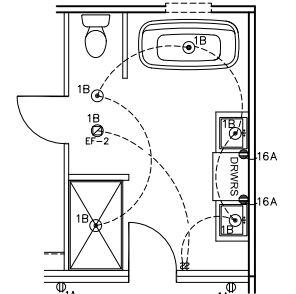
3RD BATH OPT. 2



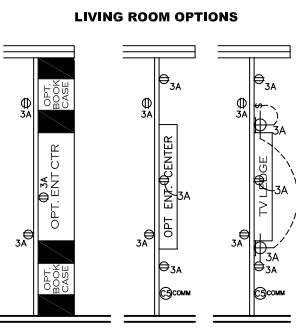
OPT.



BATH OPT. 2



BATH OPT.



LIVING ROOM OPTIONS

CIRCUIT	CIRCUIT #	WIRE	BREAKER	CIRCUIT	CIRCUIT #	WIRE	BREAKER	CIRCUIT	CIRCUIT #	WIRE	BREAKER
LIGHT/RECEP	1A,B,3A,B,14A,B,15A	14-2	15-SP	WATER HEATER	4A,6B	SEE NOTE #8		BATHROOM	16 A	12-2	20-SP
KITCHEN/DINING	2A, 2B	12-2	20-SP	RANGE	5B,7A	SEE NOTE #8		OPT G/DISP	9B	SEE NOTE #8	
WASHER	12A	12-2	20-SP	OPT GAS RANGE	15B	SEE NOTE #8		OPT SPRT WP/JAC	11A,B	SEE NOTE #8	
DRYER	5A,7B	SEE NOTE #8		FURNACE	6A,8A,B,10A,B	SEE NOTE #8		FREEZER	13A	SEE NOTE #8	
				OPT D/WASH	9A	SEE NOTE #8		OPT M/W	13B	SEE NOTE #8	
				SMOKE ALARM	4B	SEE NOTE #8					

2040 SQ.FT. (STD PLAN "CONDITIONED")
N/A SQ.FT. (W/OPT. PORCH/RECESS "CONDITIONED")

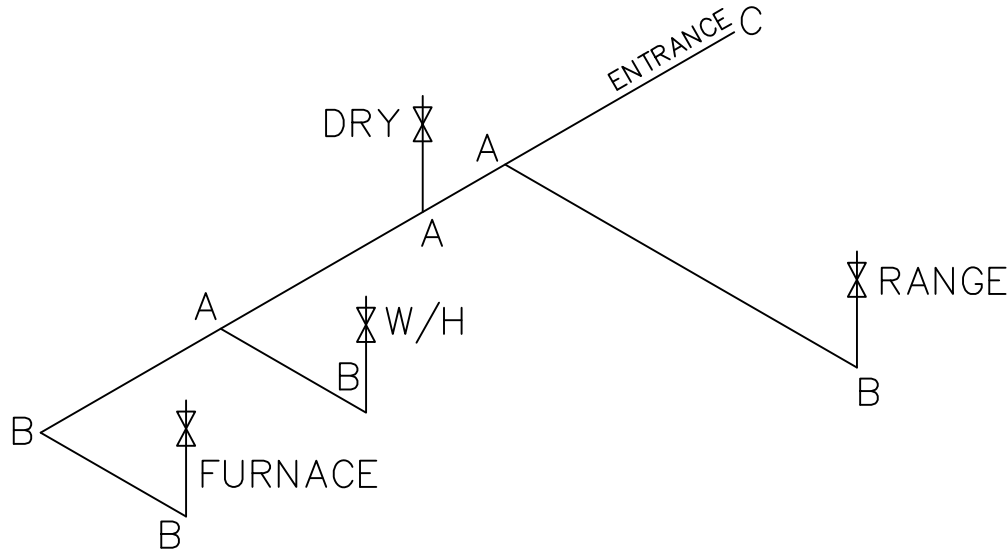
Model #: SAV32684A Drawing #:
Date: 9/11/25 Scale: N/A 37M254

Product Designer: Jessica Lambert 32 X 68 Locklear

ELECTRICAL PLAN-06

LEGEND		APPLIANCE BTU's RATINGS MAX. INPUT	
SYM	FITTINGS		
A	TEE	FURNACE	65,000 BTU'S
B	90 ELL	W/H	37,000 BTU'S
X	VALVE	RANGE	52,000 BTU'S
C	CAP	DRYER	22,000 BTU'S

MDL=20'



NOTES:

- 1) ALL PIPE IS 3/4" I.D. CAST (EXCEPT WHERE NOTED OTHERWISE)
- 2) MDL=MAX. DETERMINED LENGTH OF PIPE
- 3) FITTING MAY BE ADDED OR SUBTRACTED TO TRAVERSE VARIATIONS IN AXLE QUANTITY, PLACEMENT, AND FRAME TYPE.
- 4) INLET LOCATION MAY VARY TO STAY WITHIN MAX. DETERMINED LENGTH

APPROVED

HWG

APPROVED

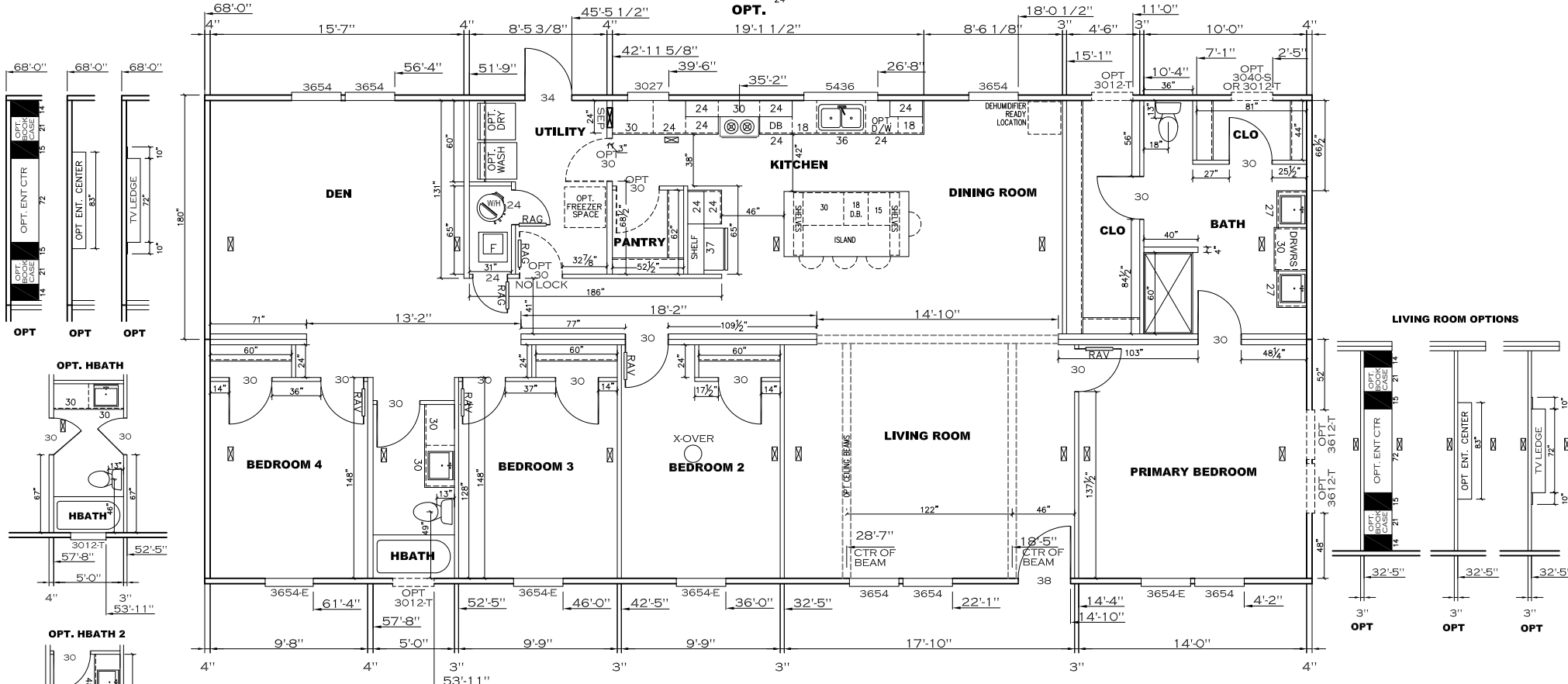
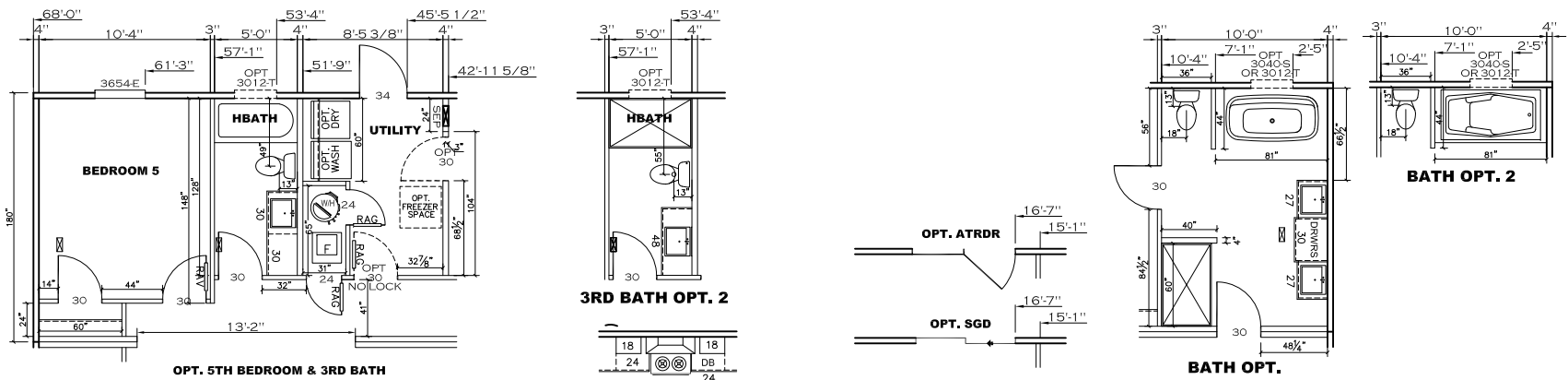
AUG 10 2023

Federal Manufactured
Home Construction 6
And Safety Standards

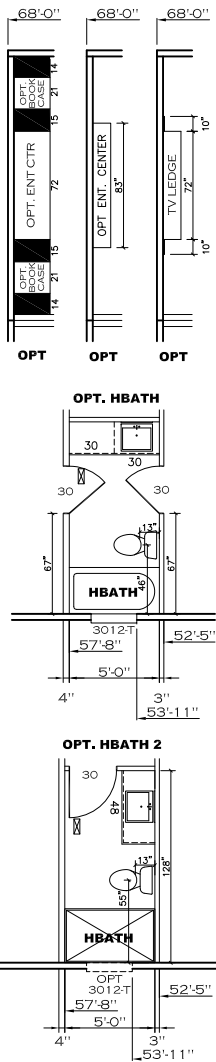
GAS LINE SIZE CHART	
	= 1"
	= 3/4"

2040 SQ.FT. (STD PLAN "CONDITIONED")
N/A SQ.FT. (W/OPT. PORCH/RECESS "CONDITIONED")

CMH MANUFACTURING	Model #: SAV32684A	Drawing #:
	Date: 6/27/23	Scale: N/A
Product Designer: E HARDWICK		32 X 68 Locklear
GAS LINE DETAIL		



MDL: 44.83 - 3/4"
 MDL: 40.40 - 1/2"
 GALLON VOLUME: 1.20
 NOTE: TRANSOMS INSTALLED 6" A.F.F.



2040 SQ.FT. (STD PLAN "CONDITIONED")
 N/A SQ.FT. (W/OPT. PORCH/RECESS "CONDITIONED")

	Model #: SAV32684A	Drawing #:
	Date: 1/8/26	Scale: N/A
Product Designer: Jessica Lambert		32 X 68 Locklear

FLOOR PLAN