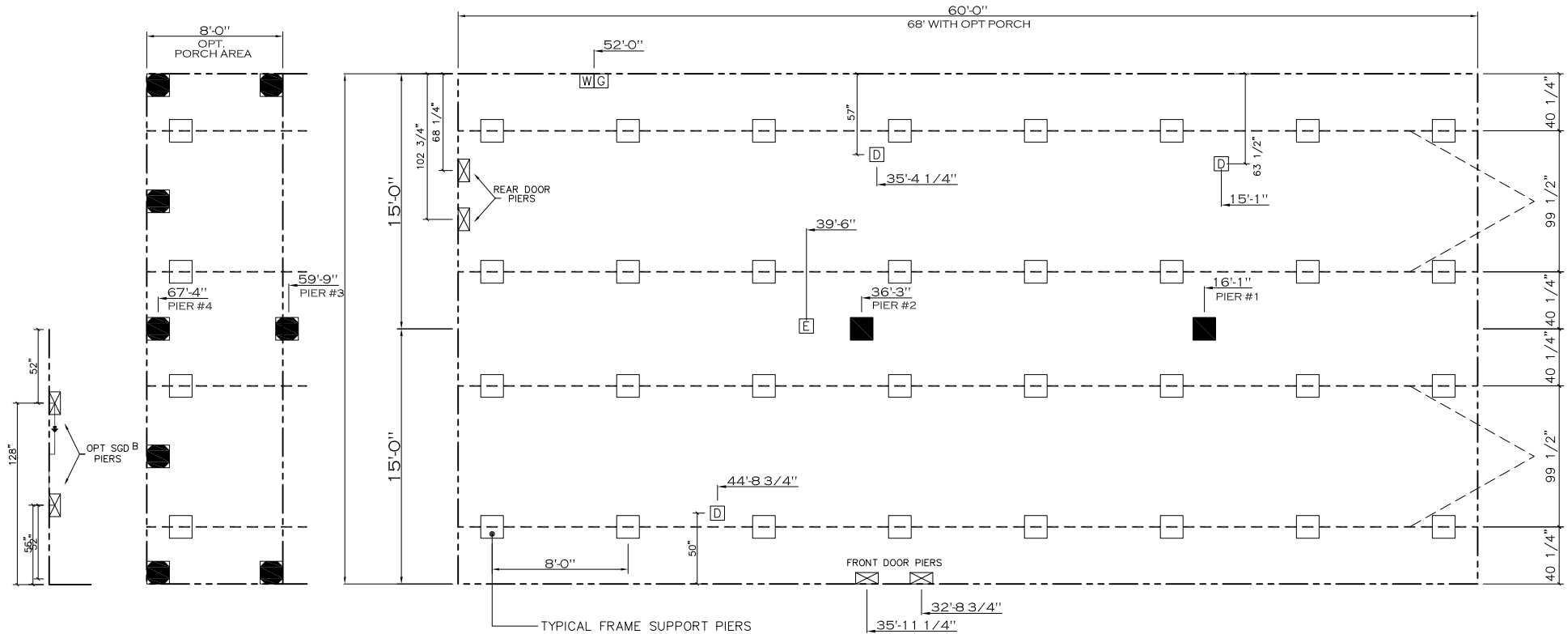


20 lb ROOF LOAD SIDEWALL OPENING PIER LOAD 32' BOX WIDTH	SIDEWALL OPENING (FT) REQUIRED PIER LOAD (LBS)					
	3	4	5	6	8	10
	1244	1413	1581	1750	2088	2425

*FOR 30 lb & 40 lb ROOF LOAD REFER TO TABLES 7b & 7c IN THE INSTALLATION MANUAL.

PERIMETER SKIRTING MATERIAL AND FOUNDATION WALL DESIGNS ARE TO ALIGN WITH THE HOME'S EXTERIOR WALL PERIMETER. AREAS AROUND PORCHES OR RECESSED ENTRIES ARE TO BE SEPARATED TO PREVENT MOISTURE FROM ACCUMULATING BENEATH THE HOME.



GENERAL NOTES:

- PIER LOADS SHOWN ARE TO BE USED TO SIZE THE FOOTINGS BELOW THE MARRIAGEWALL FOR COLUMN SUPPORT PIERS. REFER TO TABLES 6b AND 6c IN THE INSTALLATION MANUAL FOR LOAD ON FRAME PIER FOOTINGS FOR HOMES THAT DO NOT REQUIRE PERIMETER BLOCKING. REFER TO TABLES 7b AND 7c IN THE INSTALLATION MANUAL FOR LOAD ON FRAME PIER FOOTINGS THAT REQUIRE PERIMETER BLOCKING. REFER TO TABLES 10 AND 10a TO DETERMINE FOOTING SIZE FOR ALL PIERS.
- REFER TO TABLE 9 FOR PIER CONFIGURATION AND MAXIMUM ALLOWABLE HEIGHTS. CROSS REFERENCE THE PIER HEIGHT WITH THE MAXIMUM ALLOWABLE FLOOR HEIGHT LISTED IN THE FRAME TIEDOWN CHARTS (TABLE 18, 19, AND 20).
- FLOOR WIDTH SHOWN IS FOR STANDARD PRODUCT ONLY. CONTACT THE MFG PLANT FOR SPECIFICATIONS OF OPTIONS ORDERED.
- SERVICE DROP LOCATIONS IDENTIFIED ARE APPROXIMATE.
- THE MAXIMUM SPACING FOR FRAME SUPPORT PIERS FOR 8" I-BEAMS IS 8 FEET, 10" & 12" I-BEAMS ARE 10 FEET.

PIER LEGEND	
□	= SUPPORT UNDER MATING OPENING
■	= SUPPORT AT MATING COLUMN
▨	= SUPPORT UNDER MATING WALL
■	= PIER PORCH/RECESSED ENTRY
□	= PIER MAIN BEAM
▨	= PIER PERIMETER
●	= TIE-DOWN SUPPORT (QTY PER TBL M, SEE DETAIL D-6 IN FOUND. PKG)

SERVICE DROP LEGEND	
E	= ELECTRICAL DROP
W	= WATER INLET
D	= DWV PLUMBING DROP
G	= GAS INLET

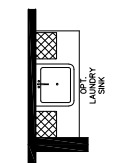
OPT. PORCH

20 psf Roof Live Load		
Column Pier #	Distance from Hitch	Pier Load (lbs)
1	16.083	4938
2	36.25	4938

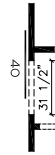
20 psf Roof Live Load		
Column Pier #	Distance from Hitch	Pier Load (lbs)
1	16.083	4938
2	36.25	4938
3	59.75	2106
4	67.333	2106

1800 SQ.FT. (STD PLAN "CONDITIONED")
2040 SQ.FT. (W/OPT. PORCH/RECESS "CONDITIONED")

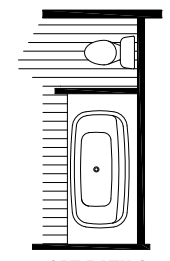
CMH MANUFACTURING Product Designer: Jessica Lambert	Model #: 9AV32603A	Drawing #:
	Date: 10/3/25	Scale: NTS
32 x 60 All American		
PIER LOADS		



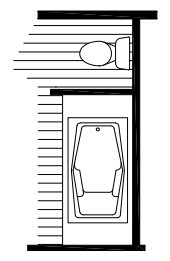
OPT UTIL SINK



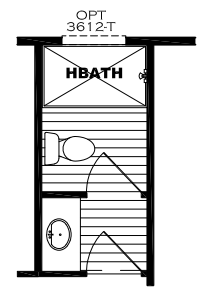
OPT BARN DOOR



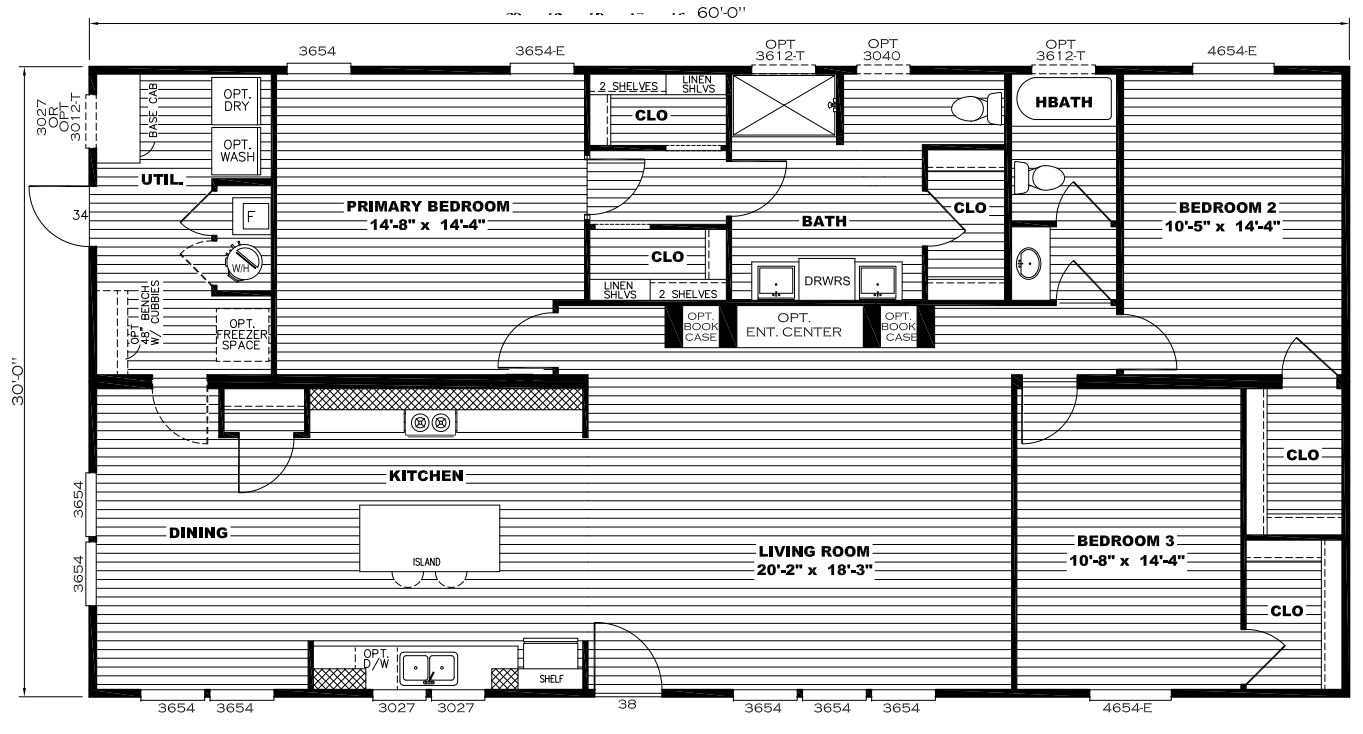
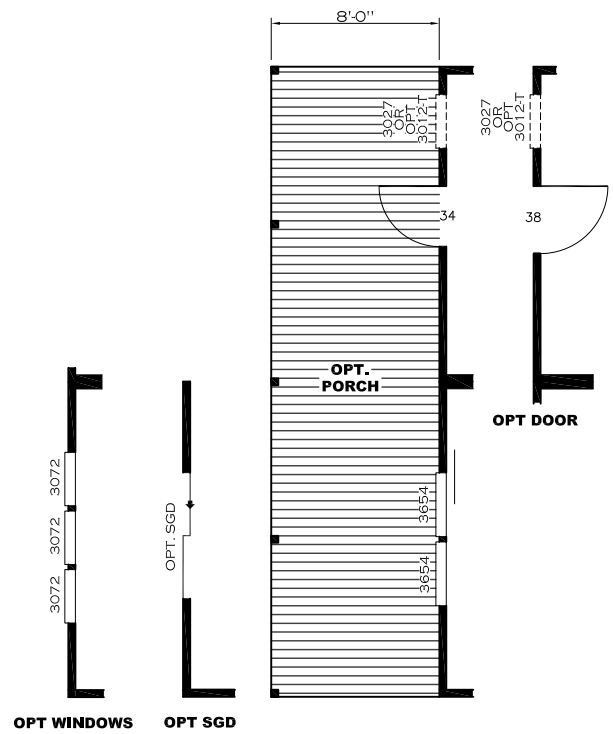
OPT BATH 1



OPT BATH 2



OPT HBATH

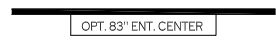


OPT WINDOWS

CAN'T INSTALL BOTH 3072 WINDOW
OPTS IN DINING ON FRONT & END WALLS
NEED AT LEAST 1 3654 WINDOW FOR
LIGHT & VENT

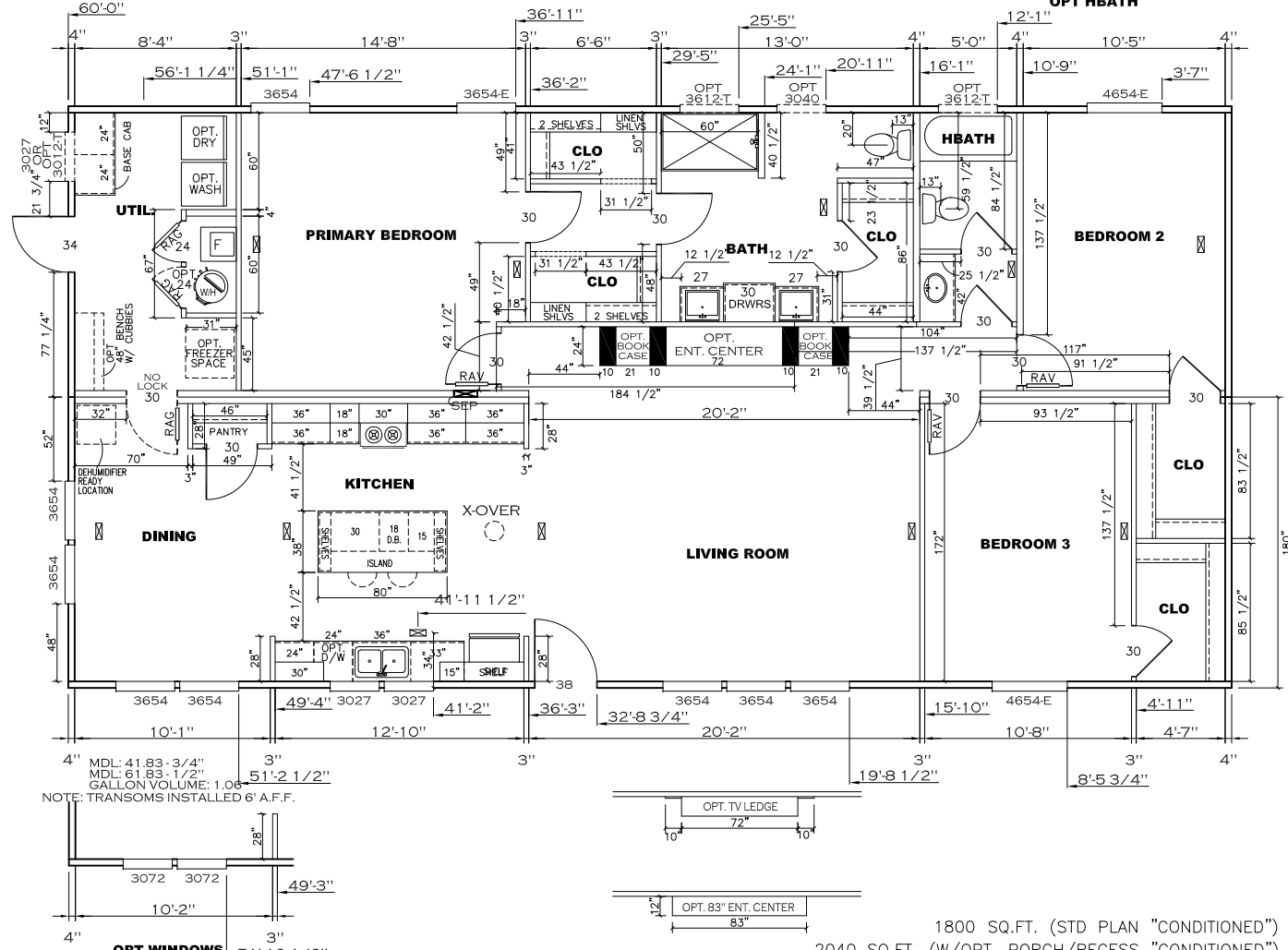
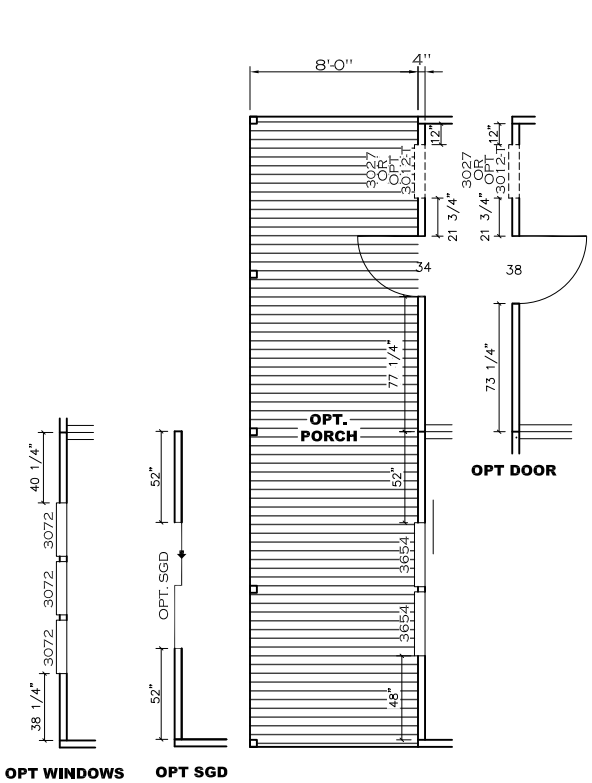
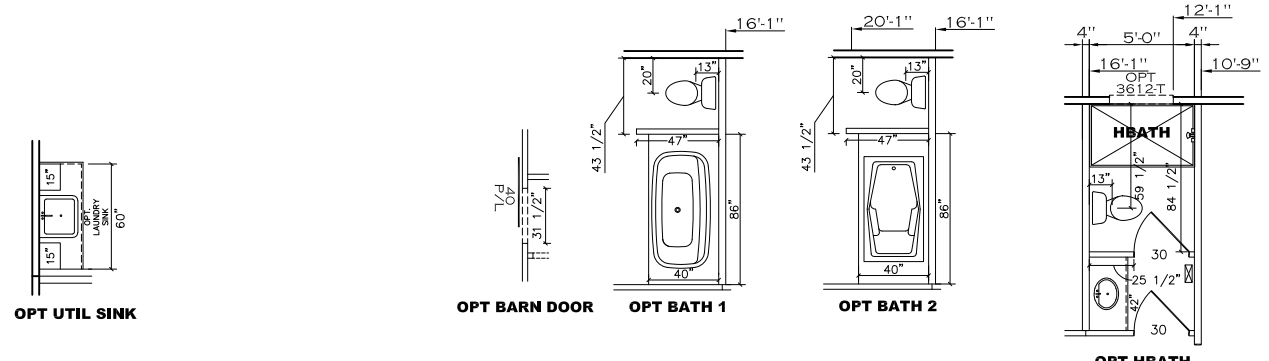


OPT. TV LEDGE



OPT. 83" ENT. CENTER

32 x 60 All American
Model #: 5AV32603A
Drawing #:
37M215



MDL: 41.83 - 3/4"
 MDL: 61.83 - 1/2"
 GALLON VOLUME: 1.06
 NOTE: TRANSOMS INSTALLED 6" A.F.F.

OPT WINDOWS 51'-10 1/2"
 CAN'T INSTALL BOTH 3072 WINDOW
 OPTS IN DINING ON FRONT & END WALLS
 NEED AT LEAST 1 3654 WINDOW FOR
 LIGHT & VENT

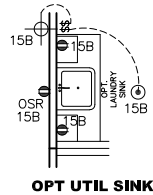
1800 SQ.FT. (STD PLAN "CONDITIONED")
 2040 SQ.FT. (W/OPT. PORCH/RECESS "CONDITIONED")

CMH MANUFACTURING	Model #: 5AV32603A	Drawing #:
	Date: 10/3/25	Scale: NTS
Product Designer: Jessica Lambert	37M215	
FLOOR PLAN		

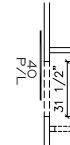
NOTES:

1. ALL CIRCUITS SHOWN ARE FOR REFERENCE AND MAY BE CHANGED BASED ON OPTIONAL COMPONENTS INSTALLED IN THE HOME.
2. REFER TO DAPIA MANUAL FOR SYMBOL CHART.
3. EITHER LIGHT OR RECEPTACLE MUST CONNECT TO SWITCH.
4. EF-1= 50 CFM EXHAUST FAN REQUIRED FOR THERMAL ZONE III THERMAL ZONES I & II MAY USE FAN OR WINDOW W/1.5 SQ. FT. OPENABLE GLASS.
5. EF-2= 50 CFM EXHAUST FAN REQUIRED THERMAL ZONE I, II, AND III.
6. EF-3= 100 CFM RANGE EXHAUST FAN, SWITCH AT HOOD.
7. EF-4= WHOLE HOUSE VENTILATION REQUIREMENTS PER DAPIA MANUAL.
8. REFER TO DAPIA MANUAL OR THE MFG. INSTALLATION INSTRUCTIONS FOR PROPER WIRE SIZE AND BREAKER SIZE FOR SPECIFIC APPLIANCE AND MODEL BEING INSTALLED.
9. ALL SMOKE ALARMS TO BE LOCATED ON THE CEILING.
10. CARBON MONOXIDE ALARMS ARE ONLY REQUIRED WHEN HOME HAS EITHER FUEL BURNING APPLIANCES, IS GARAGE READY OR IS BASEMENT READY. REFERENCE DAPIA MANUAL FOR ADDITIONAL INFORMATION.
11. DIMENSIONS SHOWN ON PRINT ARE APPROXIMATE AND TO BE USED ONLY AS A GUIDELINE.

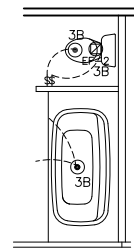
APPROVED **HWC** **APPROVED**
 OCT 13 2025
 REVISED
 FP-32-3143
 Federal Manufactured
 Home Construction
 And Safety Standards



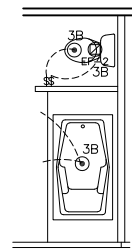
OPT UTIL SINK



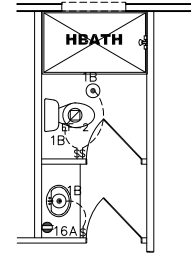
OPT BARN DOOR



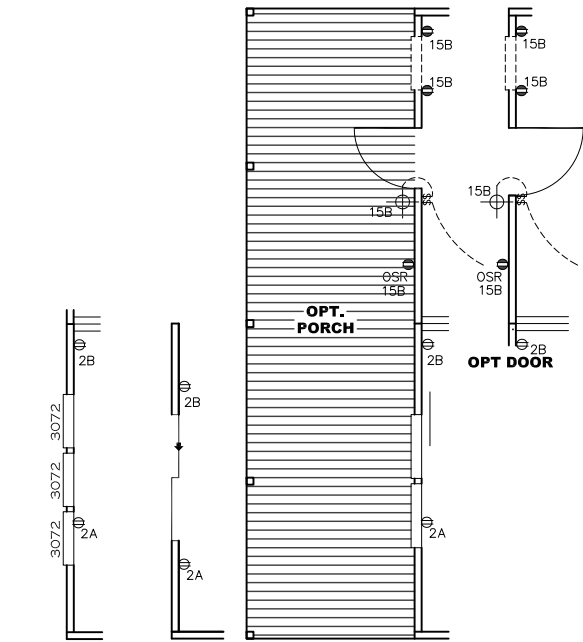
OPT BATH 1



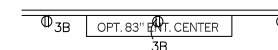
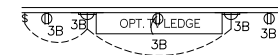
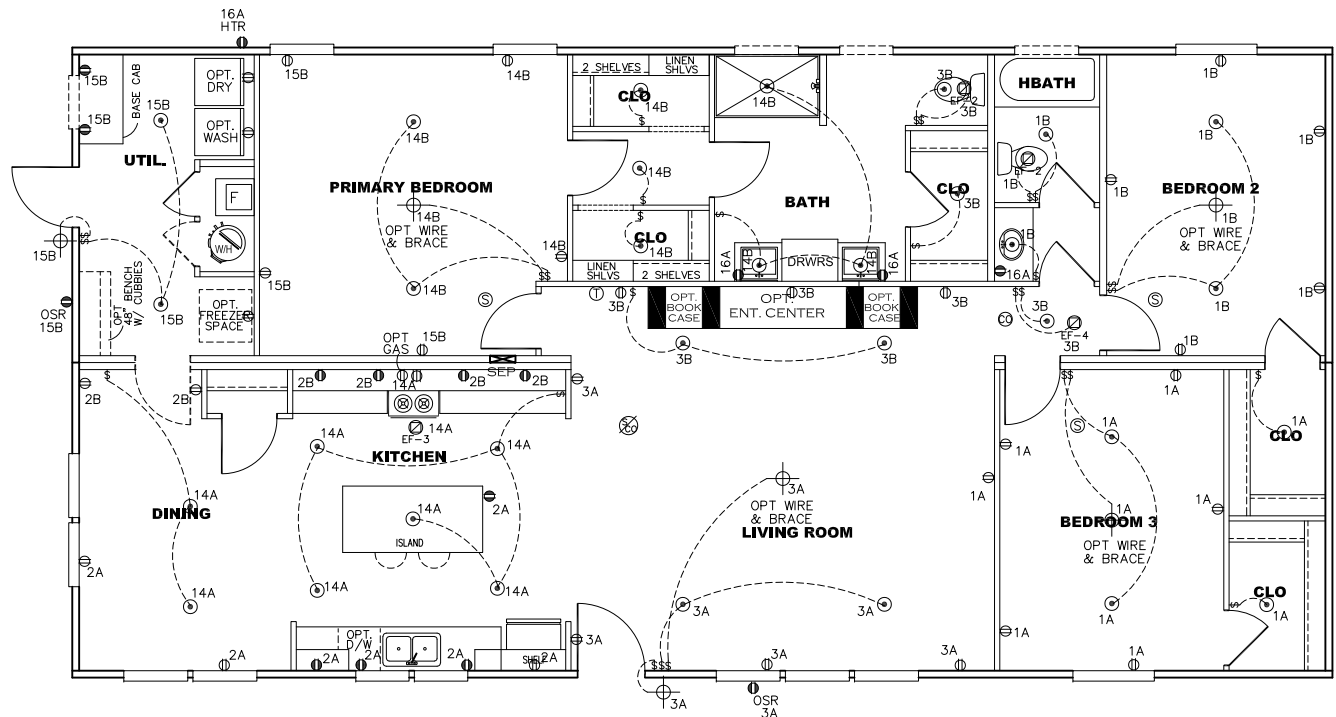
OPT BATH 2



OPT HBATH



OPT WINDOWS OPT SLD



1800 SQ.FT. (STD PLAN "CONDITIONED")
 2040 SQ.FT. (W/OPT. PORCH/RECESS "CONDITIONED")

CIRCUIT	CIRCUIT #	WIRE	BREAKER	CIRCUIT	CIRCUIT #	WIRE	BREAKER	CIRCUIT	CIRCUIT #	WIRE	BREAKER
LIGHT/RECEP	1A,B,3A,B,14A,B,15B	14-2	15-SP	WATER HEATER	4A,6B	SEE NOTE #8		BATHROOM	16A	12-2	20-SP
KITCHEN	2A,2B	12-2	20-SP	RANGE	5B,7A	SEE NOTE #8		OPT G/DISP	9B	SEE NOTE #8	
WASHER	12A	12-2	20-SP	FURNACE	6A,8A,B,10A,B	SEE NOTE #8		OPT SPA/WP/JAC	11A,B	SEE NOTE #8	
DRYER	5A,7B	SEE NOTE #8		OPT D/WASH	9A	SEE NOTE #8		FREEZER	13A	SEE NOTE #8	
				SMOKE ALARM/CO	4B	SEE NOTE #8					

CMH MANUFACTURING	Model #: SAV32G03A	Drawing #:
	Date: 10/3/25	Scale: NTS
Product Designer: Jessica Lambert		32 x 60 All American
ELECTRICAL PLAN-06		

APPROVED

HWC

APPROVED

OCT 13 2025

REVISED

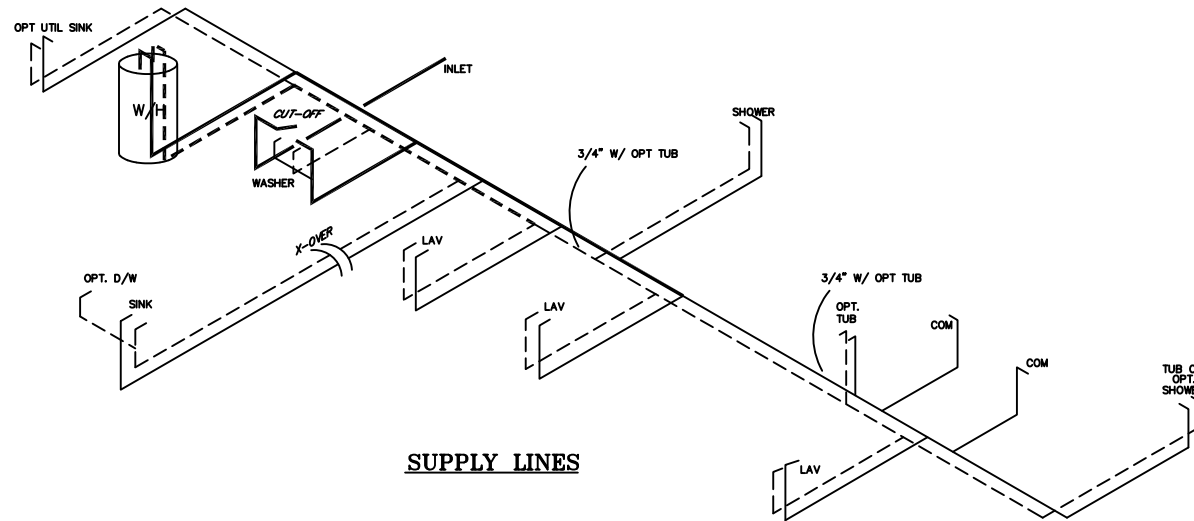
FP-32-3143

Federal Manufactured
Home Construction
And Safety Standards

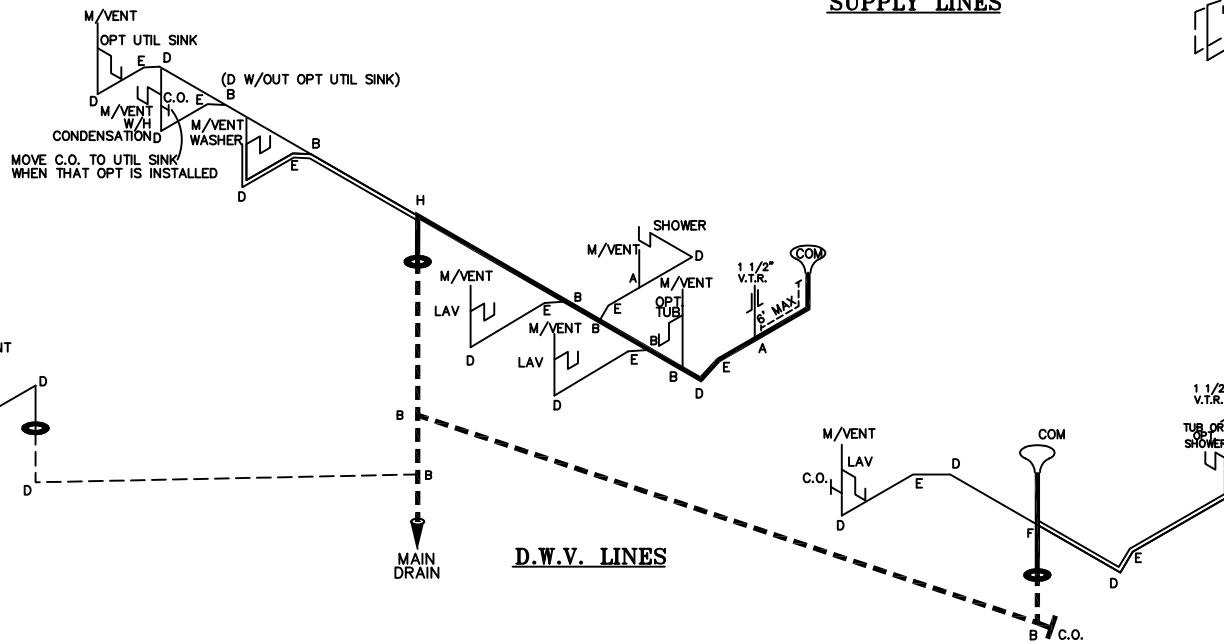
6

NOTE:
DASHED LINES INDICATES HOT WATER
SOLID LINES INDICATES COLD WATER

===== = 3/4"
===== = 1/2"



SUPPLY LINES



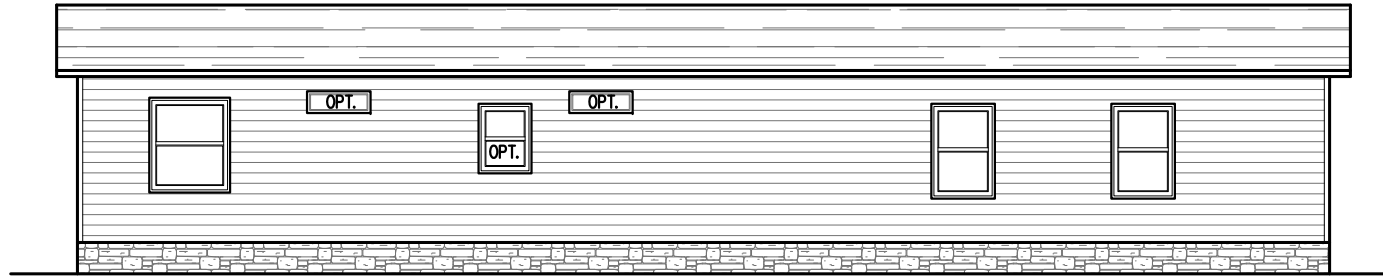
D.W.V. LINES

LEGEND	
A	SHORT TURN T-Y
B	LONG TURN T-Y
C	1/4 BEND
D	LONG SWEEP 1/4 BEND
E	45 ELL
F	DBL. SANITARY TEE
G	4x3 CLOSET ELL
H	DOUBLE ELL
I	22 1/2" ELL
J	45° Y
K	LONG TURN STREET ELBOW
L	45 FTG ELL

DWV LINE SIZE CHART	
=====	= 3"
=====	= 2"
=====	= 1 1/2"

1800 SQ.FT. (STD PLAN "CONDITIONED")
2040 SQ.FT. (W/OPT. PORCH/RECESS "CONDITIONED")

CMH MANUFACTURING	Model #: 5AV32G03A	Drawing #:
	Date: 10/3/25	Scale: NTS
Product Designer: Jessica Lambert		32 x 60 All American
D.W.V. and Supply Lines		



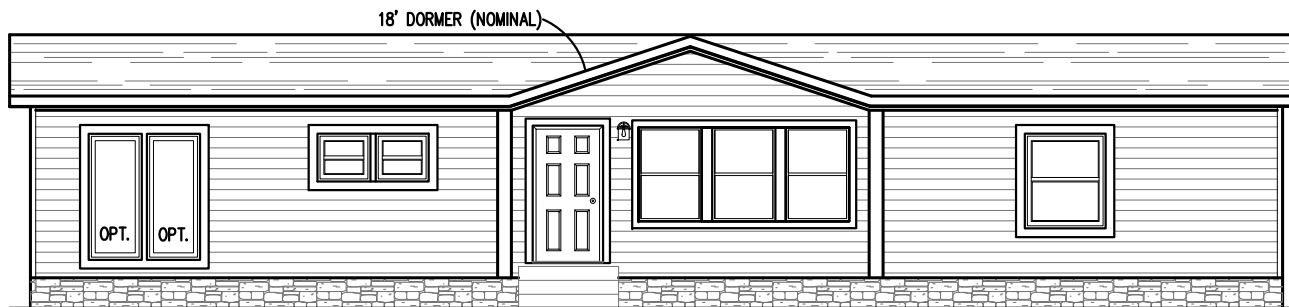
REAR ELEVATION



LEFT ELEVATION



RIGHT ELEVATION



FRONT ELEVATION

1800 SQ.FT. (STD PLAN "CONDITIONED")		
2040 SQ.FT. (W/OPT. PORCH/RECESS "CONDITIONED")		
CMH MANUFACTURING	Model #: SAV32G03A Date: 11/02/2022	Scale: NTS Drawing #: 37M215
Product Designer: J PIPES	32 x 60 Factory Direct	
ELEVATION		

APPROVED

HWC

OCT 13 2025
REVISED

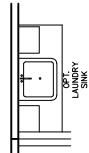
FP-32-3143

Federal Manufactured
Home Construction
And Safety Standards

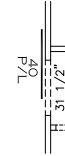
6

APPROVED

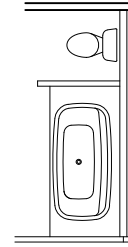
OPT UTIL SINK



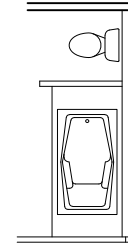
OPT BARN DOOR



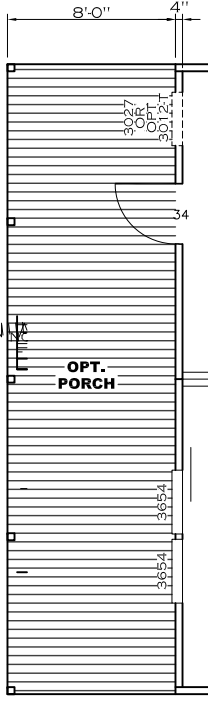
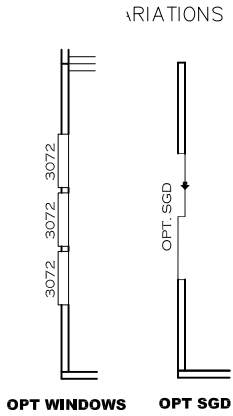
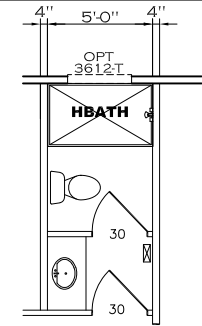
OPT BATH 1



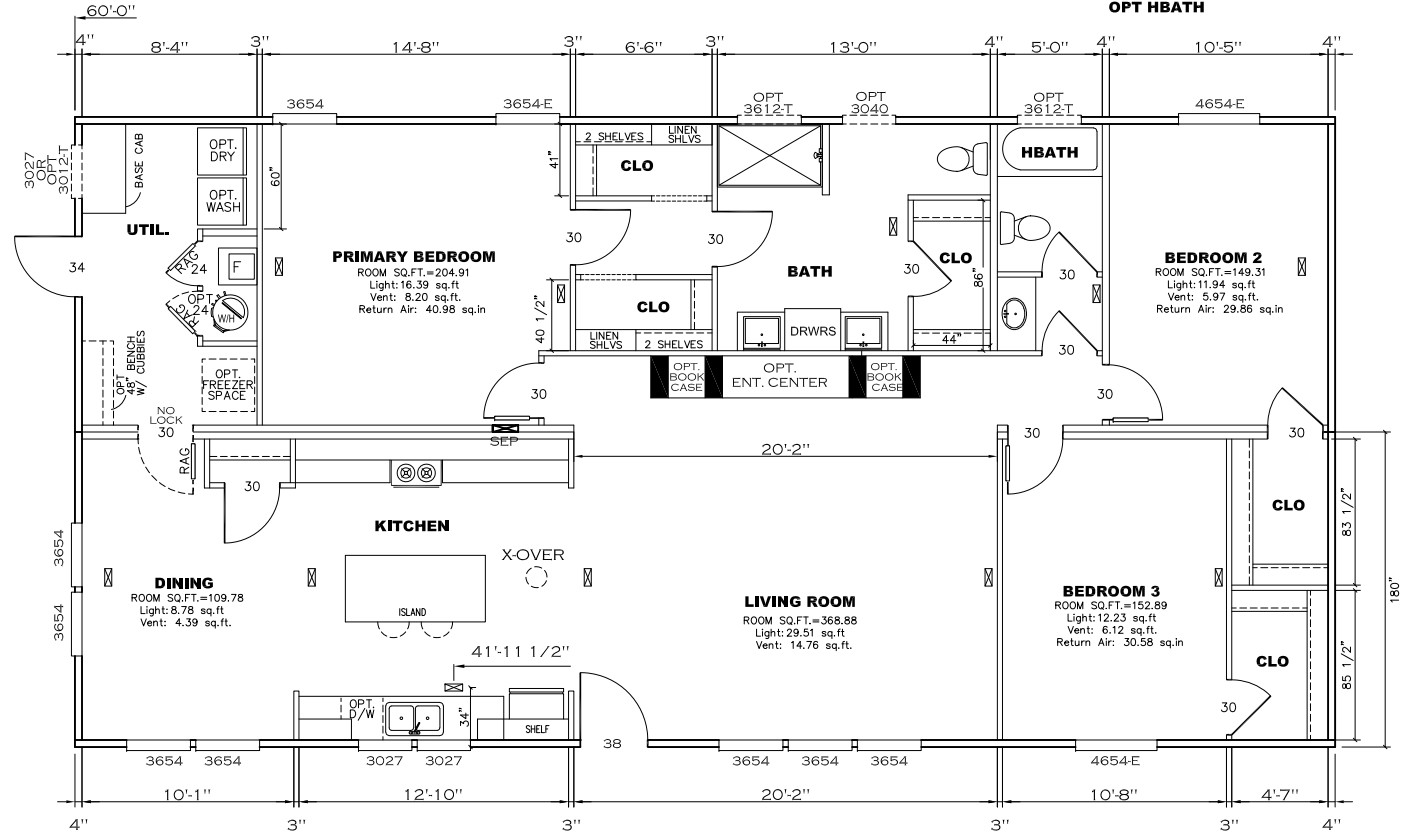
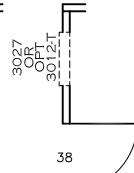
OPT BATH 2



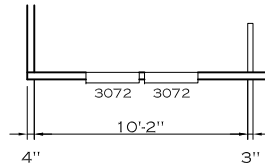
OPT HBATH



OPT DOOR



NOTE: TRANSOMS INSTALLED 6" A.F.F.



OPT WINDOWS

CANT INSTALL BOTH 3072 WINDOW
OPTS IN DINING ON FRONT & END WALLS
NEED AT LEAST 1 3654 WINDOW FOR
LIGHT & VENT

OPT. 83" ENT. CENTER

OPT. TV LEDGE

1800 SQ.FT. (STD PLAN "CONDITIONED")
2040 SQ.FT. (W/OPT. PORCH/RECESS "CONDITIONED")

CMH MANUFACTURING	Model #: SAV32603A	Drawing #:
	Date: 10/3/25	Scale: NTS
Product Designer: Jessica Lambert	37M215	
FLOOR PLAN		

APPROVED



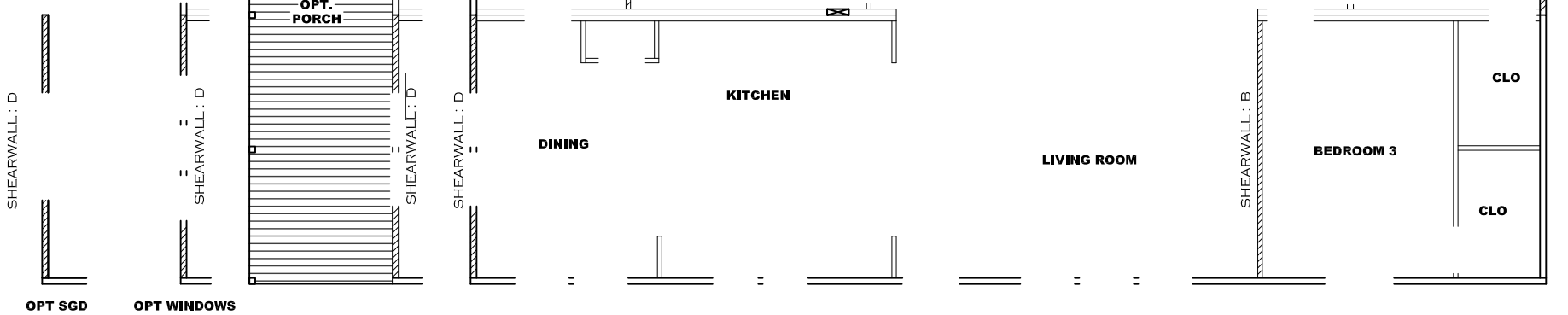
DEC 15 2025

FP-32-3143

Federal Manufactured Home Construction And Safety Standards

APPROVED

6



Model # 37M215
 Box Width = 180" Double wide Minimum Joist Spacing 16"
 Box Length = 60 ft. 99.5" 12" MIN. IBEAM No Clerestory
 No Skylights No Origami Dormer
 No Porches No Sunken Floor
 Joist Size = #2 sp 2x6 Lags 9Mx3" No Parapet Roof

Version R14.02

Wind Zone 1 Standard Roof		7/16" Rated Sheathing and Ceiling Board with 15 ga staple @ 6/12 (286,315) Chords; 7. 2x4 SPF #3 Top Plate spliced w/2x4 MCP & 2x3 SPF Rail spliced w/ 2x4 MCP					96 inch sidewall
Diaphragm Construction: Block Dist. X=0'							
Shearwall	Dist./ Hitch	Length	PLF	# of Joists	Lags	Notes	SW1/SW2
A	0'	136"	162	2	2/1	*	
D	60'	100"	250	2	2/2	Split Shearwall	52/48
Wind Zone 2 Standard Roof		7/16" Rated Sheathing and Ceiling Board with 15 ga staple @ 6/12 (286,315) Chords; 7. 2x4 SPF #3 Top Plate spliced w/2x4 MCP & 2x3 SPF Rail spliced w/ 2x4 MCP					96 inch sidewall
Diaphragm Construction: Block Dist. X=0'							
Shearwall	Dist./ Hitch	Length	PLF	# of Joists	Lags	Notes	SW1/SW2
A	0'	104"	162	2	1/1	*	
B	15.96'	140"	350	2	4/1		
C	51.21'	Full	250	2	2/2		
D	60'	100"	162	2	1/1	Split Shearwall	52/48
Wind Zone 3 Standard Roof		7/16" Rated Sheathing and Ceiling Board with 15 ga staple @ 6/12 (286,315) Chords; 7. 2x4 SPF #3 Top Plate spliced w/2x4 MCP & 2x3 SPF Rail spliced w/ 2x4 MCP					96 inch sidewall
Diaphragm Construction: Block Dist. X=0'							
Shearwall	Dist./ Hitch	Length	PLF	# of Joists	Lags	Notes	SW1/SW2
A	0'	112"	162	2	2/1	*	
B	15.96'	Full	350	2	2/2		
C	51.21'	144"	350	2	4/1		
D	60'	100"	162	2	1/1	Split Shearwall	52/48

* Denotes that indicated shearwall is over full depth/width front steel chassis header.

Model # 37M215-OPT 3RD WINDOW
 Box Width = 180" Double wide Minimum Joist Spacing 16"
 Box Length = 60 ft. 99.5" 12" MIN. IBEAM No Clerestory
 No Skylights No Origami Dormer
 No Porches No Sunken Floor
 Joist Size = #2 sp 2x6 Lags 9Mx3" No Parapet Roof

Version R14.02

Wind Zone 1 Standard Roof		7/16" Rated Sheathing and Ceiling Board with 15 ga staple @ 6/12 (286,315) Chords; 7. 2x4 SPF #3 Top Plate spliced w/2x4 MCP & 2x3 SPF Rail spliced w/ 2x4 MCP					96 inch sidewall
Diaphragm Construction: Block Dist. X=0'							
Shearwall	Dist./ Hitch	Length	PLF	# of Joists	Lags	Notes	SW1/SW2
A	0'	136"	162	2	2/1	*	
D	60'	78.5"	350	3	2/2	Split Shearwall	40.25/38.25
Wind Zone 2 Standard Roof		7/16" Rated Sheathing and Ceiling Board with 15 ga staple @ 6/12 (286,315) Chords; 7. 2x4 SPF #3 Top Plate spliced w/2x4 MCP & 2x3 SPF Rail spliced w/ 2x4 MCP					96 inch sidewall
Diaphragm Construction: Block Dist. X=0'							
Shearwall	Dist./ Hitch	Length	PLF	# of Joists	Lags	Notes	SW1/SW2
A	0'	104"	162	2	1/1	*	
B	15.96'	140"	350	2	4/1		
C	51.21'	Full	250	2	2/2		
D	60'	78.5"	162	2	1/1	Split Shearwall	40.25/38.25
Wind Zone 3 Standard Roof		7/16" Rated Sheathing and Ceiling Board with 15 ga staple @ 6/12 (286,315) Chords; 7. 2x4 SPF #3 Top Plate spliced w/2x4 MCP & 2x3 SPF Rail spliced w/ 2x4 MCP					96 inch sidewall
Diaphragm Construction: Block Dist. X=0'							
Shearwall	Dist./ Hitch	Length	PLF	# of Joists	Lags	Notes	SW1/SW2
A	0'	112"	162	2	2/1	*	
B	15.96'	Full	350	2	2/2		
C	51.21'	144"	350	2	4/1		
D	60'	78.5"	162	2	1/1	Split Shearwall	40.25/38.25

* Denotes that indicated shearwall is over full depth/width front steel chassis header.

Model # 37M215-OPT SGD
 Box Width = 180" Double wide Minimum Joist Spacing 16"
 Box Length = 60 ft. 99.5" 12" MIN. IBEAM No Clerestory
 No Skylights No Origami Dormer
 No Porches No Sunken Floor
 Joist Size = #2 sp 2x6 Lags 9Mx3" No Parapet Roof

Version R14.02

Wind Zone 1 Standard Roof		7/16" Rated Sheathing and Ceiling Board with 15 ga staple @ 6/12 (286,315) Chords; 7. 2x4 SPF #3 Top Plate spliced w/2x4 MCP & 2x3 SPF Rail spliced w/ 2x4 MCP					96 inch sidewall
Diaphragm Construction: Block Dist. X=0'							
Shearwall	Dist./ Hitch	Length	PLF	# of Joists	Lags	Notes	SW1/SW2
A	0'	136"	162	2	2/1	*	
D	60'	104"	250	2	2/2	Split Shearwall	52/52
Wind Zone 2 Standard Roof		7/16" Rated Sheathing and Ceiling Board with 15 ga staple @ 6/12 (286,315) Chords; 7. 2x4 SPF #3 Top Plate spliced w/2x4 MCP & 2x3 SPF Rail spliced w/ 2x4 MCP					96 inch sidewall
Diaphragm Construction: Block Dist. X=0'							
Shearwall	Dist./ Hitch	Length	PLF	# of Joists	Lags	Notes	SW1/SW2
A	0'	104"	162	2	1/1	*	
B	15.96'	140"	350	2	4/1		
C	51.21'	Full	250	2	2/2		
D	60'	104"	162	2	1/1	Split Shearwall	52/52
Wind Zone 3 Standard Roof		7/16" Rated Sheathing and Ceiling Board with 15 ga staple @ 6/12 (286,315) Chords; 7. 2x4 SPF #3 Top Plate spliced w/2x4 MCP & 2x3 SPF Rail spliced w/ 2x4 MCP					96 inch sidewall
Diaphragm Construction: Block Dist. X=0'							
Shearwall	Dist./ Hitch	Length	PLF	# of Joists	Lags	Notes	SW1/SW2
A	0'	112"	162	2	2/1	*	
B	15.96'	Full	350	2	2/2		
C	51.21'	144"	350	2	4/1		
D	60'	104"	162	2	1/1	Split Shearwall	52/52

* Denotes that indicated shearwall is over full depth/width front steel chassis header.

37M215-SW-O-N

1800 SQ.FT. (STD PLAN "CONDITIONED")
 2040 SQ.FT. (W/OPT. PORCH/RECESS "CONDITIONED")

CMH MANUFACTURING Product Designer: Jessica Lambert	Model #: SAV32603A Date: 12/10/25 Scale: NTS	Drawing #: 37M215
	32 x 60 All American	
SHEARWALL PAGE		O-N