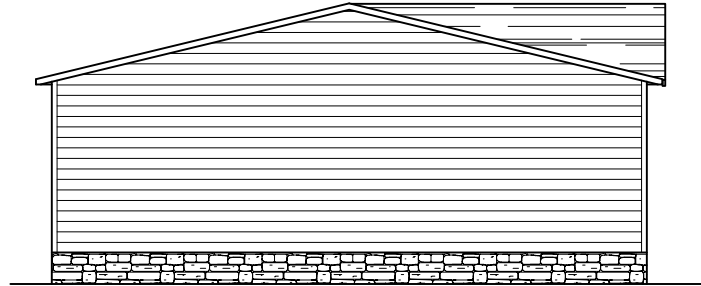


REAR ELEVATION



LEFT SIDE ELEVATION



RIGHT SIDE ELEVATION

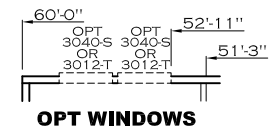


FRONT ELEVATION

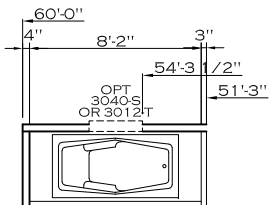
1640 SQ.FT. (STD PLAN "CONDITIONED")  
 N/A SQ.FT. (W/OPT. PORCH/RECESS "CONDITIONED")

<b>CMH</b> MANUFACTURING	Model #: 5AV28603A	Drawing #:
	Date: 2/18/22	Scale: N.T.S.
Product Designer: E HARDWICK	28 X 60 Stella	
<b>ELEVATION</b>		

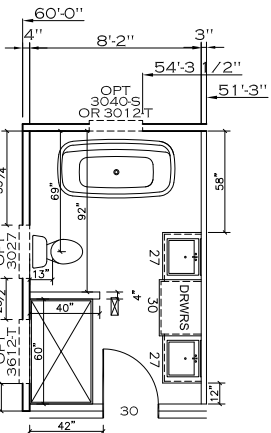




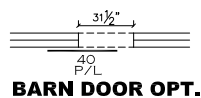
**OPT WINDOWS**



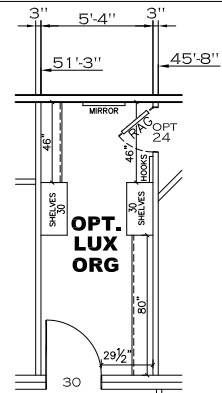
**BATH OPT. 2**



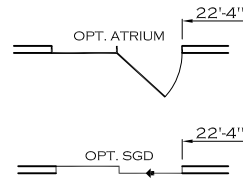
**BATH OPT.**



**BARN DOOR OPT.**

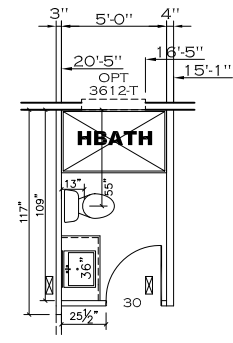


**OPT. LUX ORG**

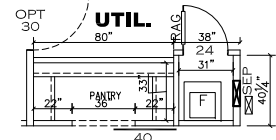


**OPT. ATRIUM**

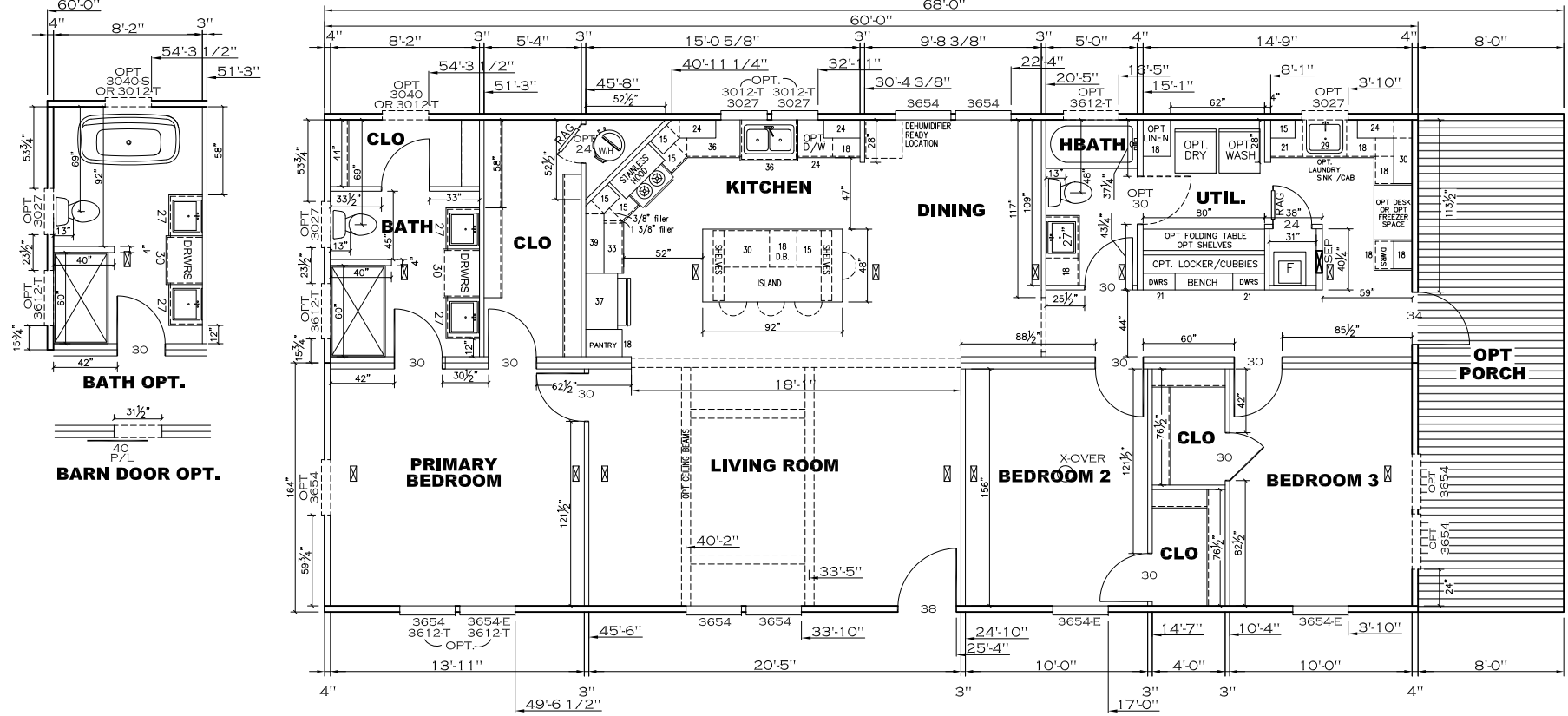
**OPT. SGD**



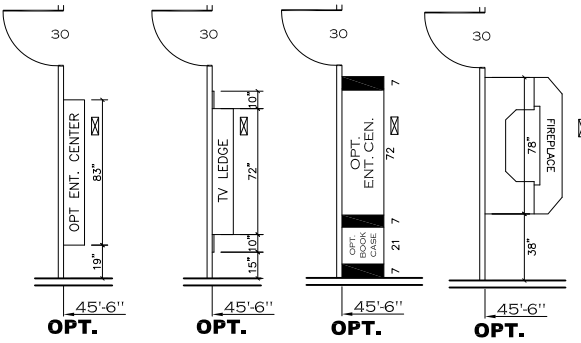
**SHOWER OPT.**



**PANTRY OPT.**



NOTE: TRANSOMS INSTALLED 6" A.F.F.  
 MDL: 41.92 - 3/4"  
 MDL: 26.00 - 1/2"  
 GALLON VOLUME: 1.01



**OPT.**

**OPT.**

**OPT.**

**OPT.**

1640 SQ.FT. (STD PLAN "CONDITIONED")  
 N/A SQ.FT. (W/OPT. PORCH/RECESS "CONDITIONED")

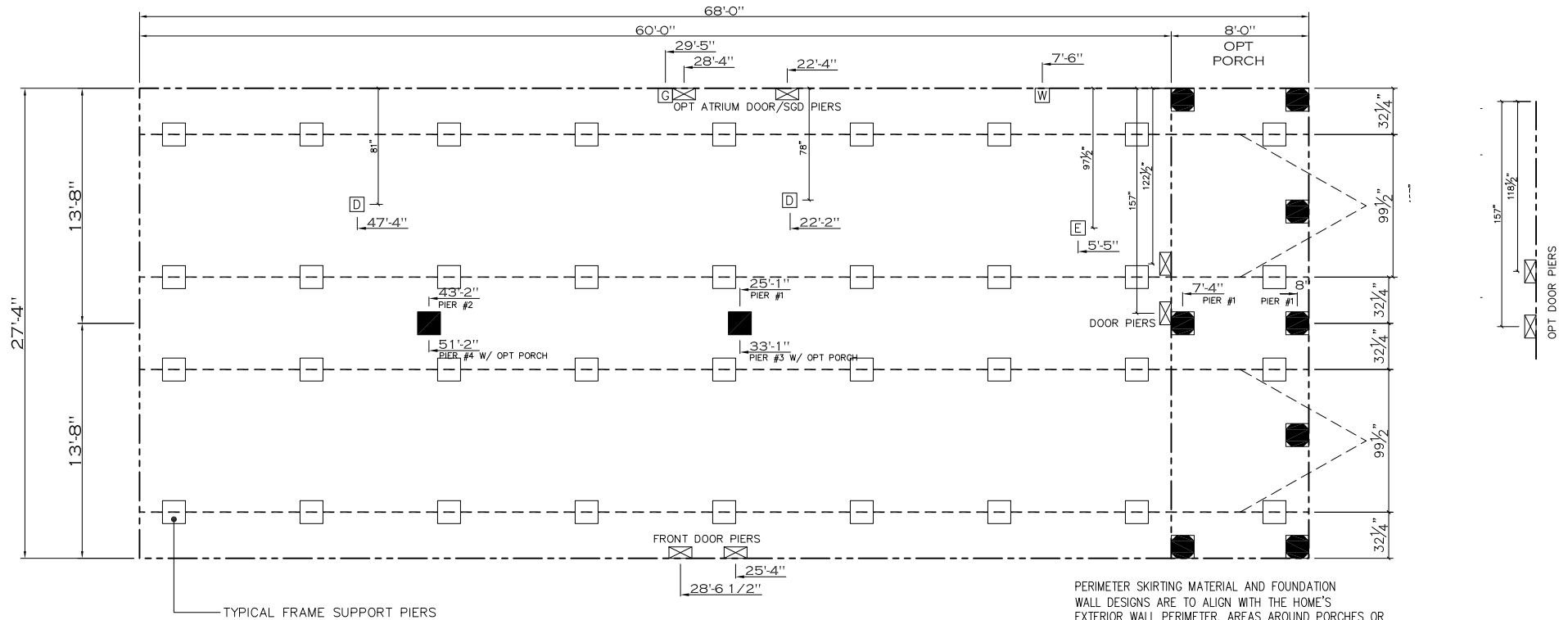
	Model #: SAV28603A	Drawing #:
	Date: 2/18/22	Scale: N.T.S.

Product Designer: E HARDWICK  
 28 X 60 Stella

**FLOOR PLAN**

20 lb ROOF LOAD SIDEWALL OPENING PIER LOAD 28' BOX WIDTH	SIDEWALL OPENING (FT)					
	REQUIRED PIER LOAD (LBS)					
	3	4	5	6	8	10
	1175	1330	1485	1640	1950	2260

\*FOR 30 lb & 40 lb ROOF LOAD REFER TO TABLES 7b & 7c IN THE INSTALLATION MANUAL.



PERIMETER SKIRTING MATERIAL AND FOUNDATION WALL DESIGNS ARE TO ALIGN WITH THE HOME'S EXTERIOR WALL PERIMETER. AREAS AROUND PORCHES OR RECESSED ENTRIES ARE TO BE SEPARATED TO PREVENT MOISTURE FROM ACCUMULATING BENEATH THE HOME.

**GENERAL NOTES:**

- PIER LOADS SHOWN ARE TO BE USED TO SIZE THE FOOTINGS BELOW THE MARRIAGEWALL FOR COLUMN SUPPORT PIERS. REFER TO TABLES 6b AND 6c IN THE INSTALLATION MANUAL FOR LOAD ON FRAME PIER FOOTINGS FOR HOMES THAT DO NOT REQUIRE PERIMETER BLOCKING. REFER TO TABLES 7b AND 7c IN THE INSTALLATION MANUAL FOR LOAD ON FRAME PIER FOOTINGS THAT REQUIRE PERIMETER BLOCKING. REFER TO TABLES 10 AND 10a TO DETERMINE FOOTING SIZE FOR ALL PIERS.
- REFER TO TABLE 9 FOR PIER CONFIGURATION AND MAXIMUM ALLOWABLE HEIGHTS. CROSS REFERENCE THE PIER HEIGHT WITH THE MAXIMUM ALLOWABLE FLOOR HEIGHT LISTED IN THE FRAME TIEDOWN CHARTS (TABLE 18, 19, AND 20).
- FLOOR WIDTH SHOWN IS FOR STANDARD PRODUCT ONLY. CONTACT THE MFG PLANT FOR SPECIFICATIONS OF OPTIONS ORDERED.
- SERVICE DROP LOCATIONS IDENTIFIED ARE APPROXIMATE.
- THE MAXIMUM SPACING FOR FRAME SUPPORT PIERS FOR 8" I-BEAMS IS 8 FEET, 10" & 12" I-BEAMS ARE 10 FEET.

PIER LEGEND	
□	= SUPPORT UNDER MATING OPENING
■	= SUPPORT AT MATING COLUMN
▨	= SUPPORT UNDER MATING WALL
■	= PIER PORCH/RECESSED ENTRY
□	= PIER MAIN BEAM
▬	= PIER PERIMETER
●	= TIE-DOWN SUPPORT (QTY PER TBL M, SEE DETAIL D-6 IN FOUND. PKG.)

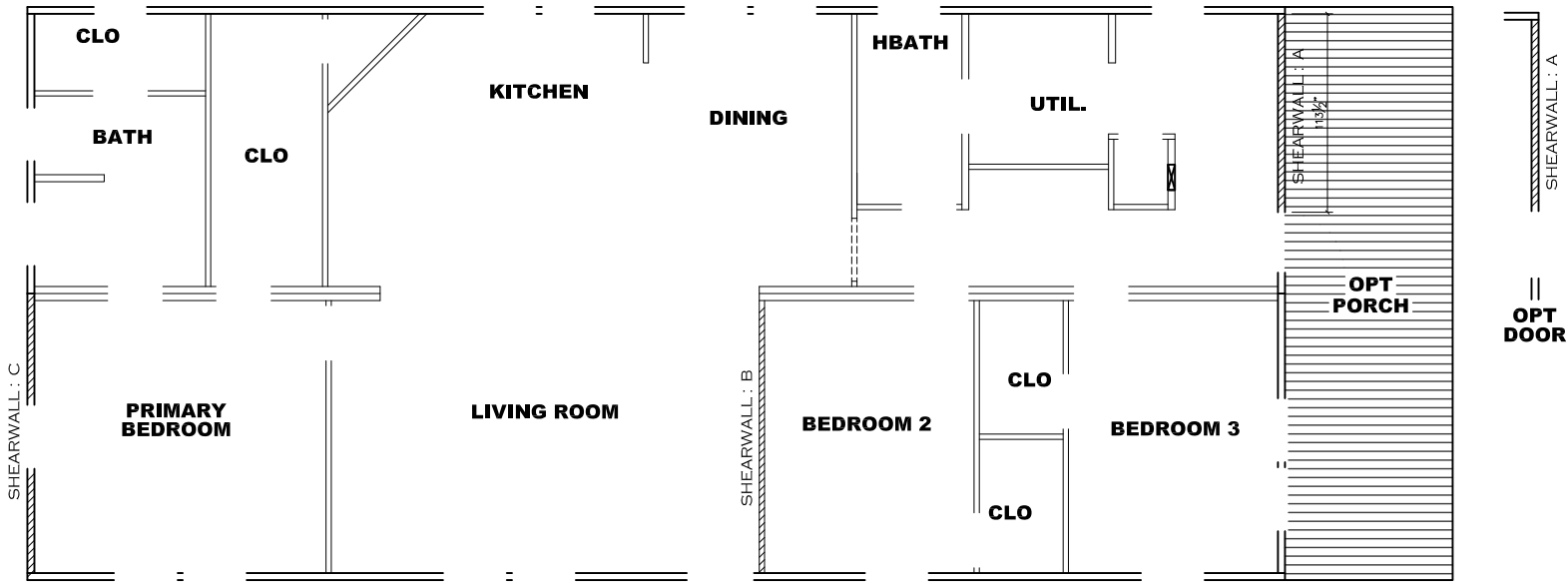
SERVICE DROP LEGEND	
E	= ELECTRICAL DROP
W	= WATER INLET
D	= DWV PLUMBING DROP
G	= GAS INLET

20 psf Roof Live Load		
Column Pier #	Distance from Hitch	Pier Load (lbs)
1	25.083	4107
2	43.167	4107

OPT PORCH		
20 psf Roof Live Load		
Column Pier #	Distance from Hitch	Pier Load (lbs)
1	0.667	1767
2	7.333	1767
3	33.083	4107
4	51.167	4107

1640 SQ.FT. (STD PLAN "CONDITIONED")  
N/A SQ.FT. (W/OPT. PORCH/RECESS "CONDITIONED")

	Model #: SAV28603A	Drawing #:
	Date: 2/18/22	Scale: N.T.S.
Product Designer: E HARDWICK		
28 X 60 Stella		
<b>PIER LOADS</b>		



**Model # 37M208** Minimum Joist Spacing 16"
   
 Box Width = 164" Double wide No Offset Box
   
 Box Length = 60 ft. 99.5" 12" MIN.IBEAM No Clerestory
   
 No Skylights No Origanl Dormer
   
 No Porches No Sunken Floor
   
 Joist Size = #2 sp 2x6 Lags 9Mx3" No Parapet Roof

**Version R14.00**

<b>Wind Zone 1 Standard Roof</b>		7/16" Rated Sheathing and Ceiling Board with 15 ga staple @ 6/12 (286,315) Chords: 2x4 SPF #3 Top Plate spliced w/2x4 MCP & 2x3 SPF Rail spliced w/ 2x4 MCP					96 inch sidewall
Diaphragm Construction: Block Dist. X=0'							
Shearwall	Dist./ Hitch	Length	PLF	# of Joists	Lags	Notes	SW1/SW2
A	0'	104"	350	2	3/2	*	
C	60'	123.5"	350	3	3/3	Split Shearwall	59.75/63.75
<b>Wind Zone 2 Standard Roof</b>		7/16" Rated Sheathing and Ceiling Board with 15 ga staple @ 6/12 (286,315) Chords: 2x4 SPF #3 Top Plate spliced w/2x4 MCP & 2x3 SPF Rail spliced w/ 2x4 MCP					96 inch sidewall
Diaphragm Construction: Block Dist. X=0'							
Shearwall	Dist./ Hitch	Length	PLF	# of Joists	Lags	Notes	SW1/SW2
A	0'	104"	350	2	3/2	*	
B	24.96'	132"	430	2	4/1		
C	60'	123.5"	350	3	3/3	Split Shearwall	59.75/63.75
<b>Wind Zone 3 Standard Roof</b>		7/16" Rated Sheathing and Ceiling Board with 15 ga staple @ 6/12 (286,315) Chords: 2x4 SPF #3 Top Plate spliced w/2x4 MCP & 2x3 SPF Rail spliced w/ 2x4 MCP					96 inch sidewall
Diaphragm Construction: Block Dist. X=0'							
Shearwall	Dist./ Hitch	Length	PLF	# of Joists	Lags	Notes	SW1/SW2
A	0'	104"	350	2	3/2	*	
B	24.96'	Full	520	2	4/4		
C	60'	123.5"	350	3	3/3	Split Shearwall	59.75/63.75
<b>Wind Zone 1 Standard Roof</b>		7/16" Rated Sheathing and Ceiling Board with 15 ga staple @ 6/12 (286,315) Chords: 2x4 SPF #3 Top Plate spliced w/2x4 MCP & 2x3 SPF Rail spliced w/ 2x4 MCP					96 inch sidewall
Diaphragm Construction: Block Dist. X=0'							
Shearwall	Dist./ Hitch	Length	PLF	# of Joists	Lags	Notes	SW1/SW2
A	0'	56"	162	2	1/1	*	
B	24.96'	136"	162	2	2/1		
C	60'	123.5"	162	2	1/1	Split Shearwall	59.75/63.75

\* Denotes that indicated shearwall is over full depth/width front steel chassis header.

**APPROVED** **HWG** **APPROVED**  
 SEP 04 2025  
 FP-28-5516  
 Federal Manufactured  
 Home Construction  
 And Safety Standards

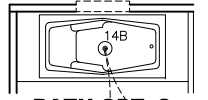
37m208-SW-0-N

1640 SQ.FT. (STD PLAN "CONDITIONED")  
 N/A SQ.FT. (W/OPT. PORCH/RECESS "CONDITIONED")

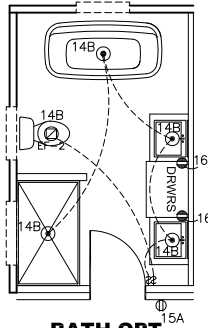
<b>Clayton Built</b>	Model #: SAV28G03A	Drawing #:
	Date: 08/05/25	Scale: N.T.S.
Product Designer: E HARDWICK	28 X 60 Stella	
<b>SHEARWALL PAGE</b>		

CIRCUIT	CIRCUIT #	WIRE	BREAKER	CIRCUIT	CIRCUIT #	WIRE	BREAKER	CIRCUIT	CIRCUIT #	WIRE	BREAKER
LIGHT/RECEP	1A,B,3A,B,14A,B,15A	14-2	15-SP	WATER HEATER	4A,6B	SEE NOTE #8		BATHROOM	16A	12-2	20-SP
KITCHEN/DINING	2A,2B	12-2	20-SP	RANGE	5B,7A	SEE NOTE #8		OPT G/DISP	9B	SEE NOTE #8	
WASHER	12A	12-2	20-SP	OPT GAS RANGE	15B	SEE NOTE #8		OPT SPA/JP/JAC	11A,B	SEE NOTE #8	
DRYER	5A,7B	SEE NOTE #8		FURNACE	6A,8A,B,10A,B	SEE NOTE #8		FREEZER	N/A	SEE NOTE #8	
				OPT D/WASH	9A	SEE NOTE #8					
				SMOKE ALARM/CO	4B	SEE NOTE #8					

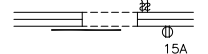
**OPT WINDOWS**



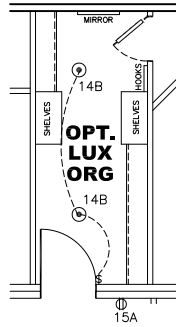
**BATH OPT. 2**



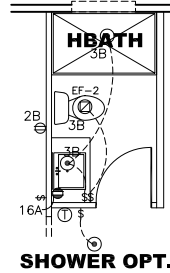
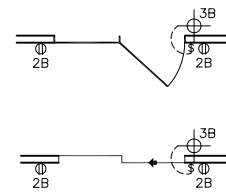
**BATH OPT.**



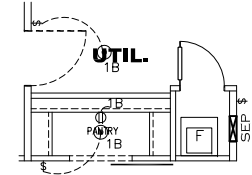
**BARN DOOR OPT.**



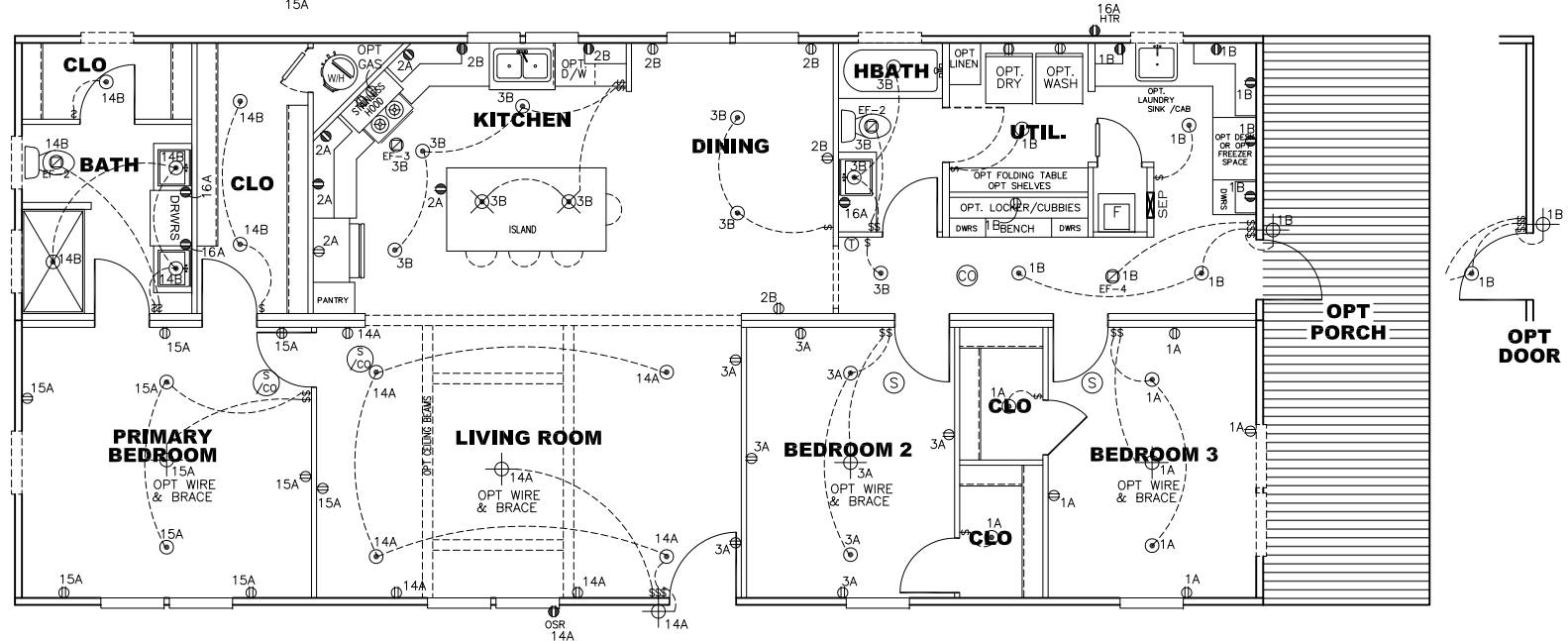
**OPT. LUX ORG**



**SHOWER OPT.**

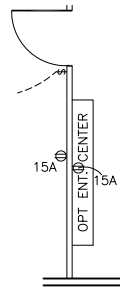


**PANTRY OPT.**

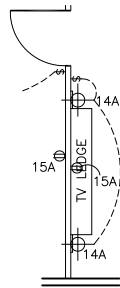


**NOTES:**

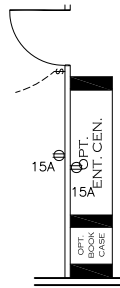
- ALL CIRCUITS SHOWN ARE FOR REFERENCE AND MAY BE CHANGED BASED ON OPTIONAL COMPONENTS INSTALLED IN THE HOME.
- REFER TO DAPIA MANUAL FOR SYMBOL CHART.
- EITHER LIGHT OR RECEPTACLE MUST CONNECT TO SWITCH.
- EF-1= 50 CFM EXHAUST FAN REQUIRED FOR THERMAL ZONE III THERMAL ZONES I & II MAY USE FAN OR WINDOW W/1.5 SQ. FT. OPENABLE GLASS.
- EF-2= 50 CFM EXHAUST FAN REQUIRED THERMAL ZONE I, II, AND III.
- EF-3= 100 CFM RANGE EXHAUST FAN, SWITCH AT HOOD.
- EF-4= WHOLE HOUSE VENTILATION REQUIREMENTS PER DAPIA MANUAL.
- REFER TO DAPIA MANUAL OR THE MFG. INSTALLATION INSTRUCTIONS FOR PROPER WIRE SIZE AND BREAKER SIZE FOR SPECIFIC APPLIANCE AND MODEL BEING INSTALLED.
- ALL SMOKE ALARMS TO BE LOCATED ON THE CEILING.
- CARBON MONOXIDE ALARMS ARE ONLY REQUIRED WHEN HOME HAS EITHER FUEL BURNING APPLIANCES, IS GARAGE READY OR IS BASEMENT READY. REFERENCE DAPIA MANUAL FOR ADDITIONAL INFORMATION.
- DIMENSIONS SHOWN ON PRINT ARE APPROXIMATE AND TO BE USED ONLY AS A GUIDELINE.



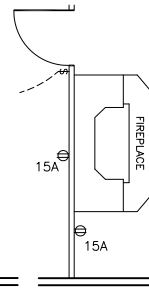
**OPT.**



**OPT.**



**OPT.**



**OPT.**

**APPROVED**

**HWC**

AUG 21 2024  
REVISED

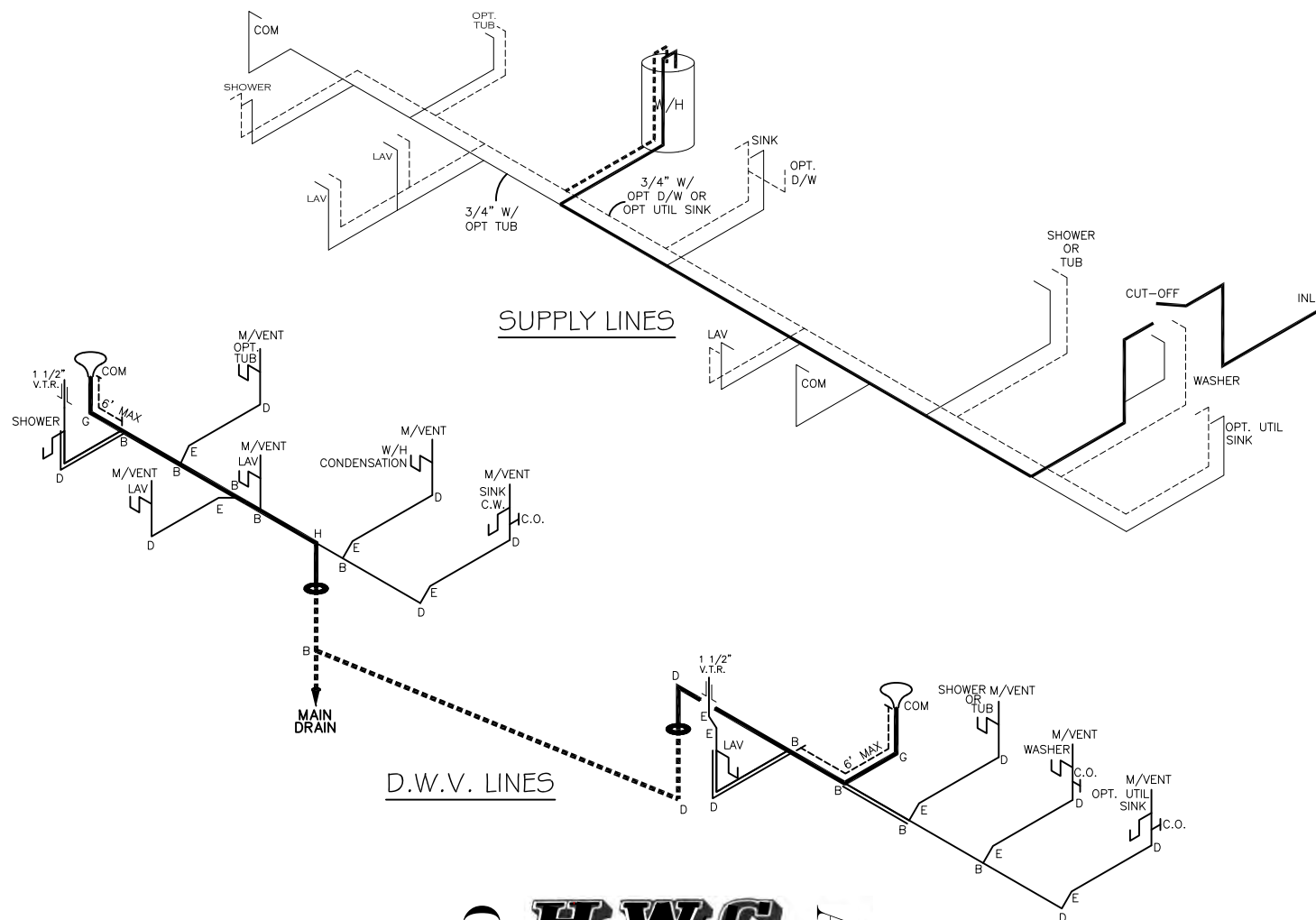
FP-28-5516

Federal Manufactured  
Home Construction  
And Safety Standards

**APPROVED**

NOTE:  
DASHED LINES INDICATE HOT WATER  
SOLID LINES INDICATE COLD WATER

— = 3/4"  
— = 1/2"



MDL: 8.75 FEET - 3/4"  
MDL: 46.25 FEET - 1/2"  
GALLON VOLUME: 0.59

LEGEND	
A	SHORT TURN T-Y
B	LONG TURN T-Y
C	1/4 BEND
D	LONG SWEEP 1/4 BEND
E	45 ELL
F	DBL. SANITARY TEE
G	4x3 CLOSET ELL
H	DOUBLE ELL
I	22 1/2° ELL
J	45° Y
K	LONG TURN STREET ELBOW
L	45 FTG ELL

DWV LINE SIZE CHART	
—	= 3"
—	= 2"
—	= 1 1/2"

APPROVED

**HWC**

AUG 21 2024  
REVISED

FP-28-5516

Federal Manufactured  
Home Construction  
And Safety Standards

APPROVED

6

1640 SQ.FT. (STD PLAN "CONDITIONED")  
N/A SQ.FT. (W/OPT. PORCH/RECESS "CONDITIONED")

	Model #: SAV28603A	Drawing #:
	Date: 2/18/22	Scale: N.T.S. 37M208
Product Designer: E HARDWICK		28 X 60 Stella
<b>D.W.V. and Supply Lines</b>		