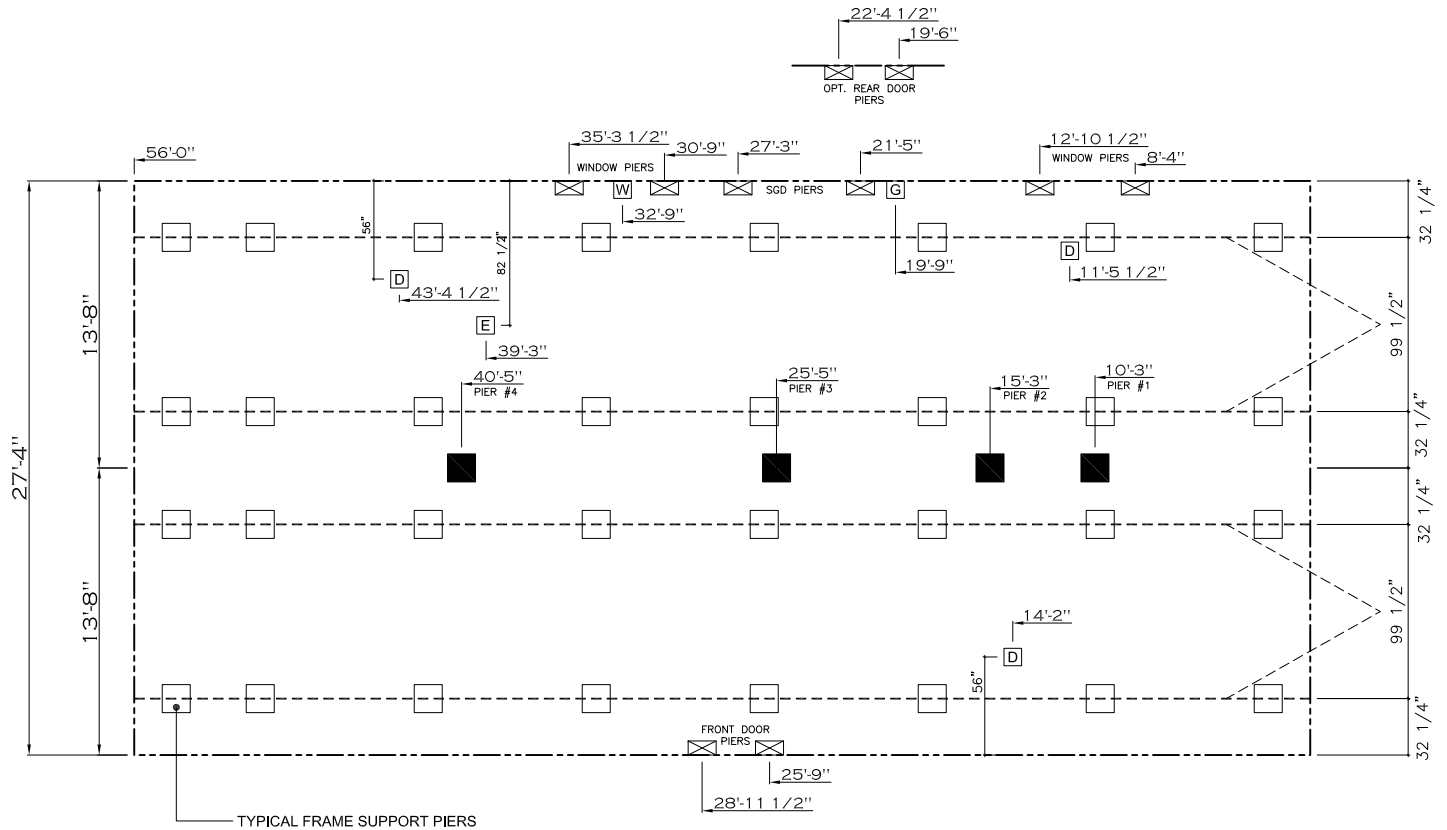


20 lb ROOF LOAD SIDEWALL OPENING PIER LOAD 28' BOX WIDTH	SIDEWALL OPENING (FT) REQUIRED PIER LOAD (LBS)					
	3	4	5	6	8	10
	1175	1330	1485	1640	1950	2260

*FOR 30 lb & 40 lb ROOF LOAD REFER TO TABLES 7b & 7c IN THE INSTALLATION MANUAL.

PIER LEGEND	
	= SUPPORT UNDER MATING OPENING
	= SUPPORT AT MATING COLUMN
	= SUPPORT UNDER MATING WALL
	= PIER PORCH/RECESSED ENTRY
	= PIER MAIN BEAM
	= PIER PERIMETER
	= TIE-DOWN SUPPORT (QTY PER TBL M, SEE DETAIL D-6 IN FOUND, PKG.)

SERVICE DROP LEGEND	
	= ELECTRICAL DROP
	= WATER INLET
	= DWV PLUMBING DROP
	= GAS INLET



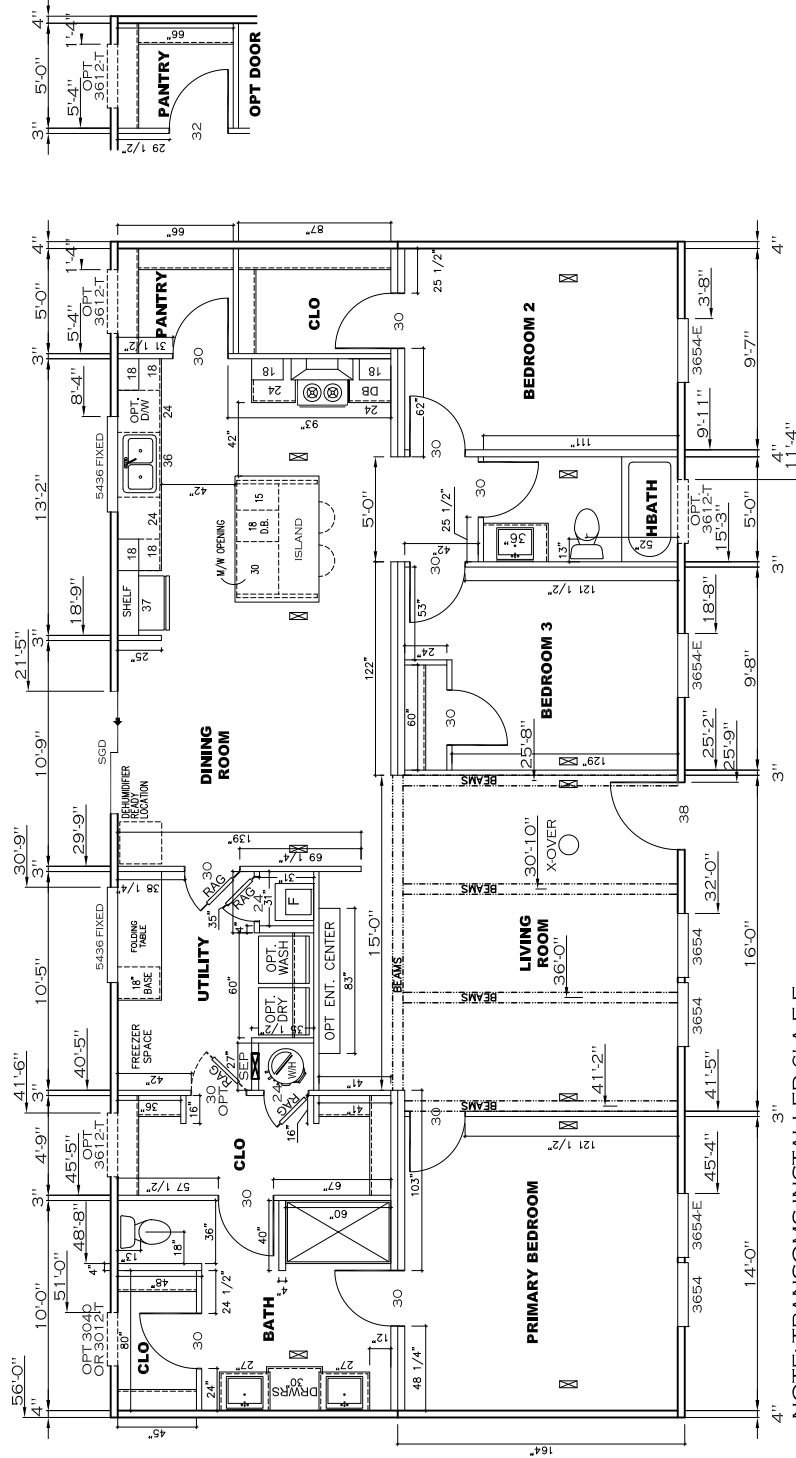
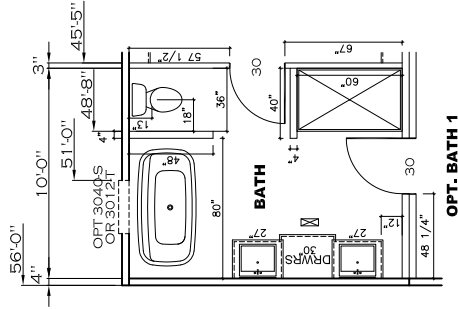
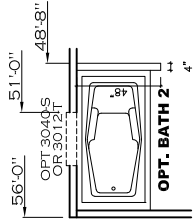
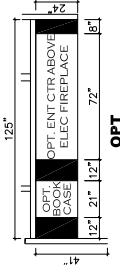
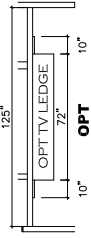
GENERAL NOTES:

- PIER LOADS SHOWN ARE TO BE USED TO SIZE THE FOOTINGS BELOW THE MARRIAGEWALL FOR COLUMN SUPPORT PIERS. REFER TO TABLES 6b AND 6c IN THE INSTALLATION MANUAL FOR LOAD ON FRAME PIER FOOTINGS FOR HOMES THAT DO NOT REQUIRE PERIMETER BLOCKING. REFER TO TABLES 7b AND 7c IN THE INSTALLATION MANUAL FOR LOAD ON FRAME PIER FOOTINGS THAT REQUIRE PERIMETER BLOCKING. REFER TO TABLES 10 AND 10a TO DETERMINE FOOTING SIZE FOR ALL PIERS.
- REFER TO TABLE 9 FOR PIER CONFIGURATION AND MAXIMUM ALLOWABLE HEIGHTS. CROSS REFERENCE THE PIER HEIGHT WITH THE MAXIMUM ALLOWABLE FLOOR HEIGHT LISTED IN THE FRAME TIEDOWN CHARTS (TABLE 18, 19, AND 20).
- FLOOR WIDTH SHOWN IS FOR STANDARD PRODUCT ONLY. CONTACT THE MFG PLANT FOR SPECIFICATIONS OF OPTIONS ORDERED.
- SERVICE DROP LOCATIONS IDENTIFIED ARE APPROXIMATE.
- THE MAXIMUM SPACING FOR FRAME SUPPORT PIERS FOR 8" I-BEAMS IS 8 FEET, 10" & 12" I-BEAMS ARE 10 FEET.

20 psf Roof Live Load		
Column Pier #	Distance from Hitch	Pier Load (lbs)
1	10.25	1425
2	15.25	1425
3	25.417	3475
4	40.417	3475

1530 SQ.FT. (STD PLAN "CONDITIONED")
N/A SQ.FT. (W/OPT. PORCH/RECESS "CONDITIONED")

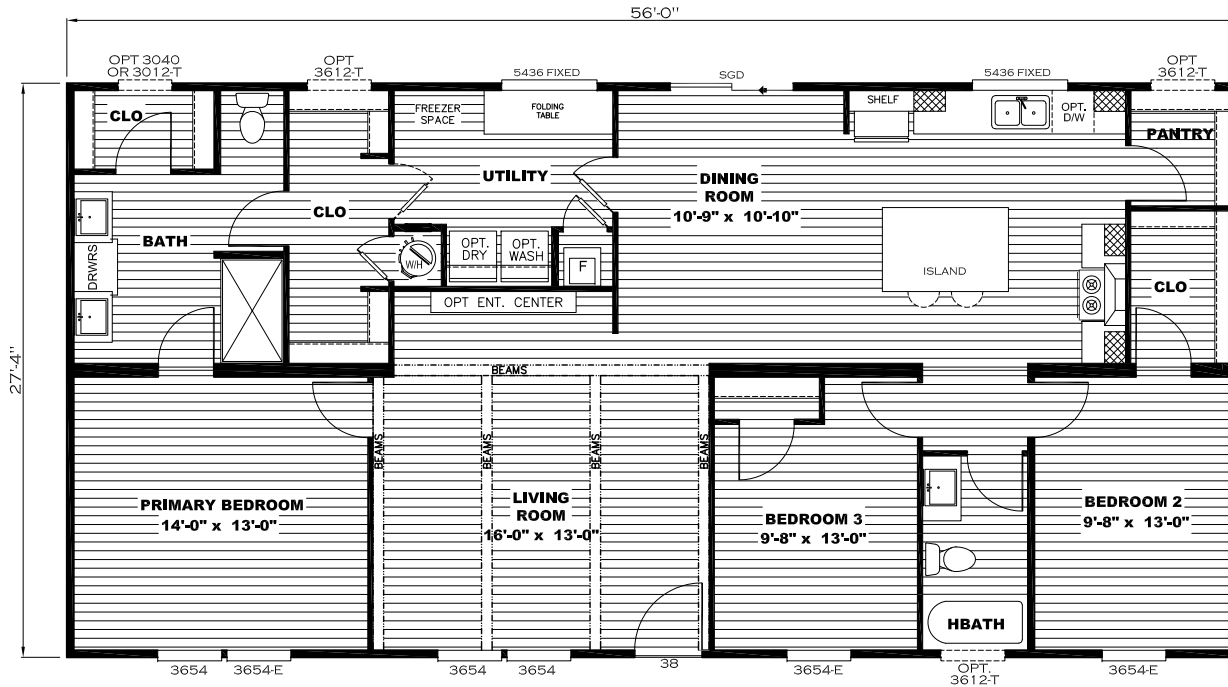
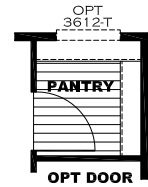
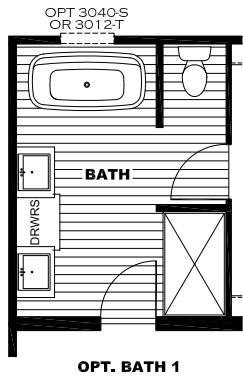
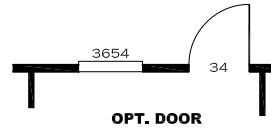
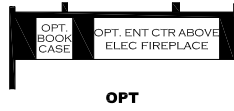
CMH MANUFACTURING Product Designer: J PIPES	Model #: SAV28563C	Drawing #:
	Date: 05/01/24 Scale: N/A	37M209
28' x 56' Bella Vista 5G		
PIER LOADS		



NOTE: TRANSOMS INSTALLED 6' A.F.F.
MDL: 3125-3/4"
MDL: 5125-1/2"
GALLON VOLUME: 1.05

1530 SQ.FT. (STD PLAN "CONDITIONED")
N/A SQ.FT. (W/OPT. PORCH/RECESS "CONDITIONED")

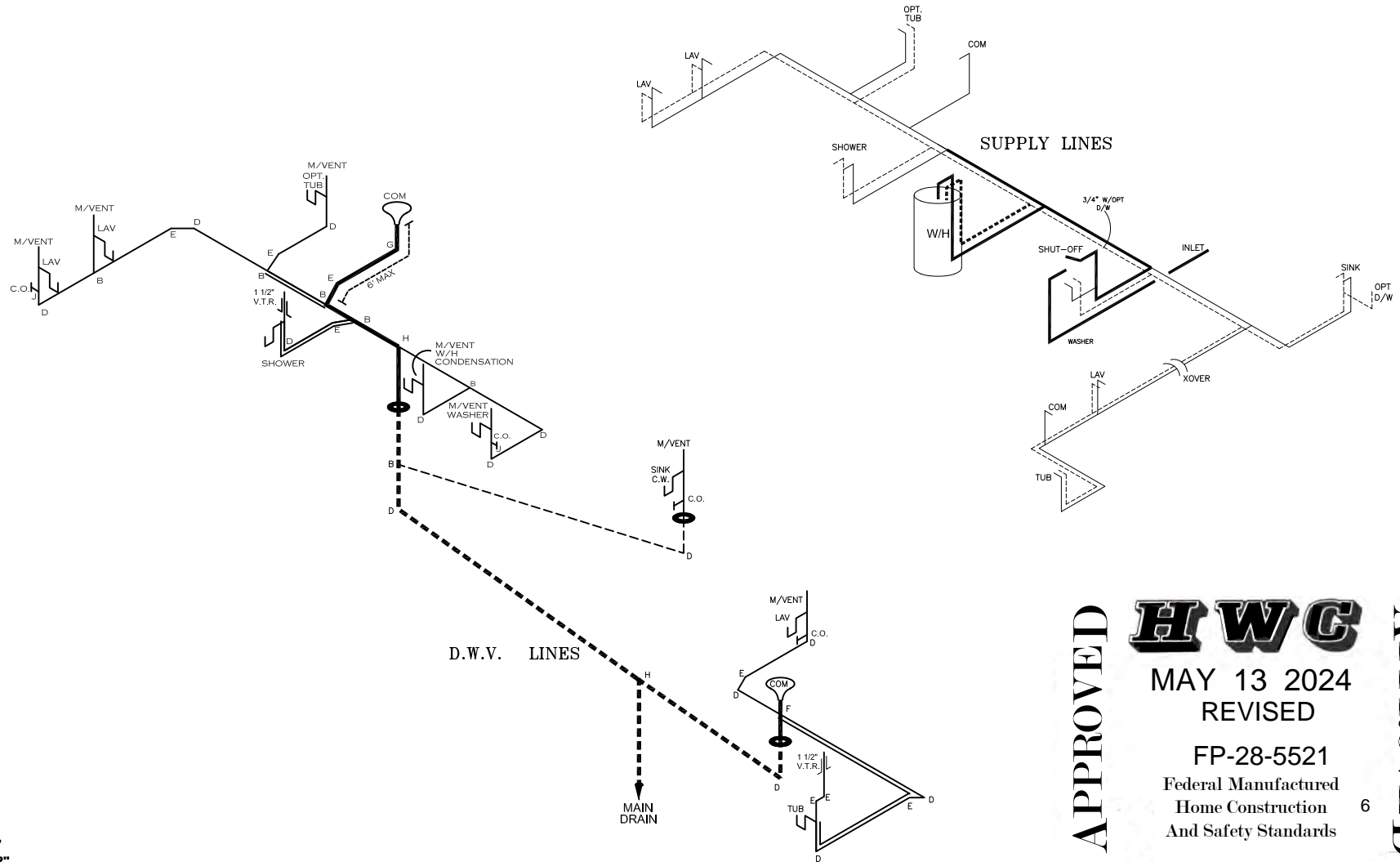
CMH MANUFACTURING	Model #: SAV28563C Date: 10/28/25	Scale: NA Drawing #: 37M209
Product Designer: J PIPES		28' x 56' Bella Vista 56
FLOOR PLAN		



28' x 56' Bella Vista 56
Model #: SAV28563C
Drawing #:
37M209

NOTE:
DASHED LINES INDICATE HOT WATER
SOLID LINES INDICATE COLD WATER

———— = 3/4"
———— = 1/2"



MDL: 8.75 FEET - 3/4"
MDL: 54.25 FEET - 1/2"
GALLON VOLUME: 0.66

LEGEND	
A	SHORT TURN T-Y
B	LONG TURN T-Y
C	1/4 BEND
D	LONG SWEEP 1/4 BEND
E	45 ELL
F	DBL. SANITARY TEE
G	4x3 CLOSET ELL
H	DOUBLE ELL
I	22 1/2° ELL
J	45° Y
K	LONG TURN STREET ELBOW
L	45 FTG ELL

DWV LINE SIZE CHART	
————	= 3"
————	= 2"
————	= 1 1/2"

APPROVED

HWG

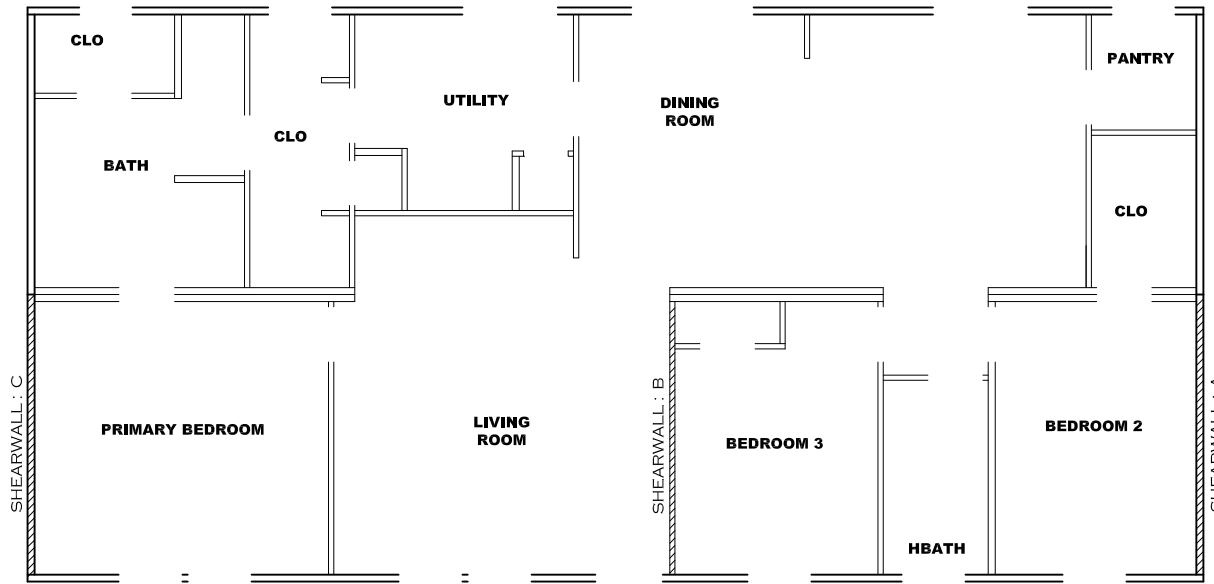
MAY 13 2024
REVISED

FP-28-5521
Federal Manufactured
Home Construction
And Safety Standards

APPROVED

1530 SQ.FT. (STD PLAN "CONDITIONED")
N/A SQ.FT. (W/OPT. PORCH/RECESS "CONDITIONED")

Product Designer: J PIPES	Model #: SAV28563C	Drawing #:
	Date: 05/01/24	Scale: N/A
D.W.V. and Supply Lines		



Model # 37M209

Box Width = 164 " Double wide Minimum Joist Spacing 16 "
 Box Length = 56 ft. 99.5" 12" MIN. IBEAM No Offset Box
 No Skylights No Origami Dormer
 No Porches No Sunken Floor
 Joist Size = #2 sp 2x6 Lags 9Mx3" No Parapet Roof

Version R14.00

Wind Zone 1 Standard Roof		7/16" Rated Sheathing and Ceiling Board with 15 ga staple @ 6/12 (286,315) Chords: 2x4 SPF #3 Top Plate spliced w/2x4 MCP & 2x3 SPF Rail spliced w/2x4 MCP				96 inch sidewall
Diaphragm Construction:		Block Dist. X=0'				
Shearwall	Dist./ Hitch	Length	PLF	# of Joists	Lags	Notes
A	0'	96"	162	2	1/1	*
B	25.29'	128"	162	2	2/1	
Wind Zone 2 Standard Roof		7/16" Rated Sheathing and Ceiling Board with 15 ga staple @ 6/12 (286,315) Chords: 2x4 SPF #3 Top Plate spliced w/2x4 MCP & 2x3 SPF Rail spliced w/2x4 MCP				96 inch sidewall
Diaphragm Construction:		Block Dist. X=0'				
Shearwall	Dist./ Hitch	Length	PLF	# of Joists	Lags	Notes
A	0'	148"	162	2	2/1	*
B	25.29'	Full	350	2	2/2	
C	56'	116"	250	2	2/1	
Wind Zone 3 Standard Roof		7/16" Rated Sheathing and Ceiling Board with 15 ga staple @ 6/12 (286,315) Chords: 2x4 SPF #3 Top Plate spliced w/2x4 MCP & 2x3 SPF Rail spliced w/2x4 MCP				96 inch sidewall
Diaphragm Construction:		Block Dist. X=0'				
Shearwall	Dist./ Hitch	Length	PLF	# of Joists	Lags	Notes
A	0'	116"	250	2	2/1	*
B	25.29'	Full	430	2	3/3	
C	56'	140"	250	2	3/2	

* Denotes that indicated shearwall is over full depth/width front steel chassis header.

HWG
OCT 29 2025

FP-28-5521
Federal Manufactured
Home Construction
And Safety Standards

6

APPROVED

APPROVED

37M209-SW-0-N

1530 SQ.FT. (STD PLAN "CONDITIONED")
 N/A SQ.FT. (W/OPT. PORCH/RECESS "CONDITIONED")

CMH MANUFACTURING	Model #: SAV28563C	Drawing #:
	Date: 10/28/25	Scale: N/A
Product Designer: J PIPES		28' x 56' Bella Vista 5G
SHEARWALL PAGE		NEW

APPROVED

HWC

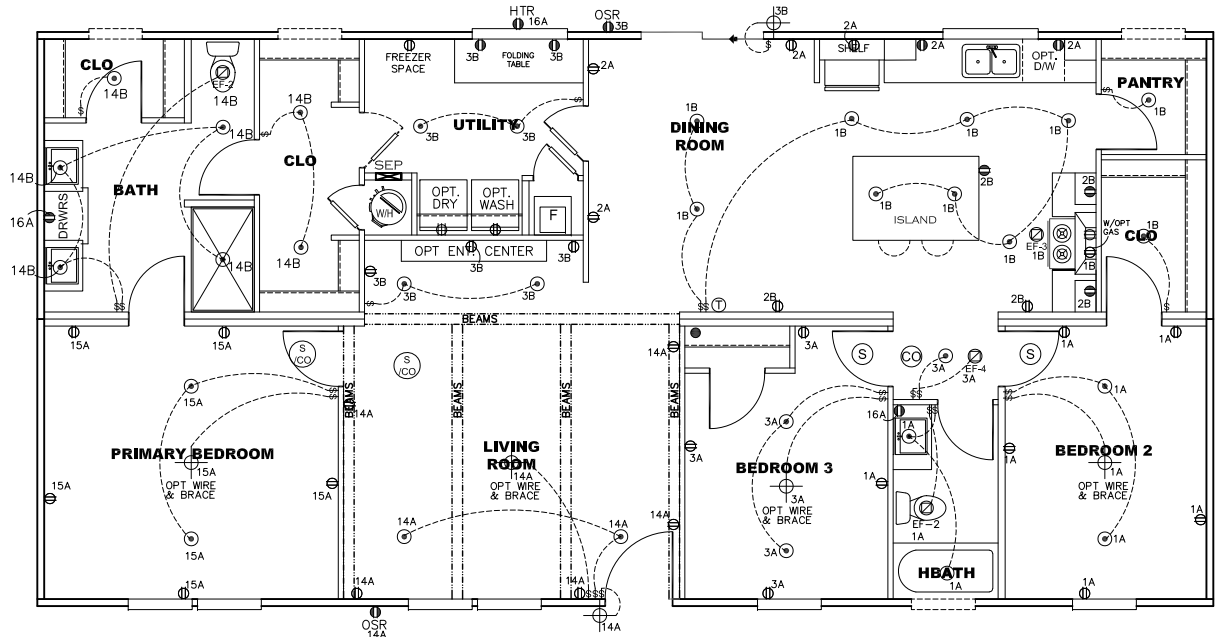
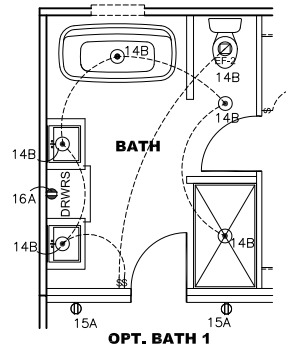
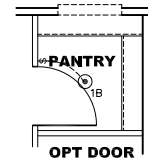
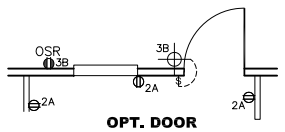
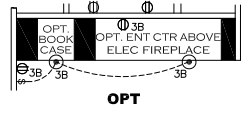
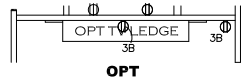
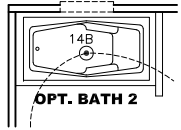
APPROVED

OCT 29 2025
REVISED

FP-28-5521

Federal Manufactured
Home Construction
And Safety Standards

6



● = DATA PORT LOCATION
INLET MUST BE LOCATED PER DAPIA

- NOTES:
- ALL CIRCUITS SHOWN ARE FOR REFERENCE AND MAY BE CHANGED BASED ON OPTIONAL COMPONENTS INSTALLED IN THE HOME.
 - REFER TO DAPIA MANUAL FOR SYMBOL CHART.
 - EITHER LIGHT OR RECEPTACLE MUST CONNECT TO SWITCH.
 - EF-1= 50 CFM EXHAUST FAN REQUIRED FOR THERMAL ZONE III THERMAL ZONES I & II MAY USE FAN OR WINDOW W/1.5 SQ. FT. OPENABLE GLASS.
 - EF-2= 50 CFM EXHAUST FAN REQUIRED THERMAL ZONE I, II, AND III.
 - EF-3= 100 CFM RANGE EXHAUST FAN, SWITCH AT HOOD.
 - EF-4= WHOLE HOUSE VENTILATION REQUIREMENTS PER DAPIA MANUAL.
 - REFER TO DAPIA MANUAL OR THE MFG. INSTALLATION INSTRUCTIONS FOR PROPER WIRE SIZE AND BREAKER SIZE FOR SPECIFIC APPLIANCE AND MODEL BEING INSTALLED.
 - ALL SMOKE ALARMS TO BE LOCATED ON THE CEILING.
 - CARBON MONOXIDE ALARMS ARE ONLY REQUIRED WHEN HOME HAS EITHER FUEL BURNING APPLIANCES, IS GARAGE READY OR IS BASEMENT READY. REFERENCE DAPIA MANUAL FOR ADDITIONAL INFORMATION.
 - DIMENSIONS SHOWN ON PRINT ARE APPROXIMATE AND TO BE USED ONLY AS A GUIDELINE.

CIRCUIT	CIRCUIT #	WIRE	BREAKER	CIRCUIT	CIRCUIT #	WIRE	BREAKER	CIRCUIT	CIRCUIT #	WIRE	BREAKER
LIGHT/RECEP	1A,1B,3A,3B,14A,B	14-2	15-SP	WATER HEATER	4A,6B	SEE NOTE #8		BATH / HTR	16 A	12-2	20-SP
KITCHEN/DINING	2A, 2B	12-2	20-SP	RANGE	5B,7A	SEE NOTE #8		OPT G/DISP	9B	SEE NOTE #8	
WASHER	12A	12-2	20-SP	FURNACE	6A,8A,B,10A,B	SEE NOTE #8		OPT SPA/ WPI/JAC	11A,B	SEE NOTE #8	
DRYER	5A,7B	SEE NOTE #8		OPT D/WASH	9A	SEE NOTE #8		FREEZER	13 A	SEE NOTE #8	
				SMOKE ALARM	4B	SEE NOTE #8					

1530 SQ.FT. (STD PLAN "CONDITIONED")
N/A SQ.FT. (W/OPT. PORCH/RECESS "CONDITIONED")

CMH MANUFACTURING	Model #: 5AV28563C	Drawing #:
	Date: 10/28/25	Scale: N/A
Product Designer: J PIPE5		28' x 56' Bella Vista 56
ELECTRICAL PLAN-06		

