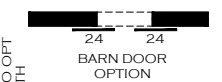
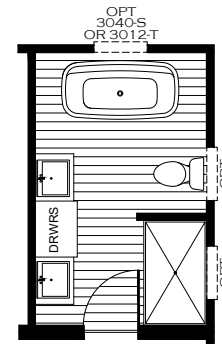
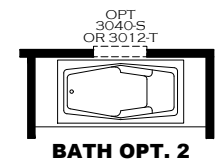
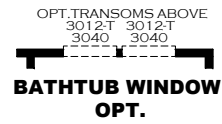
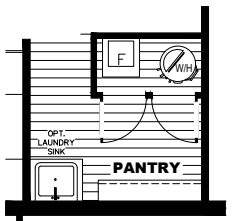
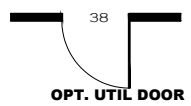


OPT WINDOWS FOR 28 WIDE DORMER

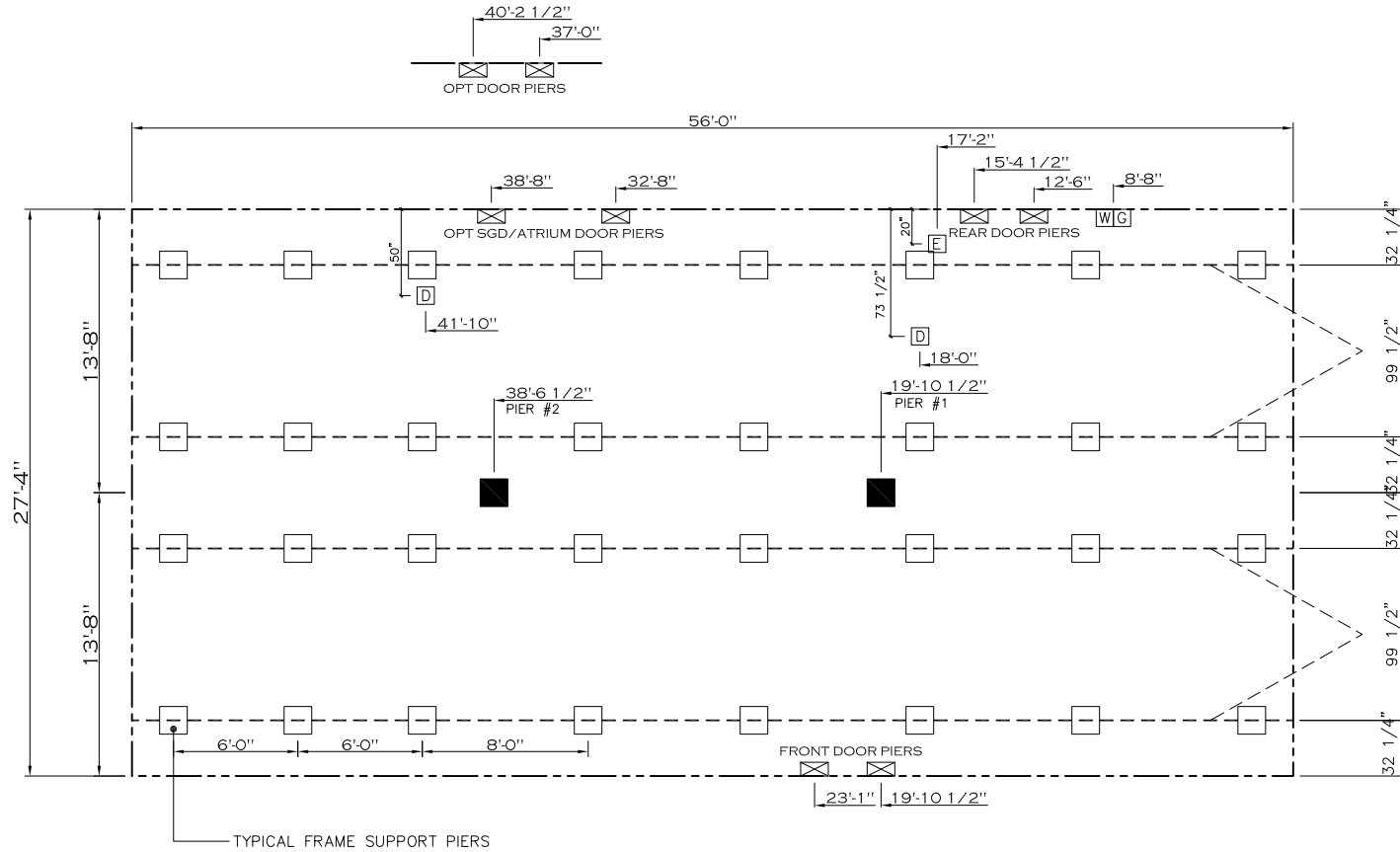


WHEN 2 OPT WINDOWS IN PRIMARY BEDROOM ARE INSTALLED, NO OPT TRANSOM IN PRIMARY BATH

28x56 Number One
 Model #: SAV28563A
 Drawing #:
 37M250

20 lb ROOF LOAD SIDEWALL OPENING PIER LOAD 28' BOX WIDTH	SIDEWALL OPENING (FT) REQUIRED PIER LOAD (LBS)					
	3	4	5	6	8	10
	1175	1330	1485	1640	1950	2260

*FOR 30 lb & 40 lb ROOF LOAD REFER TO TABLES 7b & 7c IN THE INSTALLATION MANUAL.



SERVICE DROP LEGEND	
[E]	= ELECTRICAL DROP
[W]	= WATER INLET
[D]	= DWV PLUMBING DROP
[G]	= GAS INLET

PIER LEGEND	
[□]	= SUPPORT UNDER MATING OPENING
[■]	= SUPPORT AT MATING COLUMN
[▨]	= SUPPORT UNDER MATING WALL
[■]	= PIER PORCH/RECESSED ENTRY
[□]	= PIER MAIN BEAM
[∞]	= PIER PERIMETER

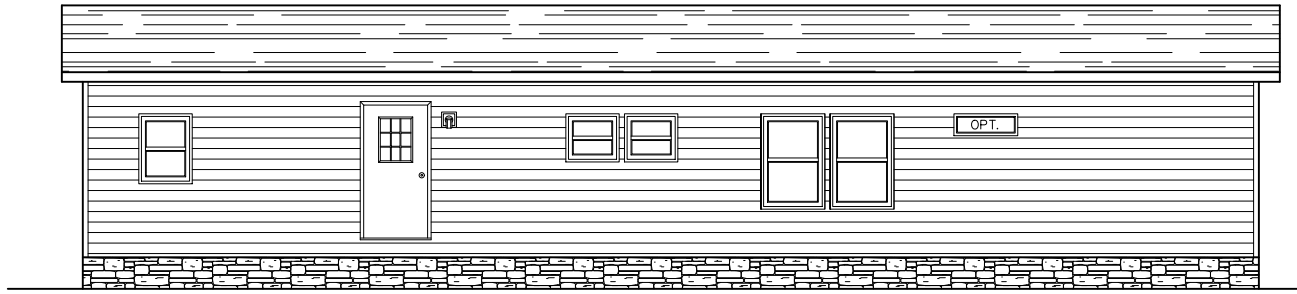
GENERAL NOTES:

- PIER LOADS SHOWN ARE TO BE USED TO SIZE THE FOOTINGS BELOW THE MARRIAGEWALL FOR COLUMN SUPPORT PIERS. REFER TO TABLES 6b AND 6c IN THE INSTALLATION MANUAL FOR LOAD ON FRAME PIER FOOTINGS FOR HOMES THAT DO NOT REQUIRE PERIMETER BLOCKING. REFER TO TABLES 7b AND 7c IN THE INSTALLATION MANUAL FOR LOAD ON FRAME PIER FOOTINGS THAT REQUIRE PERIMETER BLOCKING. REFER TO TABLES 10 AND 10a TO DETERMINE FOOTING SIZE FOR ALL PIERS.
- REFER TO TABLE 9 FOR PIER CONFIGURATION AND MAXIMUM ALLOWABLE HEIGHTS. CROSS REFERENCE THE PIER HEIGHT WITH THE MAXIMUM ALLOWABLE FLOOR HEIGHT LISTED IN THE FRAME TIEDOWN CHARTS (TABLE 18, 19, AND 20).
- FLOOR WIDTH SHOWN IS FOR STANDARD PRODUCT ONLY. CONTACT THE MFG PLANT FOR SPECIFICATIONS OF OPTIONS ORDERED.
- SERVICE DROP LOCATIONS IDENTIFIED ARE APPROXIMATE.
- THE MAXIMUM SPACING FOR FRAME SUPPORT PIERS FOR 8" I-BEAMS IS 8 FEET, 10" & 12" I-BEAMS ARE 10 FEET.

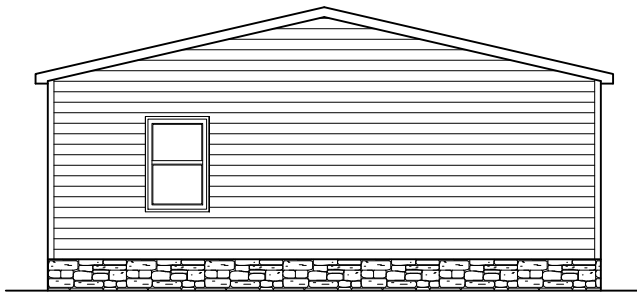
20 psf Roof Live Load		
Column Pier #	Distance from Hitch	Pier Load (lbs)
1	19.875	4227
2	38.542	4227

1529 SQ.FT. (STD PLAN "CONDITIONED")
N/A SQ.FT. (W/OPT. PORCH/RECESS "CONDITIONED")

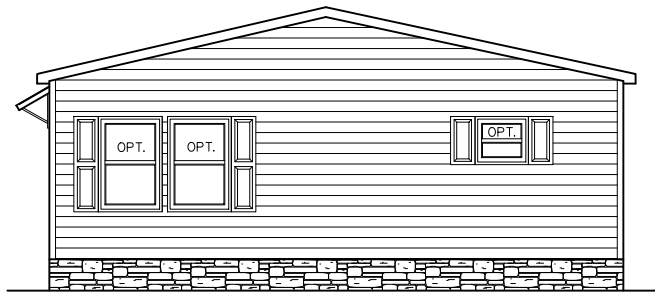
	Model #: 5AV28563A	Drawing #:
	Date: 4/8/22	Scale: NTS
Product Designer: E HARDWICK		28x56 Number One
PIER LOADS		



REAR ELEVATION



LEFT ELEVATION




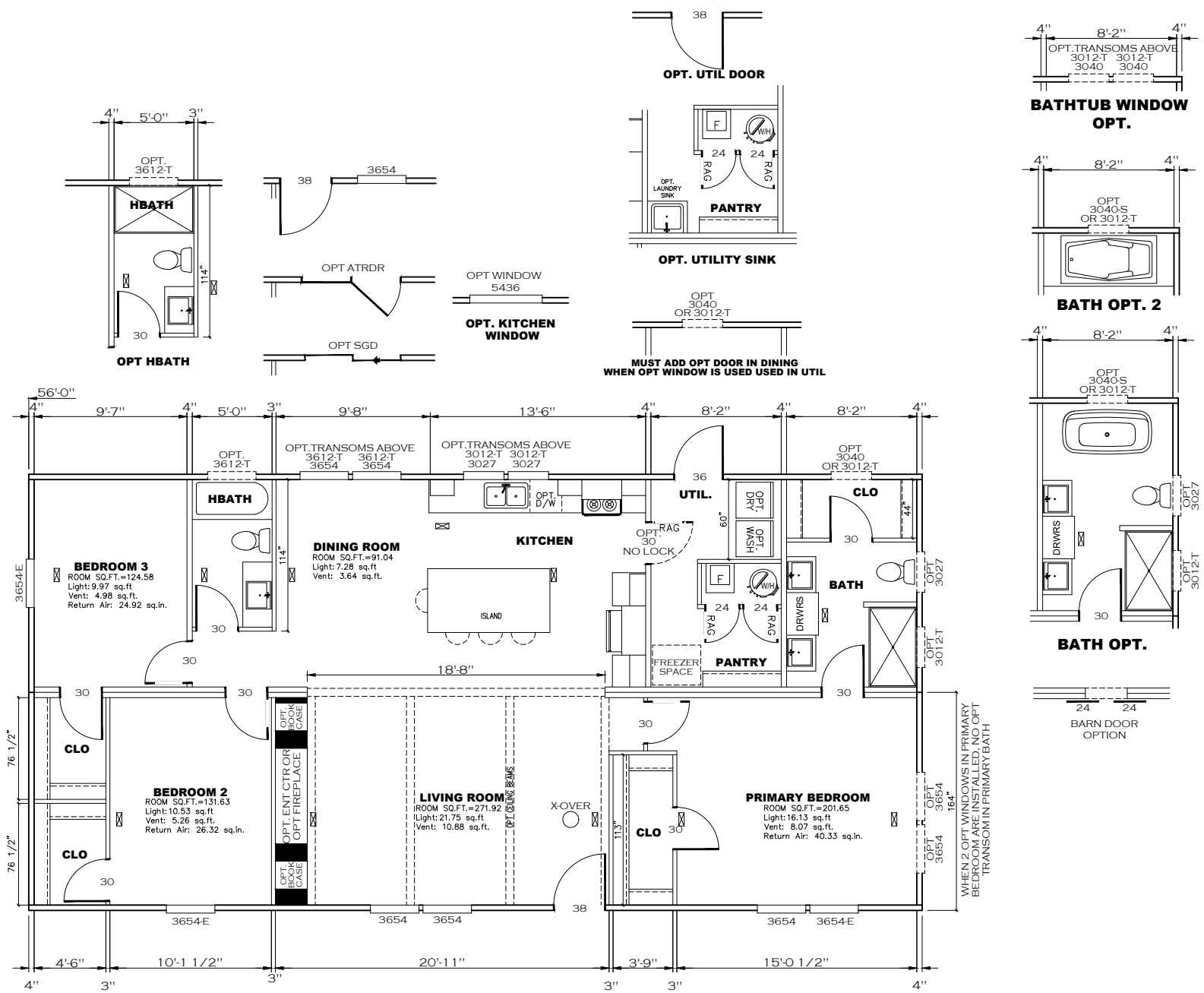
RIGHT ELEVATION



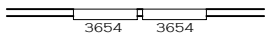
FRONT ELEVATION

1529 SQ.FT. (STD PLAN "CONDITIONED")
 N/A SQ.FT. (W/OPT. PORCH/RECESS "CONDITIONED")

	Model #: 5AV28563A	Drawing #:
	Date: 12/10/25	Scale: NTS
Product Designer: E. HARDWICK		28x56 Number One
ELEVATION		



NOTE: TRANSOMS INSTALLED 6" A.F.F.



OPT WINDOWS FOR 28 WIDE DORMER

WHEN 2 OPT WINDOWS IN PRIMARY BEDROOM ARE INSTALLED, NO OPT TRANSOM IN PRIMARY BATH

1529 SQ.FT. (STD PLAN "CONDITIONED")
 N/A SQ.FT. (W/OPT. PORCH/RECESS "CONDITIONED")

Clayton Built	Model #: 5AV285G3A	Drawing #:
	Date: 1/21/0/25	Scale: NT5
Product Designer: E HARDWICK	28x56 Number One	
FLOOR PLAN		

APPROVED

HWC

APPROVED

JAN 13 2025
REVISED

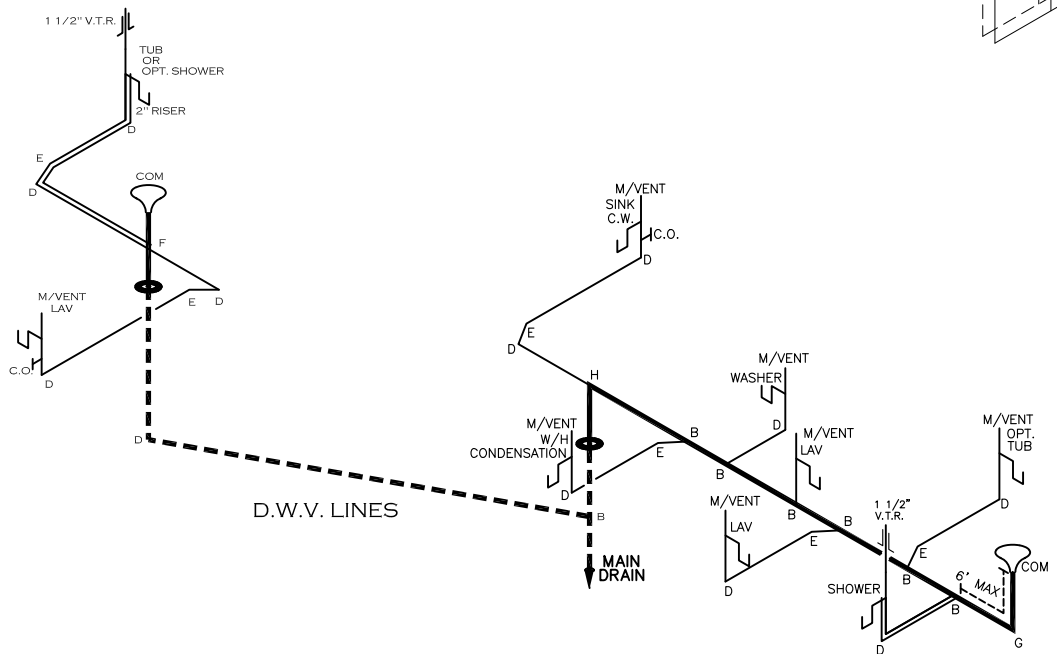
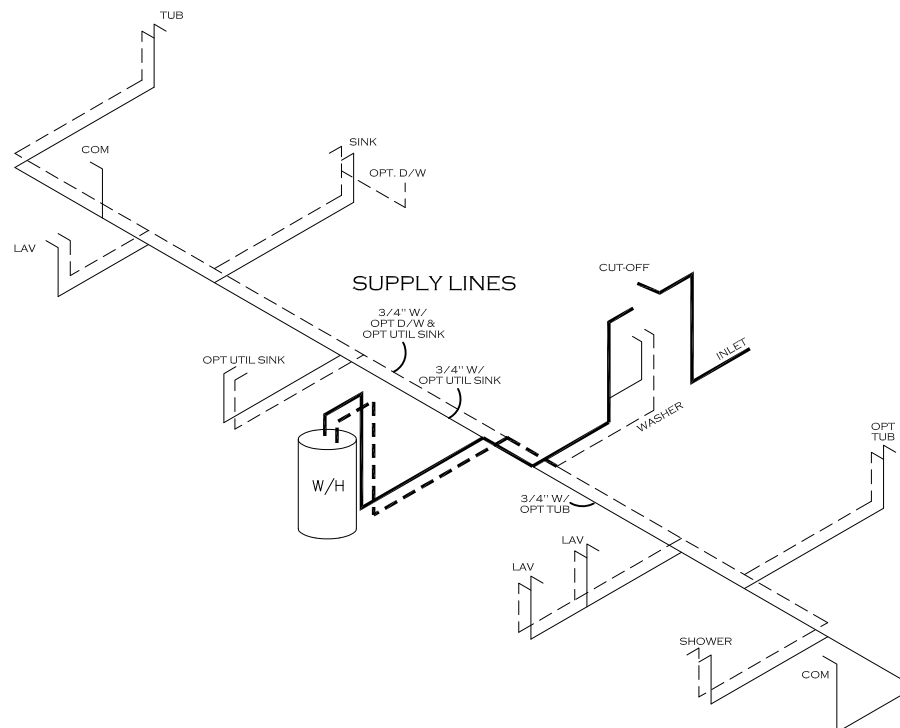
FP-28-5630

Federal Manufactured
Home Construction
And Safety Standards

6

NOTE:
DASHED LINES INDICATES HOT WATER
SOLID LINES INDICATES COLD WATER

———— = 3/4"
———— = 1/2"



DWV LINE SIZE CHART

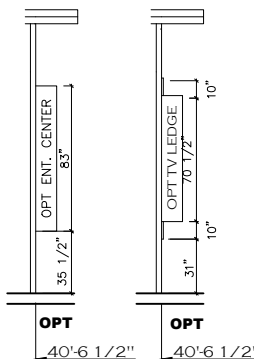
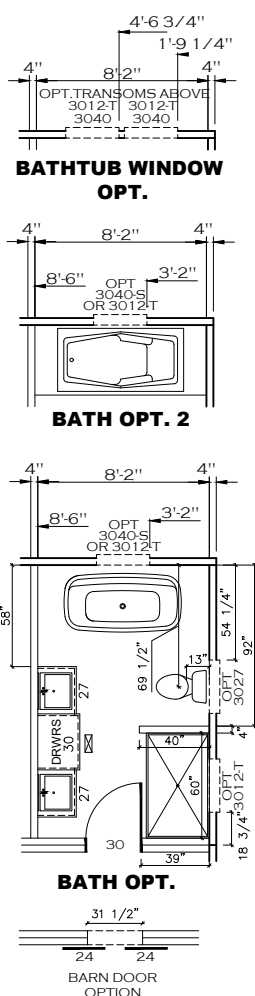
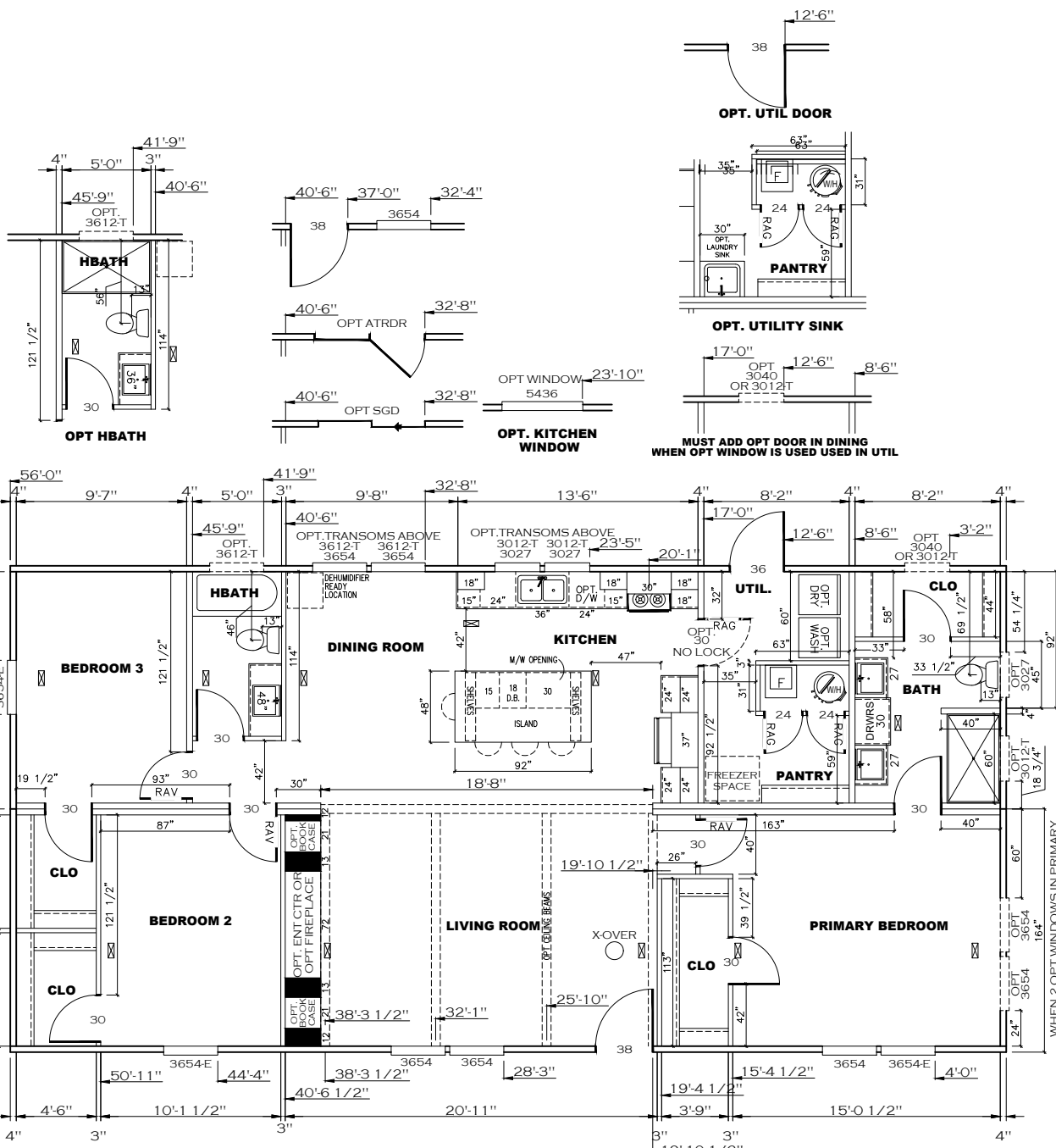
————	= 3"
————	= 2"
————	= 1 1/2"

LEGEND

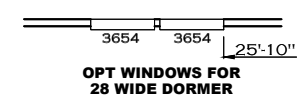
A	SHORT TURN T-Y
B	LONG TURN T-Y
C	1/4 BEND
D	LONG SWEEP 1/4 BEND
E	45 ELL
F	DBL. SANITARY TEE
G	4x3 CLOSET ELL
H	DOUBLE ELL
I	22 1/2' ELL
J	45' Y
K	LONG TURN STREET ELBOW
L	45 FTG ELL

1529 SQ.FT. (STD PLAN "CONDITIONED")
N/A SQ.FT. (W/OPT. PORCH/RECESS "CONDITIONED")

Clayton Built	Model #: SAV28563A	Drawing #:
	Date: 4/8/22	Scale: NTS 37M250
Product Designer: E HARDWICK		28 x 56 Number One
D.W.V. and Supply Lines		



NOTE: TRANSOMS INSTALLED 6" A.F.F.
 MDL: 11.5 - 3/4"
 MDL: 41 - 1/2"
 GALLON VOLUME: 0.59



1529 SQ.FT. (STD PLAN "CONDITIONED")
 N/A SQ.FT. (W/OPT. PORCH/RECESS "CONDITIONED")

	Model #: 5AV28563A	Drawing #:
	Date: 1/21/025	Scale: NTS
Product Designer: E HARDWICK	28x56 Number One	
FLOOR PLAN		