

Model # 37M206 Minimum Joist Spacing 16 "

Box Width = 164 " Double wide No Offset Box
 Box Length = 52 ft. 99.5" 12" MIN. IBEAM No Clerestory
 No Skylights No Origami Dormer
 No Porches No Sunken Floor
 Joist Size = #2 spf 2x6 Lags 9Mx3" No Parapet Roof

Version R13.19

Wind Zone 1 Standard Roof Ceiling board only [152 plf] Chords: 2x4 SPF #3 96 inch sidewall
 Top Plate spliced w/2x4 MCP & 2x3 SPF Rail
 Diaphragm Construction: spliced w/ 2x4 MCP

Shearwall	Dist./ Hitch	Length	PLF	# of Joists	Lags	Notes
A	0'	48"	162	2	1/1	*
B	19.96'	116"	162	2	2/1	
C	52'	72"	162	2	1/1	

Wind Zone 2 Standard Roof (3/8" sheathing only with 15 gax 1.5" at 5"/10" oc. 96 inch sidewall
 (197 plf) Chords: 2x4 SPF #3 Top Plate spliced
 Diaphragm Construction: w/2x4 MCP & 2x3 SPF Rail spliced w/ 2x4 MCP

Shearwall	Dist./ Hitch	Length	PLF	# of Joists	Lags	Notes
A	0'	104"	425	2	4/2	*
B	19.96'	Full	324	2	2/2	
C	52'	Full	425	2	5/5	

Wind Zone 3 Standard Roof (3/8" sheathing only with 15 gax 1.5" at 5"/10" oc. 96 inch sidewall
 (197 plf) Chords: 2x4 SPF #3 Top Plate spliced
 Diaphragm Construction: w/2x4 MCP & 2x3 SPF Rail spliced w/ 2x4 MCP

Shearwall	Dist./ Hitch	Length	PLF	# of Joists	Lags	Notes
A	0'	104"	425	2	4/2	*
B	19.96'	Full	425	2	3/3	
C	52'	Full	425	2	5/5	

Wind Zone 1 Standard Roof (3/8" sheathing only with 15 gax 1.5" at 5"/10" oc. 96 inch sidewall
 (197 plf) Chords: 2x4 SPF #3 Top Plate spliced
 Diaphragm Construction: w/2x4 MCP & 2x3 SPF Rail spliced w/ 2x4 MCP

Shearwall	Dist./ Hitch	Length	PLF	# of Joists	Lags	Notes
A	0'	104"	425	2	4/2	*
C	52'	116"	162	2	2/1	

APPROVED

HWG

FEB 17 2025
 REVISED

FP-28-5512
 Federal Manufactured
 Home Construction
 And Safety Standards

APPROVED

1421 SQ.FT. (STD PLAN "CONDITIONED")
 N/A SQ.FT. (W/OPT. PORCH/RECESS "CONDITIONED")

Clayton Built	Model #: SAV28523A	Drawing #:
	Date: 10/07/23 Scale: N/A	37M20G
Product Designer: J PIPES		28' x 52' HARDIN
SHEARWALL PAGE		

APPROVED

H W C

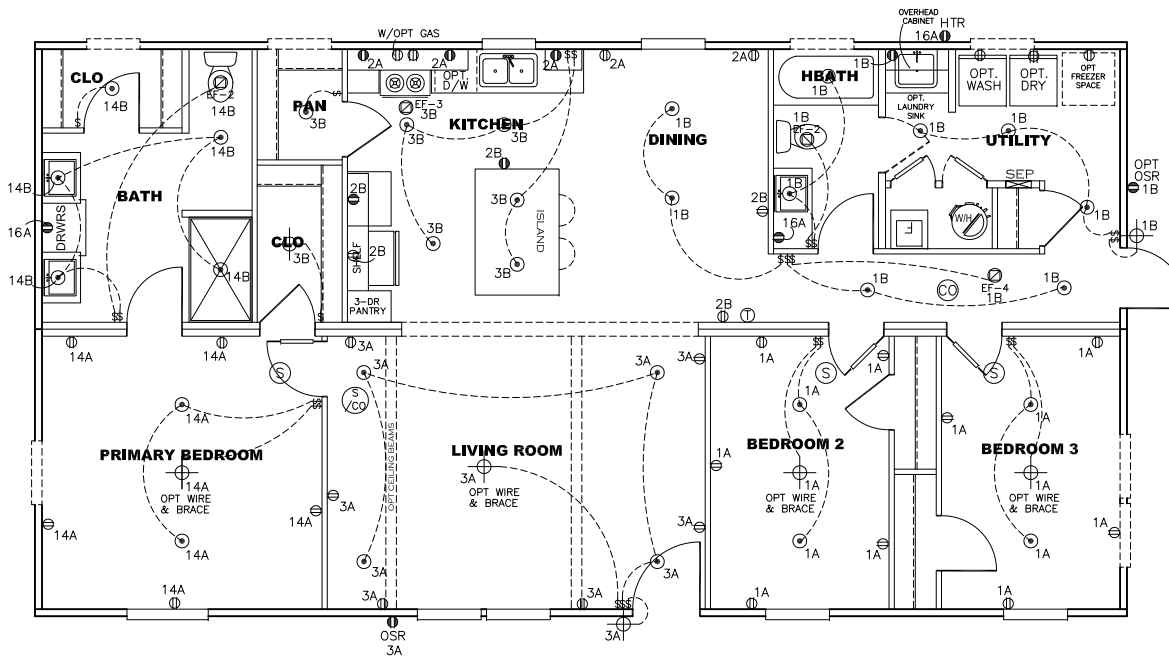
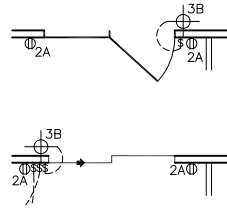
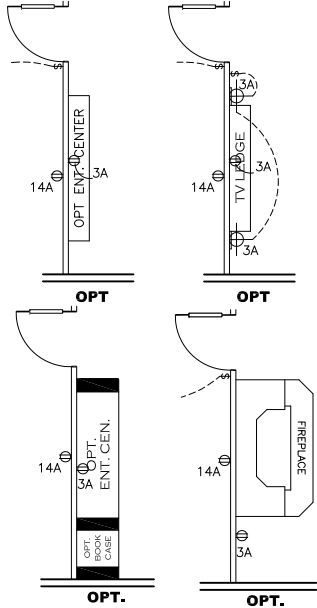
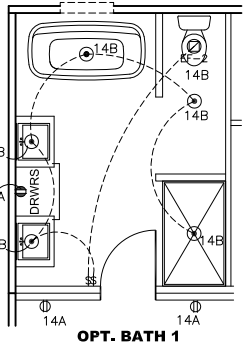
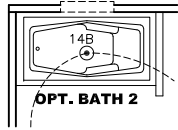
FEB 25 2025
REVISED

FP-28-5512

Federal Manufactured
Home Construction
And Safety Standards

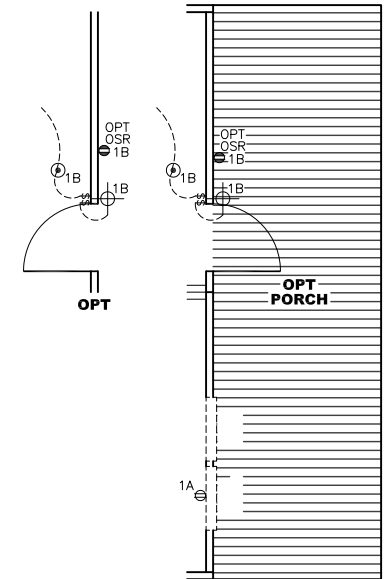
6

APPROVED



NOTES:

1. ALL CIRCUITS SHOWN ARE FOR REFERENCE AND MAY BE CHANGED BASED ON OPTIONAL COMPONENTS INSTALLED IN THE HOME.
2. REFER TO DAPIA MANUAL FOR SYMBOL CHART.
3. EITHER LIGHT OR RECEPTACLE MUST CONNECT TO SWITCH.
4. EF-1= 50 CFM EXHAUST FAN REQUIRED FOR THERMAL ZONE III THERMAL ZONES I & II MAY USE FAN OR WINDOW W/1.5 SQ. FT. OPENABLE GLASS.
5. EF-2= 50 CFM EXHAUST FAN REQUIRED THERMAL ZONE I, II, AND III.
6. EF-3= 100 CFM RANGE EXHAUST FAN, SWITCH AT HOOD.
7. EF-4= WHOLE HOUSE VENTILATION REQUIREMENTS PER DAPIA MANUAL.
8. REFER TO DAPIA MANUAL OR THE MFG. INSTALLATION INSTRUCTIONS FOR PROPER WIRE SIZE AND BREAKER SIZE FOR SPECIFIC APPLIANCE AND MODEL BEING INSTALLED.
9. ALL SMOKE ALARMS TO BE LOCATED ON THE CEILING.
10. CARBON MONOXIDE ALARMS ARE ONLY REQUIRED WHEN HOME HAS EITHER FUEL BURNING APPLIANCES, IS GARAGE READY OR IS BASEMENT READY. REFERENCE DAPIA MANUAL FOR ADDITIONAL INFORMATION.
11. DIMENSIONS SHOWN ON PRINT ARE APPROXIMATE AND TO BE USED ONLY AS A GUIDELINE.



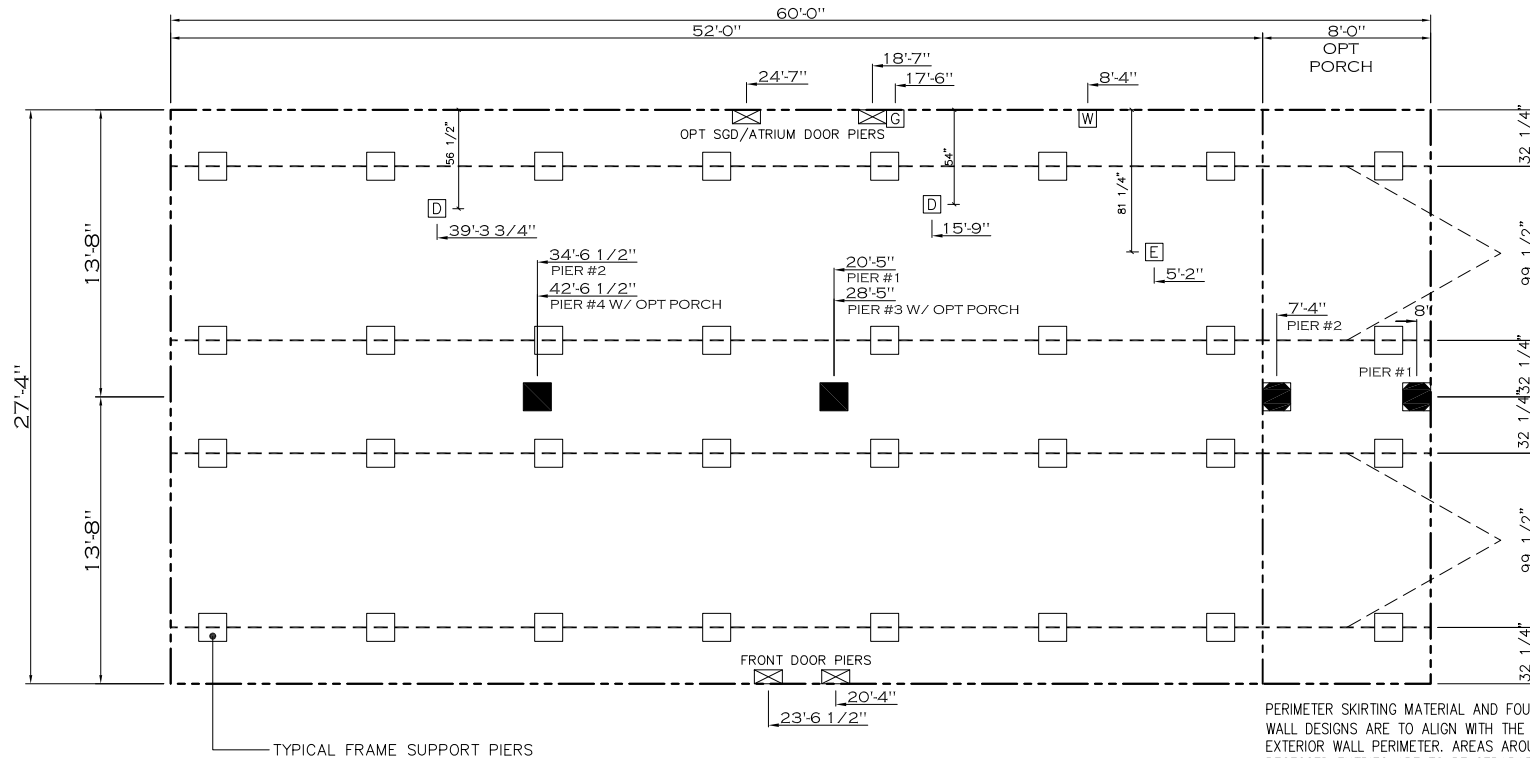
CIRCUIT	CIRCUIT #	WIRE	BREAKER	CIRCUIT	CIRCUIT #	WIRE	BREAKER	CIRCUIT	CIRCUIT #	WIRE	BREAKER
LIGHT/RECEP	1A,B,3A,B,14A,B	14-2	15-SP	WATER HEATER	4A,6B	SEE NOTE #8		BATHROOM	16 A	12-2	20-SP
KITCHEN/DINING	2A, 2B	12-2	20-SP	RANGE	5B,7A	SEE NOTE #8		OPT G/DISP	9B	SEE NOTE #8	
WASHER	12A	12-2	20-SP	OPT GAS RANGE	15B	SEE NOTE #8		OPT SPA/WP/JAC	11A,B	SEE NOTE #8	
DRYER	5A,7B	SEE NOTE #8		FURNACE	6A,8A,B,10A,B	SEE NOTE #8		FREEZER	1.3A	SEE NOTE #8	
				OPT D/WASH	9A	SEE NOTE #8					
				SMOKE ALARM/CO	4B	SEE NOTE #8					

1421 SQ.FT. (STD PLAN "CONDITIONED")
N/A SQ.FT. (W/OPT. PORCH/RECESS "CONDITIONED")

Clayton Built	Model #: SAV28523A	Drawing #:
	Date: 10/07/23	Scale: N/A
Product Designer: J PIPES		28' x 52' HARDIN
ELECTRICAL PLAN-06		

20 lb ROOF LOAD SIDEWALL OPENING PIER LOAD 28' BOX WIDTH	SIDEWALL OPENING (FT) REQUIRED PIER LOAD (LBS)					
	3	4	5	6	8	10
	1175	1330	1485	1640	1950	2260

*FOR 30 lb & 40 lb ROOF LOAD REFER TO TABLES 7b & 7c IN THE INSTALLATION MANUAL.



PERIMETER SKIRTING MATERIAL AND FOUNDATION WALL DESIGNS ARE TO ALIGN WITH THE HOME'S EXTERIOR WALL PERIMETER. AREAS AROUND PORCHES OR RECESSED ENTRIES ARE TO BE SEPARATED TO PREVENT MOISTURE FROM ACCUMULATING BENEATH THE HOME.

GENERAL NOTES:

- PIER LOADS SHOWN ARE TO BE USED TO SIZE THE FOOTINGS BELOW THE MARRIAGEWALL FOR COLUMN SUPPORT PIERS. REFER TO TABLES 6b AND 6c IN THE INSTALLATION MANUAL FOR LOAD ON FRAME PIER FOOTINGS FOR HOMES THAT DO NOT REQUIRE PERIMETER BLOCKING. REFER TO TABLES 7b AND 7c IN THE INSTALLATION MANUAL FOR LOAD ON FRAME PIER FOOTINGS THAT REQUIRE PERIMETER BLOCKING. REFER TO TABLES 10 AND 10a TO DETERMINE FOOTING SIZE FOR ALL PIERS.
- REFER TO TABLE 9 FOR PIER CONFIGURATION AND MAXIMUM ALLOWABLE HEIGHTS. CROSS REFERENCE THE PIER HEIGHT WITH THE MAXIMUM ALLOWABLE FLOOR HEIGHT LISTED IN THE FRAME TIEDOWN CHARTS (TABLE 18, 19, AND 20).
- FLOOR WIDTH SHOWN IS FOR STANDARD PRODUCT ONLY. CONTACT THE MFG PLANT FOR SPECIFICATIONS OF OPTIONS ORDERED.
- SERVICE DROP LOCATIONS IDENTIFIED ARE APPROXIMATE.
- THE MAXIMUM SPACING FOR FRAME SUPPORT PIERS FOR 8" I-BEAMS IS 8 FEET, 10" & 12" I-BEAMS ARE 10 FEET.

PIER LEGEND	
□	= SUPPORT UNDER MATING OPENING
■	= SUPPORT AT MATING COLUMN
▨	= SUPPORT UNDER MATING WALL
■	= PIER PORCH/RECESSED ENTRY
□	= PIER MAIN BEAM
▬	= PIER PERIMETER
●	= TIE-DOWN SUPPORT (QTY PER TBL M, SEE DETAIL D-6 IN FOUND. PKG.)

SERVICE DROP LEGEND	
E	= ELECTRICAL DROP
W	= WATER INLET
D	= DWV PLUMBING DROP
G	= GAS INLET

20 psf Roof Live Load		
Column Pier #	Distance from Hitch	Pier Load (lbs)
1	20.417	3296
2	34.542	3296

WITH OPT PORCH		
20 psf Roof Live Load		
Column Pier #	Distance from Hitch	Pier Load (lbs)
1	0.667	1767
2	7.333	1767
3	28.417	3296
4	42.542	3296

1421 SQ.FT. (STD PLAN "CONDITIONED")
N/A SQ.FT. (W/OPT. PORCH/RECESS "CONDITIONED")

	Model #: 5AV28523A	Drawing #:
	Date: 10/07/23	Scale: N/A
Product Designer: J PIPES		28' x 52' HARDIN
PIER LOADS		

APPROVED

HWC

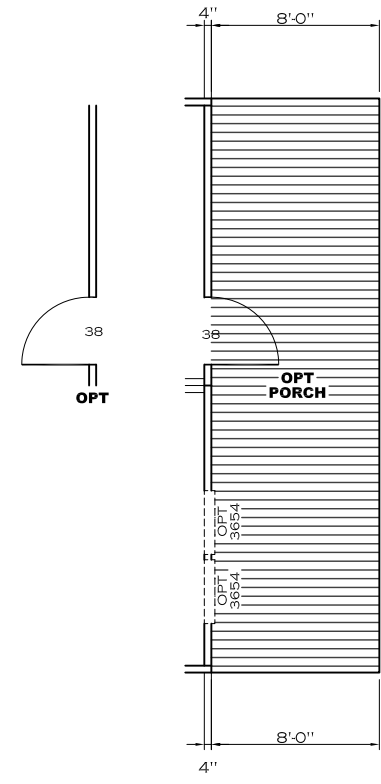
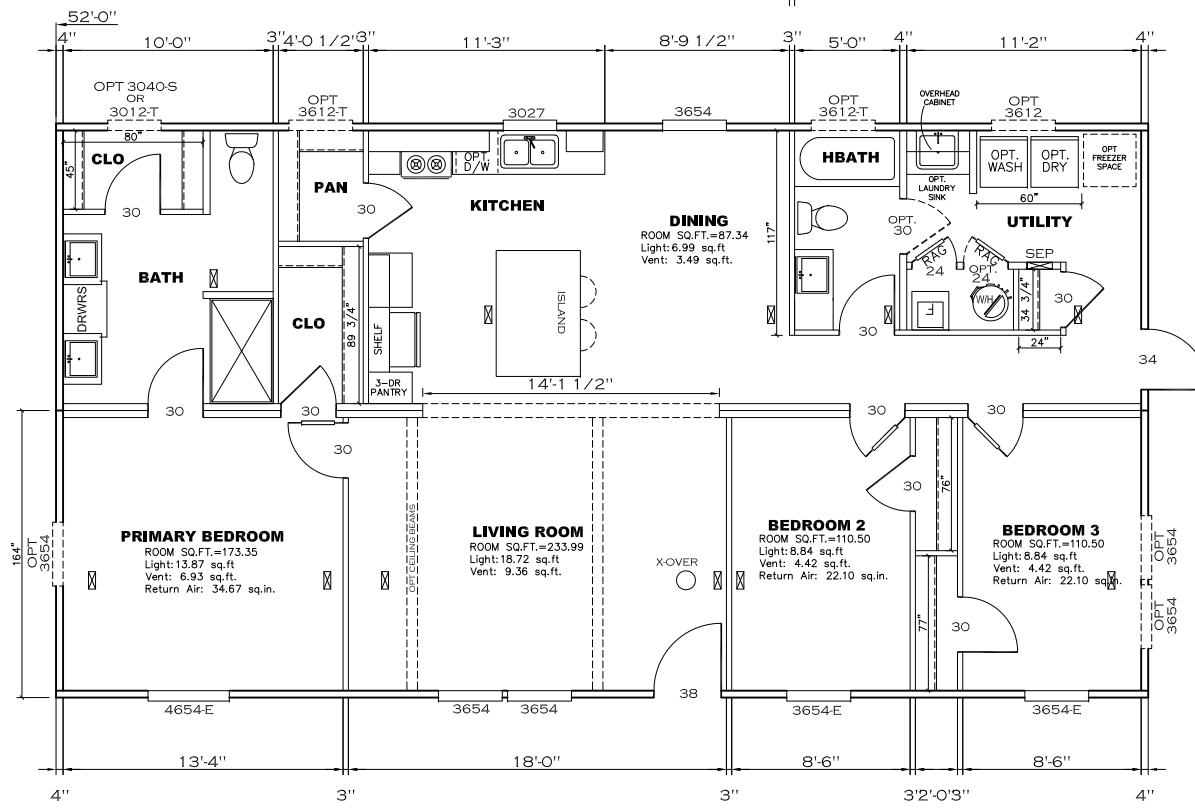
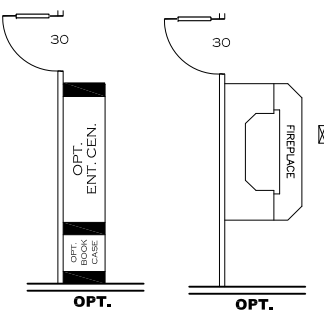
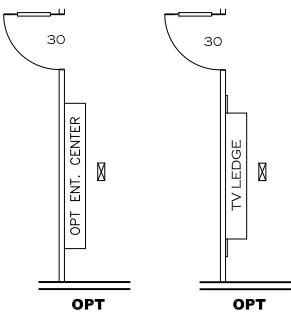
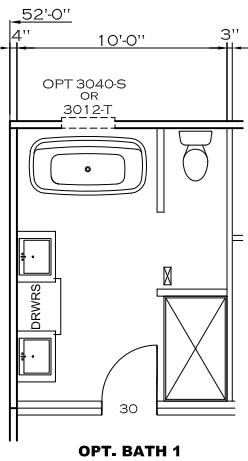
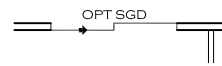
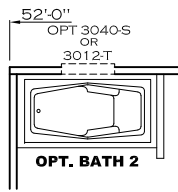
FEB 25 2025
REVISED

FP-28-5512

Federal Manufactured
Home Construction
And Safety Standards

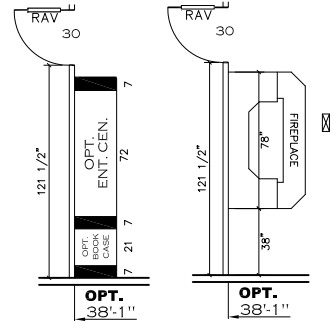
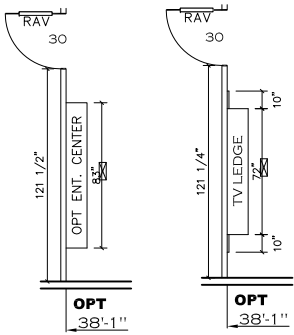
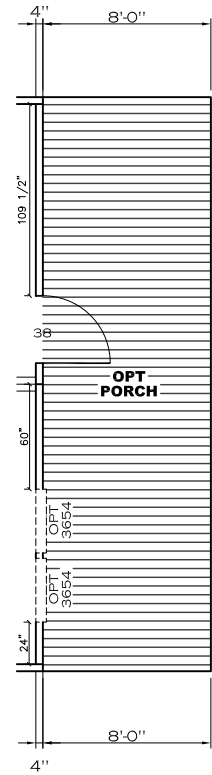
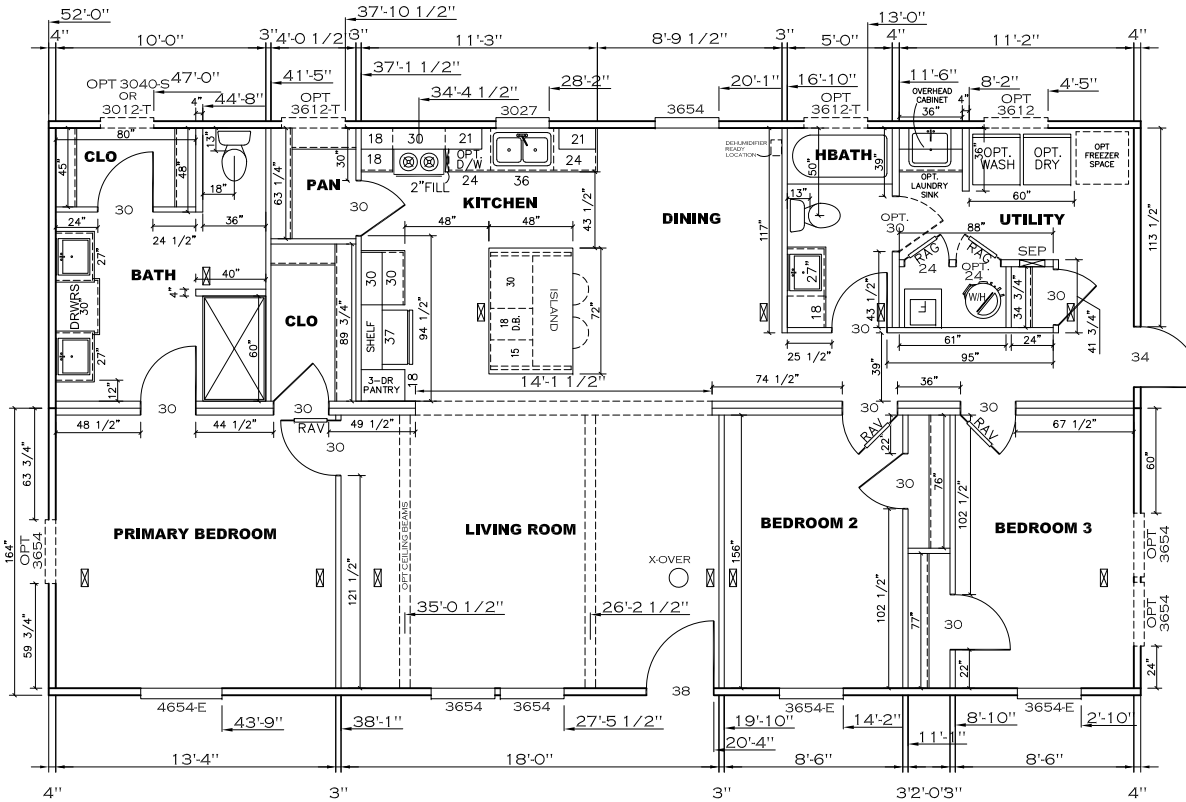
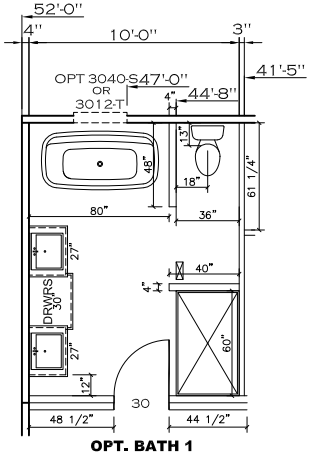
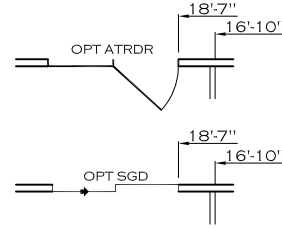
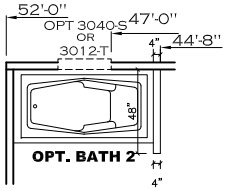
6

APPROVED

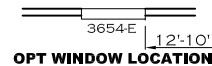


1421 SQ.FT. (STD PLAN "CONDITIONED")
N/A SQ.FT. (W/OPT. PORCH/RECESS "CONDITIONED")

Clayton Built	Model #: SAV28523A	Drawing #:
	Date: 10/07/23	Scale: N/A
Product Designer: J PIPES		28' x 52' HARDIN
FLOOR PLAN		

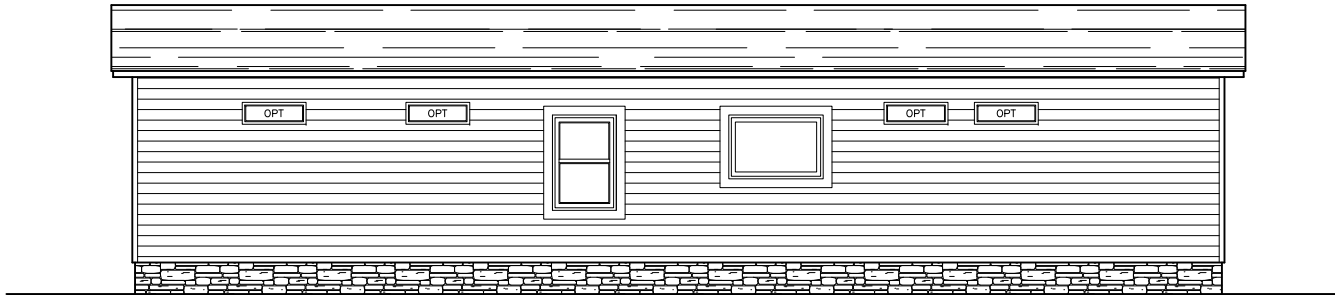


NOTE: TRANSOMS INSTALLED 6" A.F.F.
 MDL: 43.75 - 3/4"
 MDL: 23.75 - 1/2"
 GALLON VOLUME: 1.02

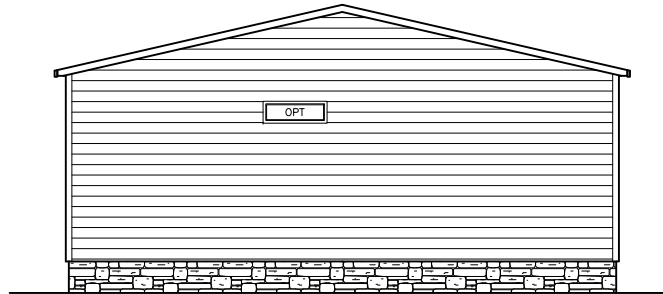


1421 SQ.FT. (STD PLAN "CONDITIONED")
 N/A SQ.FT. (W/OPT. PORCH/RECESS "CONDITIONED")

	Model #: SAV28523A	Drawing #:
	Date: 10/07/23	Scale: N/A
Product Designer: J PIPES		28' x 52' HARDIN
FLOOR PLAN		



REAR ELEVATION



LEFT SIDE ELEVATION



RIGHT SIDE ELEVATION



FRONT ELEVATION

1421 SQ.FT. (STD PLAN "CONDITIONED")
 N/A SQ.FT. (W/OPT. PORCH/RECESS "CONDITIONED")

CMH MANUFACTURING	Model #: SAV28523A	Drawing #:
	Date: 2/14/22	Scale: N/A 37M20G
Product Designer: E HARDWICK	28' x 52' HARDIN	
ELEVATION		

APPROVED

HWC

APPROVED

NOV 21 2023
REVISED

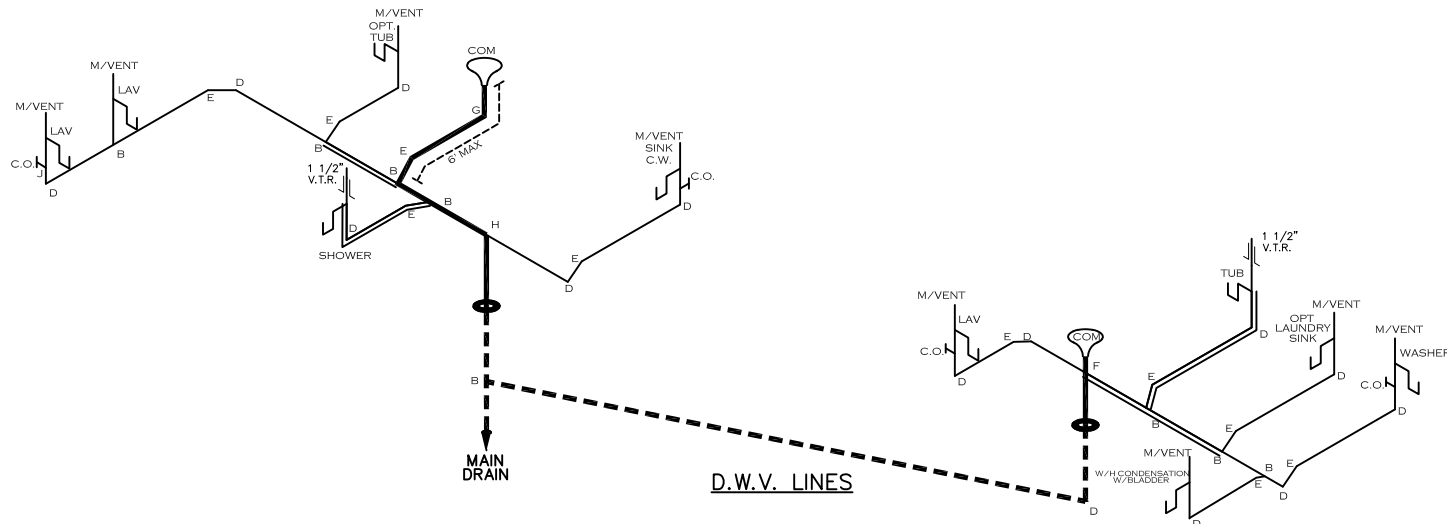
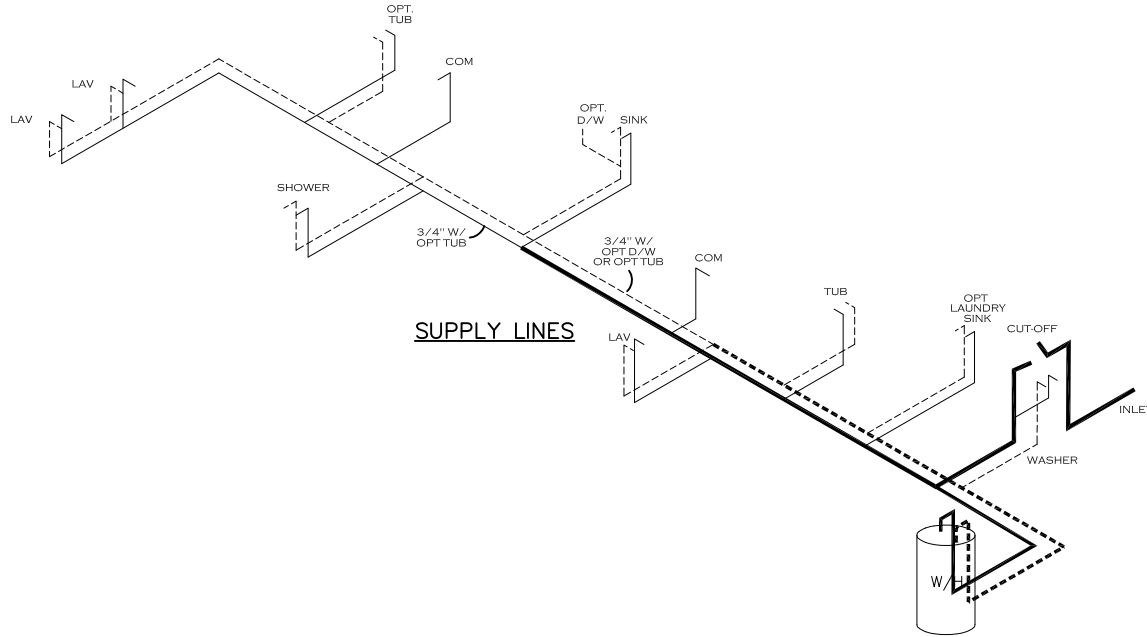
FP-28-5512

Federal Manufactured
Home Construction
And Safety Standards

6

NOTE:
DASHED LINES INDICATE HOT WATER
SOLID LINES INDICATE COLD WATER

— = 3/4"
— = 1/2"



LEGEND	
A	SHORT TURN T-Y
B	LONG TURN T-Y
C	1/4 BEND
D	LONG SWEEP 1/4 BEND
E	45 ELL
F	DBL. SANITARY TEE
G	4x3 CLOSET ELL
H	DOUBLE ELL
I	22 1/2" ELL
J	45° Y
K	LONG TURN STREET ELBOW
L	45 FTG ELL

DWV LINE SIZE CHART	
—	= 3"
—	= 2"
—	= 1 1/2"

1421 SQ.FT. (STD PLAN "CONDITIONED")
N/A SQ.FT. (W/OPT. PORCH/RECESS "CONDITIONED")

CMH MANUFACTURING	Model #: SAV28523A	Drawing #:
	Date: 10/07/2023	Scale: N/A
Product Designer: J PIPES		28' x 52' HARDIN
D.W.V. and Supply Lines		