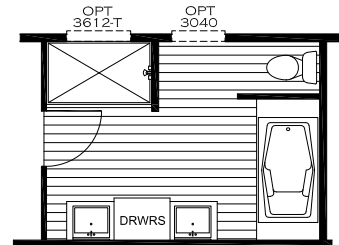
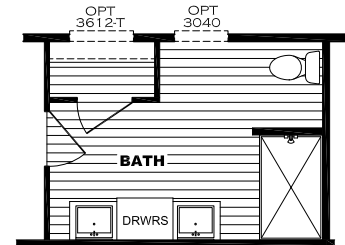


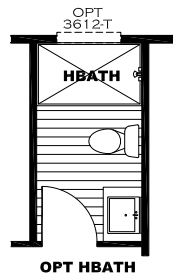
**OPT BATH 1**



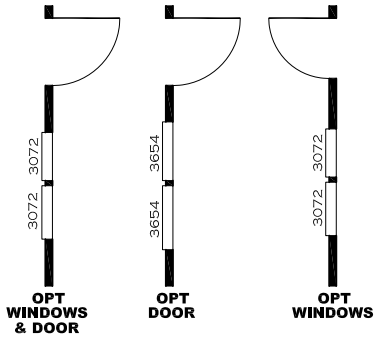
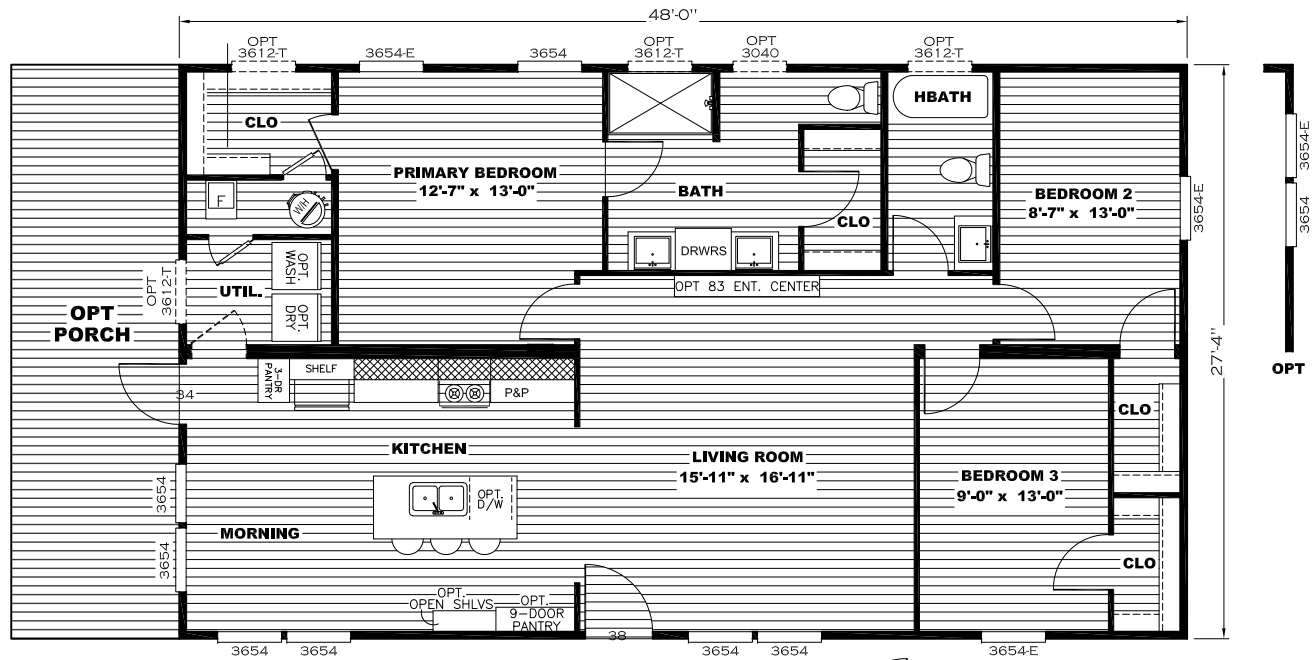
**OPT BATH 2**



**OPT BATH 3**



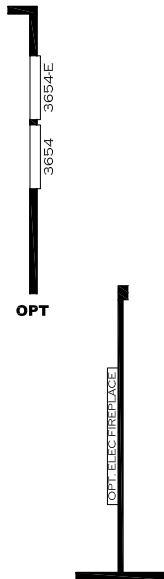
**OPT HBATH**



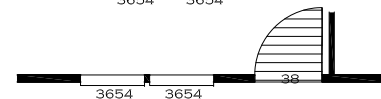
**OPT WINDOWS & DOOR**

**OPT DOOR**

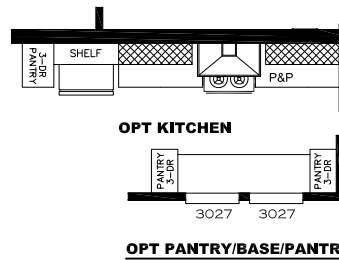
**OPT WINDOWS**



**OPT. ELEC FIREPLACE**



**OPT FRONT DOOR & WINDOW LOCATION**



**OPT KITCHEN**

**OPT PANTRY/BASE/PANTRY**

**OPT**

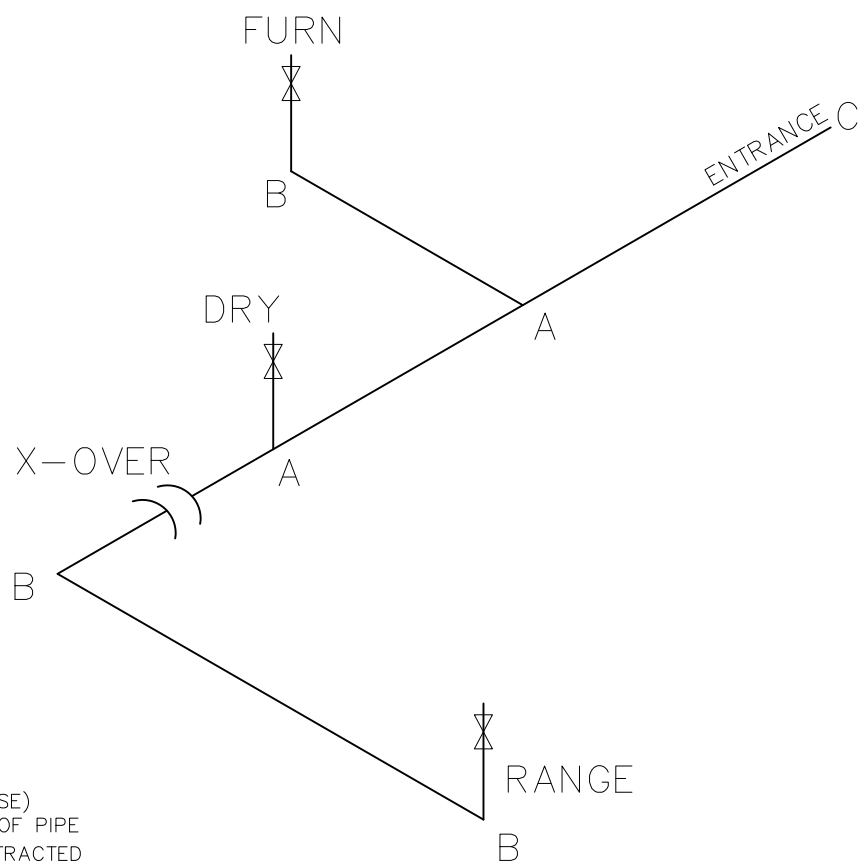
**OPT. ENT CTR**

**OPT**

**28 X 48 NORTH SHORE**  
 Drawing #:  
 37M205  
 Model #: SAV28483A

LEGEND		APPLIANCE BTU'S RATINGS MAX. INPUT	
SYM	FITTINGS		
A	TEE	FURNACE	65,000 BTU'S
B	90 ELL	W/H	N/A BTU'S
X	VALVE	RANGE	52,000 BTU'S
C	CAP	DRYER	22,000 BTU'S

MDL=25'



NOTES:

- 1) ALL PIPE IS 3/4" I.D.CAST (EXCEPT WHERE NOTED OTHERWISE)
- 2) MDL=MAX. DETERMINED LENGTH OF PIPE
- 3) FITTING MAY BE ADDED OR SUBTRACTED TO TRAVERSE VARIATIONS IN AXLE QUANTITY, PLACEMENT, AND FRAME TYPE.
- 4) INLET LOCATION MAY VARY TO STAY WITHIN MAX. DETERMINED LENGTH

GAS LINE SIZE CHART	
	= 1"
	= 3/4"

APPROVED

**HWG**  
JULY 18 2024  
REVISED  
FP-28-5511  
Federal Manufactured  
Home Construction  
And Safety Standards

APPROVED

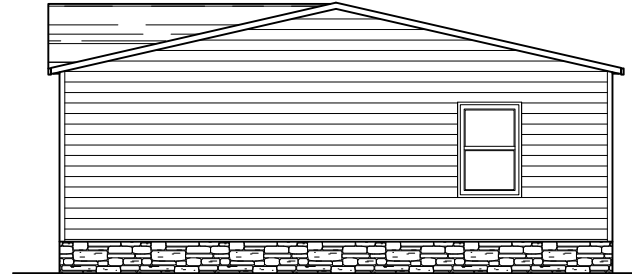
1312 SQ.FT. (STD PLAN "CONDITIONED")	
N/A SQ.FT. (W/OPT. PORCH/RECESS "CONDITIONED")	
	Model #: SAV28483A Date: 7/27/23
Product Designer: J PIPES	Scale: NTS Drawing #: 37M205
28 X 48 NORTH SHORE	
<b>GAS LINE DETAIL</b>	



REAR ELEVATION



LEFT ELEVATION



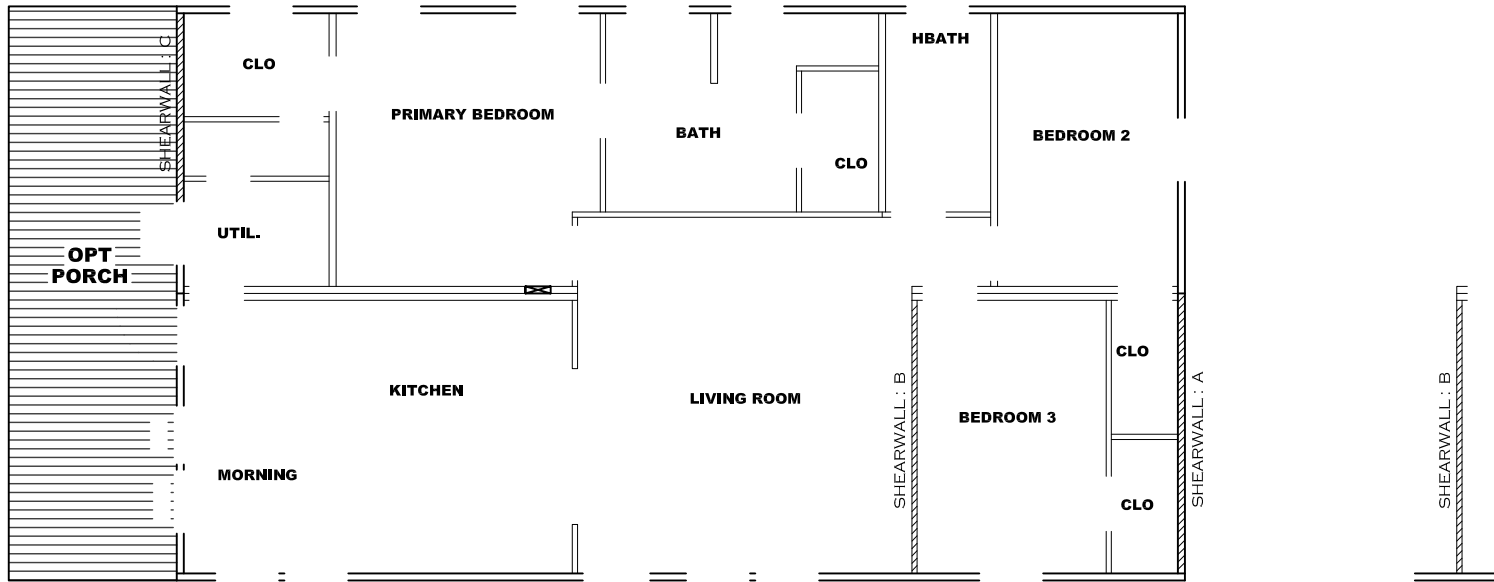
RIGHT ELEVATION



FRONT ELEVATION

1312 SQ.FT. (STD PLAN "CONDITIONED")  
 N/A SQ.FT. (W/OPT. PORCH/RECESS "CONDITIONED")

<b>CMH</b> MANUFACTURING	Model #: SAV28483A	Drawing #:
	Date: 1/28/22	Scale: NTS
Product Designer: E HARDWICK	28 X 48 NORTH SHORE	
ELEVATION		



**Model # 37m205**

Box Width = 164 " Double wide Minimum Joist Spacing 16 "  
 Box Length = 48 ft. 99.5" 12" MIN.IBEAM No Offset Box  
 No Skylights No Origami Dormer  
 No Porches No Sunken Floor  
 Joist Size = #2 spf 2x6 Lags 9Mx3" No Parapet Roof

**Version R13.19**

**Wind Zone 1 Standard Roof** Ceiling board only [152 plf] Chords: 2x4 SPF #3 96 inch sidewall  
 Diaphragm Construction: Top Plate spliced w/2x4 MCP & 2x3 SPF Rail spliced w/ 2x4 MCP

Shearwall	Dist./ Hitch	Length	PLF	# of Joists	Lags	Notes
A	0'	32"	162	2	1/1	*
B	12.88'	108"	162	2	2/1	
C	48'	80"	162	2	1/1	

**Wind Zone 2 Standard Roof** (3/8" sheathing only with 15 gax 1.5" at 5"/10" oc. 96 inch sidewall  
 Diaphragm Construction: (197 plf) Chords: 2x4 SPF #3 Top Plate spliced w/2x4 MCP & 2x3 SPF Rail spliced w/ 2x4 MCP

Shearwall	Dist./ Hitch	Length	PLF	# of Joists	Lags	Notes
A	0'	76"	162	2	1/1	*
B	12.88'	Full	324	2	2/2	
C	48'	104"	425	5	4/2	

**Wind Zone 3 Standard Roof** (3/8" sheathing only with 15 gax 1.5" at 5"/10" oc. 96 inch sidewall  
 Diaphragm Construction: (197 plf) Chords: 2x4 SPF #3 Top Plate spliced w/2x4 MCP & 2x3 SPF Rail spliced w/ 2x4 MCP

Shearwall	Dist./ Hitch	Length	PLF	# of Joists	Lags	Notes
A	0'	92"	162	2	1/1	*
B	12.88'	128"	425	2	4/1	
C	48'	104"	425	5	4/2	

**Wind Zone 1 Standard Roof** (3/8" sheathing only with 15 gax 1.5" at 5"/10" oc. 96 inch sidewall  
 Diaphragm Construction: (197 plf) Chords: 2x4 SPF #3 Top Plate spliced w/2x4 MCP & 2x3 SPF Rail spliced w/ 2x4 MCP

Shearwall	Dist./ Hitch	Length	PLF	# of Joists	Lags	Notes	% over
A	0'	108"	162	2	2/1	*	
C	48'	107.5"	162	2	2/1		0.47

\* Denotes that indicated shearwall is over full depth/width front steel chassis header.

OPT. ELEC FIREPLACE

APPROVED

**HWC**

FEB 17 2025  
 REVISED

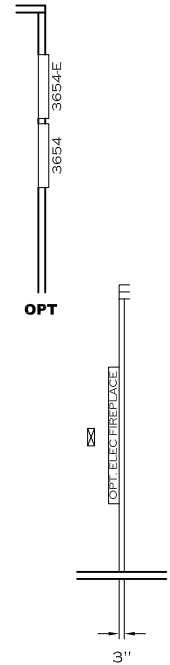
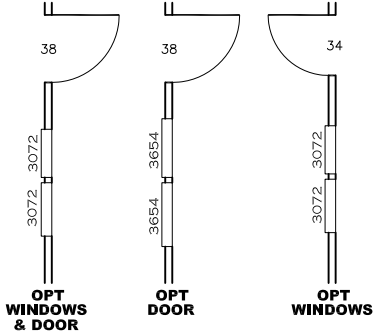
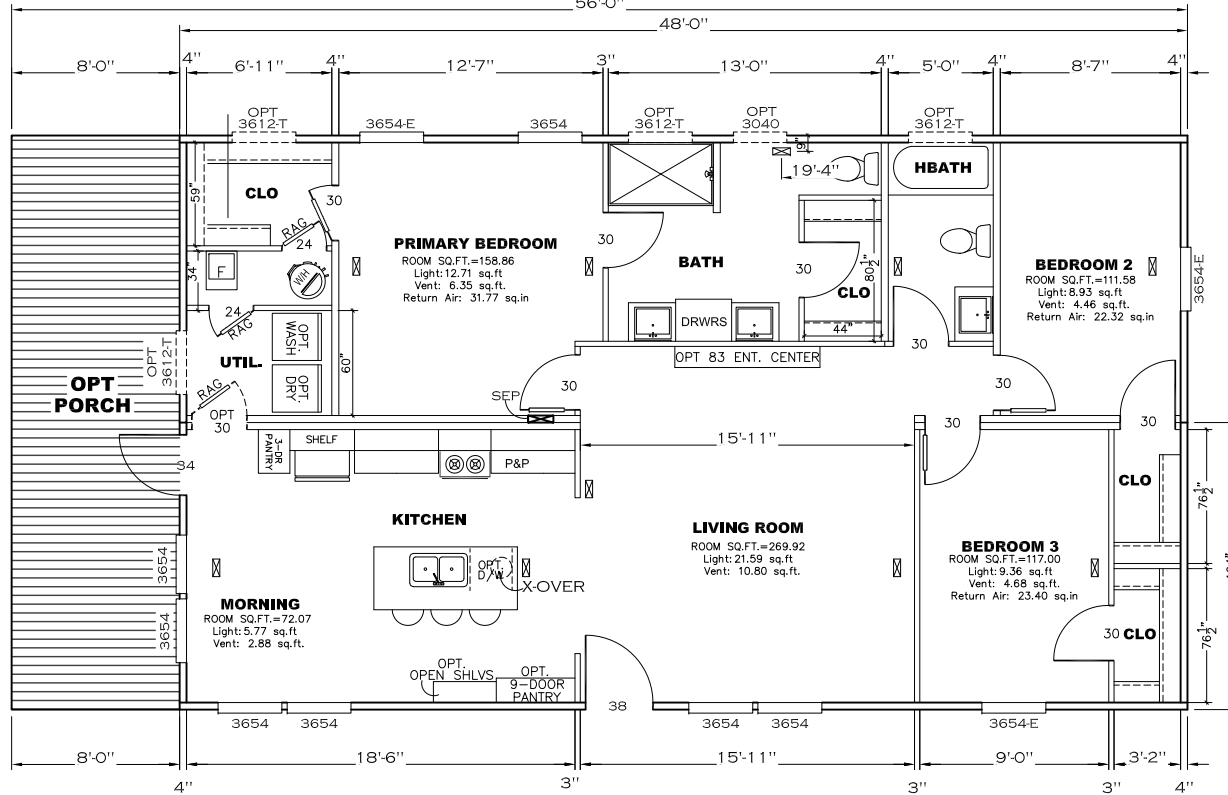
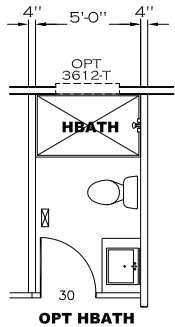
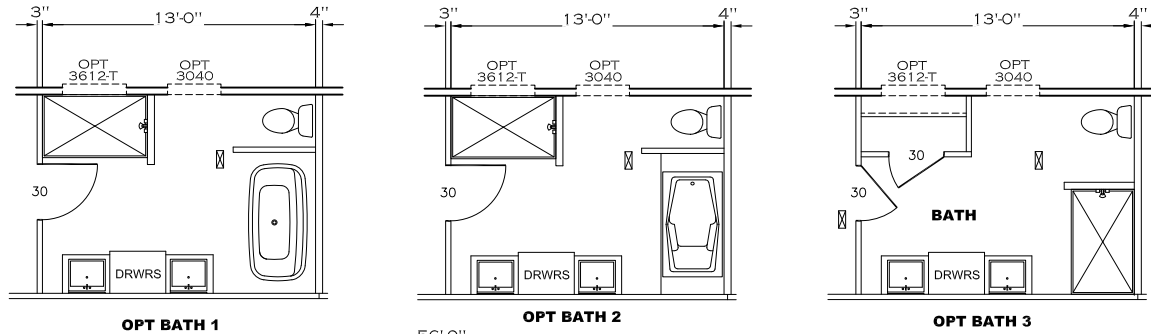
FP-28-5511

Federal Manufactured  
 Home Construction  
 And Safety Standards

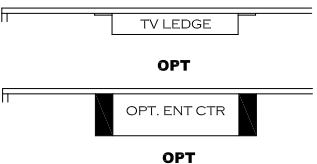
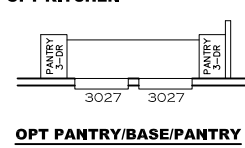
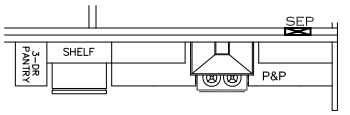
APPROVED

1312 SQ.FT. (STD PLAN "CONDITIONED")  
 N/A SQ.FT. (W/OPT. PORCH/RECESS "CONDITIONED")

<b>Clayton Built</b>	Model #: SAV28483A	Drawing #: 37M205
Date: 7/27/23	Scale: NTS	
Product Designer: J PIPES	28 X 48 NORTH SHORE	
<b>SHEARWALL PAGE</b>		



NOTE: TRANSOM INSTALLED 6" A.F.F.



**APPROVED**

**HWC**

**APPROVED**

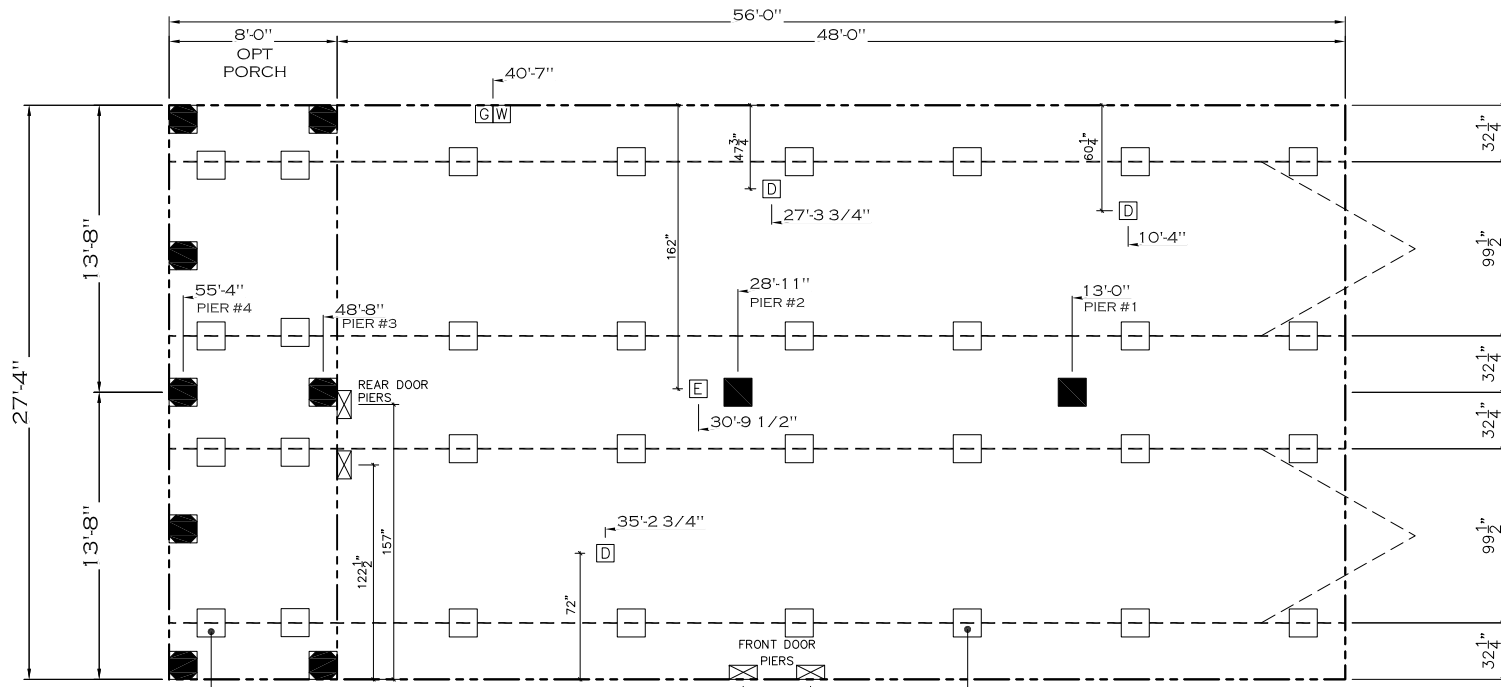
MAR 17 2025  
REVISED

FP-28-5511  
Federal Manufactured  
Home Construction  
And Safety Standards

6

1312 SQ.FT. (STD PLAN "CONDITIONED")  
N/A SQ.FT. (W/OPT. PORCH/RECESS "CONDITIONED")

<b>Clayton Built</b>	Model #: SAV28483A	Drawing #:
	Date: 7/27/23	Scale: NTS
Product Designer: J PIPES		28 X 48 NORTH SHORE
<b>FLOOR PLAN</b>		



PERIMETER SKIRTING MATERIAL AND FOUNDATION WALL DESIGNS ARE TO ALIGN WITH THE HOME'S EXTERIOR WALL PERIMETER AREAS AROUND PERIMETER SUPPORT PIERS RECESSED ENTRIES ARE TO BE SEPARATED TO PREVENT MOISTURE FROM ACCUMULATING BENEATH THE HOME.

TYPICAL FRAME SUPPORT PIERS

**SERVICE DROP LEGEND**

- E = ELECTRICAL DROP
- W = WATER INLET
- D = DWV PLUMBING DROP
- G = GAS INLET

**PIER LEGEND**

- = SUPPORT UNDER MATING OPENING
- = SUPPORT AT MATING COLUMN
- = SUPPORT UNDER MATING WALL
- = PIER PORCH/RECESSED ENTRY
- = PIER MAIN BEAM
- = PIER PERIMETER

**GENERAL NOTES:**

1. PIER LOADS SHOWN ARE TO BE USED TO SIZE THE FOOTINGS BELOW THE MARRIAGEWALL FOR COLUMN SUPPORT PIERS. REFER TO TABLES 6b AND 6c IN THE INSTALLATION MANUAL FOR LOAD ON FRAME PIER FOOTINGS FOR HOMES THAT DO NOT REQUIRE PERIMETER BLOCKING. REFER TO TABLES 7b AND 7c IN THE INSTALLATION MANUAL FOR LOAD ON FRAME PIER FOOTINGS THAT REQUIRE PERIMETER BLOCKING. REFER TO TABLES 10 AND 10a TO DETERMINE FOOTING SIZE FOR ALL PIERS.
2. REFER TO TABLE 9 FOR PIER CONFIGURATION AND MAXIMUM ALLOWABLE HEIGHTS. CROSS REFERENCE THE PIER HEIGHT WITH THE MAXIMUM ALLOWABLE FLOOR HEIGHT LISTED IN THE FRAME TIEDOWN CHARTS (TABLE 18, 19, AND 20).
3. FLOOR WIDTH SHOWN IS FOR STANDARD PRODUCT ONLY. CONTACT THE MFG PLANT FOR SPECIFICATIONS OF OPTIONS ORDERED.
4. SERVICE DROP LOCATIONS IDENTIFIED ARE APPROXIMATE.
5. THE MAXIMUM SPACING FOR 8" I-BEAMS IS 8 FEET, 10" & 12" I-BEAMS ARE 10 FEET.

**WITH OPT PORCH**

20 psf Roof Live Load		
Column Pier #	Distance from Hitch	Pier Load (lbs)
1	13	3663
2	28.917	3663
3	48.667	1767
4	55.333	1767

20 psf Roof Live Load		
Column Pier #	Distance from Hitch	Pier Load (lbs)
1	13	3663
2	28.917	3663

20 lb ROOF LOAD SIDEWALL OPENING PIER LOAD 28' BOX WIDTH	SIDEWALL OPENING (FT) REQUIRED PIER LOAD (LBS)					
	3	4	5	6	8	10
	1175	1330	1485	1640	1950	2260

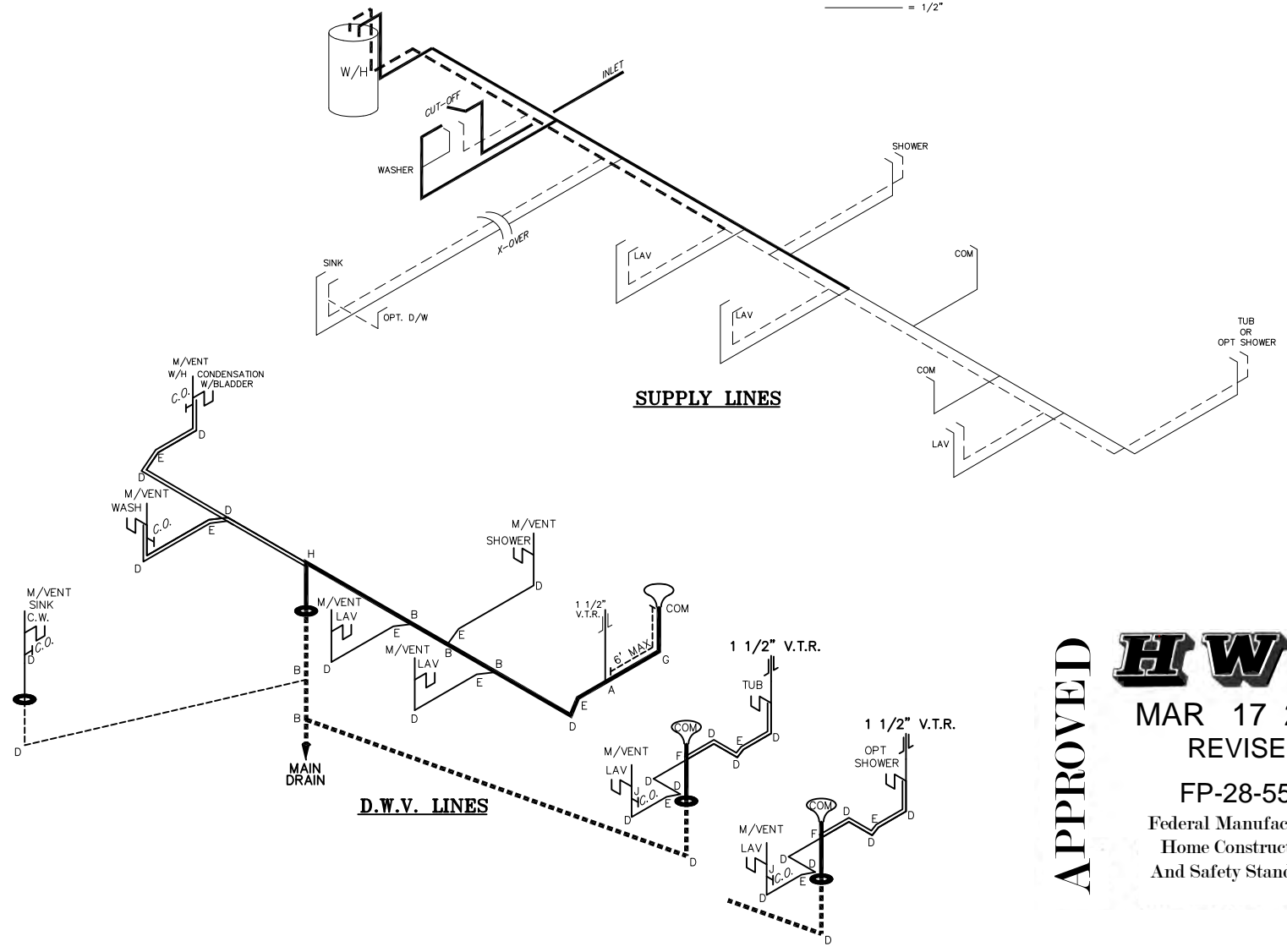
\*FOR 30 lb & 40 lb ROOF LOAD REFER TO TABLES 7b & 7c IN THE INSTALLATION MANUAL.

1312 SQ.FT. (STD PLAN "CONDITIONED")  
N/A SQ.FT. (W/OPT. PORCH/RECESS "CONDITIONED")

<b>Clayton Built</b>	Model #: SAV28483A	Drawing #: 37M205
Date: 7/27/23	Scale: NTS	
Product Designer: J PIPES	28 X 48 NORTH SHORE	
<b>PIER LOADS</b>		

NOTE:  
 DASHED LINES INDICATES HOT WATER  
 SOLID LINES INDICATES COLD WATER

———— = 3/4"  
 ———— = 1/2"



**SUPPLY LINES**

**D.W.V. LINES**

**APPROVED**



**MAR 17 2025**  
**REVISED**

**FP-28-5511**  
 Federal Manufactured  
 Home Construction  
 And Safety Standards

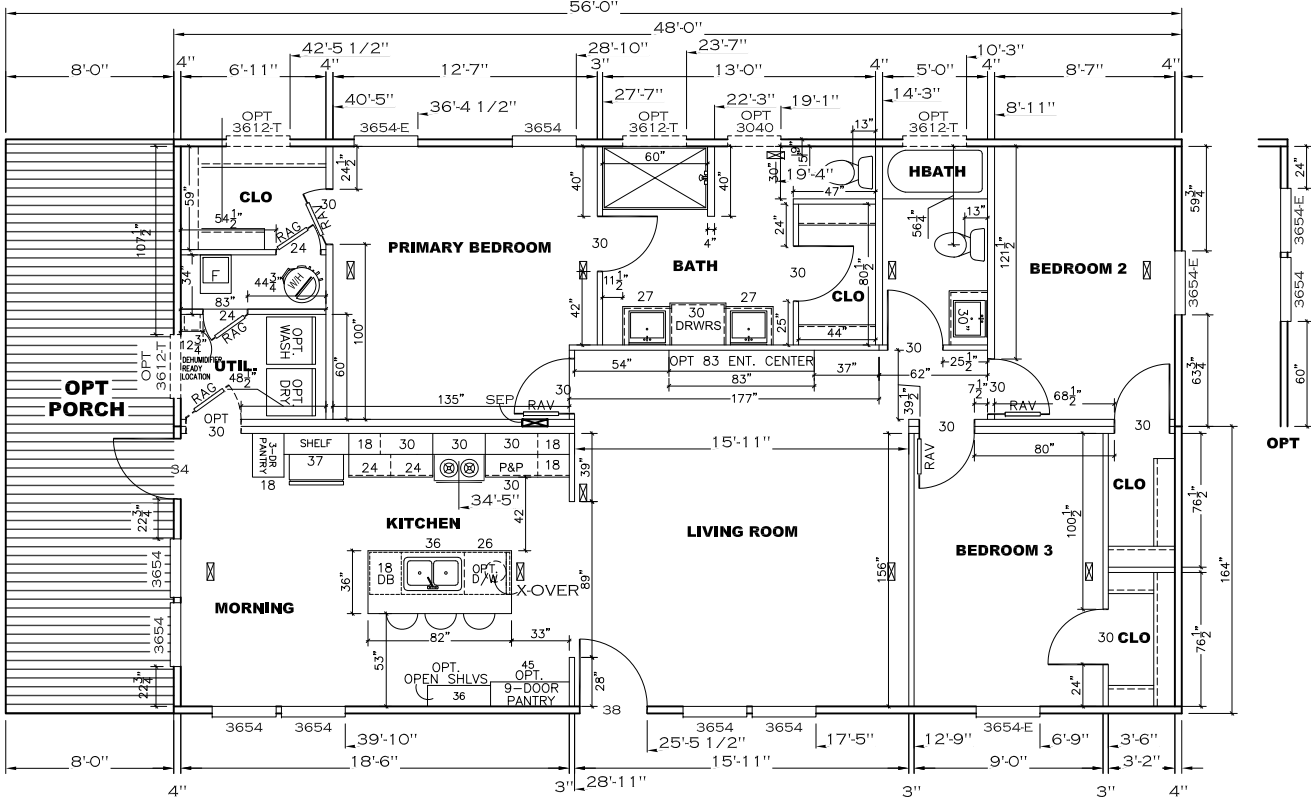
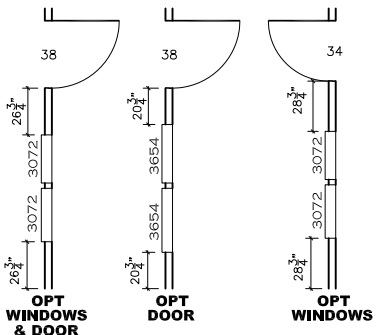
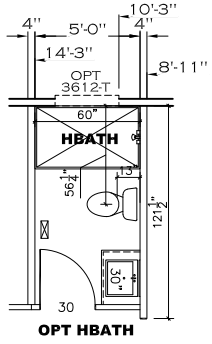
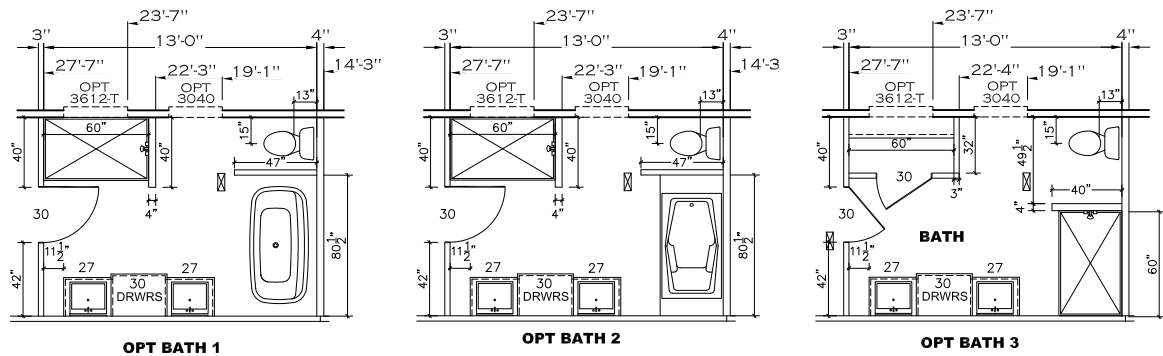
**APPROVED**

LEGEND	
A	SHORT TURN T-Y
B	LONG TURN T-Y
C	1/4 BEND
D	LONG SWEEP 1/4 BEND
E	45° ELL
F	DBL. SANITARY TEE
G	4x3 CLOSET ELL
H	DOUBLE ELL
I	22 1/2° ELL
J	45° Y
K	LONG TURN STREET ELBOW
L	45° FTG ELL

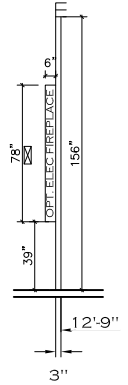
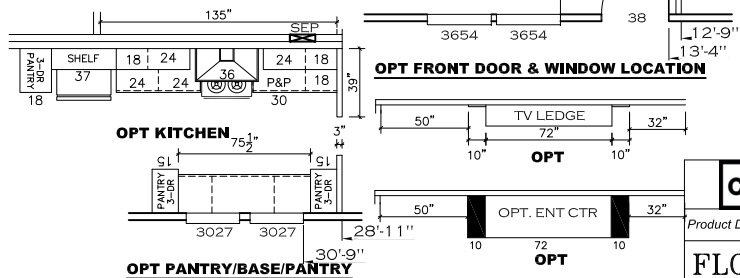
DWV LINE SIZE CHART	
————	= 3"
————	= 2"
————	= 1 1/2"

1312 SQ.FT. (STD PLAN "CONDITIONED")  
 N/A SQ.FT. (W/OPT. PORCH/RECESS "CONDITIONED")

<b>Clayton Built</b>	Model #: SAV28483A	Drawing #:
	Date: 7/27/23	Scale: NTS
Product Designer: J PIPES		28 X 48 NORTH SHORE
<b>D.W.V. and Supply Lines</b>		



NOTE: TRANSOM INSTALLED 6" A.F.F.



1312 SQ.FT. (STD PLAN "CONDITIONED")  
 N/A SQ.FT. (W/OPT. PORCH/RECESS "CONDITIONED")

<b>Clayton Built</b>	Model #: SAV28483A	Drawing #:
	Date: 7/27/23	Scale: NTS
Product Designer: J PIPES	28 X 48 NORTH SHORE	

**FLOOR PLAN**