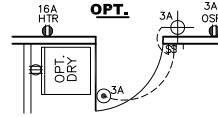
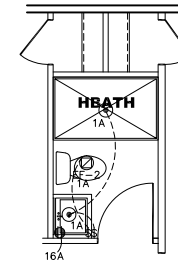


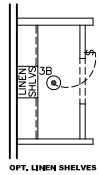
OPT CLOSET



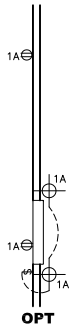
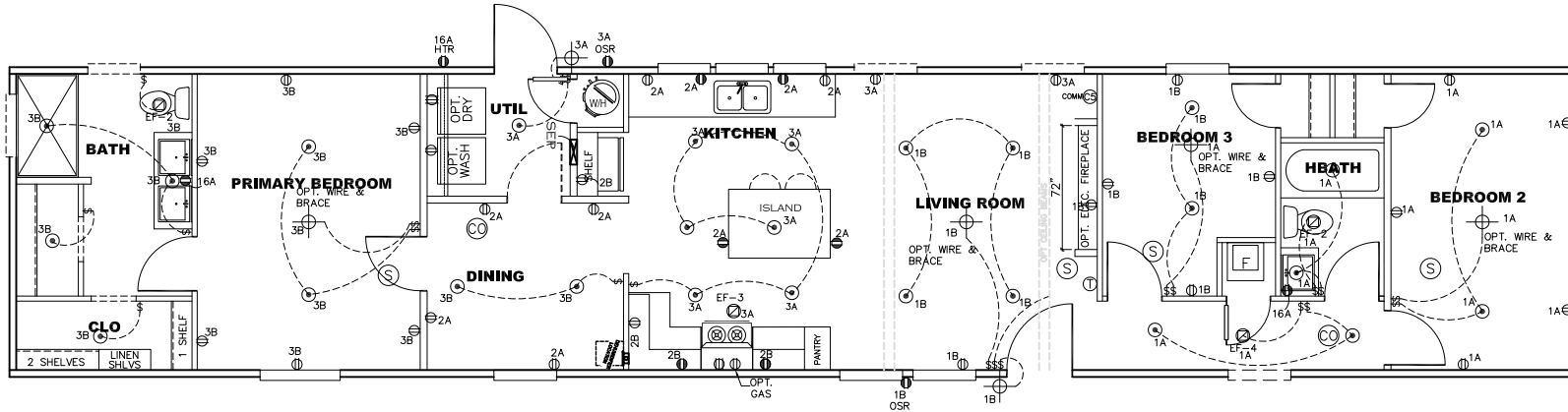
OPT.



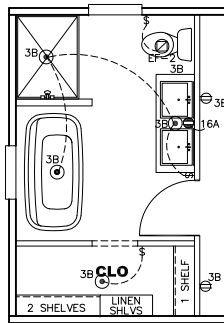
OPT.



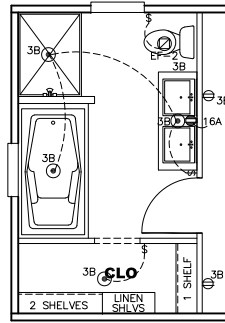
OPT. LINEN SHELVES



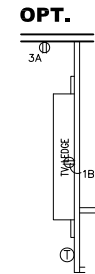
OPT



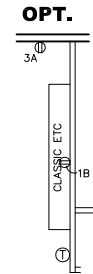
BATH OPT. 1



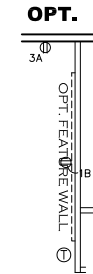
BATH OPT. 2



OPT.



OPT.



OPT.

NOTES:

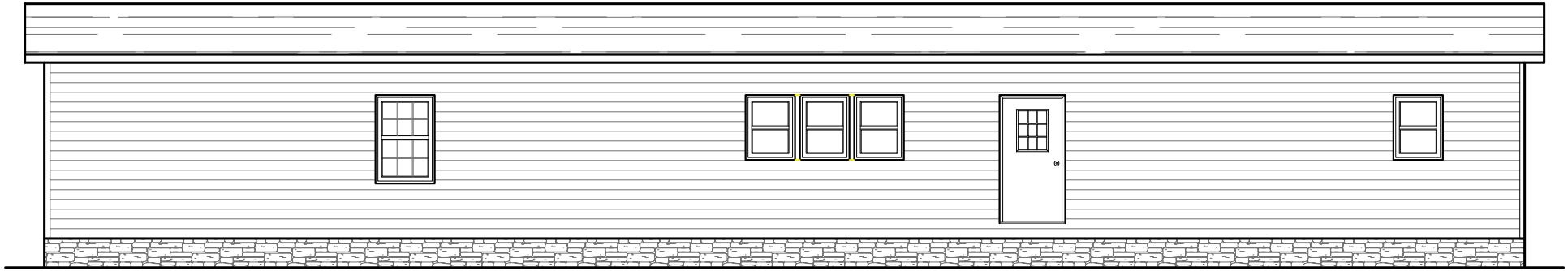
1. ALL CIRCUITS SHOWN ARE FOR REFERENCE AND MAY BE CHANGED BASED ON OPTIONAL COMPONENTS INSTALLED IN THE HOME.
2. REFER TO DAPIA MANUAL FOR SYMBOL CHART.
3. EITHER LIGHT OR RECEPTACLE MUST CONNECT TO SWITCH.
4. EF-1= 50 CFM EXHAUST FAN REQUIRED FOR THERMAL ZONE I & II MAY USE FAN OR WINDOW W/1.5 SQ. FT. OPENABLE GLASS.
5. EF-2= 50 CFM EXHAUST FAN REQUIRED THERMAL ZONE I, II, AND III.
6. EF-3= 100 CFM RANGE EXHAUST FAN, SWITCH AT HOOD.
7. EF-4= WHOLE HOUSE VENTILATION REQUIREMENTS PER DAPIA MANUAL.
8. REFER TO DAPIA MANUAL OR THE MFG. INSTALLATION INSTRUCTIONS FOR PROPER WIRE SIZE AND BREAKER SIZE FOR SPECIFIC APPLIANCE AND MODEL BEING INSTALLED.
9. ALL SMOKE ALARMS TO BE LOCATED ON THE CEILING.
10. CARBON MONOXIDE ALARMS ARE ONLY REQUIRED WHEN HOME HAS EITHER FUEL BURNING APPLIANCES, IS GARAGE READY OR IS BASEMENT READY. REFERENCE DAPIA MANUAL FOR ADDITIONAL INFORMATION.
11. DIMENSIONS SHOWN ON PRINT ARE APPROXIMATE AND TO BE USED ONLY AS A GUIDELINE.

CIRCUIT	CIRCUIT #	WIRE	BREAKER	CIRCUIT	CIRCUIT #	WIRE	BREAKER	CIRCUIT	CIRCUIT #	WIRE	BREAKER
LIGHT/RECEP	1A,1B,3A,3B	14-2	15-SP	WATER HEATER	4A,6B	SEE NOTE #8		BATHROOM	16A	12-2	20-SP
KITCHEN/DINING	2A,2B	12-2	20-SP	RANGE	5B,7A	SEE NOTE #8		OPT G/DISP	9B	SEE NOTE #8	
WASHER	12A	12-2	20-SP	OPT GAS RANGE	15B	SEE NOTE #8		OPT SPA/WP/JAC	11A,B	SEE NOTE #8	
DRYER	5A,7B	SEE NOTE #8		FURNACE	6A,8A,B,10A,B	SEE NOTE #8		FREEZER	N/A	SEE NOTE #8	
				OPT D/WASH	9A	SEE NOTE #8					
				SMOKE ALARM/CO	4B	SEE NOTE #8					

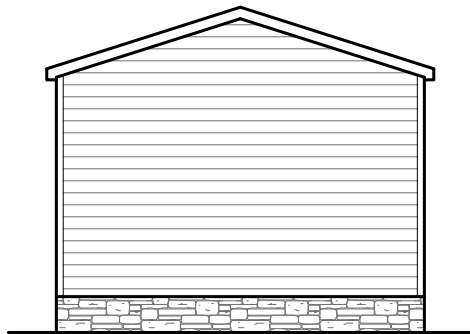
1140 SQ.FT. (STD PLAN "CONDITIONED")
 N/A SQ.FT. (W/OPT. PORCH/RECESS "CONDITIONED")

	Model #: SAV16763T	Drawing #:
	Date: 2/6/2026	Scale: NT5
Product Designer: Jessica Lambert		I 6'x76' The Driftwood

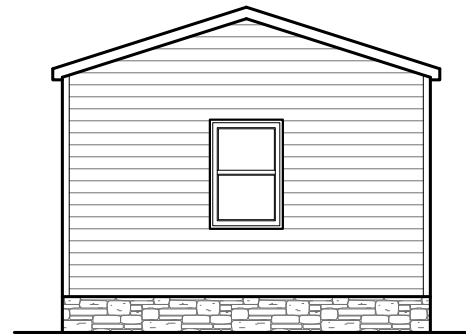
ELECTRICAL PLAN-06



REAR ELEVATION



LEFT ELEVATION



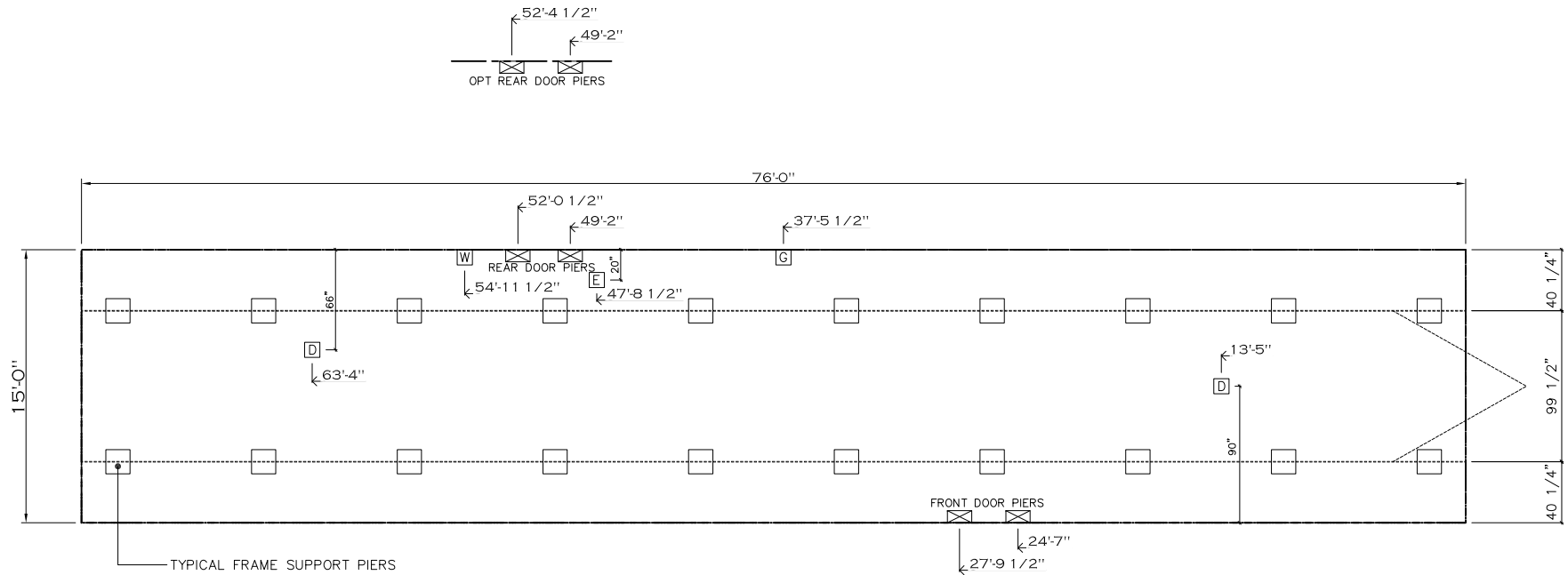
RIGHT ELEVATION



FRONT ELEVATION

1140 SQ.FT. (STD PLAN "CONDITIONED")
 N/A SQ.FT. (W/OPT. PORCH/RECESS "CONDITIONED")

Clayton Built	Model #: SAV16763T	Drawing #:
	Date: 2/6/2026	Scale: NTS 375172
Product Designer: Jessica Lambert		16x76' The Driftwood
ELEVATION		



20 lb ROOF LOAD SIDEWALL OPENING PIER LOAD 16' BOX WIDTH	SIDEWALL OPENING (FT) REQUIRED PIER LOAD (LBS)					
	3	4	5	6	8	10
	1244	1413	1581	1750	2088	2425

*FOR 30 lb & 40 lb ROOF LOAD REFER TO TABLES 7 & 7a IN THE INSTALLATION MANUAL.

SERVICE DROP LEGEND

- E = ELECTRICAL DROP
- W = WATER INLET
- D = DWV PLUMBING DROP
- G = GAS INLET

PIER LEGEND

- = PIER MAIN BEAM
- = PIER PERIMETER
- = PIER PORCH/RECESSED ENTRY

NOTES:

1. REFER TO TABLES 6 AND 6a IN THE INSTALLATION MANUAL FOR LOAD ON FRAME PIER FOOTINGS FOR HOMES THAT DO NOT REQUIRE PERIMETER BLOCKING. REFER TO TABLES 7 AND 7a IN THE INSTALLATION MANUAL FOR LOAD ON FRAME PIER FOOTINGS FOR HOMES THAT REQUIRE PERIMETER BLOCKING. REFER TO TABLES 10 AND 10a TO DETERMINE FOOTING SIZE FOR ALL PIERS.
2. REFER TO TABLE 9 FOR PIER CONFIGURATION AND MAXIMUM ALLOWABLE HEIGHTS. CROSS REFERENCE THE PIER HEIGHT WITH THE MAXIMUM ALLOWABLE FLOOR HEIGHT LISTED IN THE FRAME TIEDOWN CHARTS (TABLE 18, 19, AND 20).
3. THE MAXIMUM SPACING FOR 8" I-BEAMS IS 8 FEET, 10" & 12" I-BEAMS IS 10 FEET.
4. SERVICE DROP LOCATIONS IDENTIFIED ARE APPROXIMATE.
5. FLOOR WIDTH SHOWN IS FOR STANDARD PRODUCT ONLY. CONTACT THE MFG FACILITY FOR SPECIFICATIONS OF OPTIONS ORDERED.

1140 SQ.FT. (STD PLAN "CONDITIONED")
N/A SQ.FT. (W/OPT. PORCH/RECESS "CONDITIONED")

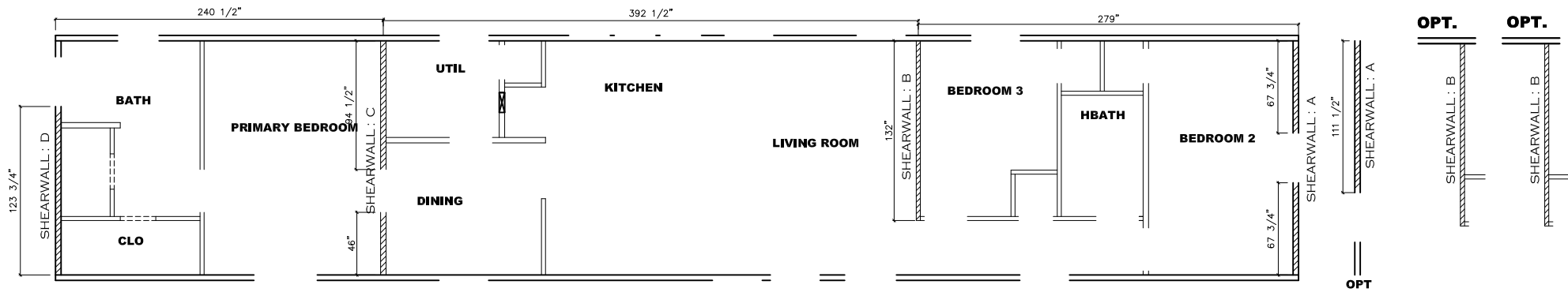
Clayton Built	Model #: 5AV16763T	Drawing #:
	Date: 2/6/2026	Scale: NTS 375172
Product Designer: Jessica Lambert		16x76' The Driftwood
FRAME PIERS		

"THE DRIFTWOOD"



Model #: SAV16763T

DRAWING # 37S172



Model # 37S172 Minimum Joist Spacing 16 "

Box Width = 180 " Single wide No Offset Box
 Box Length = 76 ft. 99.5" 12" MIN.IBEAM No Clerestory
 No Skylights No Origami Dormer
 No Porches No Sunken Floor
 Joist Size = #2 sp 2x6 Lags 9Mx3" No Parapet Roof

Version R14.02

Wind Zone 1 Standard Roof		7/16" Rated Sheathing and Ceiling Board with 15 ga staple @ 6/12 (286,315) Chords: 7. 2x4 SPF #3 Top Plate spliced w/2x4 MCP & 2x3 SPF Rail spliced w/ 2x4 MCP					96 inch sidewall		
Diaphragm Construction:		Block Dist. X=0'							
Shearwall	Dist./ Hitch	Length	PLF	# of Joists	Lags	Notes	SW1/SW2		
A	0'	135.5"	162	2	1/1	Split Shearwall *	67.75/67.75		
B	23.25'	128"	162	2	2/1				
C	55.96'	140.5"	162	2	2/2	Split Shearwall	94.5/46		
D	76'	48"	162	2	1/1				
Wind Zone 2 Standard Roof		7/16" Rated Sheathing and Ceiling Board with 15 ga staple @ 6/12 (286,315) Chords: 7. 2x4 SPF #3 Top Plate spliced w/2x4 MCP & 2x3 SPF Rail spliced w/ 2x4 MCP					96 inch sidewall		
Diaphragm Construction:		Block Dist. X=0'							
Shearwall	Dist./ Hitch	Length	PLF	# of Joists	Lags	Notes	SW1/SW2	% over	
A	0'	135.5"	162	2	2/2	Split Shearwall *	67.75/67.75	0.37	
B	23.25'	128"	430	3	4/1				
C	55.96'	140.5"	430	3	4/4	Split Shearwall	94.5/46		
D	76'	116"	162	2	2/1				
Wind Zone 3 Standard Roof		7/16" Rated Sheathing and Ceiling Board with 15 ga staple @ 6/12 (286,315) Chords: 7. 2x4 SPF #3 Top Plate spliced w/2x4 MCP & 2x3 SPF Rail spliced w/ 2x4 MCP					96 inch sidewall		
Diaphragm Construction:		Block Dist. X=0'							
Shearwall	Dist./ Hitch	Length	PLF	# of Joists	Lags	Notes	SW1/SW2		
A	0'	135.5"	250	2	2/2	Split Shearwall *	67.75/67.75		
B	23.25'	128"	520	4	5/2				
C	55.96'	140.5"	430	3	4/4	Split Shearwall	94.5/46		
D	76'	120"	250	2	2/1				

* Denotes that indicated shearwall is over full depth/width front steel chassis header.

Model # 37S172-OPT. HITCH WINDOW Minimum Joist Spacing 16 "

Box Width = 180 " Single wide No Offset Box
 Box Length = 76 ft. 99.5" 12" MIN.IBEAM No Clerestory
 No Skylights No Origami Dormer
 No Porches No Sunken Floor
 Joist Size = #2 sp 2x6 Lags 9Mx3" No Parapet Roof

Version R14.02

Wind Zone 1 Standard Roof		7/16" Rated Sheathing and Ceiling Board with 15 ga staple @ 6/12 (286,315) Chords: 7. 2x4 SPF #3 Top Plate spliced w/2x4 MCP & 2x3 SPF Rail spliced w/ 2x4 MCP					96 inch sidewall		
Diaphragm Construction:		Block Dist. X=0'							
Shearwall	Dist./ Hitch	Length	PLF	# of Joists	Lags	Notes	SW1/SW2		
A	0'	52"	162	2	1/1	*			
B	23.25'	128"	162	2	2/1				
C	55.96'	140.5"	162	2	2/2	Split Shearwall	94.5/46		
D	76'	48"	162	2	1/1				
Wind Zone 2 Standard Roof		7/16" Rated Sheathing and Ceiling Board with 15 ga staple @ 6/12 (286,315) Chords: 7. 2x4 SPF #3 Top Plate spliced w/2x4 MCP & 2x3 SPF Rail spliced w/ 2x4 MCP					96 inch sidewall		
Diaphragm Construction:		Block Dist. X=0'							
Shearwall	Dist./ Hitch	Length	PLF	# of Joists	Lags	Notes	SW1/SW2		
A	0'	96"	250	2	2/1	*			
B	23.25'	128"	430	3	4/1				
C	55.96'	140.5"	430	3	4/4	Split Shearwall	94.5/46		
D	76'	116"	162	2	2/1				
Wind Zone 3 Standard Roof		7/16" Rated Sheathing and Ceiling Board with 15 ga staple @ 6/12 (286,315) Chords: 7. 2x4 SPF #3 Top Plate spliced w/2x4 MCP & 2x3 SPF Rail spliced w/ 2x4 MCP					96 inch sidewall		
Diaphragm Construction:		Block Dist. X=0'							
Shearwall	Dist./ Hitch	Length	PLF	# of Joists	Lags	Notes	SW1/SW2		
A	0'	108"	250	2	2/1	*			
B	23.25'	128"	520	4	5/2				
C	55.96'	140.5"	430	3	4/4	Split Shearwall	94.5/46		
D	76'	120"	250	2	2/1				

* Denotes that indicated shearwall is over full depth/width front steel chassis header.

APPROVED

HWC

FEB 18 2026

Federal Manufactured
Home Construction 6
And Safety Standards

APPROVED

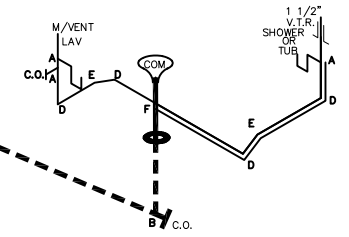
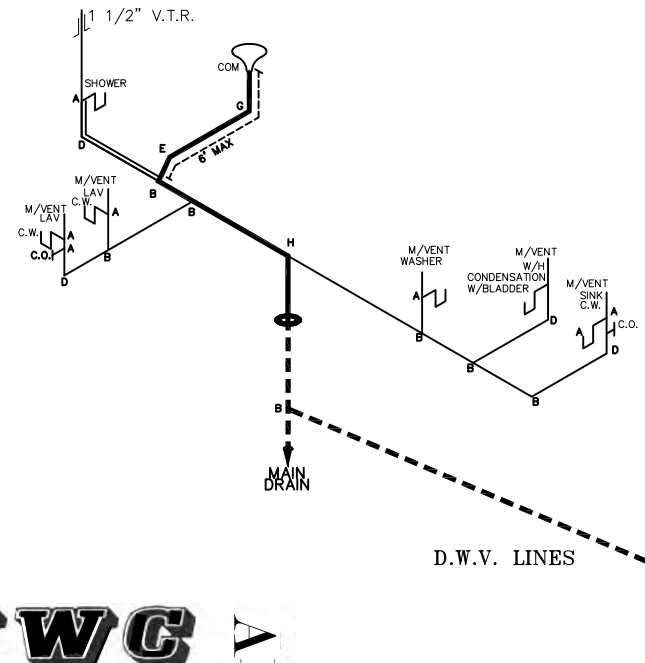
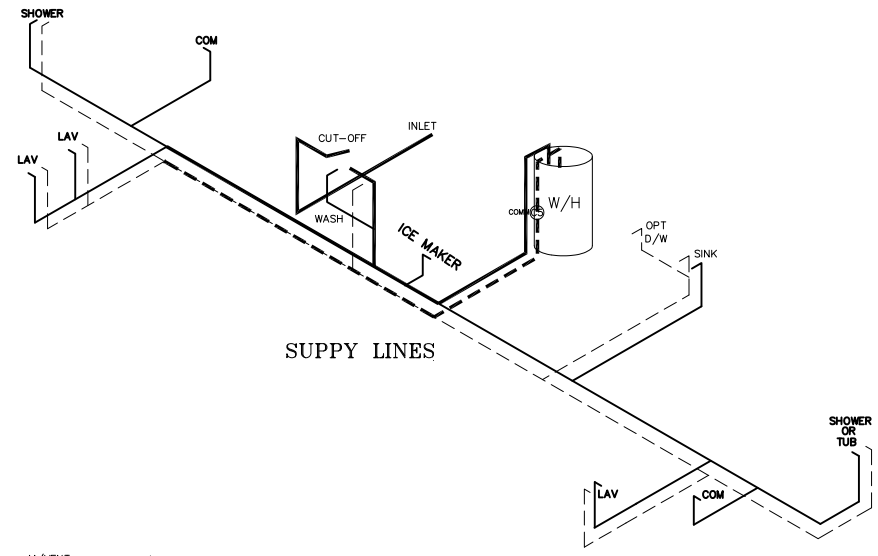
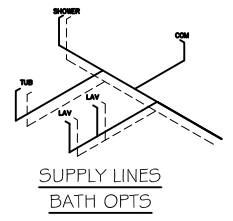
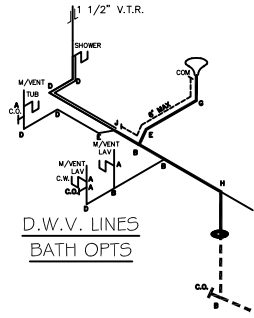
1140 SQ.FT. (STD PLAN "CONDITIONED")
 N/A SQ.FT. (W/OPT. PORCH/RECESS "CONDITIONED")

	Model #: SAV1G7G3T	Drawing #:
Date: 2/6/2026	Scale: NTS	37S172
Product Designer: Jessica Lambert		16x76' The Driftwood

SHEARWALL PAGE **0-N**

DASHED LINES INDICATE HOT WATER
SOLID LINES INDICATE COLD WATER

———— = 3/4"
———— = 1/2"



DWV LINE SIZE CHART

————	= 3"
————	= 2"
————	= 1 1/2"

LEGEND

A	SHORT TURN T-Y
B	LONG TURN T-Y
C	1/4 BEND
D	LONG SWEEP 1/4 BEND
E	45 ELL
F	DBL. SANITARY TEE
G	4x3 CLOSET ELL
H	DOUBLE ELL
I	22 1/2° ELL
J	45° Y
K	LONG TURN STREET ELBOW
L	45 FTG ELL

APPROVED

HWG

APPROVED

FEB 18 2026

Federal Manufactured
Home Construction 6
And Safety Standards

1140 SQ.FT. (STD PLAN "CONDITIONED")
N/A SQ.FT. (W/OPT. PORCH/RECESS "CONDITIONED")

Clayton Built	Model #: SAV16763T	Drawing #:
	Date: 2/6/2026	Scale: NTS 375172
Product Designer: Jessica Lambert		16'x76' The Driftwood
D.W.V. and Supply Lines		