

20 lb ROOF LOAD SIDEWALL OPENING PIER LOAD 16" BOX WIDTH	SIDEWALL OPENING (FT) REQUIRED PIER LOAD (LBS)					
	3	4	5	6	8	10
	1244	1413	1581	1750	2088	2425

\*FOR 30 lb & 40 lb ROOF LOAD REFER TO TABLES 7 & 7a IN THE INSTALLATION MANUAL.

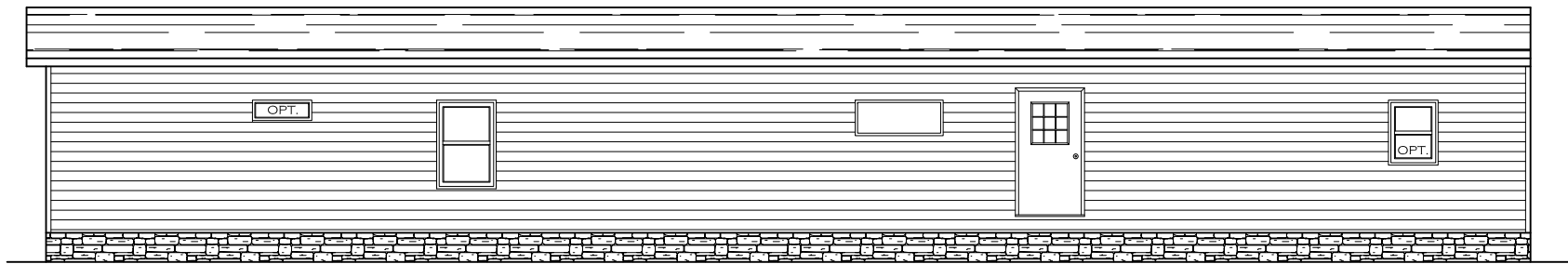
SERVICE DROP LEGEND	
<b>E</b>	= ELECTRICAL DROP
<b>W</b>	= WATER INLET
<b>D</b>	= DWV PLUMBING DROP
<b>G</b>	= GAS INLET

PIER LEGEND	
	= PIER MAIN BEAM
	= PIER PERIMETER
	= PIER PORCH/RECESSED ENTRY

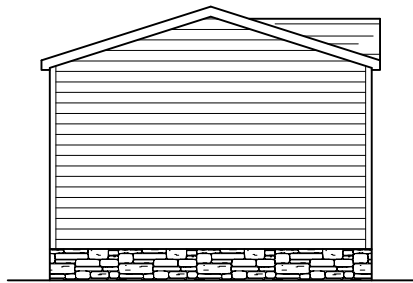
- NOTES:
- REFER TO TABLES 6 AND 6a IN THE INSTALLATION MANUAL FOR LOAD ON FRAME PIER FOOTINGS FOR HOMES THAT DO NOT REQUIRE PERIMETER BLOCKING. REFER TO TABLES 7 AND 7a IN THE INSTALLATION MANUAL FOR LOAD ON FRAME PIER FOOTINGS FOR HOMES THAT REQUIRE PERIMETER BLOCKING. REFER TO TABLES 10 AND 10a TO DETERMINE FOOTING SIZE FOR ALL PIERS.
  - REFER TO TABLE 9 FOR PIER CONFIGURATION AND MAXIMUM ALLOWABLE HEIGHTS. CROSS REFERENCE THE PIER HEIGHT WITH THE MAXIMUM ALLOWABLE FLOOR HEIGHT LISTED IN THE FRAME TIEDOWN CHARTS (TABLE 18, 19, AND 20).
  - THE MAXIMUM SPACING FOR 8" I-BEAMS IS 8 FEET, 10" & 12" I-BEAMS IS 10 FEET.
  - SERVICE DROP LOCATIONS IDENTIFIED ARE APPROXIMATE.
  - FLOOR WIDTH SHOWN IS FOR STANDARD PRODUCT ONLY. CONTACT THE MFG FACILITY FOR SPECIFICATIONS OF OPTIONS ORDERED.

1140 SQ.FT. (STD PLAN "CONDITIONED")  
N/A SQ.FT. (W/OPT. PORCH/RECESS "CONDITIONED")

	Model #: SAV16763G	Drawing #:
	Date: 10/07/24	Scale: NTS
Product Designer: J PIPES		16 x 76 THE GENERAL
FRAME PIERS		



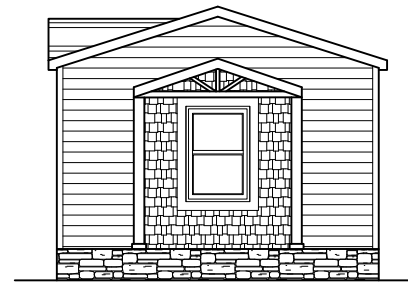
REAR ELEVATION



LEFT ELEVATION



HITCH END ELEVATION




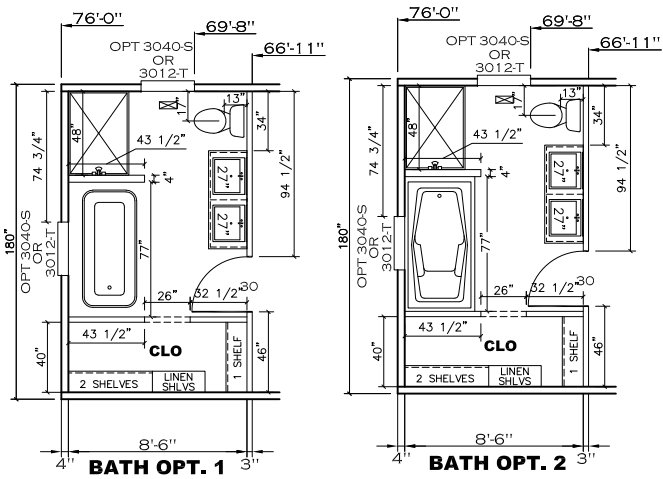
OPT.  
HITCH END ELEVATION



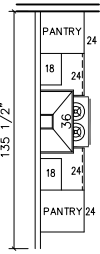
FRONT ELEVATION

1140 SQ.FT. (STD PLAN "CONDITIONED")  
 N/A SQ.FT. (W/OPT. PORCH/RECESS "CONDITIONED")

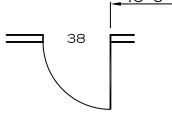
	Model #: SAV16763G	Drawing #:
	Date: 09/15/25	Scale: NTS 375170
Product Designer: Jessica Lambert		16 x 76 THE GENERAL
ELEVATION		



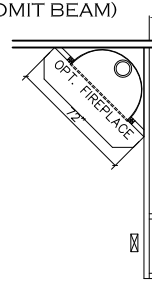
**OPT HOOD**



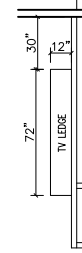
**OPT DOOR**



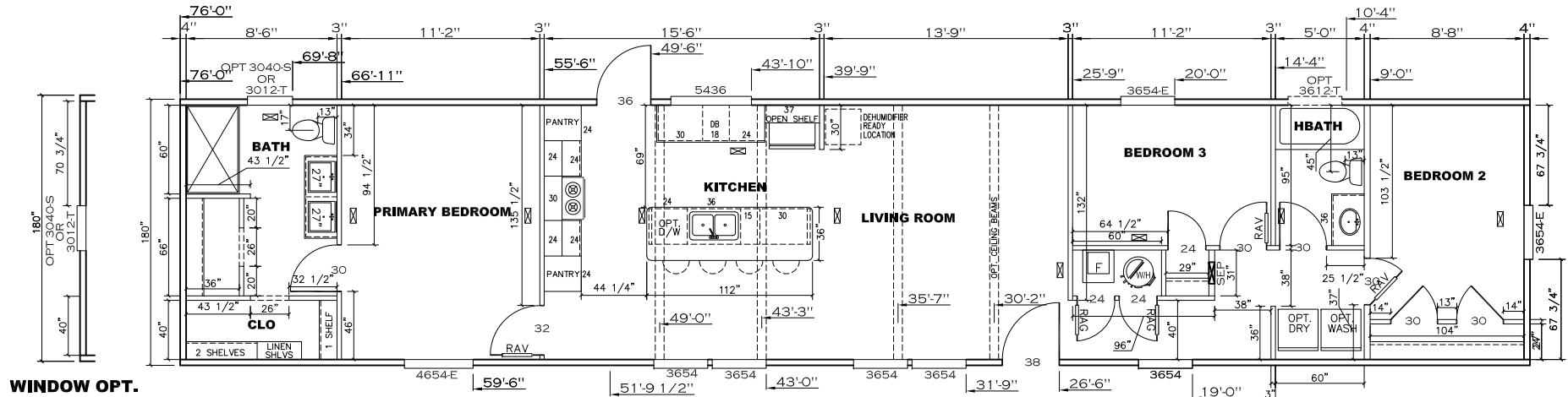
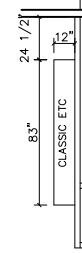
**OPT. CORNER FIREPLACE**  
(OMIT BEAM)



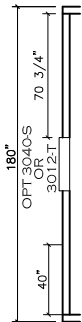
**OPT.**



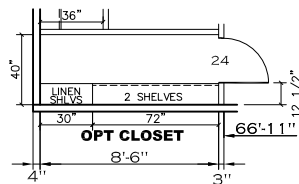
**OPT.**



**WINDOW OPT.**



TRANSOMS INSTALLED 6" A.F.F.  
MDL: 27.38 - 3/4"  
MDL: 59.17 - 1/2"  
GALLON VOLUME: 1.05

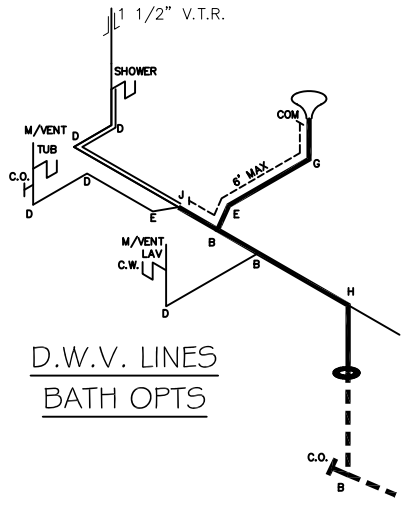


1140 SQ.FT. (STD PLAN "CONDITIONED")  
N/A SQ.FT. (W/OPT. PORCH/RECESS "CONDITIONED")

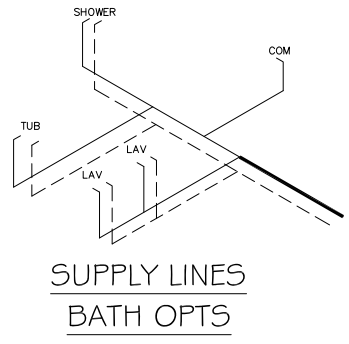
<b>Clayton Built</b>	Model #: SAV16763G	Drawing #:
	Date: 09/15/25	Scale: NTS
Product Designer: Jessica Lambert		16 x 76 THE GENERAL
<b>FLOOR PLAN</b>		

NOTE:  
 DASHED LINES INDICATE HOT WATER  
 SOLID LINES INDICATE COLD WATER

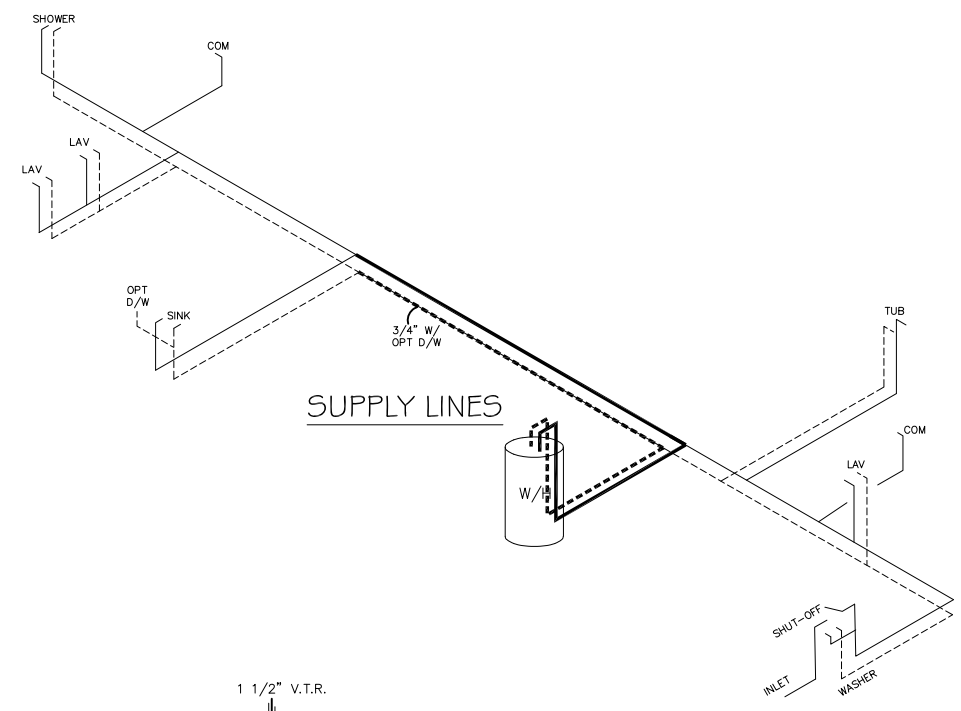
— = 3/4"  
 — = 1/2"



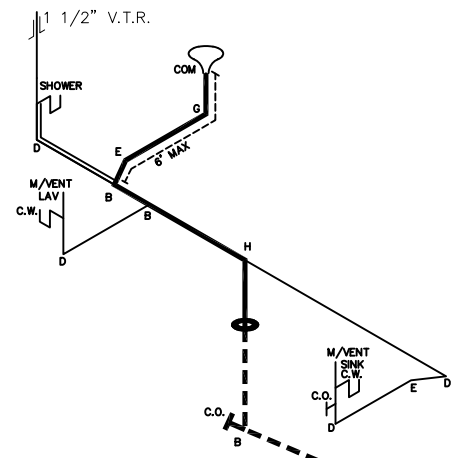
D.W.V. LINES  
BATH OPTS



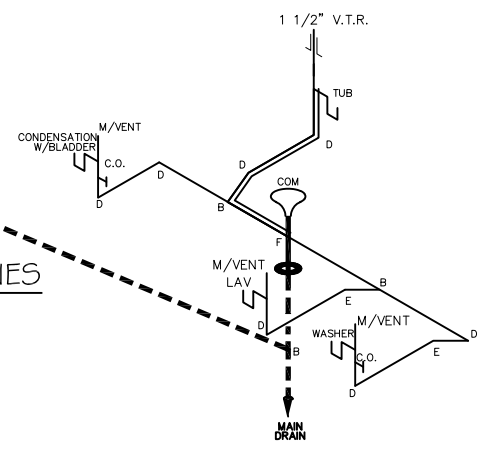
SUPPLY LINES  
BATH OPTS



SUPPLY LINES



D.W.V. LINES



APPROVED



APPROVED

OCT 14 2024

Federal Manufactured  
 Home Construction  
 And Safety Standards

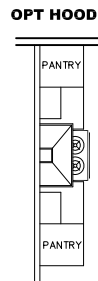
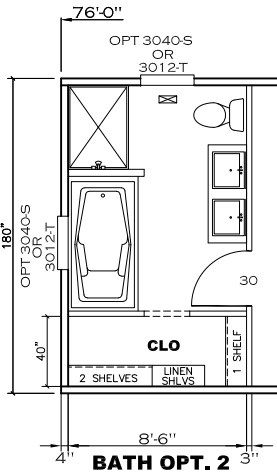
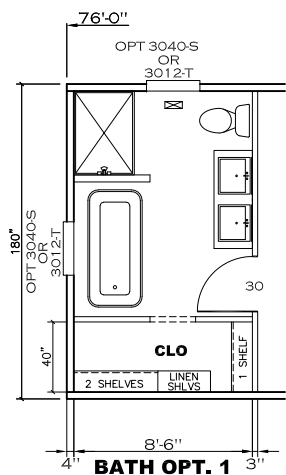
6

LEGEND	
A	SHORT TURN T-Y
B	LONG TURN T-Y
C	1/4 BEND
D	LONG SWEEP 1/4 BEND
E	45 ELL
F	DBL SANITARY TEE
G	4x3 CLOSET ELL
H	DOUBLE ELL
I	22 1/2" ELL
J	45 Y
K	LONG TURN STREET ELBOW
L	45 FTG ELL

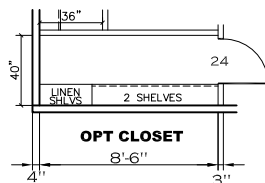
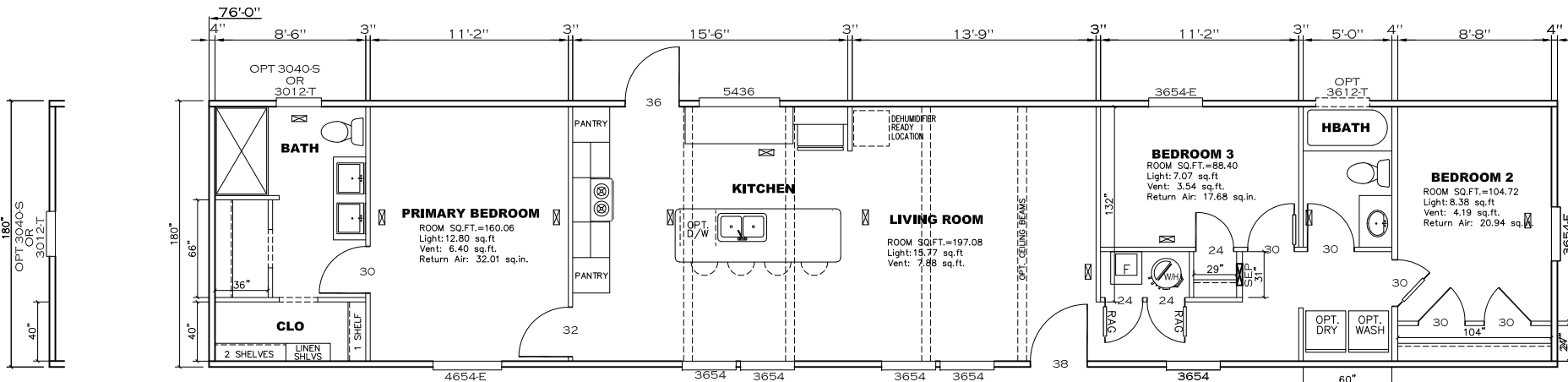
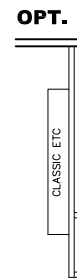
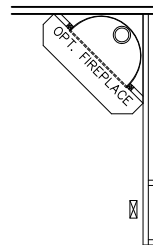
DWV LINE SIZE CHART	
—	= 3"
—	= 2"
—	= 1 1/2"

1140 SQ.FT. (STD PLAN "CONDITIONED")  
 N/A SQ.FT. (W/OPT. PORCH/RECESS "CONDITIONED")

	Model #: SAV16763G	Drawing #:
	Date: 10/07/24	Scale: NT5
Product Designer: J PIPES		16 x 76 THE GENERAL
<b>D.W.V. and Supply Lines</b>		



**OPT. CORNER FIREPLACE**  
 (OMIT BEAM)



**APPROVED**

**H W C**

**APPROVED**

DEC 03 2025

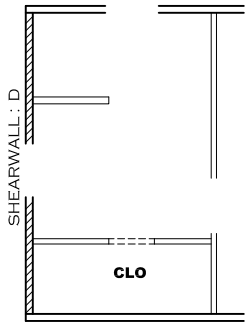
REVISED

Federal Manufactured  
 Home Construction  
 And Safety Standards

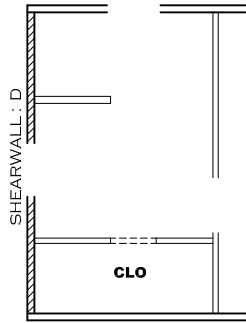
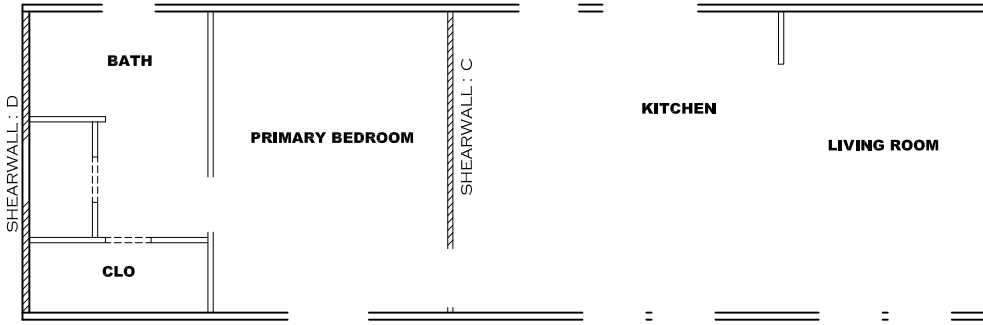
6

1140 SQ.FT. (STD PLAN "CONDITIONED")  
 N/A SQ.FT. (W/OPT. PORCH/RECESS "CONDITIONED")

	Model #: SAV1G763G	Drawing #:
	Date: 09/15/25	Scale: NT5
Product Designer: Jessica Lambert		16 x 76 THE GENERAL
<b>FLOOR PLAN</b>		



**BATH OPT. 1**



**BATH OPT. 2**

**Model # 37S170** Minimum Joist Spacing 16 "

Box Width = 180 " Single wide No Offset Box  
 Box Length = 76 ft. 99.5" 12" MIN. IBEAM No Clerestory  
 No Skylights No Origami Dormer  
 No Porches No Sunken Floor  
 Joist Size = #2 spf 2x6 Lags 9Mx3" No Parapet Roof

**Version R13.19**

**Wind Zone 1 Standard Roof** Ceiling board only [152 plf] Chords: 2x4 SPF #3 96 inch sidewall  
 Top Plate spliced w/2x4 MCP & 2x3 SPF Rail  
 Diaphragm Construction: spliced w/ 2x4 MCP

Shearwall	Dist./ Hitch	Length	PLF	# of Joists	Lags	Notes	SW1/SW2
A	0'	135.5"	162	2	1/1	Split Shearwall *	67.75/67.75
B	25.88'	124"	162	2	2/1		
C	55.63'	112"	162	2	2/1		
D	76'	141.5"	162	2	1/1	Split Shearwall	74.75/66.75

**Wind Zone 2 Standard Roof** (3/8" sheathing only with 15 gax 1.5" at 5"/10" oc. 96 inch sidewall  
 (197 plf) Chords: 2x4 SPF #3 Top Plate spliced  
 Diaphragm Construction: w/2x4 MCP & 2x3 SPF Rail spliced w/ 2x4 MCP

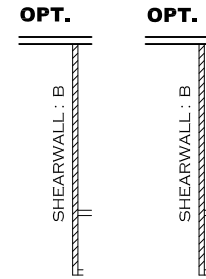
Shearwall	Dist./ Hitch	Length	PLF	# of Joists	Lags	Notes	SW1/SW2
A	0'	135.5"	425	2	4/4	Split Shearwall *	67.75/67.75
B	25.88'	124"	425	3	4/1		
C	55.63'	120"	425	3	4/1		
D	76'	141.5"	162	2	2/2	Split Shearwall	74.75/66.75

**Wind Zone 3 Standard Roof** (3/8" & ceiling with 15 gax 1.5" at 5"/10" oc. (267 96 inch sidewall  
 plf) Chords: 2x4 SPF #3 Top Plate spliced w/2x4  
 Diaphragm Construction: MCP & 2x3 SPF Rail spliced w/ 2x4 MCP

Shearwall	Dist./ Hitch	Length	PLF	# of Joists	Lags	Notes	SW1/SW2
A	0'	135.5"	425	2	4/4	Split Shearwall *	67.75/67.75
B	25.88'	128"	515	4	5/2		
C	55.63'	135.5"	425	3	4/1		0.37
D	76'	141.5"	425	5	4/4	Split Shearwall	74.75/66.75

**Wind Zone 1 Standard Roof** (3/8" sheathing only with 15 gax 1.5" at 5"/10" oc. 96 inch sidewall  
 (197 plf) Chords: 2x4 SPF #3 Top Plate spliced  
 Diaphragm Construction: w/2x4 MCP & 2x3 SPF Rail spliced w/ 2x4 MCP

Shearwall	Dist./ Hitch	Length	PLF	# of Joists	Lags	Notes	SW1/SW2
A	0'	135.5"	425	2	4/4	Split Shearwall *	67.75/67.75
D	76'	141.5"	425	5	4/4	Split Shearwall	74.75/66.75



**APPROVED**



**APPROVED**

**FEB 20 2025**

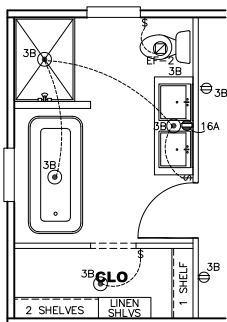
**REVISED**

Federal Manufactured Home Construction And Safety Standards

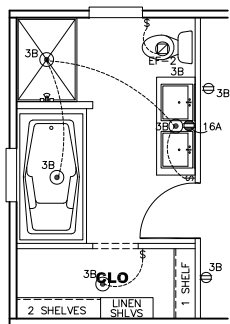
6

1140 SQ.FT. (STD PLAN "CONDITIONED")  
 N/A SQ.FT. (W/OPT. PORCH/RECESS "CONDITIONED")

<b>Clayton Built</b>	Model #: SAV16763G	Drawing #:
	Date: 10/07/24	Scale: NTS
Product Designer: J PIPES		16 x 76 THE GENERAL

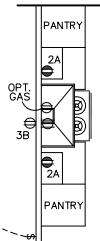


**BATH OPT. 1**

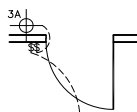


**BATH OPT. 2**

**OPT HOOD**

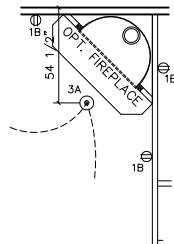


**OPT DOOR**

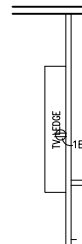


CIRCUIT	CIRCUIT #	WIRE	BREAKER	CIRCUIT	CIRCUIT #	WIRE	BREAKER	CIRCUIT	CIRCUIT #	WIRE	BREAKER
LIGHT/RECEP	1A,1B,3A,3B	14-2	15-SP	WATER HEATER	4A,6B	SEE NOTE #8		BATHROOM	16A	12-2	20-SP
KITCHEN/DINING	2A,2B	12-2	20-SP	RANGE	5B,7A	SEE NOTE #8		OPT G/DISP	9B	SEE NOTE #8	
WASHER	12A	12-2	20-SP	OPT GAS RANGE	15B	SEE NOTE #8		OPT SPA/WP/JAC	11A,B	SEE NOTE #8	
DRYER	5A,7B	SEE NOTE #8		FURNACE	6A,8A,B,10A,B	SEE NOTE #8		FREEZER	N/A	SEE NOTE #8	
				OPT D/WASH	9A	SEE NOTE #8					
				SMOKE ALARM/CO	4B	SEE NOTE #8					

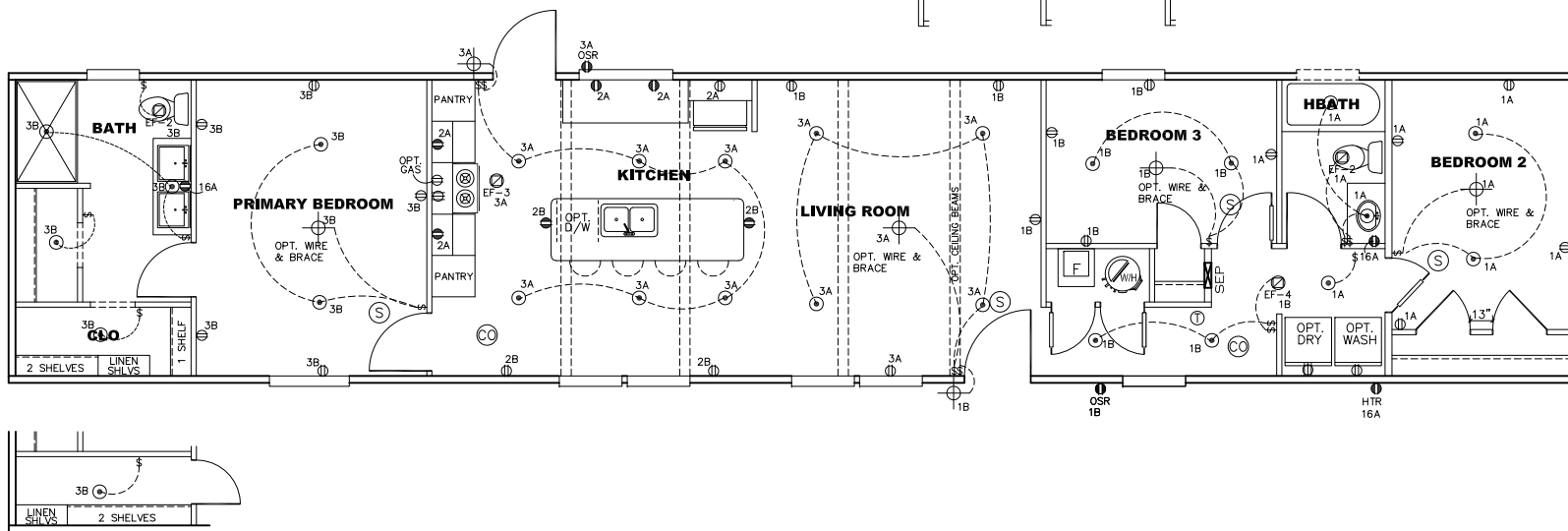
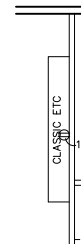
**OPT. CORNER FIREPLACE (OMIT BEAM)**



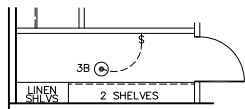
**OPT.**



**OPT.**



**OPT CLOSET**



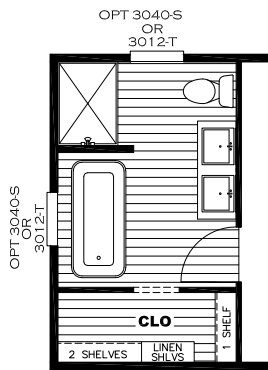
**NOTES:**

- ALL CIRCUITS SHOWN ARE FOR REFERENCE AND MAY BE CHANGED BASED ON OPTIONAL COMPONENTS INSTALLED IN THE HOME.
- REFER TO DAPIA MANUAL FOR SYMBOL CHART.
- EITHER LIGHT OR RECEPTACLE MUST CONNECT TO SWITCH.
- EF-1= 50 CFM EXHAUST FAN REQUIRED FOR THERMAL ZONE III THERMAL ZONES I & II MAY USE FAN OR WINDOW W/1.5 SQ. FT. OPENABLE GLASS.
- EF-2= 50 CFM EXHAUST FAN REQUIRED THERMAL ZONE I, II, AND III.
- EF-3= 100 CFM RANGE EXHAUST FAN, SWITCH AT HOOD.
- EF-4= WHOLE HOUSE VENTILATION REQUIREMENTS PER DAPIA MANUAL.
- REFER TO DAPIA MANUAL OR THE MFG. INSTALLATION INSTRUCTIONS FOR PROPER WIRE SIZE AND BREAKER SIZE FOR SPECIFIC APPLIANCE AND MODEL BEING INSTALLED.
- ALL SMOKE ALARMS TO BE LOCATED ON THE CEILING.
- CARBON MONOXIDE ALARMS ARE ONLY REQUIRED WHEN HOME HAS EITHER FUEL BURNING APPLIANCE, IS GARAGE READY OR IS BASEMENT READY. REFERENCE DAPIA MANUAL FOR ADDITIONAL INFORMATION.
- DIMENSIONS SHOWN ON PRINT ARE APPROXIMATE AND TO BE USED ONLY AS A GUIDELINE.

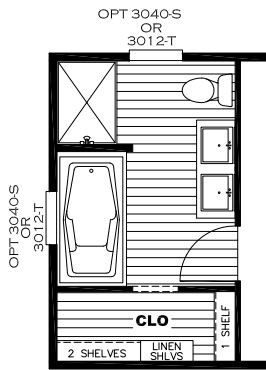
**APPROVED**  
  
**SEP 29 2025**  
 REVISED  
 Federal Manufactured  
 Home Construction  
 And Safety Standards  
**APPROVED**

1140 SQ.FT. (STD PLAN "CONDITIONED")  
 N/A SQ.FT. (W/OPT. PORCH/RECESS "CONDITIONED")

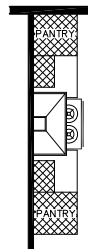
 Product Designer: Jessica Lambert	Model #: SAV16763G Date: 09/15/25 Scale: NTS	Drawing #: 375170
	16 x 76 THE GENERAL	
<b>ELECTRICAL PLAN-06</b>		



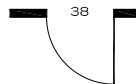
**BATH OPT. 1**



**BATH OPT. 2**



**OPT DOOR**



**OPT. CORNER FIREPLACE (OMIT BEAM)**



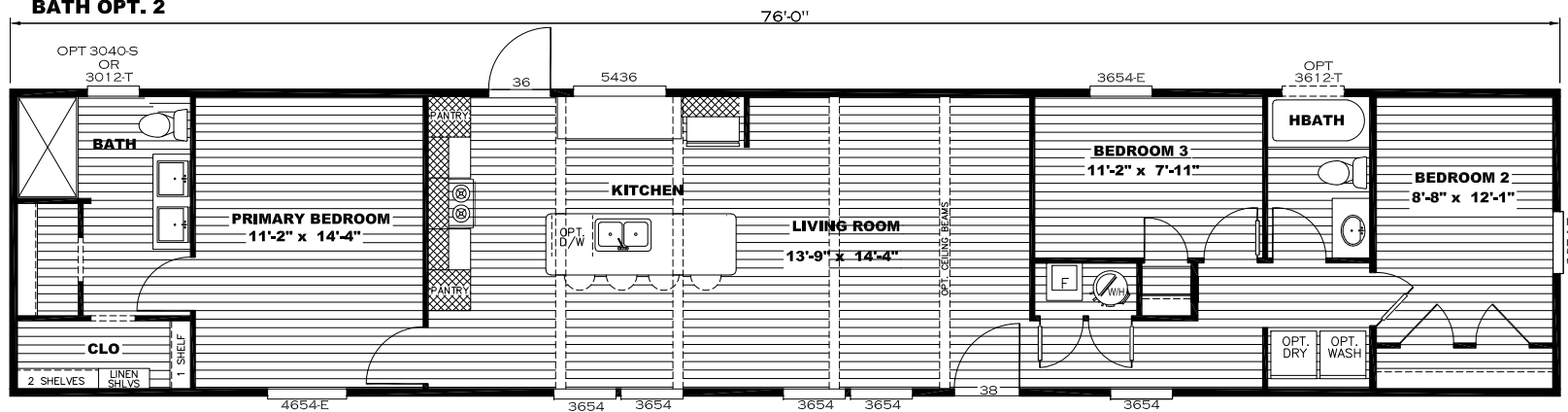
**OPT.**



**OPT.**



**WINDOW OPT.**



**OPT CLOSET**

16 x 76 THE GENERAL  
 Drawing #:  
 375170  
 Model #: SAVI6763G