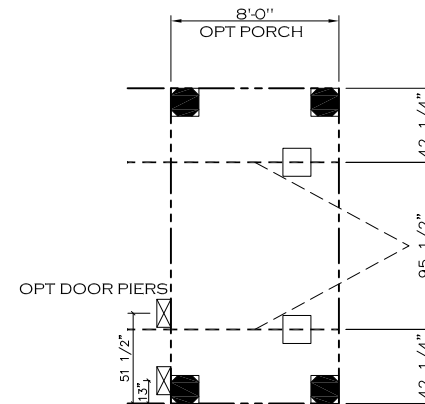


PERIMETER SKIRTING MATERIAL AND FOUNDATION WALL DESIGNS ARE TO ALIGN WITH THE HOME'S EXTERIOR WALL PERIMETER. AREAS AROUND PORCHES OR RECESSED ENTRIES ARE TO BE SEPARATED TO PREVENT MOISTURE FROM ACCUMULATING BENEATH THE HOME.



PERIMETER SKIRTING MATERIAL AND FOUNDATION WALL DESIGNS ARE TO ALIGN WITH THE HOME'S EXTERIOR WALL PERIMETER. AREAS AROUND PORCHES OR RECESSED ENTRIES ARE TO BE SEPARATED TO PREVENT MOISTURE FROM ACCUMULATING BENEATH THE HOME.

20 lb ROOF LOAD SIDEWALL OPENING PIER LOAD 16' BOX WIDTH	SIDEWALL OPENING (FT) REQUIRED PIER LOAD (LBS)					
	3	4	5	6	8	10
	1244	1413	1581	1750	2088	2425

\*FOR 30 lb & 40 lb ROOF LOAD REFER TO TABLES 7 & 7a IN THE INSTALLATION MANUAL.

SERVICE DROP LEGEND	
	= ELECTRICAL DROP
	= WATER INLET
	= DWV PLUMBING DROP
	= GAS INLET

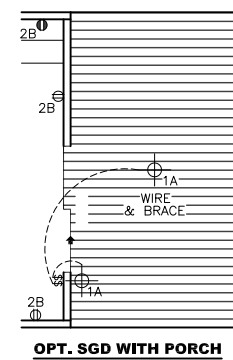
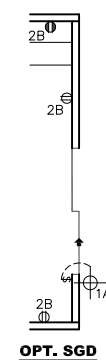
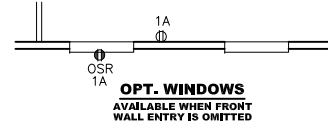
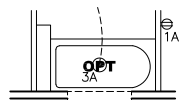
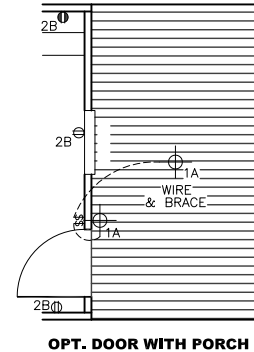
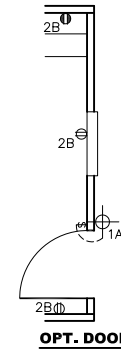
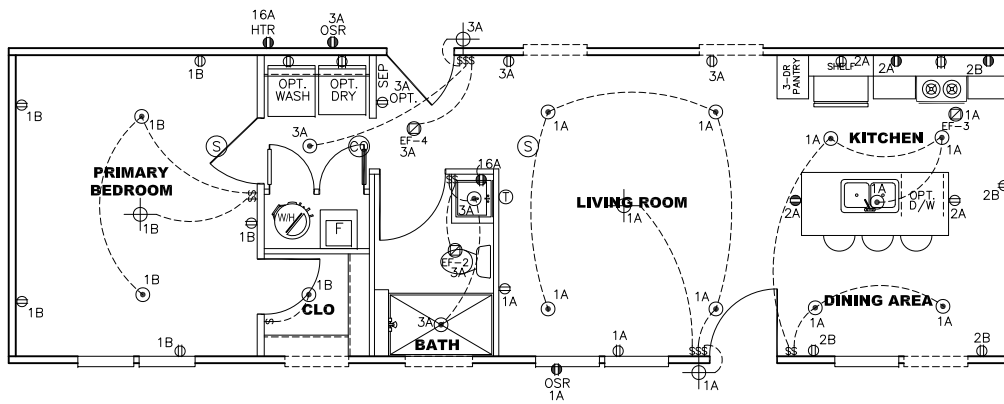
PIER LEGEND	
	= PIER MAIN BEAM
	= PIER PERIMETER
	= PIER PORCH/RECESSED ENTRY

NOTES:

- REFER TO TABLES 6 AND 6a IN THE INSTALLATION MANUAL FOR LOAD ON FRAME PIER FOOTINGS FOR HOMES THAT DO NOT REQUIRE PERIMETER BLOCKING. REFER TO TABLES 7 AND 7a IN THE INSTALLATION MANUAL FOR LOAD ON FRAME PIER FOOTINGS FOR HOMES THAT REQUIRE PERIMETER BLOCKING. REFER TO TABLES 10 AND 10a TO DETERMINE FOOTING SIZE FOR ALL PIERS.
- REFER TO TABLE 9 FOR PIER CONFIGURATION AND MAXIMUM ALLOWABLE HEIGHTS. CROSS REFERENCE THE PIER HEIGHT WITH THE MAXIMUM ALLOWABLE FLOOR HEIGHT LISTED IN THE FRAME TIEDOWN CHARTS (TABLE 18, 19, AND 20).
- THE MAXIMUM SPACING FOR 8" I-BEAMS IS 8 FEET, 10" & 12" I-BEAMS IS 10 FEET.
- SERVICE DROP LOCATIONS IDENTIFIED ARE APPROXIMATE.
- FLOOR WIDTH SHOWN IS FOR STANDARD PRODUCT ONLY. CONTACT THE MFG FACILITY FOR SPECIFICATIONS OF OPTIONS ORDERED.

	Model #: SAV16481A	Drawing #:
	Date: 5/30/23	Scale: NTS
Product Designer: E HARDWICK		
720 SQ.FT. (STD PLAN "CONDITIONED") N/A SQ.FT. (W/OPT. PORCH/RECESS "CONDITIONED") <b>16 x 48 Savannah Living</b>		
<b>FRAME PIERS</b>		





APPROVED

**HWG**

APPROVED

JUN 12 2025

REVISED

Federal Manufactured  
Home Construction  
And Safety Standards

6

NOTES:

- ALL CIRCUITS SHOWN ARE FOR REFERENCE AND MAY BE CHANGED BASED ON OPTIONAL COMPONENTS INSTALLED IN THE HOME.
- REFER TO DAPIA MANUAL FOR SYMBOL CHART.
- EITHER LIGHT OR RECEPTACLE MUST CONNECT TO SWITCH.
- EF-1= 50 CFM EXHAUST FAN REQUIRED FOR THERMAL ZONE III THERMAL ZONES I & II MAY USE FAN OR WINDOW W/1.5 SQ. FT. OPENABLE GLASS.
- EF-2= 50 CFM EXHAUST FAN REQUIRED THERMAL ZONE I, II, AND III.
- EF-3= 100 CFM RANGE EXHAUST FAN, SWITCH AT HOOD.
- EF-4= WHOLE HOUSE VENTILATION REQUIREMENTS PER DAPIA MANUAL.
- REFER TO DAPIA MANUAL OR THE MFG. INSTALLATION INSTRUCTIONS FOR PROPER WIRE SIZE AND BREAKER SIZE FOR SPECIFIC APPLIANCE AND MODEL BEING INSTALLED.
- ALL SMOKE ALARMS TO BE LOCATED ON THE CEILING.
- CARBON MONOXIDE ALARMS ARE ONLY REQUIRED WHEN HOME HAS EITHER FUEL BURNING APPLIANCES, IS GARAGE READY OR IS BASEMENT READY. REFERENCE DAPIA MANUAL FOR ADDITIONAL INFORMATION.
- DIMENSIONS SHOWN ON PRINT ARE APPROXIMATE AND TO BE USED ONLY AS A GUIDELINE.

CIRCUIT	CIRCUIT #	WIRE	BREAKER	CIRCUIT	CIRCUIT #	WIRE	BREAKER	CIRCUIT	CIRCUIT #	WIRE	BREAKER
LIGHT/RECEP	1 A, 1 B, 3 A	14-2	15-SP	WATER HEATER	4A, 6B	SEE NOTE #8		BATHROOM	16 A	12-2	20-SP
KITCHEN/DINING	2A, 2B	12-2	20-SP	RANGE	5B, 7A	SEE NOTE #8		OPT G/DISP	9B	SEE NOTE #8	
WASHER	12A	12-2	20-SP	OPT GAS RANGE	15B	SEE NOTE #8		OPT SPA/WP/JAC	11A, B	SEE NOTE #8	
DRYER	5A, 7B	SEE NOTE #8		FURNACE	6A, 8A, B, 10A, B	SEE NOTE #8		FREEZER	N/A	SEE NOTE #8	
				OPT D/WASH	9A	SEE NOTE #8					
				SMOKE ALARM	4B	SEE NOTE #8					

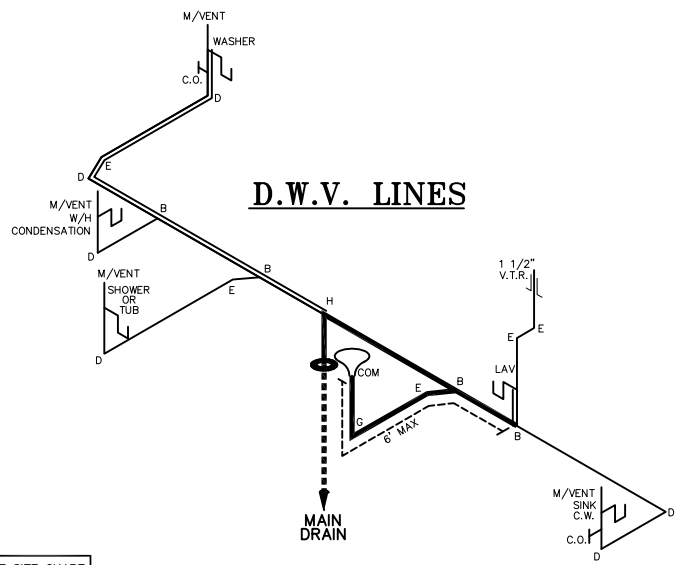
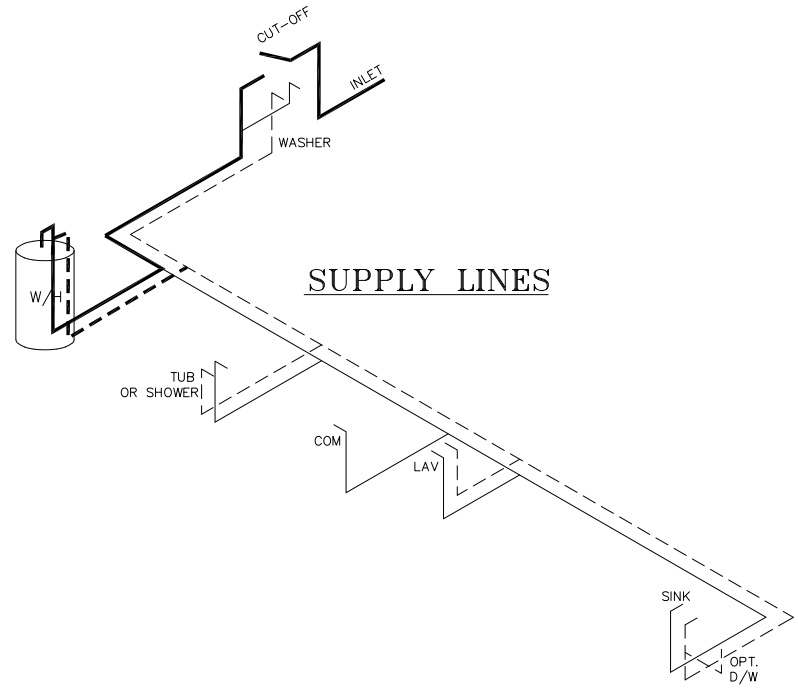
720 SQ.FT. (STD PLAN "CONDITIONED")  
N/A SQ.FT. (W/OPT. PORCH/RECESS "CONDITIONED")

<b>Clayton Built</b>	Model #: SAV16481A	Drawing #:
	Date: 5/30/23	Scale: NTS
Product Designer: E HARDWICK		16 x 48 Savannah Living
<b>ELECTRICAL PLAN-06</b>		



NOTE:  
 DASHED LINES INDICATE HOT WATER  
 SOLID LINES INDICATE COLD WATER

— = 3/4"  
 — = 1/2"



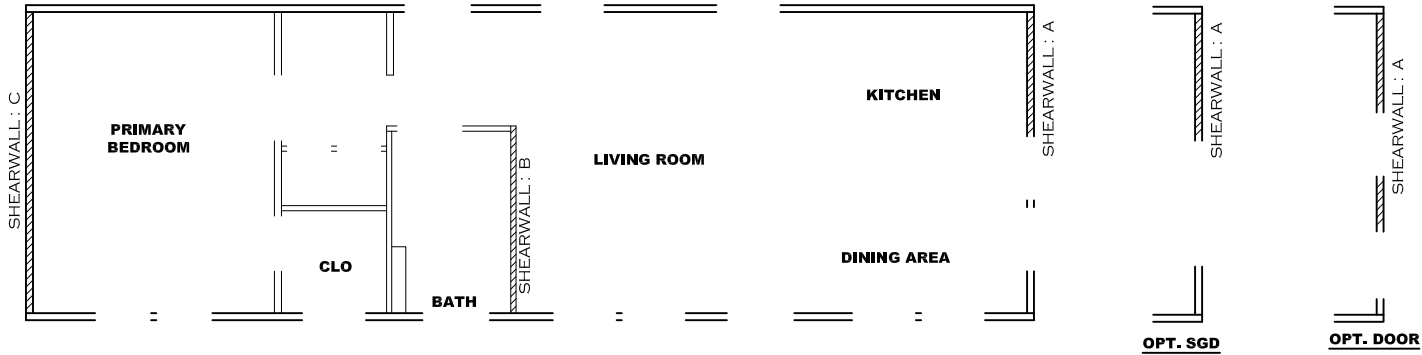
**APPROVED** **HWG** **APPROVED**  
 20 JUN 2023  
 Federal Manufactured  
 Home Construction  
 And Safety Standards

LEGEND	
A	SHORT TURN T-Y
B	LONG TURN T-Y
C	1/4 BEND
D	LONG SWEEP 1/4 BEND
E	45 ELL
F	DBL. SANITARY TEE
G	4x3 CLOSET ELL
H	DOUBLE ELL
I	22 1/2° ELL
J	45° Y
K	LONG TURN STREET ELBOW
L	45 FTG ELL

DWV LINE SIZE CHART	
—	= 3"
—	= 2"
—	= 1 1/2"

720 SQ.FT. (STD PLAN "CONDITIONED")  
 N/A SQ.FT. (W/OPT. PORCH/RECESS "CONDITIONED")

<b>CMH</b> MANUFACTURING	Model #: SAVIG481A	Drawing #:
	Date: 5/30/23	Scale: NT5
Product Designer: E HARDWICK		16 x 48 Savannah Living
<b>D.W.V. and Supply Lines</b>		



**Model # 37s166** Minimum Joist Spacing 16 "  
 Box Width = 180 " Single wide No Offset Box  
 Box Length = 48 ft. 99.5" 12" MIN.IBEAM No Clerestory  
 No Skylights No Origami Dormer  
 No Porches No Sunken Floor  
 Joist Size = #2 spf 2x6 Lags 9Mx3" No Parapet Roof

**Model # 37s166-OPT 38" DOOR** Minimum Joist Spacing 16 "  
 Box Width = 180 " Single wide No Offset Box  
 Box Length = 48 ft. 99.5" 12" MIN.IBEAM No Clerestory  
 No Skylights No Origami Dormer  
 No Porches No Sunken Floor  
 Joist Size = #2 spf 2x6 Lags 9Mx3" No Parapet Roof

**Version R13.19**

**Wind Zone 1 Standard Roof** Ceiling board only [152 plf] Chords: 2x4 SPF #3 96 inch sidewall  
 Diaphragm Construction: Top Plate spliced w/2x4 MCP & 2x3 SPF Rail spliced w/ 2x4 MCP

Shearwall	Dist./ Hitch	Length	PLF	# of Joists	Lags	Notes	% over
A	0'	56"	162	2	1/1	*	
B	24.96'	107"	162	2	1/1		0.93
C	48'	52"	162	2	1/1		

**Wind Zone 2 Standard Roof** (3/8" sheathing only with 15 gax 1.5" at 5"/10" oc. 96 inch sidewall  
 (197 plf) Chords: 2x4 SPF #3 Top Plate spliced w/2x4 MCP & 2x3 SPF Rail spliced w/ 2x4 MCP  
 Diaphragm Construction:

Shearwall	Dist./ Hitch	Length	PLF	# of Joists	Lags	Notes	% over
A	0'	56"	425	2	2/1	*	
B	24.96'	107"	425	5	3/1		0.93
C	48'	136"	162	2	2/1		

**Wind Zone 3 Standard Roof** (3/8" sheathing only with 15 gax 1.5" at 5"/10" oc. 96 inch sidewall  
 (197 plf) Chords: 2x4 SPF #3 Top Plate spliced w/2x4 MCP & 2x3 SPF Rail spliced w/ 2x4 MCP  
 Diaphragm Construction:

Shearwall	Dist./ Hitch	Length	PLF	# of Joists	Lags	Notes	% over
A	0'	68"	425	2	2/1	*	
B	24.96'	107"	515	7	4/1		0.93
C	48'	164"	162	2	2/1		

**Wind Zone 1 Standard Roof** (3/8" sheathing only with 15 gax 1.5" at 5"/10" oc. 96 inch sidewall  
 (197 plf) Chords: 2x4 SPF #3 Top Plate spliced w/2x4 MCP & 2x3 SPF Rail spliced w/ 2x4 MCP  
 Diaphragm Construction:

Shearwall	Dist./ Hitch	Length	PLF	# of Joists	Lags	Notes	% over
A	0'	44"	425	2	1/1	*	
C	48'	108"	162	2	2/1		

\* Denotes that indicated shearwall is over full depth/width front steel chassis header.

**Wind Zone 1 Standard Roof** Ceiling board only [152 plf] Chords: 2x4 SPF #3 96 inch sidewall  
 Diaphragm Construction: Top Plate spliced w/2x4 MCP & 2x3 SPF Rail spliced w/ 2x4 MCP

Shearwall	Dist./ Hitch	Length	PLF	# of Joists	Lags	Notes	SW1/SW2	% over
A	0'	87.875"	162	2	1/1	Split-Island Shearwall	56.5/31.375	
B	24.96'	107"	162	2	1/1			0.93
C	48'	52"	162	2	1/1			

**Wind Zone 2 Standard Roof** (3/8" sheathing only with 15 gax 1.5" at 5"/10" oc. 96 inch sidewall  
 (197 plf) Chords: 2x4 SPF #3 Top Plate spliced w/2x4 MCP & 2x3 SPF Rail spliced w/ 2x4 MCP  
 Diaphragm Construction:

Shearwall	Dist./ Hitch	Length	PLF	# of Joists	Lags	Notes	SW1/SW2	% over
A	0'	87.875"	425	2	2/2	Split-Island Shearwall	56.5/31.375	
B	24.96'	107"	425	5	3/1			0.93
C	48'	136"	162	2	2/1			

**Wind Zone 3 Standard Roof** (3/8" sheathing only with 15 gax 1.5" at 5"/10" oc. 96 inch sidewall  
 (197 plf) Chords: 2x4 SPF #3 Top Plate spliced w/2x4 MCP & 2x3 SPF Rail spliced w/ 2x4 MCP  
 Diaphragm Construction:

Shearwall	Dist./ Hitch	Length	PLF	# of Joists	Lags	Notes	SW1/SW2	% over
A	0'	87.875"	425	2	2/2	Split-Island Shearwall	56.5/31.375	
B	24.96'	107"	515	7	4/1			0.93
C	48'	164"	162	2	2/1			

**Wind Zone 1 Standard Roof** (3/8" sheathing only with 15 gax 1.5" at 5"/10" oc. 96 inch sidewall  
 (197 plf) Chords: 2x4 SPF #3 Top Plate spliced w/2x4 MCP & 2x3 SPF Rail spliced w/ 2x4 MCP  
 Diaphragm Construction:

Shearwall	Dist./ Hitch	Length	PLF	# of Joists	Lags	Notes	SW1/SW2	% over
A	0'	87.875"	425	2	1/1	Split-Island Shearwall	56.5/31.375	
C	48'	108"	162	2	2/1			

\* Denotes that indicated shearwall is over full depth/width front steel chassis header.

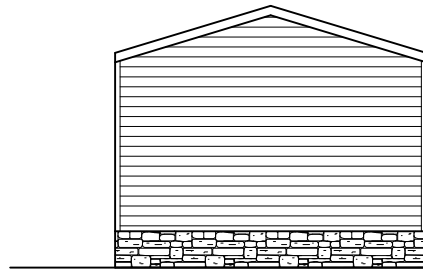
720 SQ.FT. (STD PLAN "CONDITIONED")  
 N/A SQ.FT. (W/OPT. PORCH/RECESS "CONDITIONED")

<b>Clayton Built</b>	Model #: SAV16481A	Drawing #:
Date: 5/30/23	Scale: NTS	375166
Product Designer: E. HARDWICK		16 x 48 Savannah Living

**SHEARWALL PAGE**



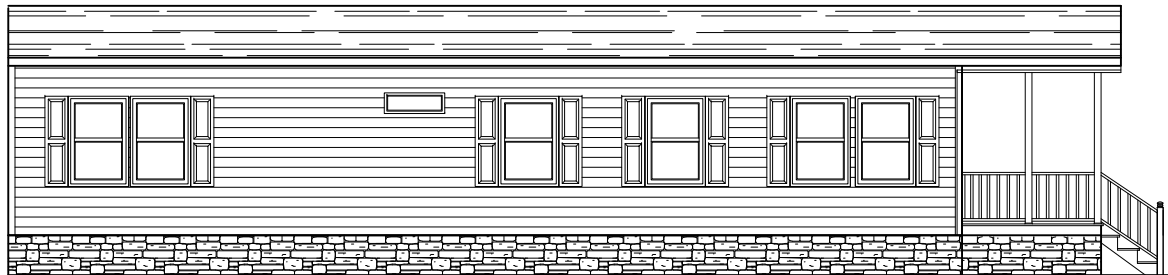
***REAR ELEVATION***



***LEFT SIDE ELEVATION***



***RIGHT SIDE ELEVATION***



***FRONT ELEVATION***

859 SQ.FT. (STD PLAN "CONDITIONED")  
 N/A SQ.FT. (W/OPT. PORCH/RECESS "CONDITIONED")

<b>CMH</b> MANUFACTURING	Model #: FAC16562A	Drawing #:
	Date: 07/10/25	Scale: N.T.S. 375166
Product Designer: Jessica Lambert		16 x 56 Factory Direct
<b>Elevation</b>		