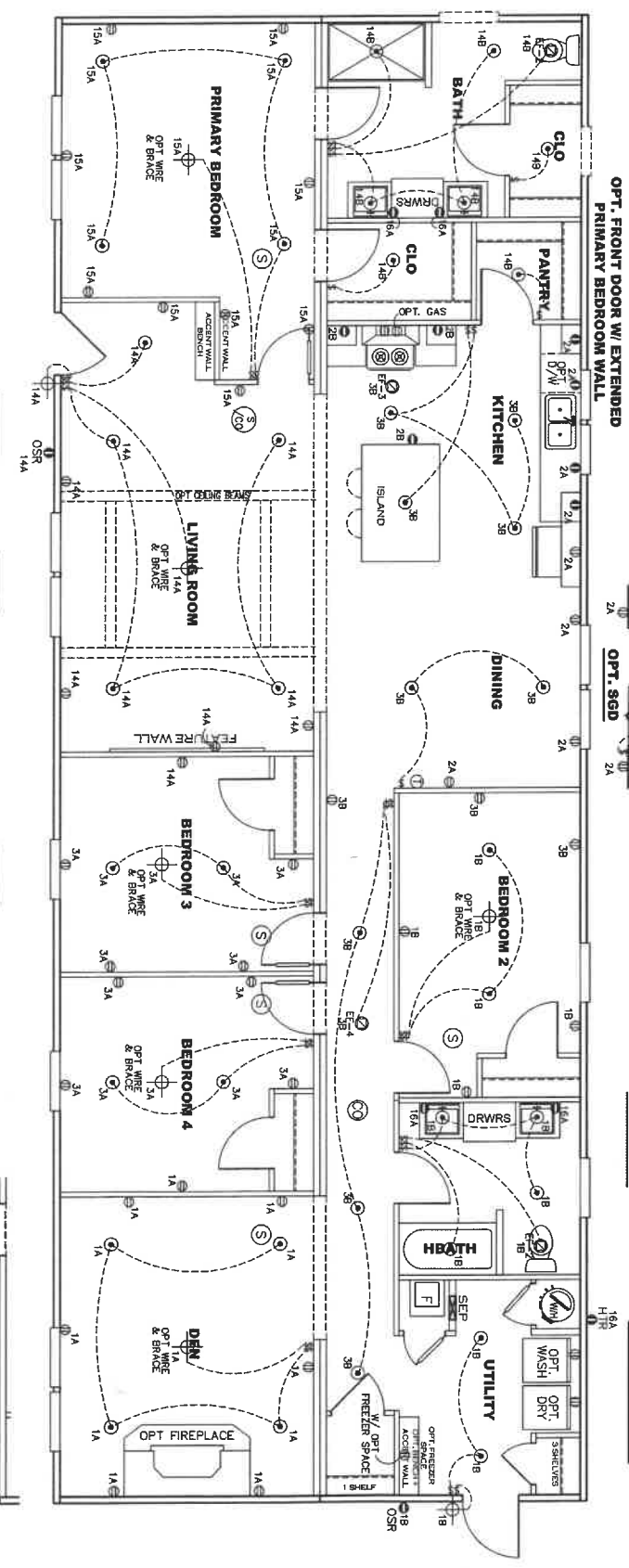
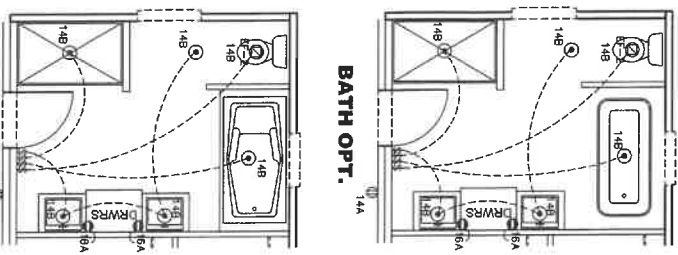
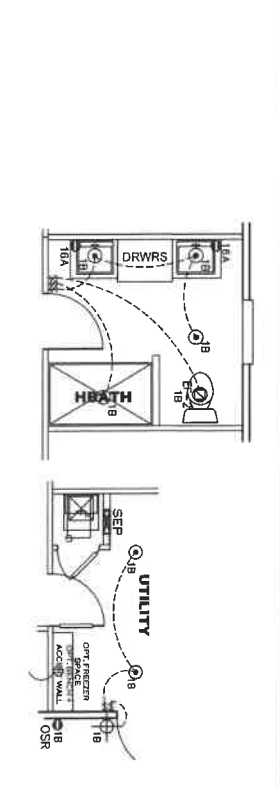
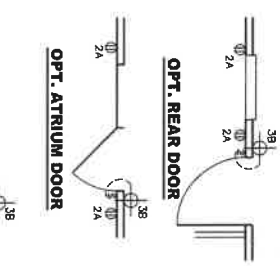
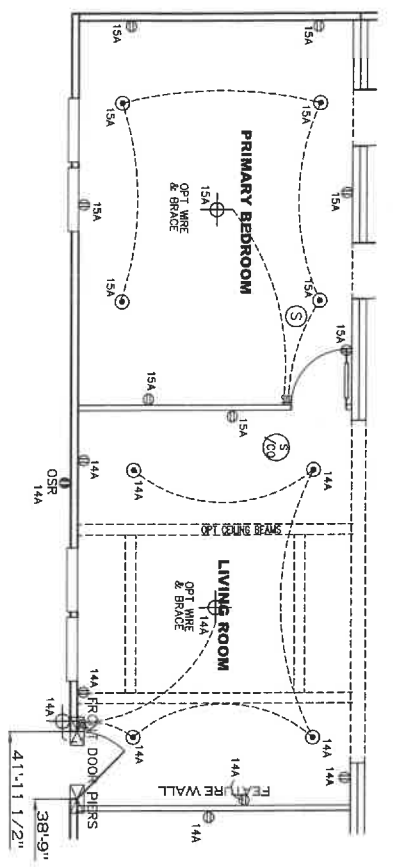


CIRCUIT	CIRCUIT #	WIRE	BREAKER	CIRCUIT	CIRCUIT #	WIRE	BREAKER	CIRCUIT	CIRCUIT #	WIRE	BREAKER
LIGHT/RECP	1A,3A,B,14A,B,15A	14-2	15-SP	WATER HEATER	4A,6B	SEE NOTE #9		BATHROOM	16A	12-2	20-SP
KITCHEN/RNG	2A,2B	12-2	20-SP	RANGE	5B,7A	SEE NOTE #9		OPT C/D/SP	9B	SEE NOTE #8	
WASHER	12A	12-2	20-SP	OPT GAS RANGE	15B	SEE NOTE #9		WP/LAV	11A,B	SEE NOTE #8	
DRYER	5A,7B	SEE NOTE #9		FURNACE	6A,8A,B,10A,B	SEE NOTE #8		FREEZER	13A	SEE NOTE #8	
				OPT D/WASH	9A	SEE NOTE #9					
				PHONE ALARM/DC	4B	SEE NOTE #8					



- NOTES**
1. ALL CIRCUITS SHOWN ARE FOR REFERENCE AND MAY BE CHANGED BASED ON OPTIONAL COMPONENTS INSTALLED IN THE HOME.
 2. REFER TO DAPA MANUAL FOR SYMBOL CHART.
 3. EITHER LIGHT OR RECEPTACLE MUST CONNECT TO SWITCH.
 4. EF-1= 90 CFM EXHAUST FAN REQUIRED FOR THERMAL ZONE I & II MAY USE FAN OR WINDOW W/1.5 SQ. FT. OPENABLE GLASS.
 5. EF-2= 90 CFM EXHAUST FAN REQUIRED THERMAL ZONE I, II, AND III.
 6. EF-3= 100 CFM RANGE EXHAUST FAN, SWITCH AT HOOD.
 7. EF-4= WHOLE HOUSE VENTILATION REQUIREMENTS PER DAPA MANUAL.
 8. REFER TO DAPA MANUAL OR THE MFG. INSTALLATION INSTRUCTIONS FOR PROPER WIRE SIZE AND BREAKER SIZING APPLIANCE AND MODEL BEING INSTALLED.
 9. ALL SMOKE ALARMS TO BE LOCATED ON THE CEILING.
 10. CARBON MONOXIDE ALARMS ARE ONLY REQUIRED WHEN HOME HAS EITHER FUEL BURNING APPLIANCE, IS GARAGE READY OR ADDITIONAL INFORMATION.
 11. DIMENSIONS SHOWN ON PRINT ARE APPROXIMATE AND TO BE USED ONLY AS A GUIDE LINE.

APPROVED

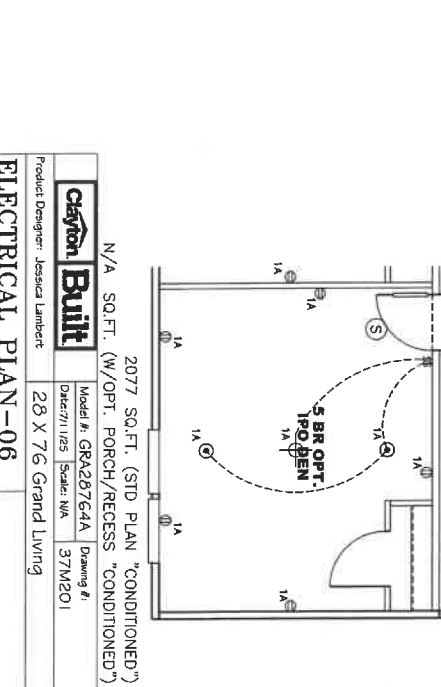
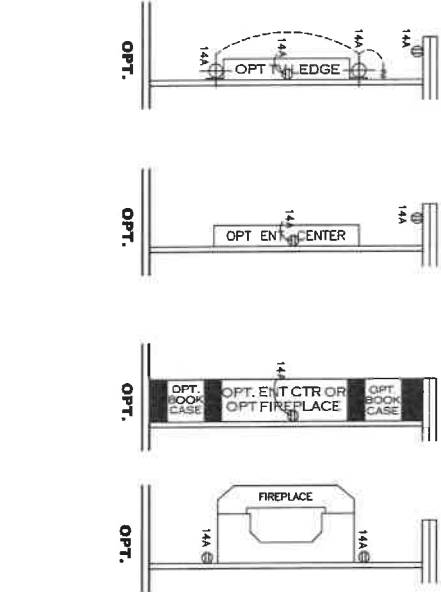
HWG

JUL 15 2025

REVISED

FP-28-5491
Federal Manufactured
Home Construction
and Safety Standards

APPROVED



2077 SQ.FT. (STD PLAN "CONDITIONED")

N/A SQ.FT. (W/OPT. PORCH/RECESS)

Crayon Built

Product Designer: Jessica Lambert

Model #: GR28764A

Dated: 7/1/25

Issue: N/A

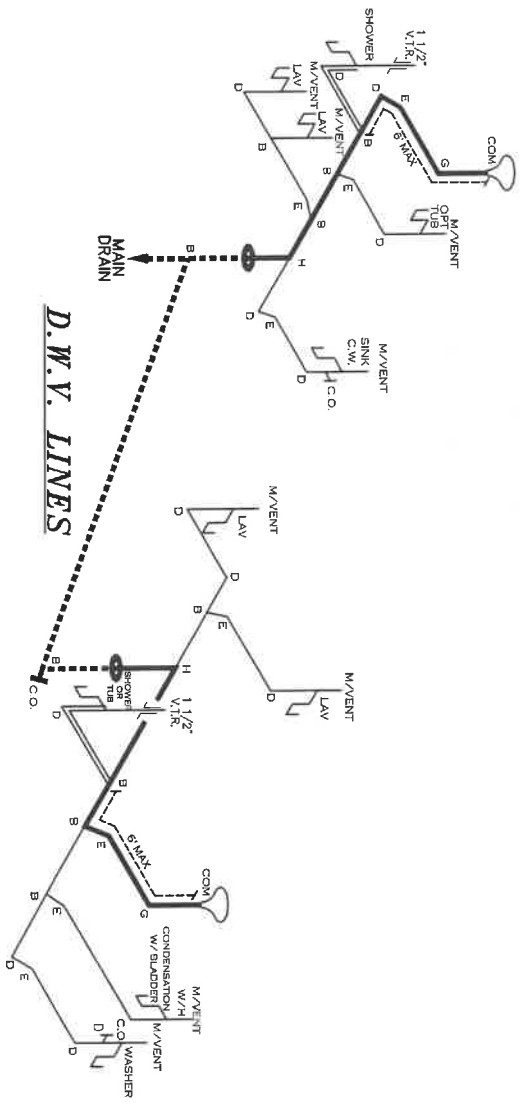
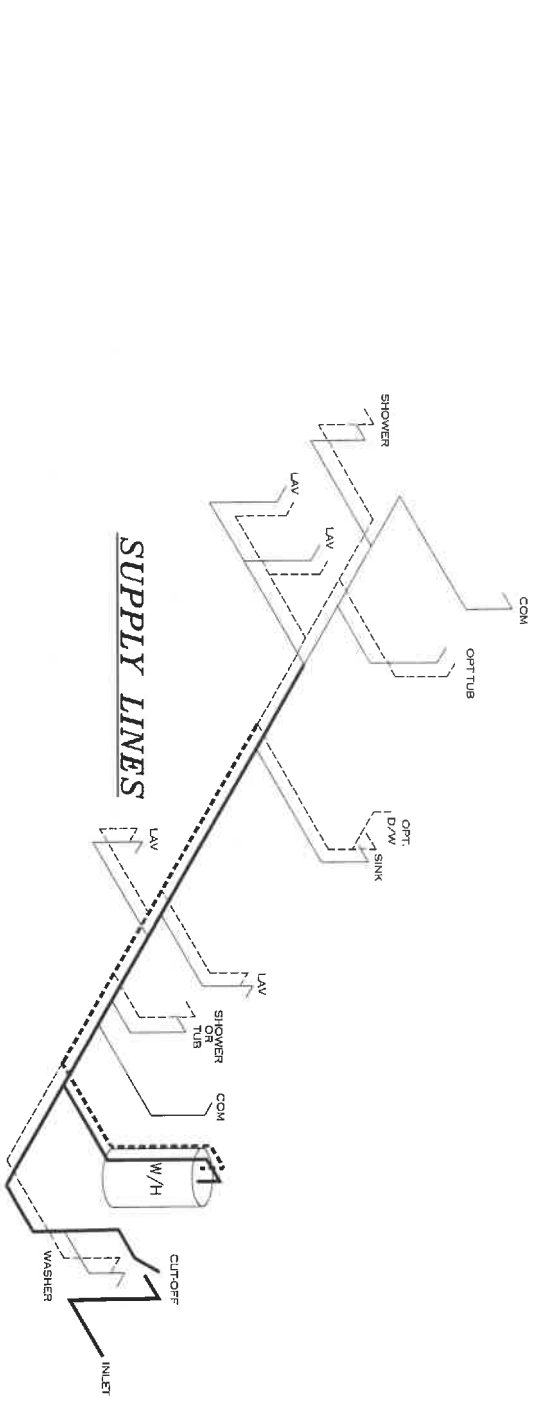
37M201

28 X 76 Grand Living

ELECTRICAL PLAN-06

NOTE:
DASHED LINES INDICATE HOT WATER
SOLID LINES INDICATE COLD WATER

— = 3/4"
— = 1/2"



LEGEND

A	SHORT TURN T-Y
B	LONG TURN T-Y
C	1/4 BEND
D	LONG SWEEP 1/4 BEND
E	45 ELL
F	DIR. SANITARY TEE
G	4X3 GLOSET ELL
H	D/DOUBLE ELL
I	45 V ELL
J	45 V ELL
K	LONG TURN STREET ELBOW
L	45 FTG ELL

DWV LINE SIZE CHART

—	= 3"
—	= 2"
—	= 1 1/2"

APPROVED

RTWG

MAY 22 2024
REVISED

FP-28-5491

Federal Manufactured
Home Construction
And Safety Standards

APPROVED

2077 SQ.FT. (STD PLAN "CONDITIONED")
N/A SQ.FT. (W/OPT. PORCH/RECESS "CONDITIONED")

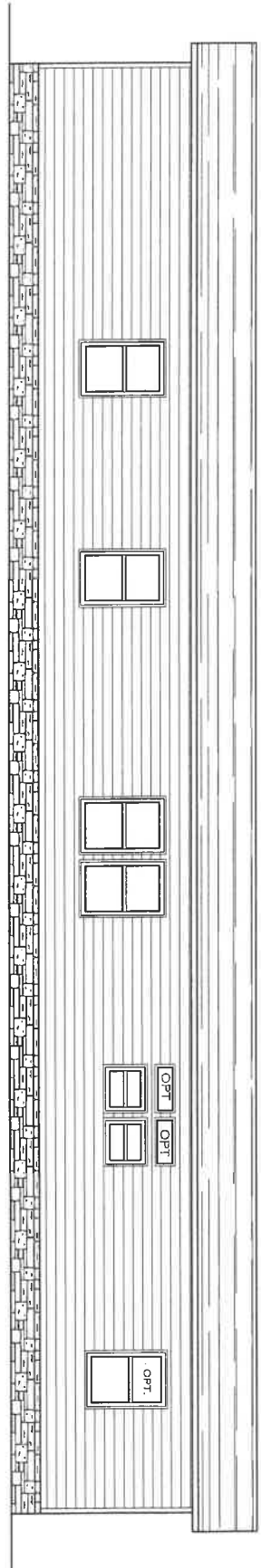
Chryon Built

Product Designer: J.P.P.T.S.

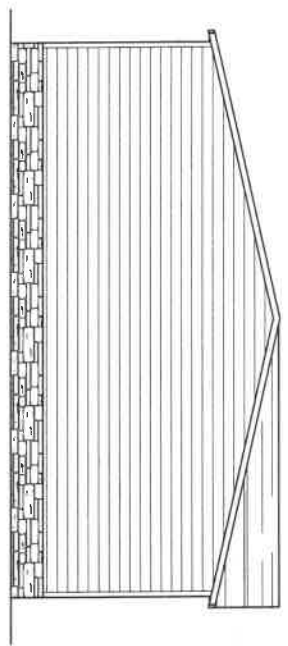
Model #: GRA287GAA | Drawing #: 37M201
Date: 1/27/23 | Scale: NA

D.W.V. and Supply Lines

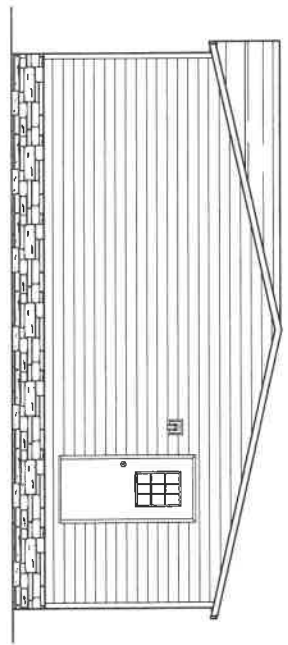
28 X 76 Grand Living



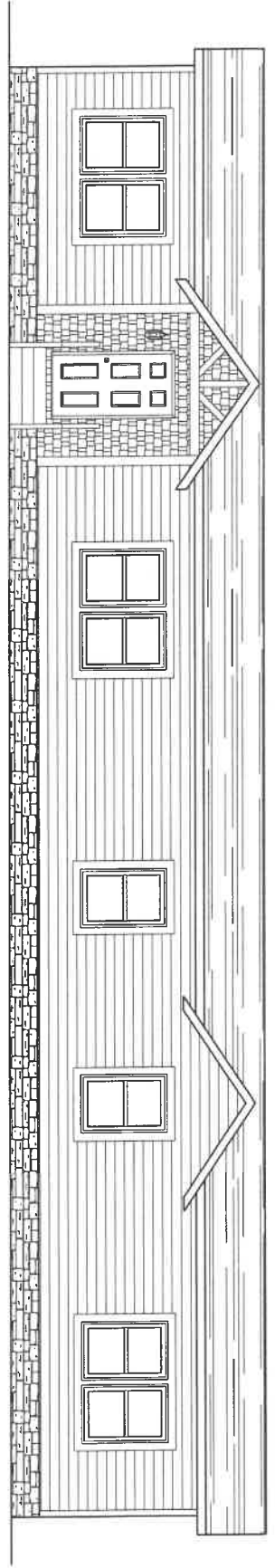
REAR ELEVATION



LEFT ELEVATION



RIGHT ELEVATION

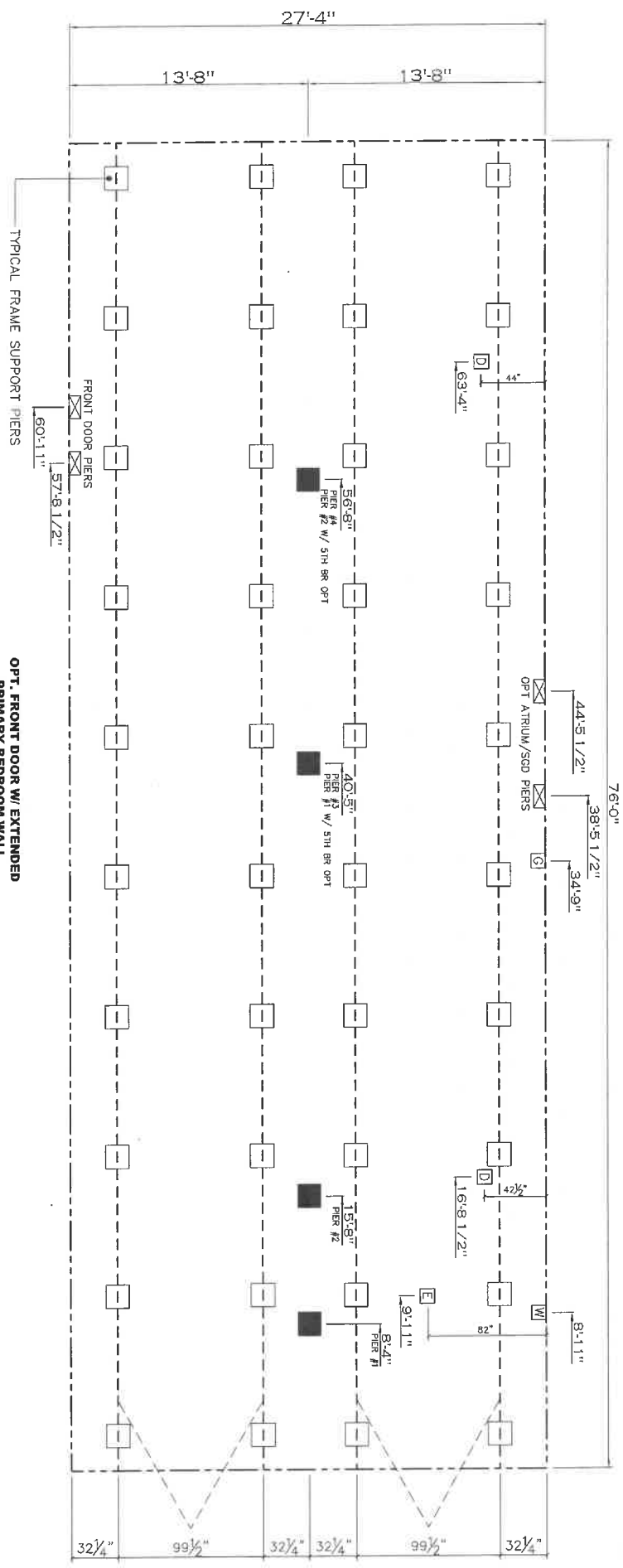


FRONT ELEVATION

2077 SQ.FT. (STD PLAN "CONDITIONED")	
N/A SQ.FT. (W/OPT. PORCH/RECESS "CONDITIONED")	
CMH	Model #: GR4267G4A
MANUFACTURERS	Date: 10/2/21 Scale: 1/8" = 1'-0"
Product Designer: F HARDWICK	Drawing #: 37M201
28 X 76 Grand Living	
ELEVATION	

20 lb ROOF LOAD		SIDEWALL OPENING (F1)							
SIDEWALL OPENING PER LOAD		REQUIRED PER LOAD (LBS)							
28" BOX WIDTH		3	4	5	6	8	10		
1175	1330	1485	1640	1950	2260				

*FOR 30 lb & 40 lb ROOF LOAD REFER TO TABLES 7b & 7c IN THE INSTALLATION MANUAL.



PIER LEGEND	
□	= SUPPORT UNDER WALLING OPENING
■	= SUPPORT AT WALLING COLUMN
▣	= SUPPORT UNDER WALLING WALL
■	= PIER PORCH/RECESSD CHAIR
□	= PIER MAIN BEAM
○	= PIER PERMETER
●	= TE-DOWN SUPPORT (QTY PER TAB. SEE DETAIL D-3 IN FOUND. PLAN.)

SERVICE DROP LEGEND	
E	= ELECTRICAL DROP
W	= WATER INLET
D	= DWV PLUMBING DROP
G	= GAS INLET

20 psf Roof Live Load		
Column Pier #	Distance from Hitch	Pier Load (lbs)
1	8,333	1903
2	15,667	1903
3	40,417	3731
4	56,667	3731

20 psf Roof Live Load		
Column Pier #	Distance from Hitch	Pier Load (lbs)
1	40,417	3731
2	56,667	3731

5TH BEDROOM OPT.

GENERAL NOTES:

- PIER LOADS SHOWN ARE TO BE USED TO SIZE THE FOOTINGS BELOW THE MARRIAGE WALL FOR COLUMN SUPPORT PIERS. REFER TO TABLES 6b AND 6c IN THE INSTALLATION MANUAL FOR LOAD ON FRAME PIER FOOTINGS FOR HOMES THAT DO NOT REQUIRE PERIMETER BLOCKING. REFER TO TABLES 7b AND 7c IN THE INSTALLATION MANUAL FOR LOAD ON FRAME PIER FOOTINGS THAT REQUIRE PERIMETER BLOCKING. REFER TO TABLES 10 AND 10a TO DETERMINE FOOTING SIZE FOR ALL PIERS.
- REFER TO TABLE 9 FOR PIER CONFIGURATION AND MAXIMUM ALLOWABLE HEIGHTS. CROSS REFERENCE THE PIER HEIGHT WITH THE MAXIMUM ALLOWABLE FLOOR HEIGHT LISTED IN THE FRAME TIEDOWN CHARTS (TABLE 18, 19, AND 20).
- FLOOR WIDTH SHOWN IS FOR STANDARD PRODUCT ONLY. CONTACT THE MFG PLANT FOR SPECIFICATIONS OF OPTIONS ORDERED.
- SERVICE DROP LOCATIONS IDENTIFIED ARE APPROXIMATE. THE MAXIMUM SPACING FOR FRAME SUPPORT PIERS FOR 8" I-BEAMS IS 8 FEET, 10" & 12" I-BEAMS ARE 10 FEET.

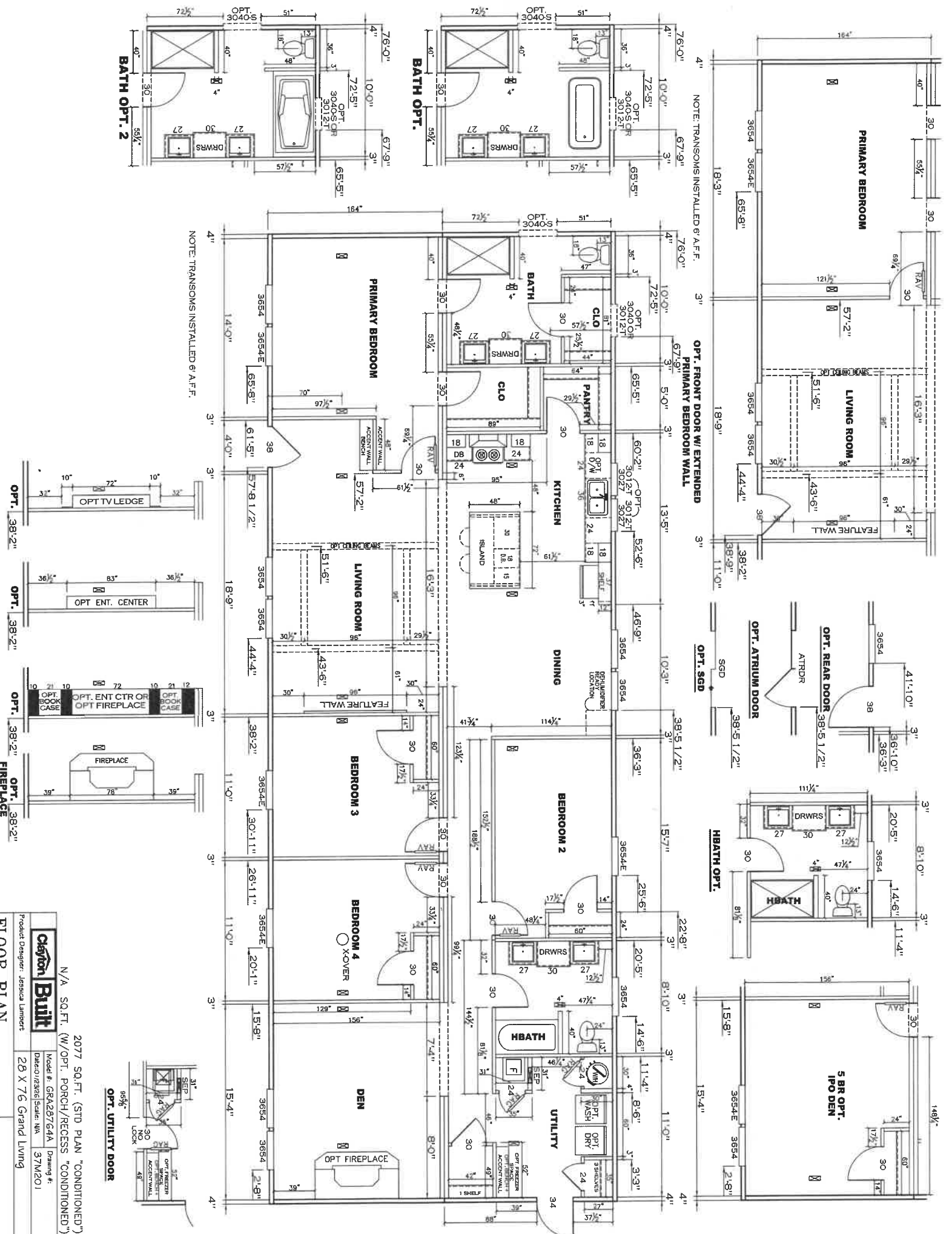
2077 SQ.FT. (STD PLAN "CONDITIONED")
 2077 SQ.FT. (W/OPT. PORCH/RECESS "CONDITIONED")

canon Built

Product Designer: JRP/ES Model #: GRA287G-4A Drawing #: D1811/2723/Scale NA 37M/201

PIER LOADS

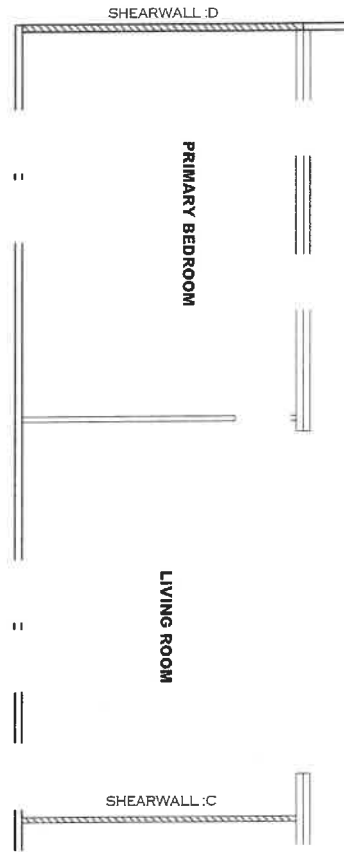
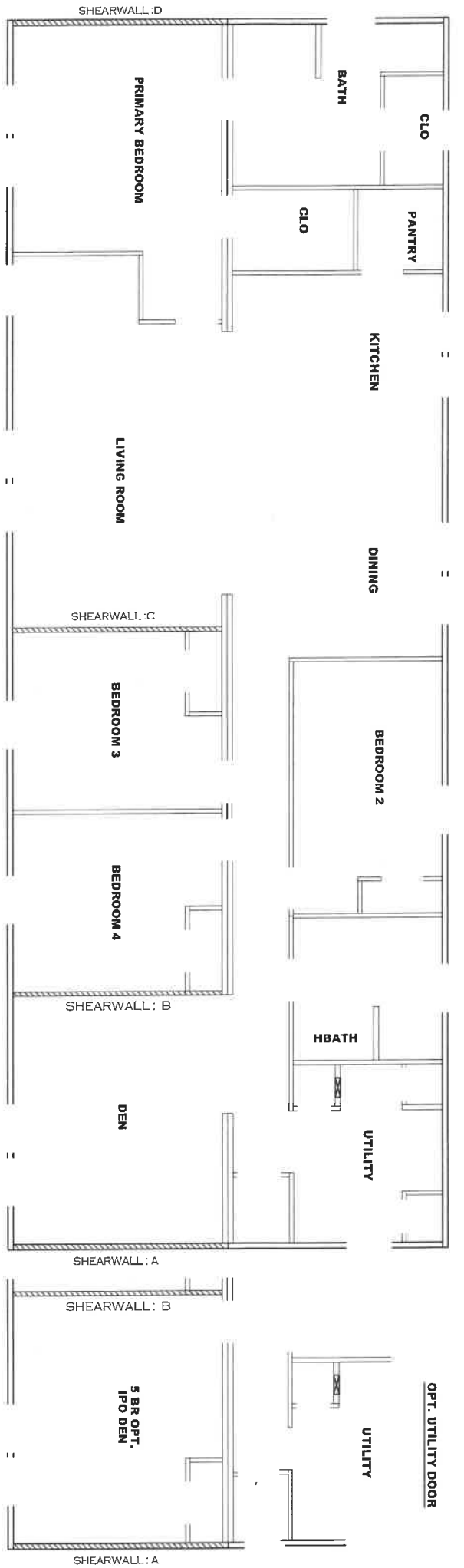
28 X 76 Grand Living



2077 SQ.FT. (STD PLAN "CONDITIONED")
 N/A SQ.FT. (W/OPT. PORCH/RECESS "CONDITIONED")

Product Designer: Jessica Lambert
Model #: GRA28764A
Date: 01/28/2018
Scale: 1/8" = 1'-0"
Sheet: 37M201

FLOOR PLAN



OPT. FRONT DOOR W/ EXTENDED
PRIMARY BEDROOM WALL

Model # 37M201
 Box Width = 164" Double wide
 Box Length = 78 ft 99.5" 12" MAIN BEAM No Crestory
 No Skylights No Original Dormer
 No Porches No Sunkn Floor
 Joist Size = #2 spf 2x6 Lags 9Mx3"
 Minimum Joist Spacing 16"

Version R13.19

Wind Zone 1 Standard Roof		Wind Zone 2 Standard Roof		Wind Zone 3 Standard Roof	
Shearwall Dist./Hitch	Length	PLF	# of Joists	Lags	Notes
A	0'	36"	162	2	1/1
B	15.79'	88"	162	2	1/1
C	38.29'	136"	162	2	2/1
D	76'	84"	162	2	1/1

Wind Zone 1 Standard Roof		Wind Zone 2 Standard Roof		Wind Zone 3 Standard Roof	
Diaphragm Construction:	Diaphragm Construction:	Diaphragm Construction:	Diaphragm Construction:	Diaphragm Construction:	Diaphragm Construction:
(3/8" sheathing only with 15 gax 1.5" at 57/10" oc. (197 pft) Chords: 2x4 SPF #3 Top Plate spliced w/2x4 MCP & 2x3 SPF Rail spliced w/ 2x4 MCP	(3/8" sheathing only with 15 gax 1.5" at 57/10" oc. (197 pft) Chords: 2x4 SPF #3 Top Plate spliced w/2x4 MCP & 2x3 SPF Rail spliced w/ 2x4 MCP	(3/8" sheathing only with 15 gax 1.5" at 57/10" oc. (197 pft) Chords: 2x4 SPF #3 Top Plate spliced w/2x4 MCP & 2x3 SPF Rail spliced w/ 2x4 MCP	(3/8" sheathing only with 15 gax 1.5" at 57/10" oc. (197 pft) Chords: 2x4 SPF #3 Top Plate spliced w/2x4 MCP & 2x3 SPF Rail spliced w/ 2x4 MCP	(3/8" sheathing only with 15 gax 1.5" at 57/10" oc. (197 pft) Chords: 2x4 SPF #3 Top Plate spliced w/2x4 MCP & 2x3 SPF Rail spliced w/ 2x4 MCP	(3/8" sheathing only with 15 gax 1.5" at 57/10" oc. (197 pft) Chords: 2x4 SPF #3 Top Plate spliced w/2x4 MCP & 2x3 SPF Rail spliced w/ 2x4 MCP

Diaphragm Construction:	Diaphragm Construction:	Diaphragm Construction:	Diaphragm Construction:
(3/8" sheathing only with 15 gax 1.5" at 57/10" oc. (197 pft) Chords: 2x4 SPF #3 Top Plate spliced w/2x4 MCP & 2x3 SPF Rail spliced w/ 2x4 MCP	(3/8" sheathing only with 15 gax 1.5" at 57/10" oc. (197 pft) Chords: 2x4 SPF #3 Top Plate spliced w/2x4 MCP & 2x3 SPF Rail spliced w/ 2x4 MCP	(3/8" sheathing only with 15 gax 1.5" at 57/10" oc. (197 pft) Chords: 2x4 SPF #3 Top Plate spliced w/2x4 MCP & 2x3 SPF Rail spliced w/ 2x4 MCP	(3/8" sheathing only with 15 gax 1.5" at 57/10" oc. (197 pft) Chords: 2x4 SPF #3 Top Plate spliced w/2x4 MCP & 2x3 SPF Rail spliced w/ 2x4 MCP

APPROVED



MAR 04 2025
REVISED

FP-28-5491

Federal Manufactured
Home Construction
And Safety Standards

APPROVED

2077 SQ.FT. (STD PLAN "CONDITIONED")
 N/A SQ.FT. (W/OPT. PORCH/RECESS "CONDITIONED")
Chrysalis Built
 Product Designer: J. PIPES
 Model #: GRA28764A
 Date: 11/27/23 Scale: 1/4" = 1'-0"
 Drawing #: 37M201
 28 X 76 Grand Living
SHEARWALL PAGE