

APPROVED



NOV 04 2024  
REVISED

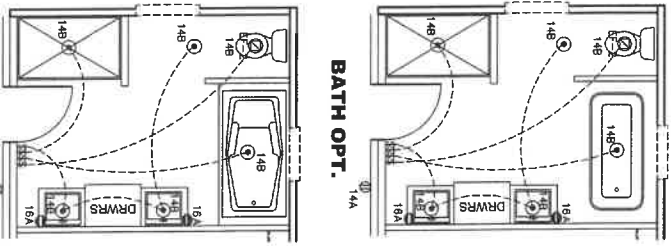
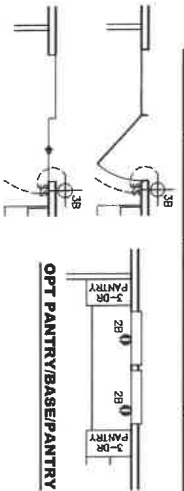
FP-28-5496

Federal Manufactured  
Home Construction  
And Safety Standards

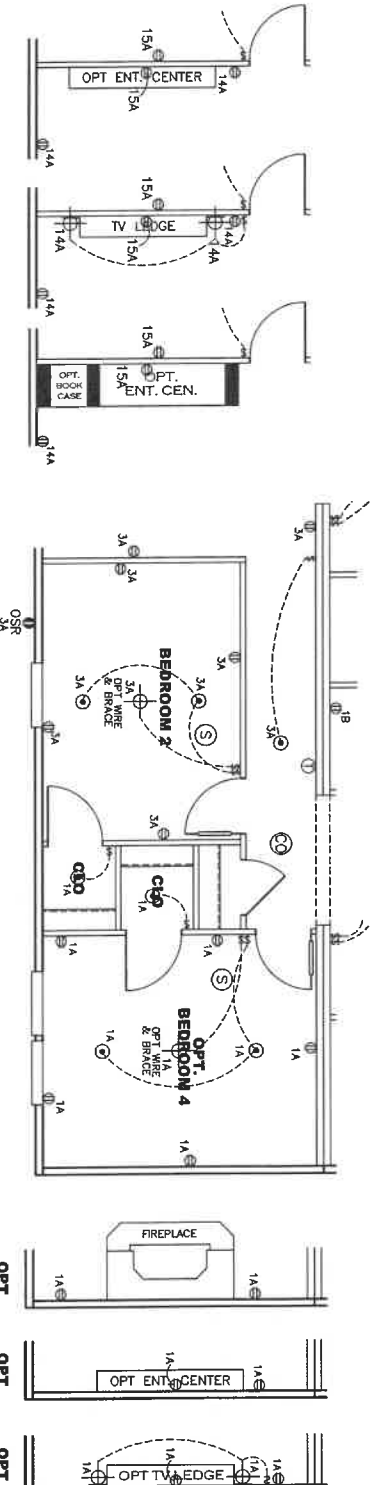
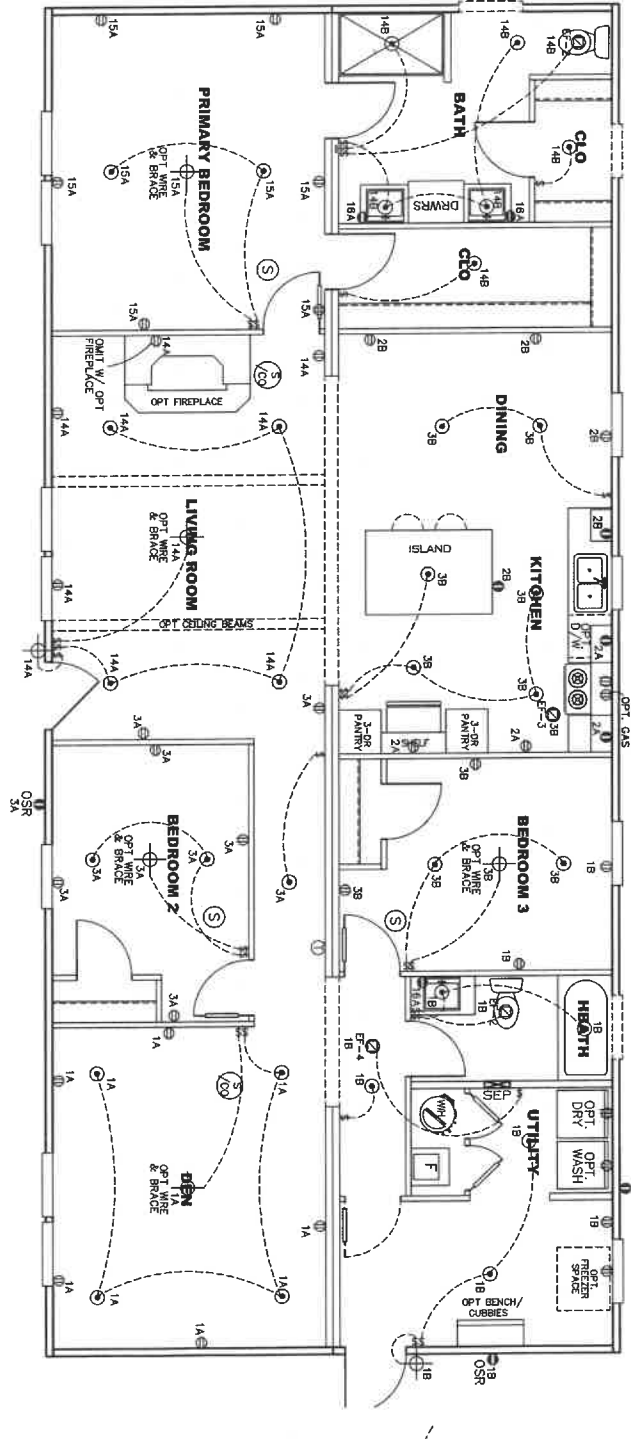
6

APPROVED

CIRCUIT	CIRCUIT #	WIRE	BREAKER	CIRCUIT	CIRCUIT #	WIRE	BREAKER	CIRCUIT	CIRCUIT #	WIRE	BREAKER
UPT/RECP	1A,3A,B,1A,8,15A	14-2	15-SP	WATER HEAT	4A,6B	SEE NOTE #8		BATHROOM	16A	12-2	20-SP
KITCHEN/RNNG	2A,2B	12-2	20-SP	RANGE	5B,7A	SEE NOTE #8		OPT G/D/SP	9B	SEE NOTE #8	
WASHER	12A	12-2	20-SP	OPT GAS RANGE	15B	SEE NOTE #8		OPT 3P/L	11A,B	SEE NOTE #8	
DRTR	5A,7B	SEE NOTE #8		FURNACE	6A,9A,B,10A,B	SEE NOTE #8		FREZZER	13A	SEE NOTE #8	
				OPT D/WASH	9A	SEE NOTE #8					
				SMOKE ALARM	4B	SEE NOTE #8					



BATH OPT. 2



OPT. OPT. OPT.

NOTES:

1. ALL CIRCUITS SHOWN ARE FOR REFERENCE AND MAY BE CHANGED BASED ON OPTIONAL COMPONENTS INSTALLED IN THE HOME.
2. REFER TO DAPIA MANUAL FOR SYMBOL CHART.
3. EITHER LIGHT OR RECEPTACLE MUST CONNECT TO SWITCH.
4. EF-1= 50 CFM EXHAUST FAN REQUIRED FOR THERMAL ZONE III. THERMAL ZONES I & II MAY USE FAN OR WINDOW W/1/5 SO. FT. OPENABLE GLASS.
5. EF-2= 50 CFM EXHAUST FAN REQUIRED THERMAL ZONE I, II, AND III.
6. EF-3= 100 CFM RANGE EXHAUST FAN, SWITCH AT HOOD.
7. EF-4= WHOLE HOUSE VENTILATION REQUIREMENTS PER DAPIA MANUAL.
8. REFER TO DAPIA MANUAL OR THE MFG. INSTALLATION INSTRUCTIONS FOR PROPER WIRE SIZE AND BREAKER SIZE FOR SPECIFIC APPLIANCE AND MODEL BEING INSTALLED.
9. ALL SMOKE ALARMS TO BE LOCATED ON THE CEILING.
10. CARBON MONOXIDE ALARMS ARE ONLY REQUIRED WHEN HOME HAS EITHER FUEL BURNING APPLIANCE, IS GARAGE READY OR ADDITIONAL INFORMATION.
11. DIMENSIONS SHOWN ON PRINT ARE APPROXIMATE AND TO BE USED ONLY AS A GUIDELINE.

1749 SQ.FT. (STD PLAN "CONDITIONED")  
N/A SQ.FT. (W/OPT. PORCH/RECESS "CONDITIONED")

**Camion Built**  
Product Designer: E HASKWICK

Model #: GR42D643A Drawing #: 37M200  
Date: 11/22/21 Scale: N/A

28 X 64 Grand Living

**ELECTRICAL PLAN-06**

APPROVED



AUG 23 2023

REVISED

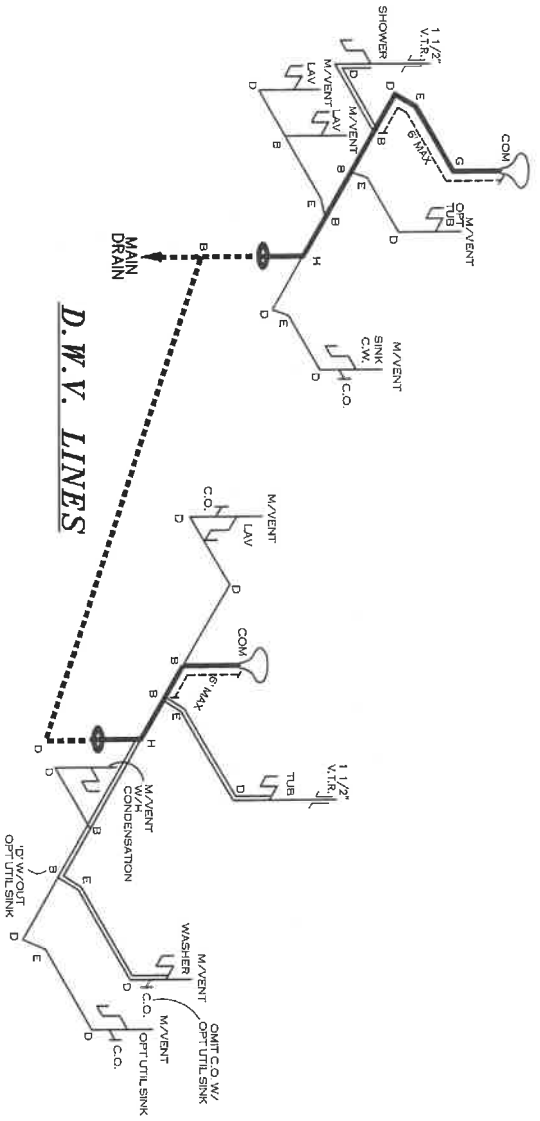
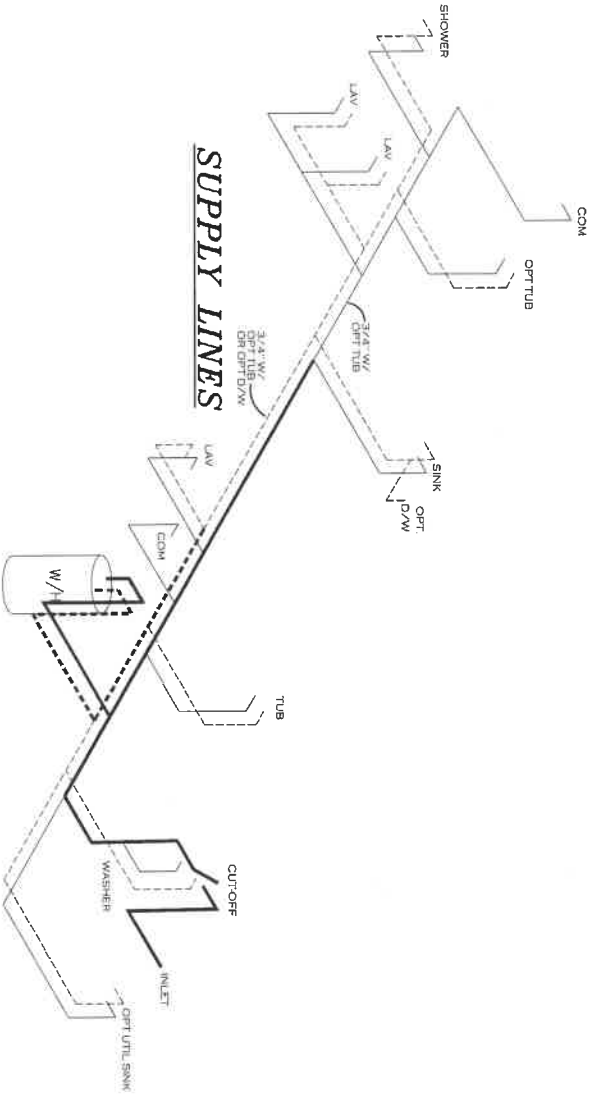
FP-28-5496

Federal Manufactured Home Construction And Safety Standards

APPROVED

NOTE  
DASHED LINES INDICATE HOT WATER  
SOLID LINES INDICATE COLD WATER

— = 3/4"  
— = 1/2"



HDL: 18.5 FEET - 3/4"  
HDL: 53.75 FEET - 1/2"  
GALLON VOLUME: 0.84

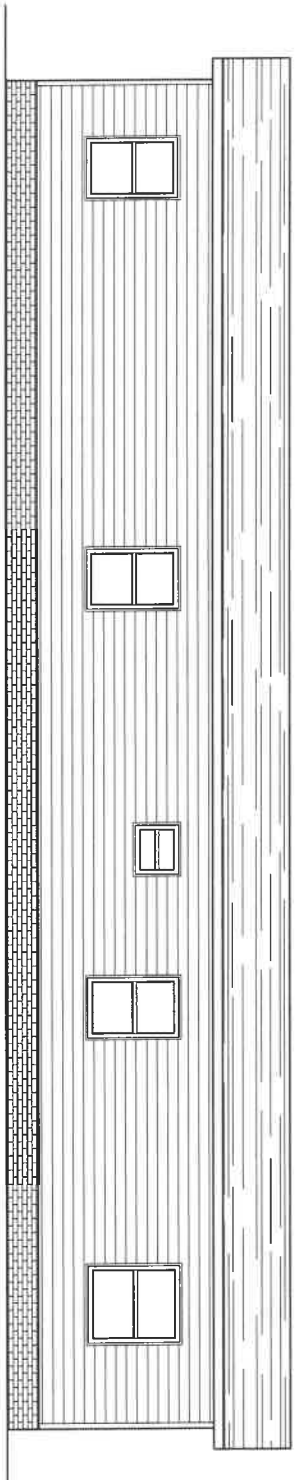
LEGEND	
A	SHORT TURN T-Y
B	LONG TURN T-Y
C	1/4 BEND
D	LONG SWEEP 1/4 BEND
E	45 ELL
F	DEL. SANITARY TEE
G	4x3 CLOSET ELL
H	DOUBLE ELL
I	22 1/2" ELL
J	45 Y
K	LONG TURN STREET ELBOW

DWV LINE SIZE CHART	
—	= 3"
—	= 2"
—	= 1 1/2"

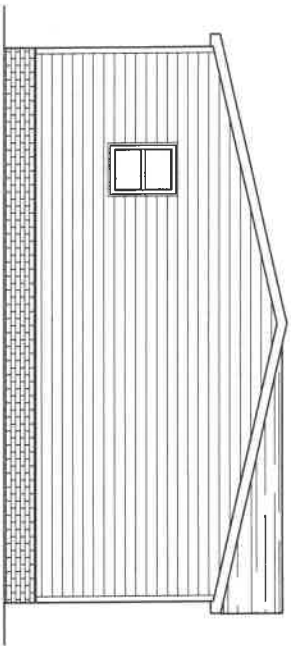
1749 SQ.FT. (STD PLAN "CONDITIONED")

1749 SQ.FT. (STD PLAN "CONDITIONED")	
N/A SQ.FT. (W/OPT. PORCH/RECESS "CONDITIONED")	
<b>CMH</b>	Model #: GRA2D643A Drawing #: 37M200
MANUFACTURING	Date: 11/22   Scale: N/A
Product Designer: E. HADSWICK	28 X 64 Grand Living

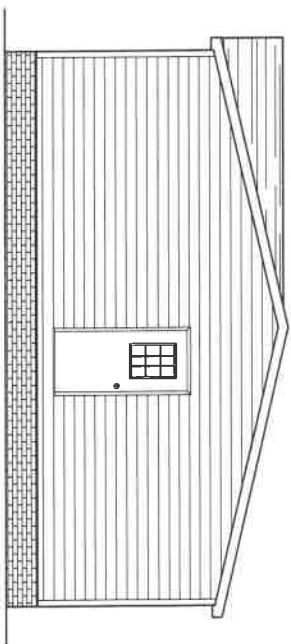
D.W.V. and Supply Lines



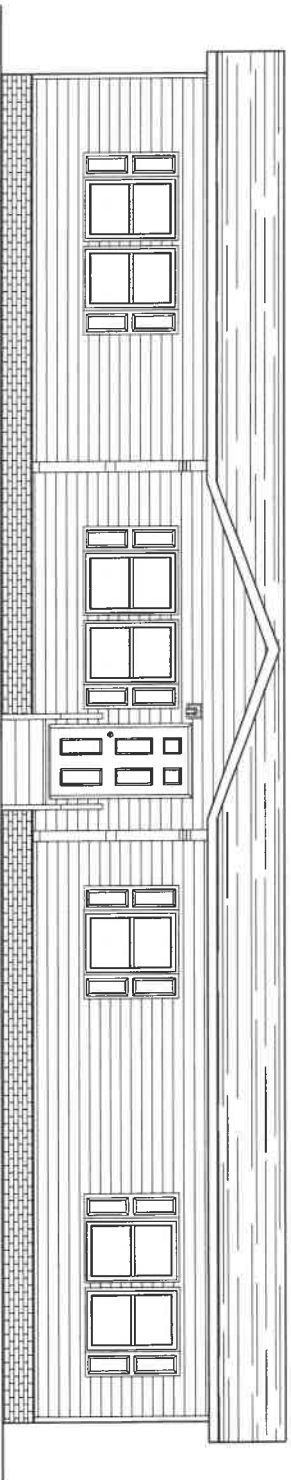
REAR ELEVATION



LEFT ELEVATION



RIGHT ELEVATION



FRONT ELEVATION

1749 SQ.FT. (STD PLAN "CONDITIONED")  
 N/A SQ.FT. (W/OPT. PORCH/RECESS "CONDITIONED")

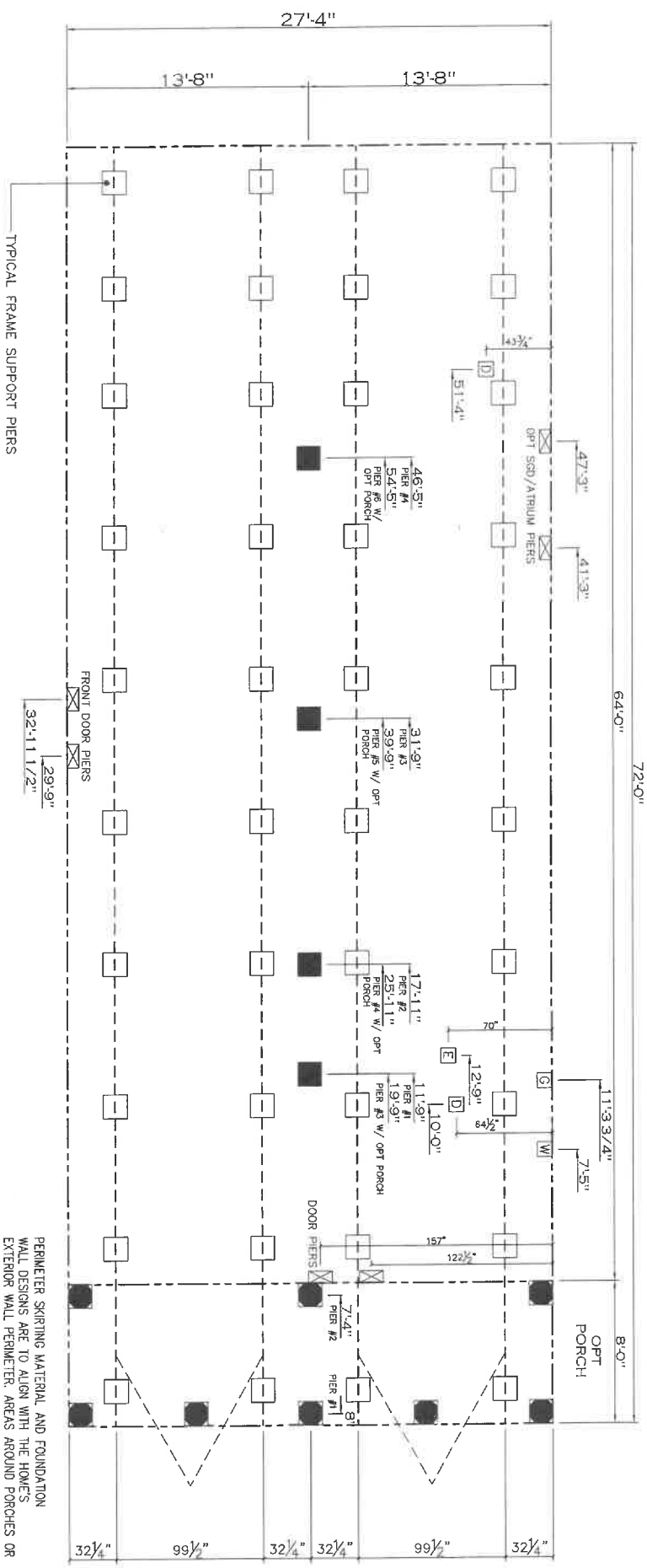
	Model #:	GRA28643A	Drawing #:
	Date: 1/1/21	Scale: N/A	37M200

Product Designer: E HARDWICK  
 28 X 64 Grand Living

ELEVATION

20 lb ROOF LOAD		SIDEWALL OPENING (FT)					
REQUIRED PIER LOAD (LBS)		3	4	5	6	8	10
28" BOX WIDTH		1175	1330	1485	1640	1950	2260

\*FOR 30 lb & 40 lb ROOF LOAD REFER TO TABLES 7b & 7c IN THE INSTALLATION MANUAL.



- GENERAL NOTES:**
- PIER LOADS SHOWN ARE TO BE USED TO SIZE THE FOOTINGS BELOW THE MARRIAGEWALL FOR COLUMN SUPPORT PIERS. REFER TO TABLES 6b AND 6c IN THE INSTALLATION MANUAL FOR LOAD ON FRAME PIER FOOTINGS FOR HOMES THAT DO NOT REQUIRE PERIMETER BLOCKING. REFER TO TABLES 7b AND 7c IN THE INSTALLATION MANUAL FOR LOAD ON FRAME PIER FOOTINGS THAT REQUIRE PERIMETER BLOCKING. REFER TO TABLES 10 AND 10a TO DETERMINE FOOTING SIZE FOR ALL PIERS.
  - REFER TO TABLE 9 FOR PIER CONFIGURATION AND MAXIMUM ALLOWABLE HEIGHTS. CROSS REFERENCE THE PIER HEIGHT WITH THE MAXIMUM ALLOWABLE FLOOR HEIGHT LISTED IN THE FRAME TIEDOWN CHARTS (TABLE 18, 19, AND 20).
  - FLOOR WIDTH SHOWN IS FOR STANDARD PRODUCT ONLY. CONTACT THE MFG PLANT FOR SPECIFICATIONS OF OPTIONS ORDERED.
  - SERVICE DROP LOCATIONS IDENTIFIED ARE APPROXIMATE.
  - THE MAXIMUM SPACING FOR FRAME SUPPORT PIERS FOR 8" I-BEAMS IS 8 FEET, 10" & 12" I-BEAMS ARE 10 FEET.

**PIER LEGEND**

- = SUPPORT UNDER MAINING OPENING
- = SUPPORT AT MAINING COLUMN
- ▣ = SUPPORT UNDER MAINING OPENING
- ▤ = PER PERCH/RECESSED ENTRY
- ▥ = PER MAIN BEAM
- ▧ = PER PERIMETER
- = THE-DOWN SUPPORT (QTY PER TR. W. SEE DETAIL D-6 IN FOUND. PKG.)

**SERVICE DROP LEGEND**

- E = ELECTRICAL DROP
- W = WATER INLET
- D = DWV PLUMBING DROP
- G = GAS INLET

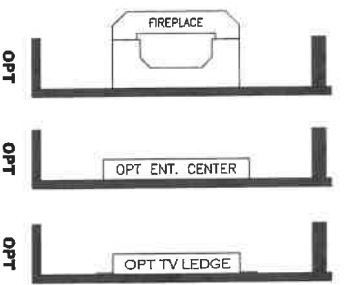
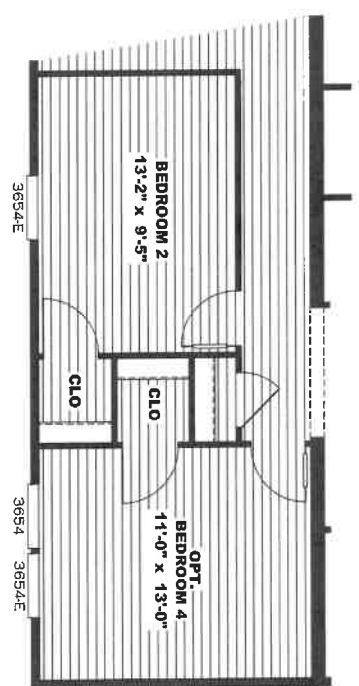
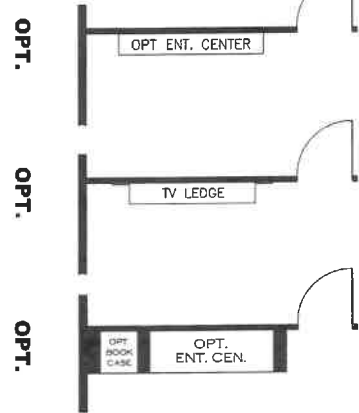
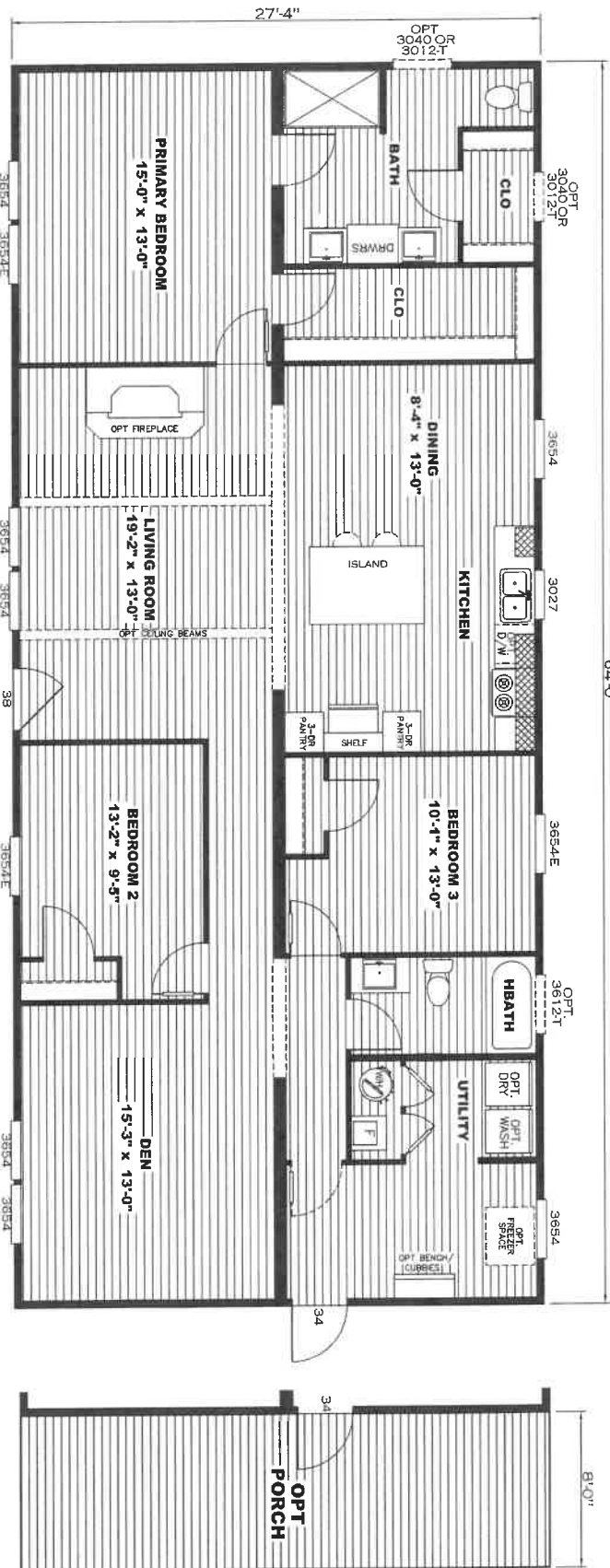
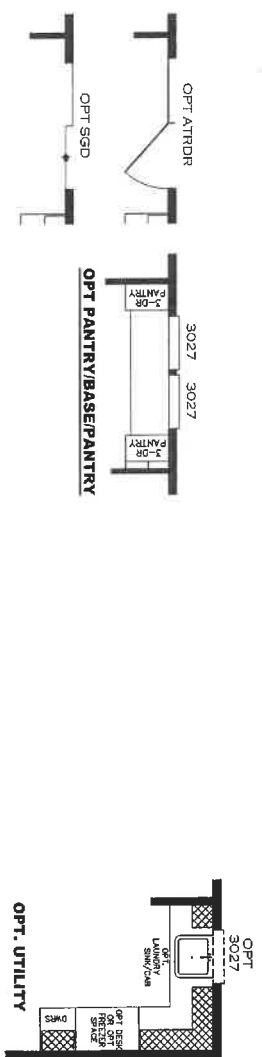
Column	Distance from Hitch	Pier Load (lbs)
1	11.75	1664
2	17.917	1664
3	31.75	3407
4	46.417	3407

Column	Distance from Hitch	Pier Load (lbs)
1	0.667	1767
2	7.333	1767
3	19.75	1664
4	23.917	1664
5	39.75	3407
6	54.417	3407

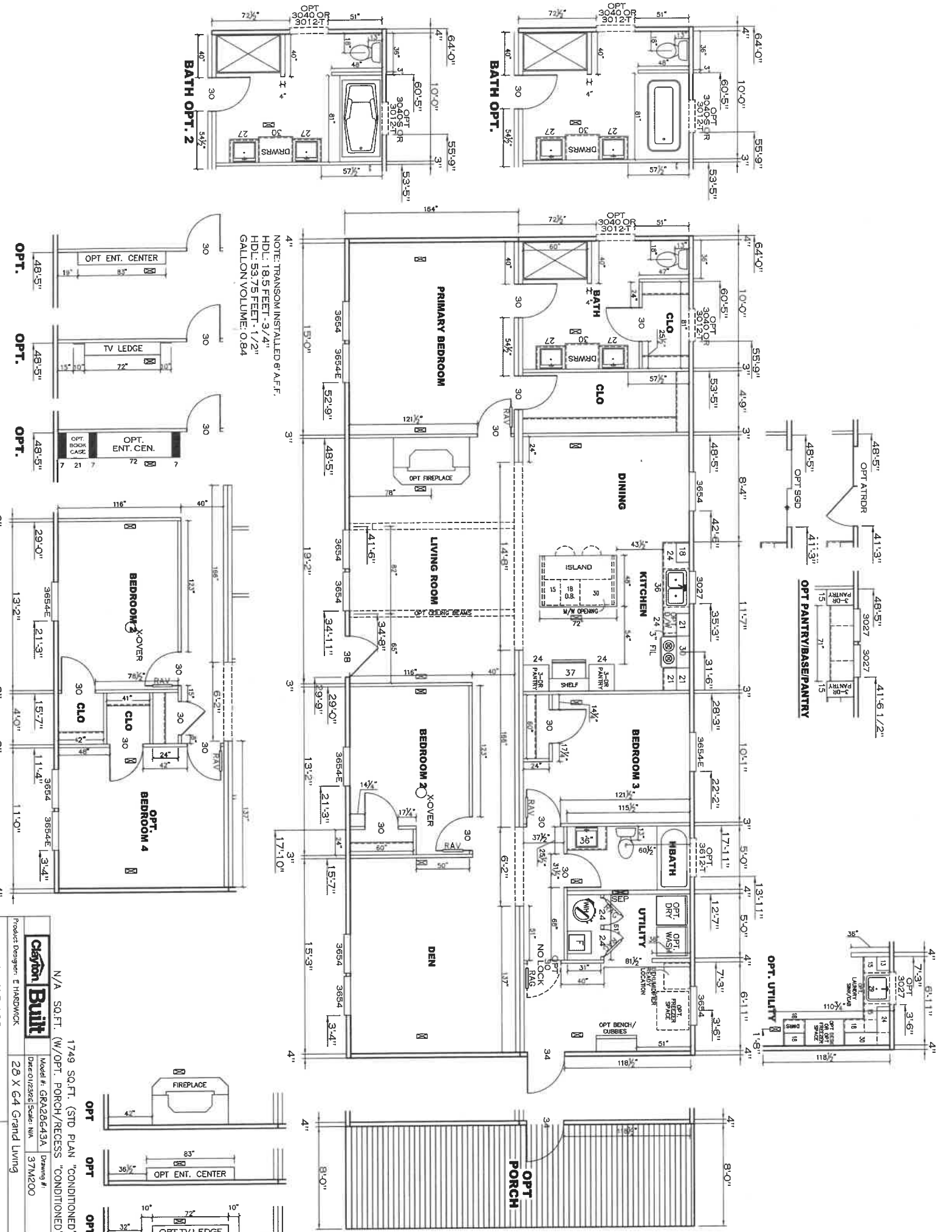
WITH OPT PORCH

PERIMETER SKIRTING MATERIAL AND FOUNDATION WALL DESIGNS ARE TO ALIGN WITH THE HOME'S EXTERIOR WALL PERIMETER. AREAS AROUND PORCHES OR RECESSED ENTRIES ARE TO BE SEPARATED TO PREVENT MOISTURE FROM ACCUMULATING BENEATH THE HOME.

1749 SQ.FT. (STD PLAN "CONDITIONED")  
 N/A SQ.FT. (W/OPT. PORCH/RECESS "CONDITIONED")  
**Chryslar Built**  
 Product Designer: E. HAZDMICK  
 Model #: GR426G43A Drawing #: 37M200  
 Date: 1/12/11 Scale: 1/4" = 1'-0"  
**PIER LOADS**  
 28 X 64 Grand Living



28 X 64 Grand Living  
 Model #: GRN28G43A  
 Drawing #: 37M200



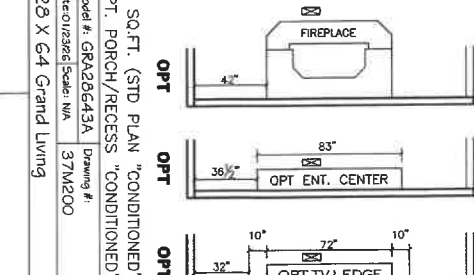
NOTE: TRANSOM INSTALLED 6' A.F.F.  
 HDL: 18.5 FEET - 3/4"  
 HDL: 53.75 FEET - 1/2"  
 GALLON VOLUME: 0.84

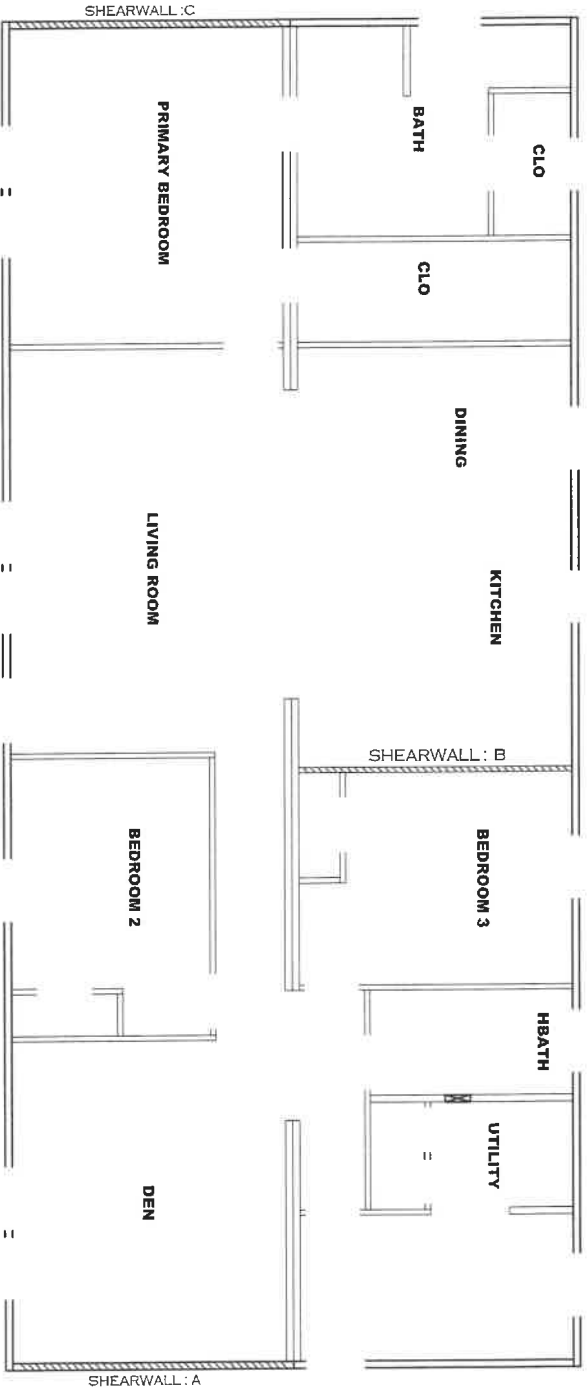
**CLAYTON BUILT**  
 Product Designer: E HARDWICK

N/A SQ.FT. (W/OPT. PORCH/RECESS "CONDITIONED")  
 1749 SQ.FT. (STD PLAN "CONDITIONED")

Model #: GR426G43A Drawing #: 37M200  
 Date: 01/23/2025 Scale: N/A

**FLOOR PLAN**  
 28 X 64 Grand Living





**Model # 37M200**  
 Box Width = 164 " Double wide  
 Box Length = 64 ft 99.5" 12" MIN. IBEAM No Offset Box  
 No Skylights No Clerestory  
 No Porches No Origami Dormer  
 Joist Size = #2 spf 2x6 Lags 9Mx3" No Sunken Floor  
 No Parapet Roof

**Version R13.19**

Minimum Joist Spacing 16"

**Wind Zone 1 Standard Roof**  
 Diaphragm Construction: Ceiling board only [152 pif] Chords: 2x4 SPF #3  
 Top Plate spliced w/2x4 MCP & 2x3 SPF Rail

Shearwall Dist./Hitch	Length	PLF	# of Joists	Lags	Notes
A	0'	64"	162	2	1/1
B	28.38'	144"	162	2	2/1
C	64'	80"	162	2	1/1

**Wind Zone 2 Standard Roof**  
 Diaphragm Construction: (3/8" sheathing only with 15 gax 1.5" at 5'110" oc.  
 (197 pif) Chords: 2x4 SPF #3 Top Plate spliced  
 w/2x4 MCP & 2x3 SPF Rail spliced w 2x4 MCP

Shearwall Dist./Hitch	Length	PLF	# of Joists	Lags	Notes
A	0'	120"	425	2	4/3
B	28.38'	Full	425	2	3/3
C	64'	Full	425	2	5/5

**Wind Zone 3 Standard Roof**  
 Diaphragm Construction: (3/8" sheathing only with 15 gax 1.5" at 5'110" oc.  
 (197 pif) Chords: 2x4 SPF #3 Top Plate spliced  
 w/2x4 MCP & 2x3 SPF Rail spliced w 2x4 MCP

Shearwall Dist./Hitch	Length	PLF	# of Joists	Lags	Notes
A	0'	120"	425	2	4/3
B	28.38'	Full	515	2	4/4
C	64'	Full	425	2	5/5

**Wind Zone 1 Standard Roof**  
 Diaphragm Construction: (3/8" sheathing only with 15 gax 1.5" at 5'110" oc.  
 (197 pif) Chords: 2x4 SPF #3 Top Plate spliced  
 w/2x4 MCP & 2x3 SPF Rail spliced w 2x4 MCP

Shearwall Dist./Hitch	Length	PLF	# of Joists	Lags	Notes
A	0'	144"	162	2	2/1
C	64'	144"	162	2	2/1

\* Denotes that indicated shearwall is over full depth/width front steel chassis header.

**APPROVED**  
**HWG**  
 FEB 17 2025  
 REVISED  
 FP-28-5496  
 Federal Manufactured  
 Home Construction  
 And Safety Standards

1749 SQ.FT. (STD PLAN "CONDITIONED")  
 N/A SQ.FT. (W/OPT. PORCH/RECESS "CONDITIONED")  
**Clayton Built**  
 Product Designer: E.HARDWICK  
 Model #: GRA28G43A  
 Date: 1/12/21 Scale: NA  
 Drawing #: 37M200  
 28 X 64 Grand Living