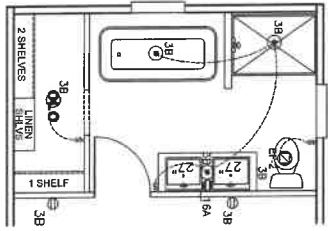


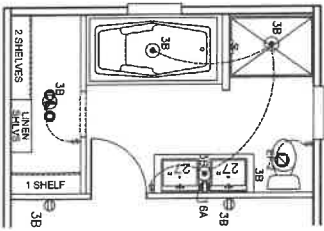
CIRCUIT	CIRCUIT #	WIRE	BREAKER	CIRCUIT	CIRCUIT #	WIRE	BREAKER	CIRCUIT	CIRCUIT #	WIRE	BREAKER
LIGHT/RECFER	1A, 1B, 3A, 3B	14-2	15-SP	WATER HEATER	4A, 6B	SEE NOTE #8	BATHROOM	16A	12-2	20-SP	
KITCHEN/COOKING	2A, 2B	12-2	20-SP	RANGE	5B, 7A	SEE NOTE #8	OPT. GROUND	9B	SEE NOTE #8		
WASHER	12A	12-2	20-SP	OPT. GAS VALVE	15B	SEE NOTE #8	OPT. GYM	11A, B	SEE NOTE #8		
DRYER	9A, 7B	SEE NOTE #8		FURNACE	8A, 9A, B, 10A, B	SEE NOTE #8	W/PLANT	N/A	SEE NOTE #8		
				DRYER	3A	SEE NOTE #8	FREEZER	N/A	SEE NOTE #8		
					4B	SEE NOTE #8					

**NOTES:**

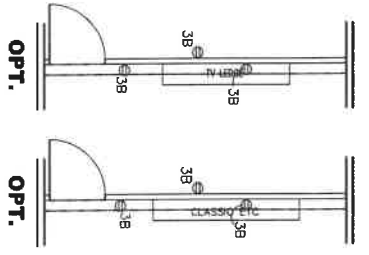
1. ALL CIRCUITS SHOWN ARE FOR REFERENCE AND MAY BE CHANGED BASED ON OPTIONAL COMPONENTS INSTALLED IN THE HOME.
2. REFER TO DAPIA MANUAL FOR SYMBOL CHART.
3. EITHER LIGHT OR RECEPTACLE MUST CONNECT TO SWITCH.
4. EF-1= 90 CFM EXHAUST FAN REQUIRED FOR THERMAL ZONE II. THERMAL ZONES I & II MAY USE FAN OR WINDOW W/1.5 SQ. FT. OPENABLE GLASS.
5. EF-2= 90 CFM EXHAUST FAN REQUIRED THERMAL ZONE I, II, AND III.
6. EF-3= 100 CFM RANGE EXHAUST FAN, SWITCH AT HOOD.
7. EF-4= WHOLE HOUSE VENTILATION REQUIREMENTS PER DAPIA MANUAL.
8. REFER TO DAPIA MANUAL OR THE MFG. INSTALLATION INSTRUCTIONS FOR PROPER WIRE SIZE AND BREAKER SIZE FOR SPECIFIC APPLIANCE AND MODEL BEING INSTALLED.
9. ALL SMOKE ALARMS TO BE LOCATED ON THE CEILING.
10. CARBON MONOXIDE ALARMS ARE ONLY REQUIRED WHEN HOME HAS EITHER FUEL BURNING APPLIANCE OR GAS READY OR IS BASEMENT READY. REFERENCE DAPIA MANUAL FOR ADDITIONAL INFORMATION.
11. DIMENSIONS SHOWN ON PRINT ARE APPROXIMATE AND TO BE USED ONLY AS A GUIDELINE.



**BATH OPT. 1**

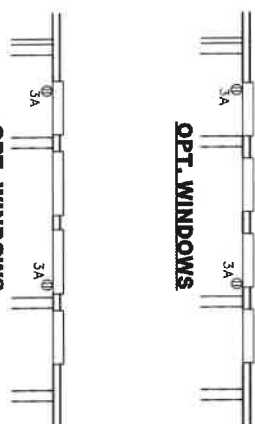


**BATH OPT. 2**



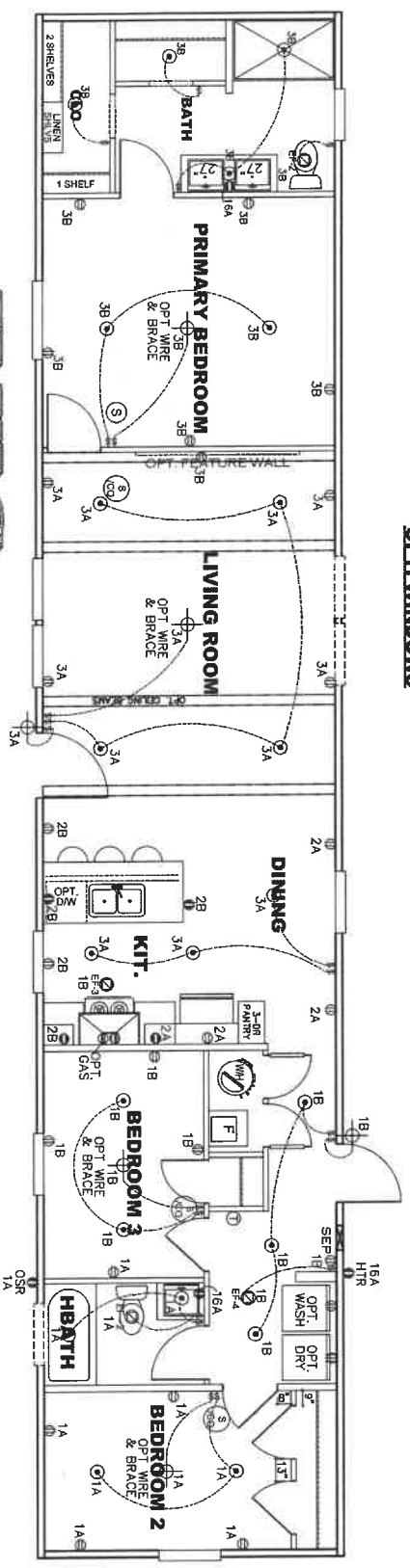
**OPT. 1.**

**OPT. 2.**



**OPT. WINDOWS**

**OPT. WINDOWS**



**OPT. DOOR**

**APPROVED**

**HTWG**

JAN 13 2025

REVISED

Federal Manufactured Home Construction And Safety Standards 6

**APPROVED**

1080/1140 SQ.FT. (STD PLAN "CONDITIONED")  
 N/A SQ.FT. (W/OPT. PORCH/RECESS "CONDITIONED")

**Caston Built**

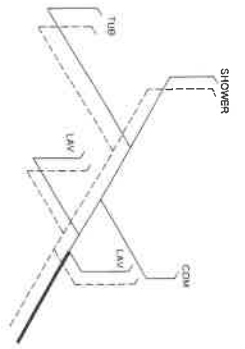
Product Designer: E HARDWICK

Model #: GR416723A     Drawing #: 375164-1676  
 Date: 9/23     Scale: N.T.S.

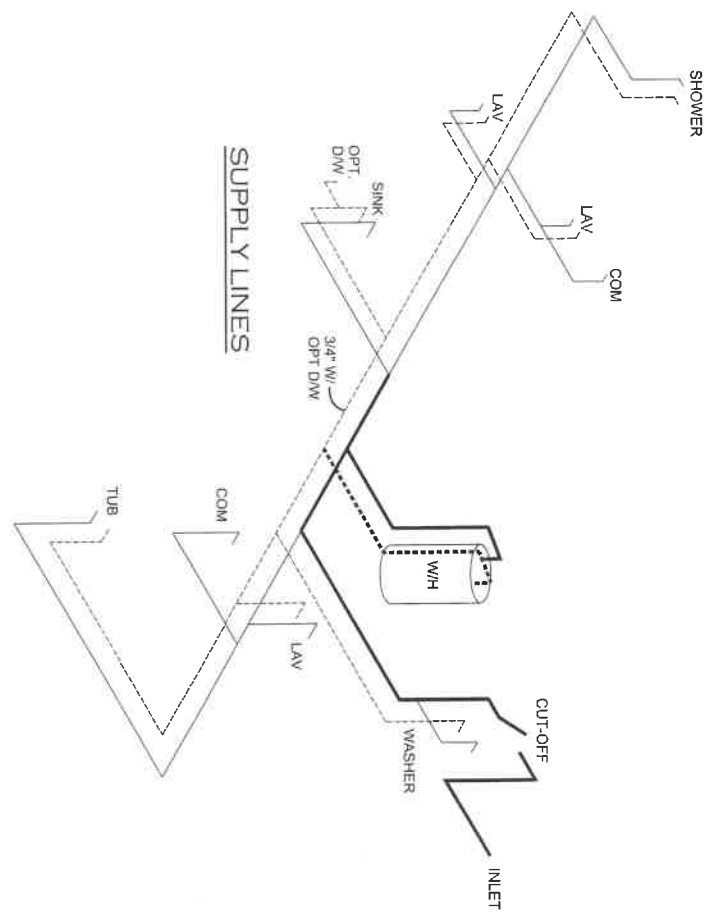
**ELECTRICAL PLAN-06**

NOTE:  
DASHED LINES INDICATE HOT WATER  
SOLID LINES INDICATE COLD WATER

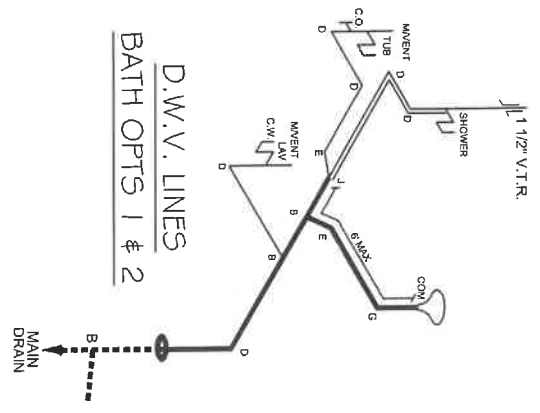
— = 3/4"  
— = 1/2"



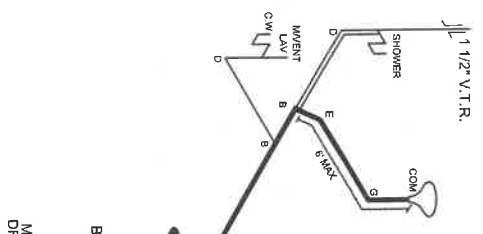
SUPPLY LINES  
BATH OPTS 1 & 2



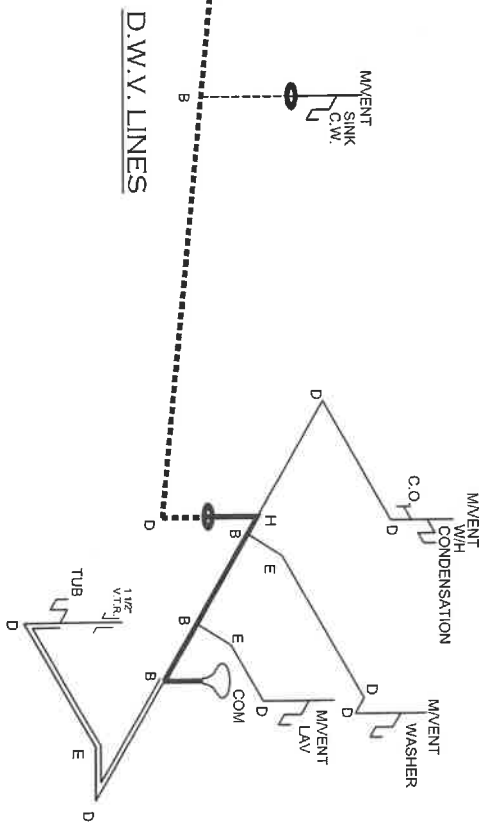
SUPPLY LINES



D.W.V. LINES  
BATH OPTS 1 & 2



D.W.V. LINES



D.W.V. LINES

LEGEND

A	SHORT TURN 1/4"
B	LONG TURN 1/4"
C	1/4 BEND
D	LONG SWEEP 1/4 BEND
E	45 ELL
F	DBL. SANITARY TEE
G	4X3 CLOSET ELL
H	DOUBLE ELL
I	22 1/2" ELL
J	45° V
K	LONG TURN STREET ELBOW

DWV LINE SIZE CHART

—	3"
—	2"
—	1 1/2"

APPROVED



SEPT 21 2023

Federal Manufactured  
Home Construction  
And Safety Standards 6

APPROVED

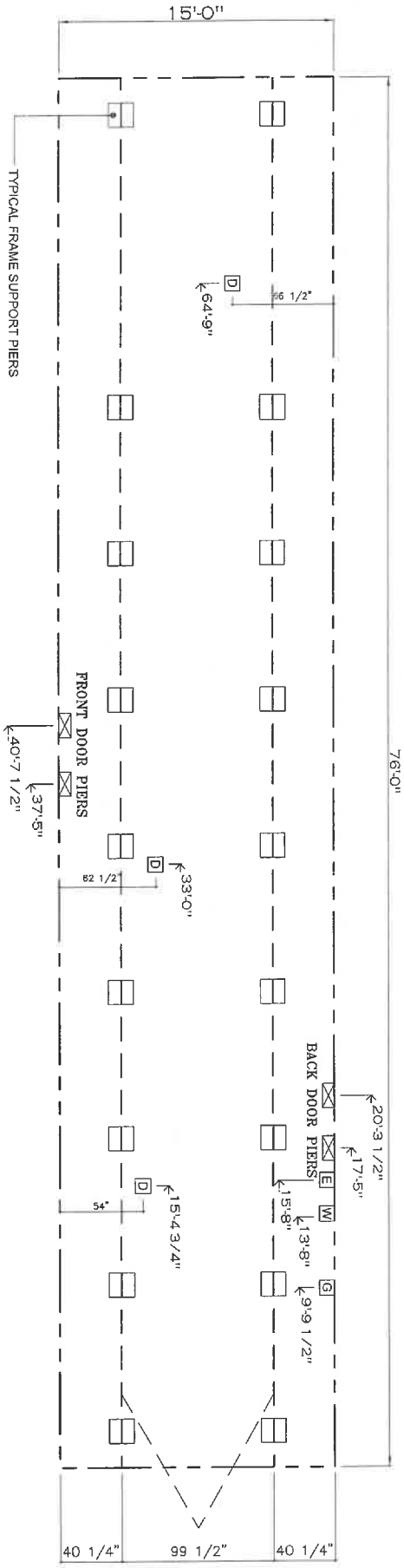
1080/1140 SQ.FT. (STD PLAN "CONDITIONED")  
N/A SQ.FT. (W/OPT. PORCH/RECESS "CONDITIONED")

CMH	Model #: GRA16723A	Drawing #:
MANUFACTURING	Date: 9/23	Scale: N.T.S.
Product Designer: E HARDWICK	1 G X 76 Grand Living	

D.W.V. and Supply Lines

20 lb ROOF LOAD		SIDEWALL OPENING (FT)					
REQUIRED PIER LOAD (LBS)		3	4	5	6	8	10
16 BOX WIDTH		1244	1413	1581	1750	2088	2425

\*FOR 30 lb & 40 lb ROOF LOAD REFER TO TABLES 7 & 7a IN THE INSTALLATION MANUAL.



- NOTES:
- REFER TO TABLES 6 AND 6a IN THE INSTALLATION MANUAL FOR LOAD ON FRAME PIER FOOTINGS FOR HOMES THAT DO NOT REQUIRE PERIMETER BLOCKING. REFER TO TABLES 7 AND 7a IN THE INSTALLATION MANUAL FOR LOAD ON FRAME PIER FOOTINGS FOR HOMES THAT REQUIRE PERIMETER BLOCKING. REFER TO TABLES 10 AND 10a TO DETERMINE FOOTING SIZE FOR ALL PIERS.
  - REFER TO TABLE 9 FOR PIER CONFIGURATION AND MAXIMUM ALLOWABLE HEIGHTS. CROSS REFERENCE THE PIER HEIGHT WITH THE MAXIMUM ALLOWABLE FLOOR HEIGHT LISTED IN THE FRAME TIEDOWN CHARTS (TABLE 16, 19, AND 20).
  - THE MAXIMUM SPACING FOR FRAME SUPPORT PIERS FOR 8" I-BEAMS IS 8 FEET, 10" & 12" I-BEAMS IS 10 FEET.
  - SERVICE DROP LOCATIONS IDENTIFIED ARE APPROXIMATE.
  - FLOOR WIDTH SHOWN IS FOR STANDARD PRODUCT ONLY. CONTACT THE MFG FACILITY FOR SPECIFICATIONS OF OPTIONS ORDERED.

SERVICE DROP LEGEND	
[E]	= ELECTRICAL DROP
[W]	= WATER INLET
[D]	= DWV PLUMBING DROP
[G]	= GAS INLET

PIER LEGEND	
[□]	= PIER MAIN BEAM
[▣]	= PIER PERIMETER
[■]	= PIER PORCH/RECESS ENTRY

1080/1140 SQ.FT. (STD PLAN "CONDITIONED")  
 N/A SQ.FT. (W/OPT. PORCH/RECESS "CONDITIONED")

Product Designer: E HARDWICK

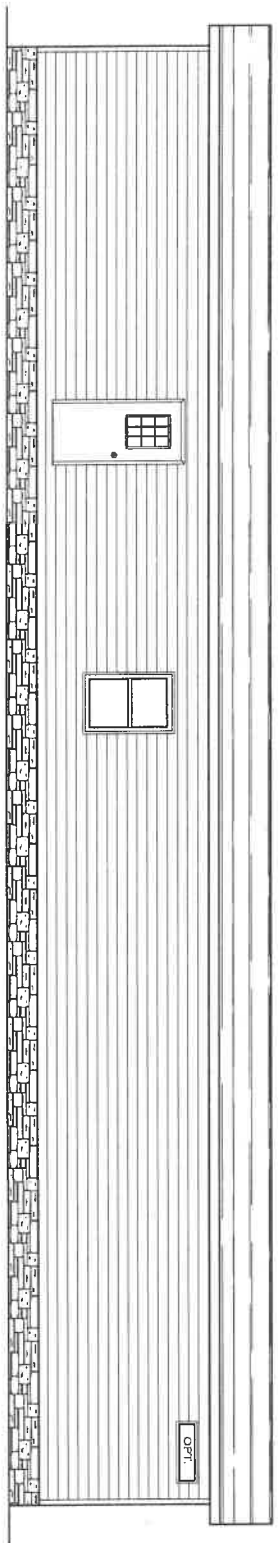
**Rayton Built**

Model #: GRA16723A      Drawing #: 375164-1676  
 Date: 9/23      Scale: N.T.S.

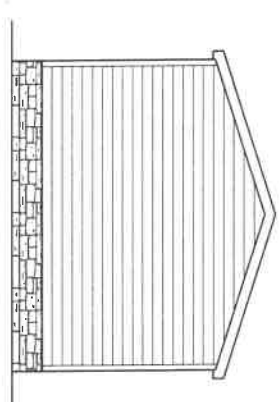
**FRAME PIERS**

16 X 76 Grand Living

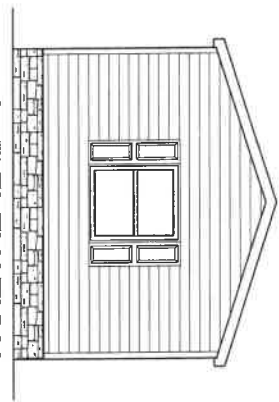




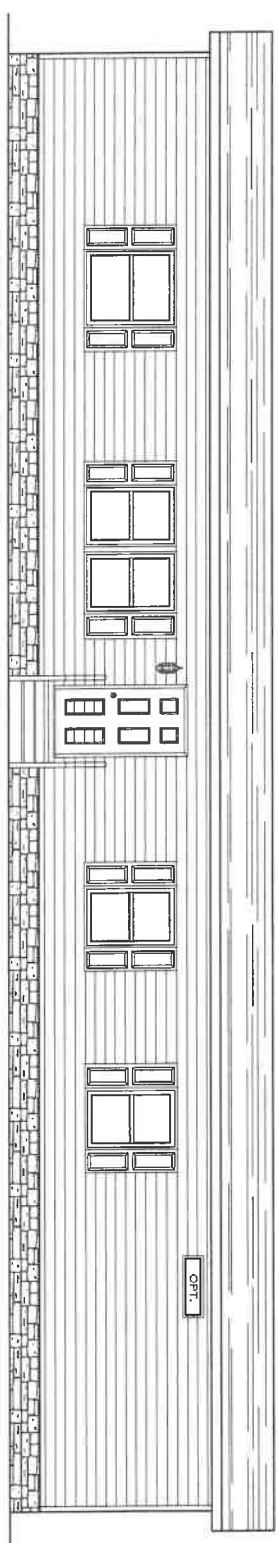
REAR ELEVATION



LEFT ELEVATION



RIGHT ELEVATION



FRONT ELEVATION

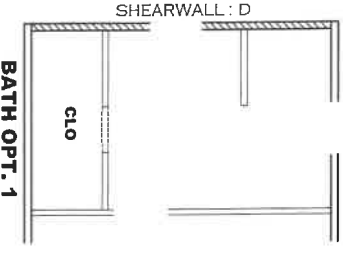
1080/1140 SQ.FT. (STD PLAN "CONDITIONED")  
 N/A SQ.FT. (W/OPT. PORCH/RECESS "CONDITIONED")

**CMH**  
 MANUFACTURING  
 Model #: GRA1 6723A | Drawing #:  
 Date: 10/27/21 | Scale: N.T.S. | 3751 24

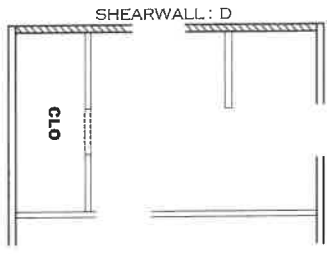
Product Designer: E HARDWICK  
 16 X 72/76 Grand Living

ELEVATION

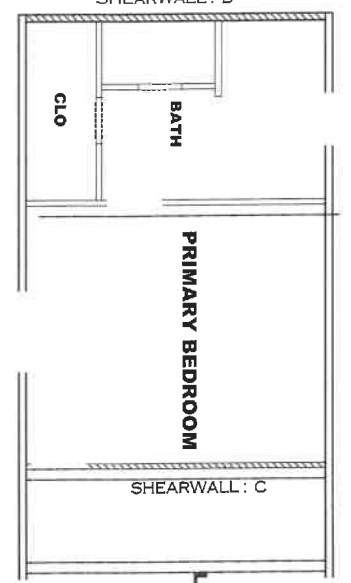




BATH OPT. 1

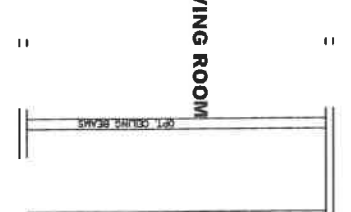


BATH OPT. 2



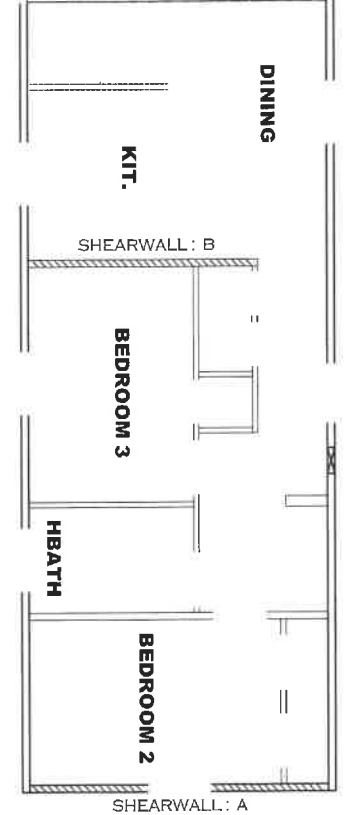
PRIMARY BEDROOM

LIVING ROOM



DINING

KIT.



BEDROOM 3

HBATH

BEDROOM 2

**Model # 37S164-1676**  
 Box Width = 180"  
 Box Length = 76 ft  
 No Skylights  
 No Porches  
 Joist Size = #2 sp 2x6 Lags 5kx3

Minimum Joist Spacing 16"

No Offset Box  
 No Cemetery  
 No Original Door  
 No Sunken Floor  
 No Porch Floor

**Version R14.00**

**Wind Zone 1 Standard Roof**  
 7/16" Rated Sheathing and Ceiling Board with 15 ga sheat @ 6/12 (288,315) Chords, 2x4 SRF #3 Top Plate spaced w/2x4 MCP & 2x3 SRF Rail spaced w/ 2x4 MCP

96 inch sidewall

Diaphragm Construction:

Shearwall	Dist./Htch	Length	PLF	# of Joists	Lags	Notes
A	0'	135.5"	350	2	3/3	Split Shearwall *
B	25.04'	128"	430	3	4/1	
C	54.54'	128"	430	3	4/1	
D	76'	124"	182	2	2/2	

Block Dist. X=0'

Diaphragm Construction:

Shearwall	Dist./Htch	Length	PLF	# of Joists	Lags	Notes
A	0'	135.5"	350	2	3/3	Split Shearwall *
B	25.04'	128"	430	3	4/1	
C	54.54'	128"	430	3	4/1	
D	76'	124"	182	2	2/2	

Block Dist. X=1'

Diaphragm Construction:

Shearwall	Dist./Htch	Length	PLF	# of Joists	Lags	Notes
A	0'	135.5"	350	2	3/3	Split Shearwall *
B	25.04'	128"	430	3	4/1	
C	54.54'	128"	430	3	4/1	
D	76'	124"	182	2	2/2	

Block Dist. X=0'

**Model # 37S164-1676-OPT REAR END**  
 Box Width = 180"  
 Box Length = 76 ft  
 No Skylights  
 No Porches  
 Joist Size = #2 sp 2x6 Lags 5kx3

Minimum Joist Spacing 16"

No Offset Box  
 No Cemetery  
 No Original Door  
 No Sunken Floor  
 No Porch Floor

**Version R14.00**

**Wind Zone 1 Standard Roof**  
 7/16" Rated Sheathing and Ceiling Board with 15 ga sheat @ 6/12 (288,315) Chords, 2x4 SRF #3 Top Plate spaced w/2x4 MCP & 2x3 SRF Rail spaced w/ 2x4 MCP

96 inch sidewall

Diaphragm Construction:

Shearwall	Dist./Htch	Length	PLF	# of Joists	Lags	Notes
A	0'	135.5"	350	2	3/3	Split Shearwall *
B	25.04'	128"	430	3	4/1	
C	54.54'	128"	430	3	4/1	
D	76'	141.5"	182	2	2/2	

Block Dist. X=0'

Diaphragm Construction:

Shearwall	Dist./Htch	Length	PLF	# of Joists	Lags	Notes
A	0'	135.5"	350	2	3/3	Split Shearwall *
B	25.04'	128"	430	3	4/1	
C	54.54'	128"	430	3	4/1	
D	76'	141.5"	182	2	2/2	

Block Dist. X=1'

Diaphragm Construction:

Shearwall	Dist./Htch	Length	PLF	# of Joists	Lags	Notes
A	0'	135.5"	350	2	3/3	Split Shearwall *
B	25.04'	128"	430	3	4/1	
C	54.54'	128"	430	3	4/1	
D	76'	141.5"	182	2	2/2	

Block Dist. X=0'

**APPROVED**

AUG 28 2025



**APPROVED**

37S164-1676-SW-0-N

1080/1140 SQ.FT. (STD PLAN "CONDITIONED")  
 N/A SQ.FT. (W/OPT. PORCH/RECESS "CONDITIONED")

Product Designer: E HARDWICK

**Crayton Built**

Model #: GRA16723A Drawing #: 37S164-1676  
 Date: 8/25/25 Scale: N.T.S.

**SHEARWALL PAGE NEW**