

APPROVED



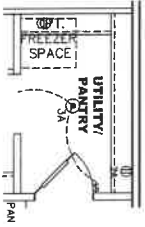
DEC 18 2025

REVISED

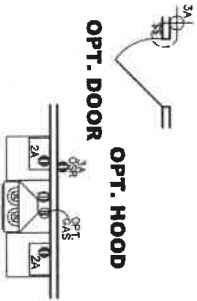
Federal Manufactured Home Construction  
And Safety Standards

APPROVED

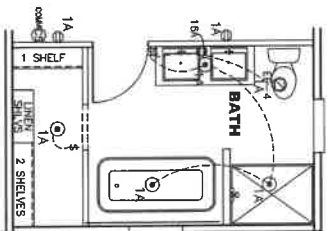
UTILITY PANTRY  
OPT. DOOR



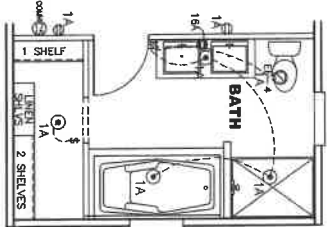
OPT. DOOR  
OPT. HOOD



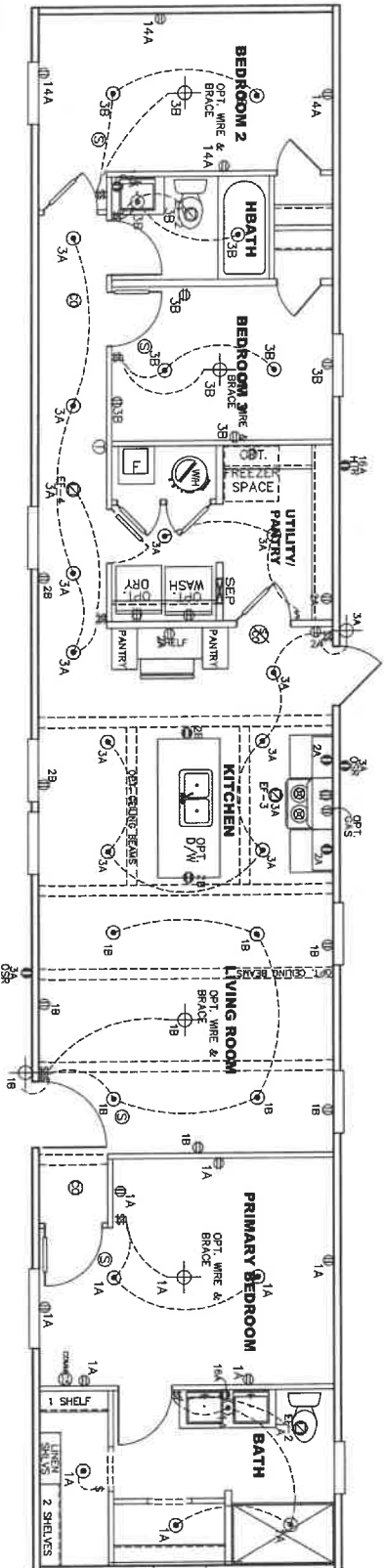
CIRCUIT	CIRCUIT #	WIRE	BREAKER	CIRCUIT	CIRCUIT #	WIRE	BREAKER	CIRCUIT	CIRCUIT #	WIRE	BREAKER
LIGHT/RECP	1A,1B,3A,3B,14A	14-2	15-SP	WATER HEATER	4A,6B	SEE NOTE #8	SEE NOTE #8	BATHROOM	16A	12-2	20-SP
KITCHEN/RANGE	2A,2B	12-2	20-SP	RANGE	5B,7A	SEE NOTE #8	SEE NOTE #8	BATHROOM	9A	SEE NOTE #8	SEE NOTE #8
WASHER	12A	12-2	20-SP	OPT GAS RANGE	15B	SEE NOTE #8	SEE NOTE #8	FURNACE	11A,B	SEE NOTE #8	SEE NOTE #8
DRYER	5A,7B	SEE NOTE #8	SEE NOTE #8	FURNACE	6A,8A,8,10A,B	SEE NOTE #8	SEE NOTE #8	FREZZER	N/A	SEE NOTE #8	SEE NOTE #8
				OPT D. WASH	9A	SEE NOTE #8	SEE NOTE #8				
				WATER ALARM/20	4B	SEE NOTE #8	SEE NOTE #8				



BATH OPT. 1



BATH OPT. 2



CENTER HITCH  
END WINDOW OPT.



OPT. WINDOWS  
FOR DORMER APPLICATION

- NOTES:
1. ALL CIRCUITS SHOWN ARE FOR REFERENCE AND MAY BE CHANGE BASED ON OPTIONAL COMPONENTS INSTALLED IN THE HOME.
  2. REFER TO EL SECTION OF THE DATA FOR SYMBOL CHART.
  3. EITHER LIGHT OR RECEPTACLE MUST CONNECT TO SWITCH.
  4. EF-1= 50 CFM EXHAUST FAN REQUIRED FOR THERMAL ZONE III. THERMAL ZONES I & II MAY USE FAN OR WINDOW W/1.5 SQ. FT. OPENABLE GLASS.
  5. EF-2= 50 CFM EXHAUST FAN REQUIRED THERMAL ZONE I, II, AN
  6. EF-3= 100 CFM RANGE EXHAUST FAN, SWITCH AT HOOD.
  7. EF-4= WHOLE HOUSE VENTILATION PER REQUIREMENTS IN S-HV-10A OR M-HV-11 & 11A OF DHPA.
  8. REFER TO EL SECTION OF THE DATA OR THE MFG. INSTALLATION INSTRUCTIONS FOR PROPER WIRE SIZE AND BREAKER SIZE FOR SPECIFIC APPLIANCE AND MODEL BEING INSTALLED.
  9. ALL SMOKE ALARMS TO BE LOCATED ON THE CEILING.
  10. DIMENSIONS SHOWN ON PRINT ARE APPROXIMATE AND TO BE USE ONLY AS A GUIDELINE.

1140 SQ.FT. (STD PLAN "CONDITIONED")  
N/A SQ.FT. (W/OPT. PORCH/RECESS "CONDITIONED")

Model #: FRELGT63A Drawing #: 375168  
Date: 12/09/25 Scale: NTS

Product Designer: Jessica Lambert

MANUFACTURING  
16 X 76 LIBERTY

ELECTRICAL PLAN-06

LEGEND	
A	SHORT TURN 1-Y
B	LONG TURN 1-Y
C	1/4 BEND
D	LONG SWEEP 1/4 BEND
E	45 ELL
F	DR. SANITARY TEE
G	4x3 CLOSET ELL
H	DOUBLE ELL
I	22 1/2" ELL
J	45-Y
K	LONG TURN STREET ELBOW
L	45 FTG. ELL

DWV LINE SIZE CHART	
—	= 3"
—	= 2"
—	= 1 1/2"

**APPROVED**

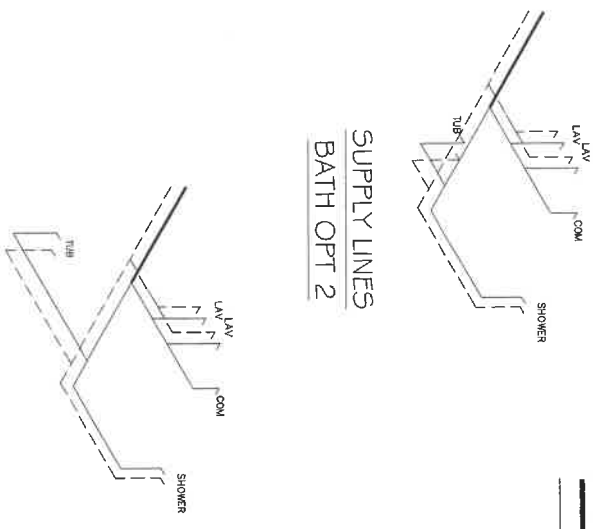
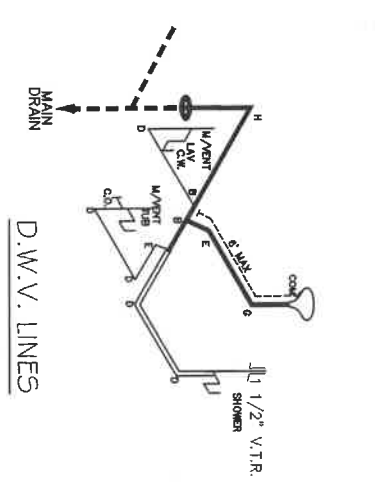
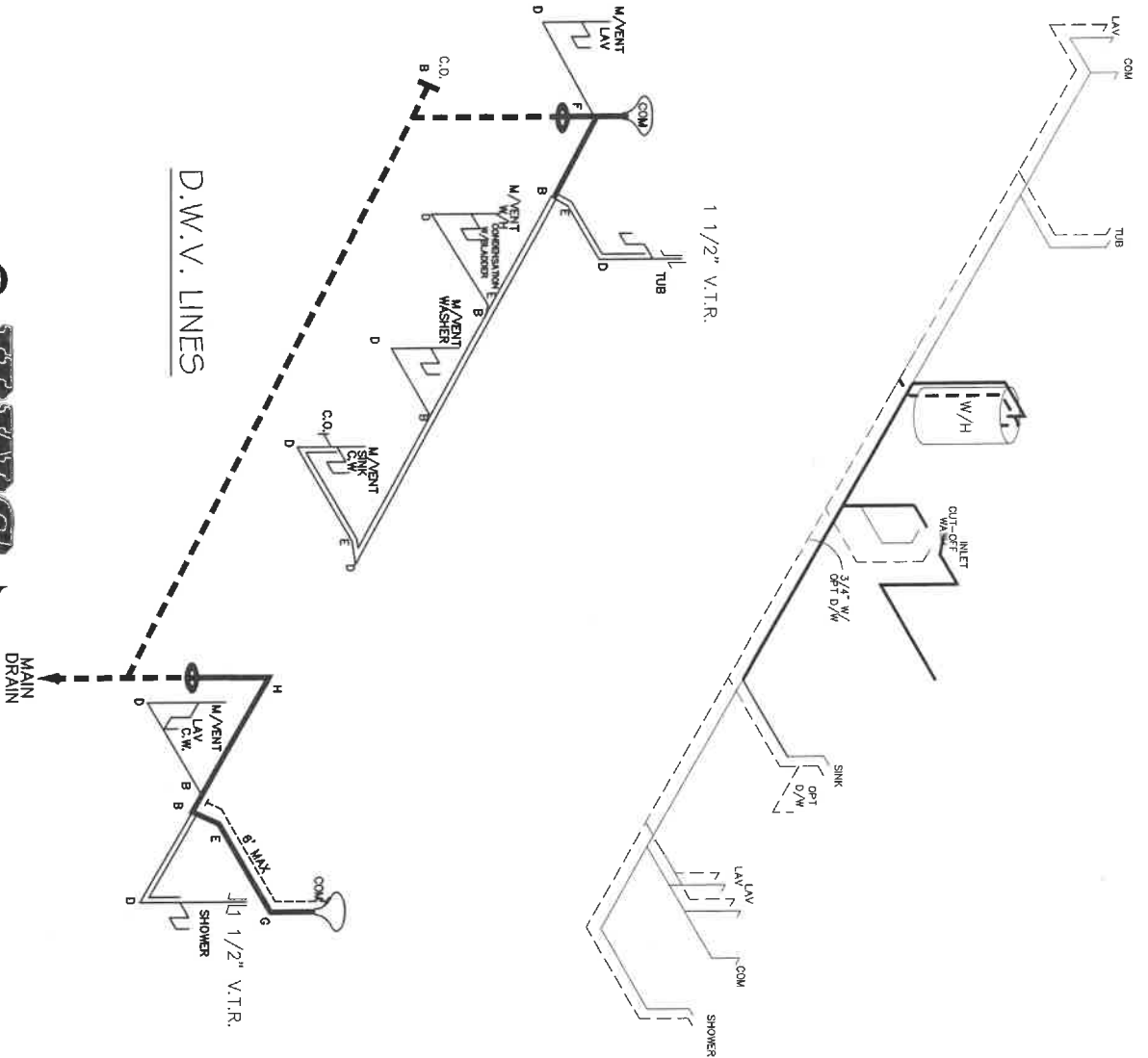
**HWG**

**REvised**

**MAY 22 2025**

**APPROVED**

Federal Manufactured  
Home Construction  
And Safety Standards  
6

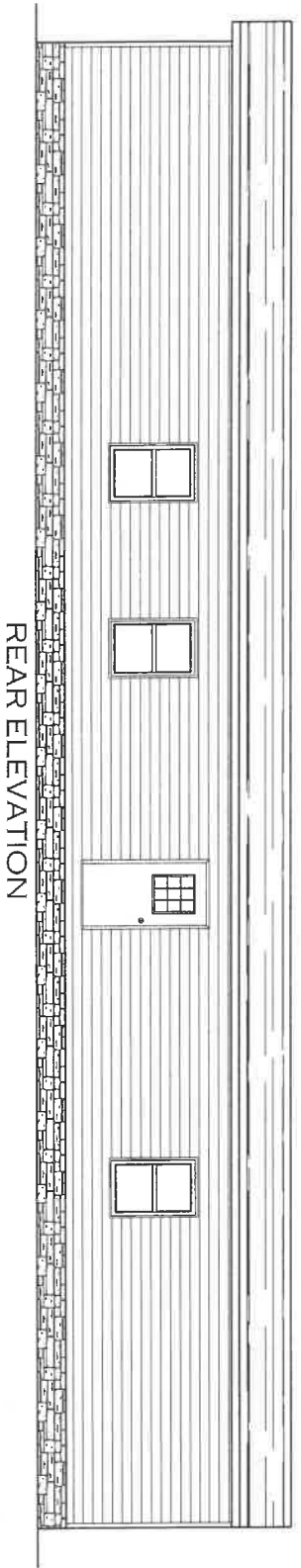


NOTE:  
DASHED LINES INDICATE HOT WATER  
SOLID LINES INDICATE COLD WATER

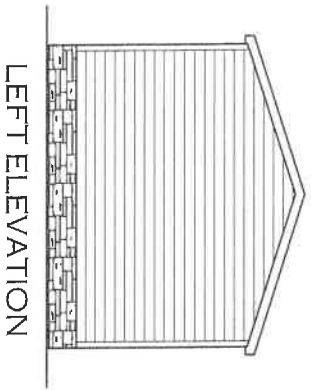
— = 3/4"  
— = 1/2"

Product Designer: J PIPES		Model #: FRE16763A		Drawing #:	
D.W.V. and Supply Lines		Date: 02/18/24 Scale: NTS		375168	

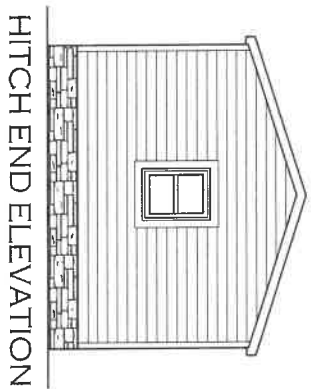
1140 SQ.FT. (STD PLAN "CONDITIONED")  
N/A SQ.FT. (W/OPT. PORCH/RECESS "CONDITIONED")



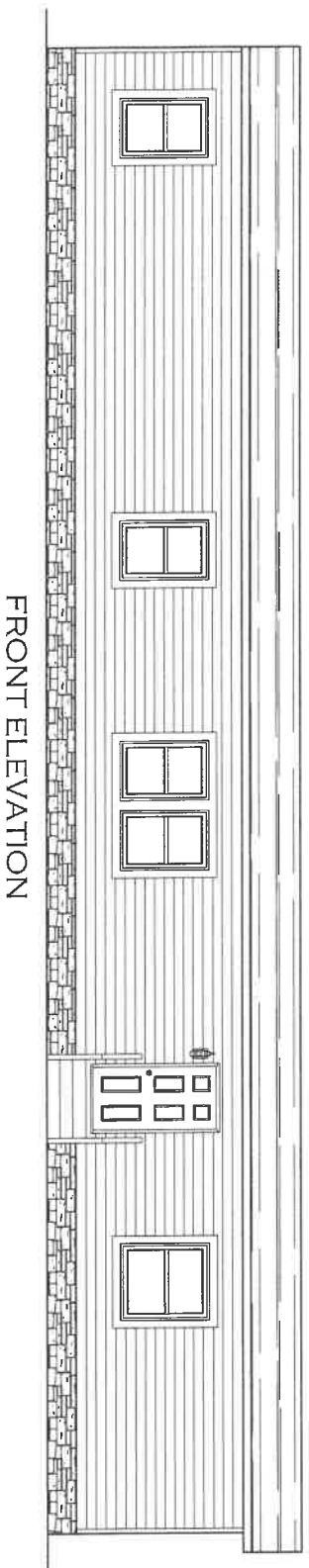
REAR ELEVATION



LEFT ELEVATION



HITCH END ELEVATION

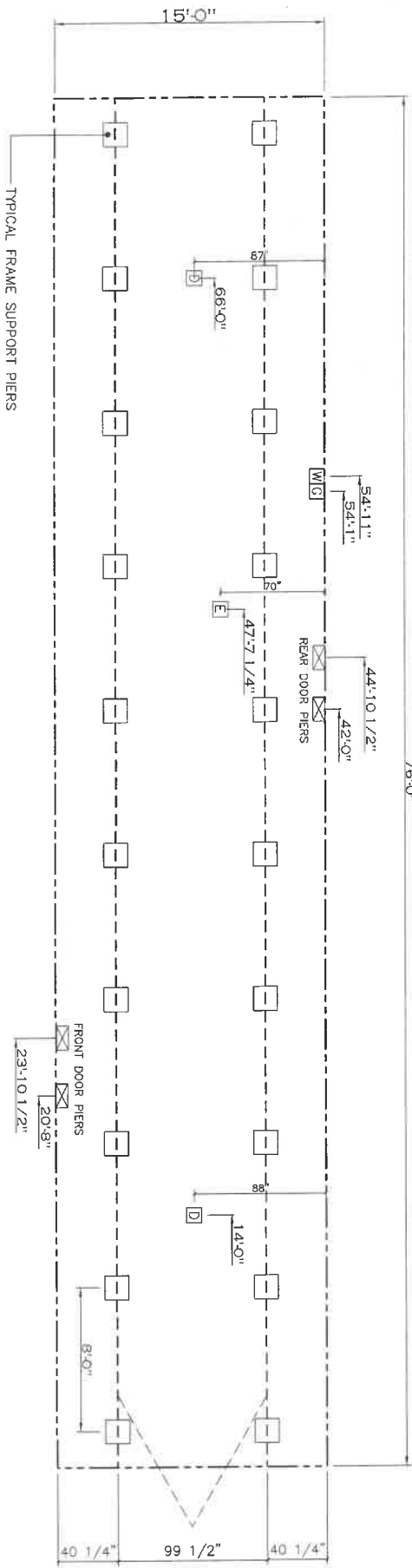


FRONT ELEVATION

1140 SQ.FT. (STD PLAN "CONDITIONED")	
N/A SQ.FT. (W/OPT. PORCH/RECESS "CONDITIONED")	
<b>CMH</b>	Model #: FRE16763A
MANUFACTURING	Date: 02/19/24 Scale: NTS
Product Designer: J PIPES	Drawing #: 375168
16 X 76 FREEDOM	
ELEVATION	



78'-0"



20 lb ROOF LOAD SIDEWALL OPENING PER LOAD 16' BOX WIDTH	SIDEWALL OPENING (FT) REQUIRED PER LOAD (135)				
3	4	5	6	8	10
1244	1413	1581	1750	2088	2425

\*FOR 30 lb & 40 lb ROOF LOAD REFER TO TABLES 7 & 7g IN THE INSTALLATION MANUAL.

SERVICE DROP LEGEND	
[E]	= ELECTRICAL DROP
[W]	= WATER INLET
[D]	= DWV PLUMBING DROP
[G]	= GAS INLET

PIER LEGEND	
[□]	= PIER MAIN BEAM
[▤]	= PIER PERIMETER
[■]	= PIER PORCH/RECESS DIMRY

- NOTES:
- REFER TO TABLES 6 AND 6g IN THE INSTALLATION MANUAL FOR LOAD ON FRAME PIER FOOTINGS FOR HOMES THAT DO NOT REQUIRE PERIMETER BLOCKING. REFER TO TABLES 7 AND 7g IN THE INSTALLATION MANUAL FOR LOAD ON FRAME PIER FOOTINGS FOR HOMES THAT REQUIRE PERIMETER BLOCKING. REFER TO TABLES 10 AND 10g TO DETERMINE FOOTING SIZE FOR ALL PIERS.
  - REFER TO TABLE 9 FOR PIER CONFIGURATION AND MAXIMUM ALLOWABLE HEIGHTS. CROSS REFERENCE THE PIER HEIGHT WITH THE MAXIMUM ALLOWABLE FLOOR HEIGHT LISTED IN THE FRAME ALLOWABLE CHARTS (TABLE 18, 19, AND 20).
  - THE MAXIMUM SPACING FOR 8" I-BEAMS IS 8 FEET, 10" & 12" I-BEAMS IS 10 FEET.
  - SERVICE DROP LOCATIONS IDENTIFIED ARE APPROXIMATE.
  - FLOOR WIDTH SHOWN IS FOR STANDARD PRODUCT ONLY. CONTACT THE MFG FACILITY FOR SPECIFICATIONS OF OPTIONS ORDERED.

1140 SQ.FT. (STD PLAN "CONDITIONED")  
N/A SQ.FT. (W/OPT. PORCH/RECESS "CONDITIONED")

Product Designer: J PIPES

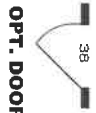
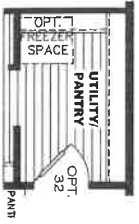
**CMIH**  
MANUFACTURING

Model #: FRE16763A Drawing #: 375168  
Date: 01/12/25 Scale: N19

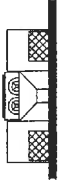
**FRAME PIERS**

16 X 76 LIBERTY

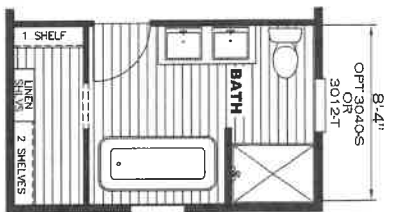
**UTIL/PANTRY  
OPT. DOOR**



**OPT. DOOR  
OPT. HOOD**

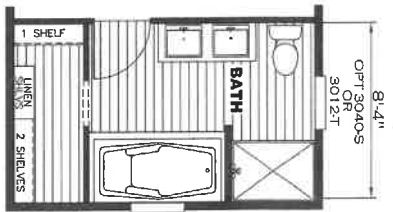


**BATH OPT. 1**



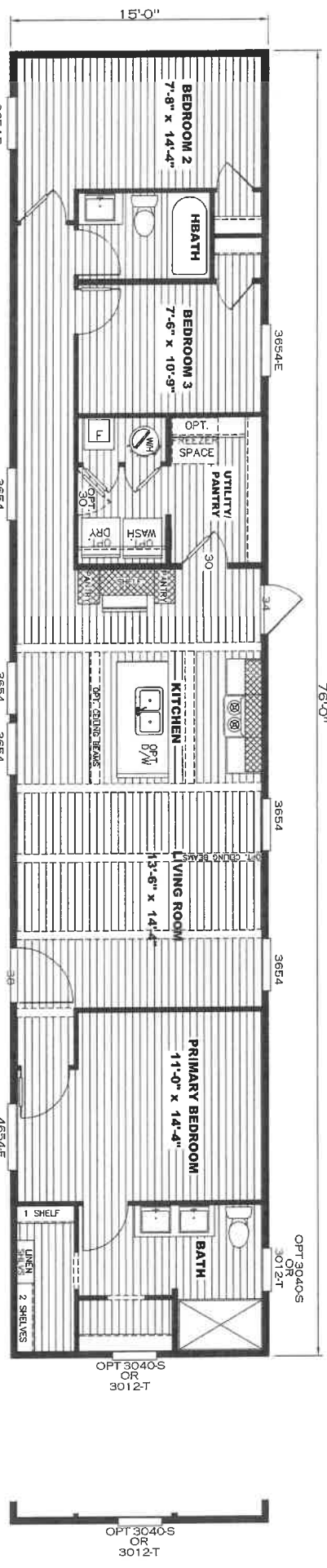
OPT 3040-S  
OR  
3012-T

**BATH OPT. 2**



OPT 3040-S  
OR  
3012-T

**CENTER HITCH  
END WINDOW OPT.**

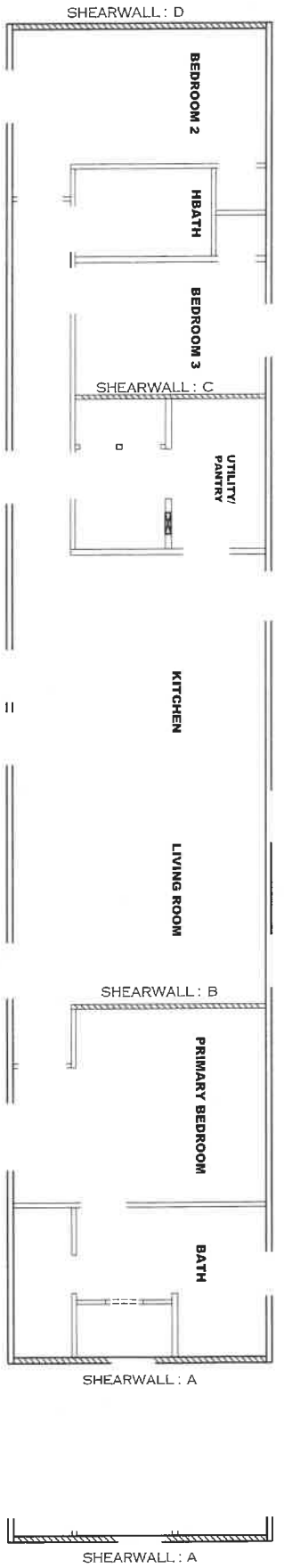


**OPT. WINDOWS  
FOR DORMER APPLICATION**



1G x 76 LIBERTY  
Model #: FRE116763A  
Drawing #: 375168





**Model # 37S168**  
 Box Width = 180"  
 Box Length = 76 ft  
 No Skylights  
 No Porches  
 Joist Size = #2 sp 2x6

Minimum Joist Spacing 16"  
 No Offset Box  
 No Clerestory  
 No Original Dormer  
 No Sunken Floor  
 No Parapet Roof

**Version R14.00**

**Wind Zone 1 Standard Roof**  
 7/16" Rated Sheathing and Ceiling Board with 15 ga staple @ 6/12 (286,315) Chords: 2x4 SPF #3 Top Plate spliced w/2x4 MCP & 2x3 SPF Rail spliced w/ 2x4 MCP

Diaphragm Construction:

Shearwall	Dist./ Hitch	Length	PLF	# of Joists	Lags	Notes
A	0'	141.5"	162	2	2/2	Split Shearwall *
D	76'	Full	162	2	2/2	

Block Dist. X=0  
SW1/SW2  
74.75/66.75

**Wind Zone 2 Standard Roof**  
 7/16" Rated Sheathing and Ceiling Board with 15 ga staple @ 6/12 (286,315) Chords: 2x4 SPF #3 Top Plate spliced w/2x4 MCP & 2x3 SPF Rail spliced w/ 2x4 MCP

Diaphragm Construction:

Shearwall	Dist./ Hitch	Length	PLF	# of Joists	Lags	Notes
A	0'	141.5"	162	2	2/2	Split Shearwall *
B	20.21'	128"	430	3	4/1	
C	54.79'	128"	430	3	4/1	
D	76'	124"	162	2	2/1	

Block Dist. X=0  
SW1/SW2  
74.75/66.75

**Wind Zone 3 Standard Roof**  
 7/16" Rated Sheathing and Ceiling Board with 15 ga staple @ 6/12 (286,315) Chords: 2x4 SPF #3 Top Plate spliced w/2x4 MCP & 2x3 SPF Rail spliced w/ 2x4 MCP

Diaphragm Construction:

Shearwall	Dist./ Hitch	Length	PLF	# of Joists	Lags	Notes
A	0'	141.5"	350	2	3/3	Split Shearwall *
B	20.21'	128"	520	4	5/2	
C	54.79'	128"	520	4	5/2	
D	76'	148"	162	2	2/1	

Block Dist. X=1.1'  
96 inch sidewall

**APPROVED**

**HTWG**

SEP 24 2025

Federal Manufactured Home Construction And Safety Standards

**APPROVED**

**37S168-SW-0-N**

1640 SQ.FT. (STD PLAN "CONDITIONED")  
 N/A SQ.FT. (W/OPT. PORCH/RECESS "CONDITIONED")

Model #: 37S168  
 Drawing #: 37S168

Product Designer: Jessica Lambert  
 Scale: N.T.S.  
**SHEARWALL PAGE** O-N

\* Denotes that indicated shearwall is over full depth/width front steel chassis header.