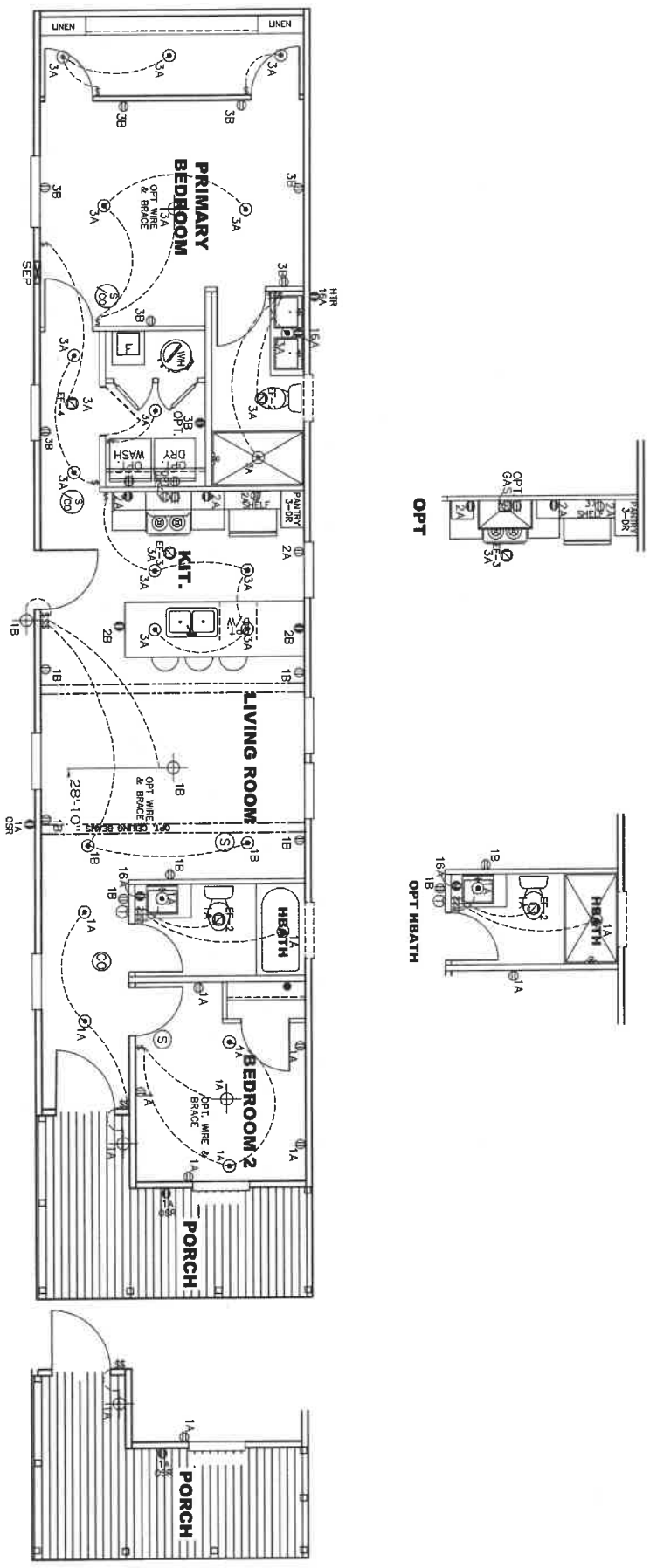


CIRCUIT	CIRCUIT #	WIRE	BREAKER	CIRCUIT	CIRCUIT #	WIRE	BREAKER	CIRCUIT	CIRCUIT #	WIRE	BREAKER
LIGHT/RECP	1A, 1B, 3A, 3B	14-2	15-SP	DRYTR	5A, 7B	SEE NOTE #9		BATHROOM	16A	12-2	20-SP
WATER HEATER	12B, 13B, 14A, 14B	14-2	15-SP	RANGE	4A, 5B	SEE NOTE #9		OPT 6/DISP	9B	SEE NOTE #9	
KITCHEN	2A, 2B	12-2	20-SP	RANGE	5B, 7A	SEE NOTE #9		OPT JAC	11A, B	SEE NOTE #9	
WASHER	12A	12-2	20-SP	FURNACE	6A, 8A, B, 10A, B	SEE NOTE #9		OPT D/WASH	13A	SEE NOTE #9	
FRIG	15B	SEE NOTE #9		SMOKE/CO DET	4B	SEE NOTE #9		OPT FICE	16B	SEE NOTE #9	
PT. GAS RANG	15A	SEE NOTE #9		REFR	12B	SEE NOTE #9					




- NOTES:
1. ALL CIRCUITS SHOWN ARE FOR REFERENCE AND MAY BE CHANGED BASED ON OPTIONAL COMPONENTS INSTALLED IN THE HOME.
 2. REFER TO DAPA MANUAL FOR SYMBOL CHART.
 3. EITHER LIGHT OR RECEPTACLE MUST CONNECT TO SWITCH.
 4. EF-1= 50 CFM EXHAUST FAN REQUIRED FOR THERMAL ZONE III THERMAL ZONES I & II MAY USE FAN OR WINDOW W/1.5 SQ. FT. OPENABLE GLASS.
 5. EF-2= 50 CFM EXHAUST FAN REQUIRED THERMAL ZONE I, II, AND III.
 6. EF-3= 100 CFM RANGE EXHAUST FAN, SWITCH AT HOOD.
 7. EF-4= WHOLE HOUSE VENTILATION REQUIREMENTS PER DAPA MANUAL.
 8. REFER TO DAPA MANUAL OR THE MFG. INSTALLATION INSTRUCTIONS FOR PROPER WIRE SIZE AND BREAKER SIZE FOR SPECIFIC APPLIANCE AND MODEL BEING INSTALLED.
 9. ALL SMOKE ALARMS TO BE LOCATED ON THE CEILING.
 10. CARBON MONOXIDE ALARMS ARE ONLY REQUIRED WHEN HOME HAS EITHER FUEL BURNING APPLIANCES, IS GARAGE READY OR IS BASEMENT READY. REFERENCE DAPA MANUAL FOR ADDITIONAL INFORMATION.
 11. DIMENSIONS SHOWN ON PRINT ARE APPROXIMATE AND TO BE USED ONLY AS A GUIDELINE.

APPROVED

 OCT 13 2025
 REVISED
 Federal Manufactured
 Home Construction
 And Safety Standards
 6
APPROVED

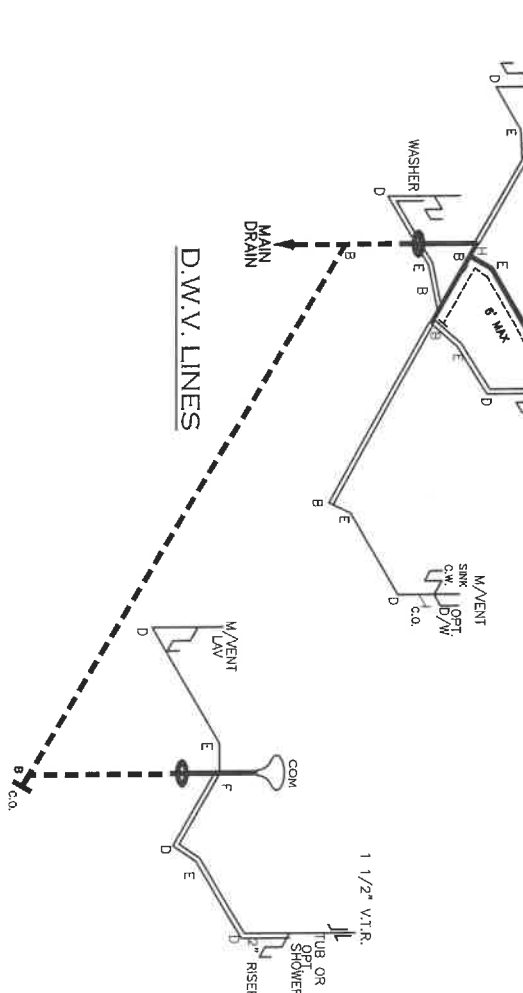
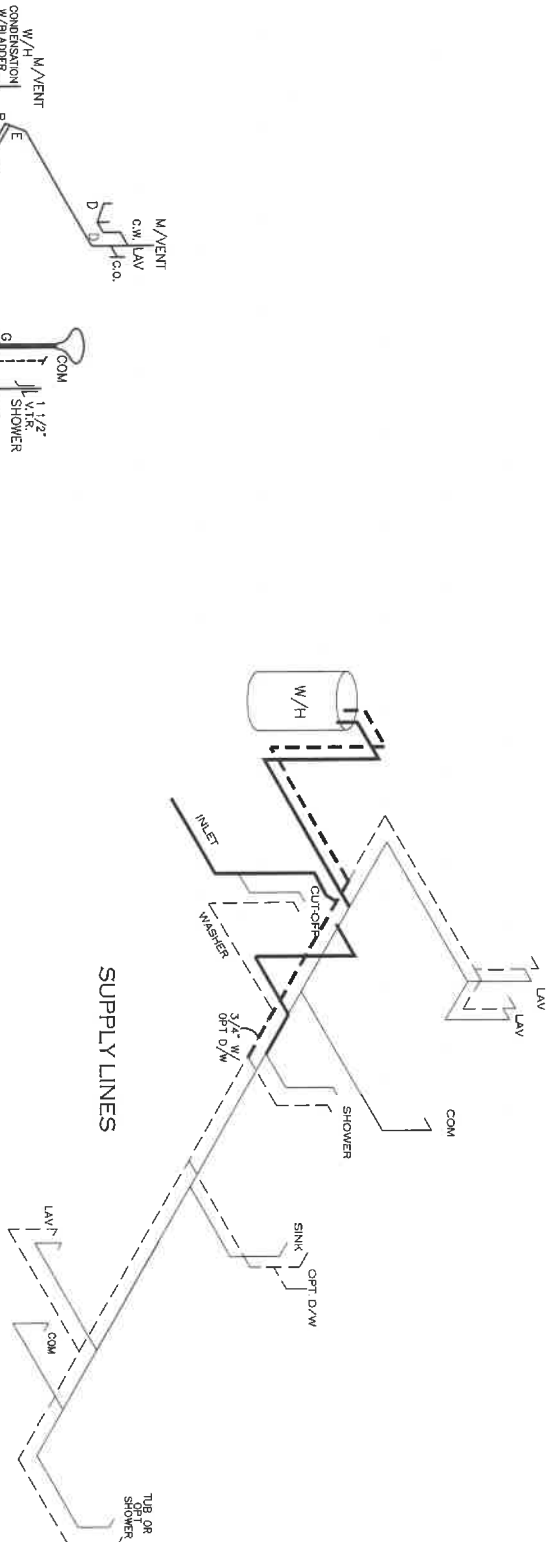
1020 SQ.FT. (STD PLAN "CONDITIONED")
 N/A SQ.FT. (W/OPT. PORCH/RECESS "CONDITIONED")

 Product Designer: Jessica Lambert	Model #: FRE16702P	Drawing #:
	Date: 09/16/25	Scale: N/A

ELECTRICAL PLAN-06

NOTE:
 DASHED LINES INDICATE HOT WATER
 SOLID LINES INDICATE COLD WATER

— = 3/4"
 — = 1/2"



APPROVED
HWG
 OCT 13 2025
 REVISED
 FEDERAL MANUFACTURED
 HOME CONSTRUCTION
 AND SAFETY STANDARDS
APPROVED

LEGEND

A	SHORT TURN T-Y
B	LONG TURN T-Y
C	1/4 BEND
D	LONG SWEEP 1/4 BEND
E	45 ELL
F	DBL. SANITARY TEE
G	4X3 CLOSET ELL
H	DOUBLE ELL
I	22 1/2" ELL
J	45° Y
K	LONG TURN STREET ELBOW

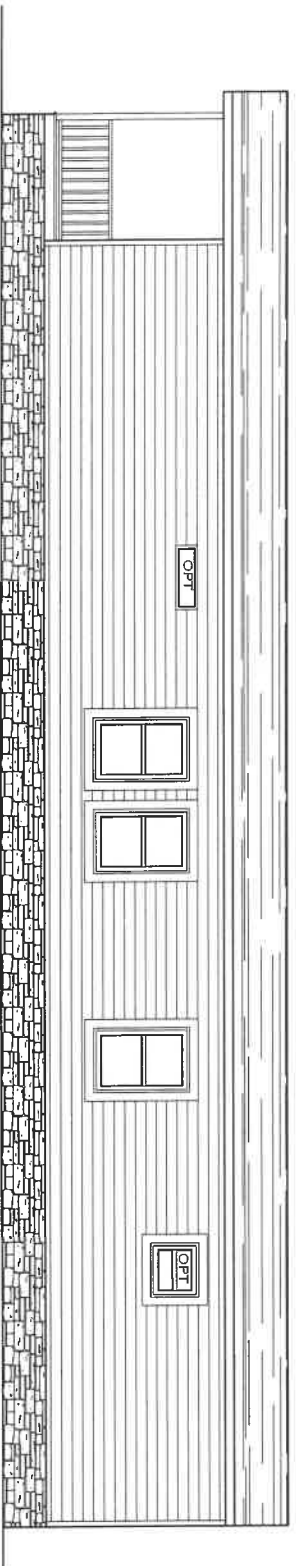
DWV LINE SIZE CHART

—	= 3"
—	= 2"
—	= 1 1/2"

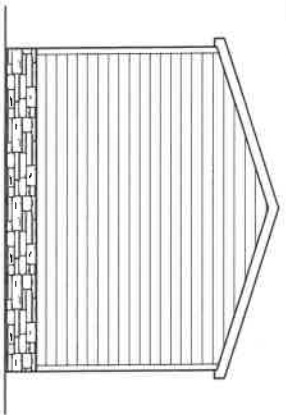
1020 SQ.FT. (STD PLAN "CONDITIONED")
 N/A SQ.FT. (W/OPT. PORCH/RECESS "CONDITIONED")

Clayton Built	Model #: FRE16702P	Drawing #:
Product Designer: Jessica Lambert	Date: 09/16/25 Scale: N/A	375171

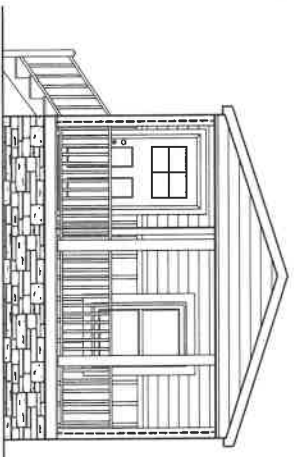
D.W.V. and Supply Lines



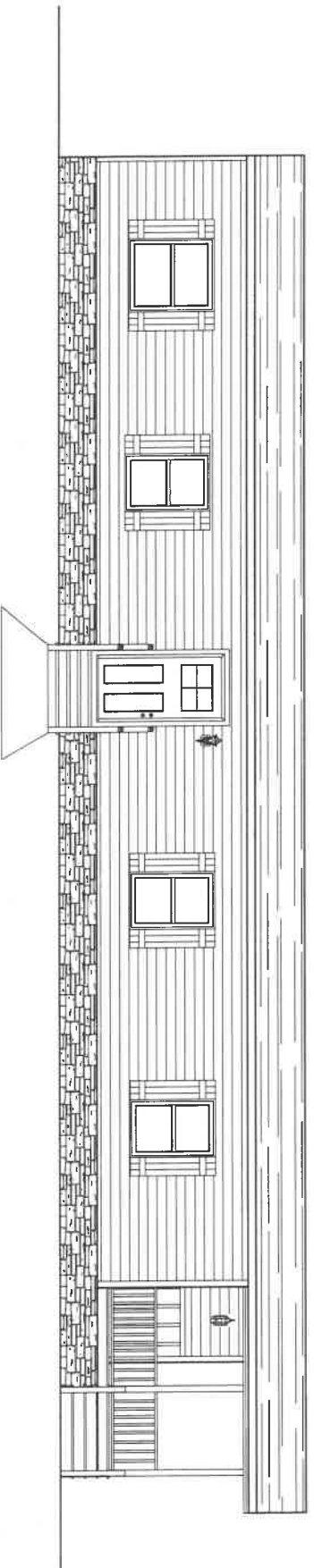
REAR ELEVATION



LEFT ELEVATION



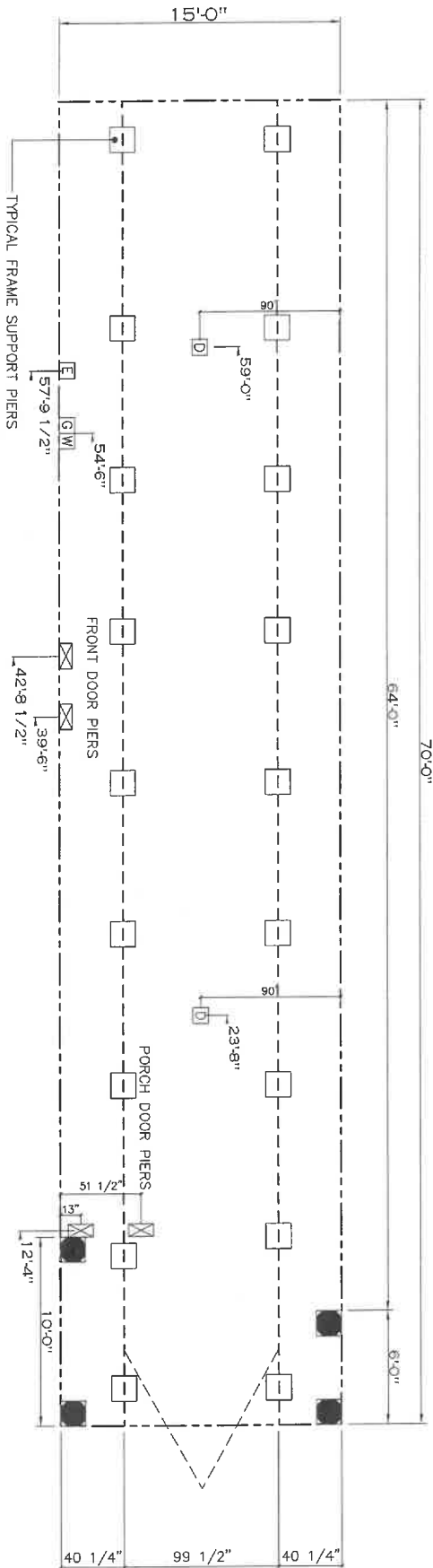
RIGHT ELEVATION



16 x 70 Warrior II
Model #: FRE16702P
Drawing #:
375171

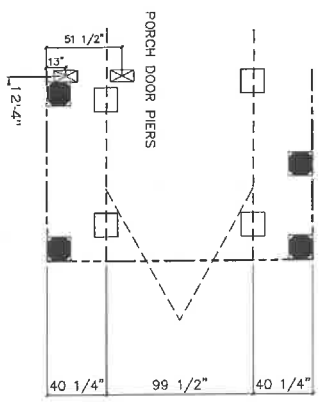
20 lb ROOF LOAD		SIDEWALL OPENING PIER LOAD							
16" BOX WIDTH		REQUIRED PIER LOAD (LBS)							
3	4	5	6	8	10				
1244	1413	1581	1750	2088	2425				

*FOR 30 lb & 40 lb ROOF LOAD REFER TO TABLES 7 & 7a IN THE INSTALLATION MANUAL.



SERVICE DROP LEGEND	
	E = ELECTRICAL DROP
	W = WATER N.E.T.
	D = DWV PLUMBING DROP
	G = GAS INLET

PIER LEGEND	
	□ = SUPPORT UNDER MATING OPENING
	■ = SUPPORT AT MATING COLUMN
	▣ = SUPPORT UNDER MATING WALL
	◼ = PIER NOOK/RECESSED ENTRY
	▢ = PIER MAIN BEAM
	∞ = PIER RECESSER



- GENERAL NOTES:**
- PIER LOADS SHOWN ARE TO BE USED TO SIZE THE FOOTINGS BELOW THE MARRIAGEWALL FOR COLUMN SUPPORT PIERS. REFER TO TABLES 6b AND 6c IN THE INSTALLATION MANUAL FOR LOAD ON FRAME PIER FOOTINGS FOR HOMES THAT DO NOT REQUIRE PERIMETER BLOCKING. REFER TO TABLES 7b AND 7c IN THE INSTALLATION MANUAL FOR LOAD ON FRAME PIER FOOTINGS THAT REQUIRE PERIMETER BLOCKING. REFER TO TABLES 10 AND 10a TO DETERMINE FOOTING SIZE FOR ALL PIERS.
 - REFER TO TABLE 9 FOR PIER CONFIGURATION AND MAXIMUM ALLOWABLE HEIGHTS. CROSS REFERENCE THE PIER HEIGHT WITH THE MAXIMUM ALLOWABLE FLOOR HEIGHT LISTED IN THE FRAME TIEDOWN CHARTS (TABLE 18, 19, AND 20).
 - FLOOR WIDTH SHOWN IS FOR STANDARD PRODUCT ONLY. CONTACT THE MFG PLANT FOR SPECIFICATIONS OF OPTIONS ORDERED.
 - SERVICE DROP LOCATIONS IDENTIFIED ARE APPROXIMATE.
 - THE MAXIMUM SPACING FOR 8" I-BEAMS IS 8 FEET, 10" & 12" I-BEAMS ARE 10 FEET.

1020 SQ.FT. (STD PLAN "CONDITIONED")
 N/A SQ.FT. (W/OPT. PORCH/RECESS "CONDITIONED")

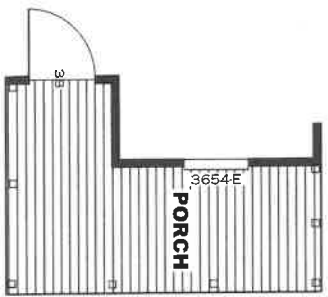
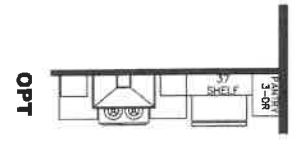
Product Designer: J PIPES

Clayton Built

Model #: FRE16702P Drawing #: 375171
 Date: 8/1/2024 Scale: N/A

FRAME PIERS

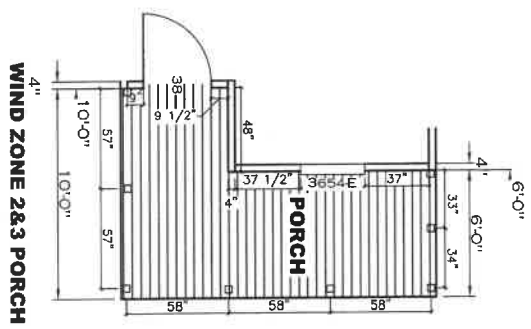
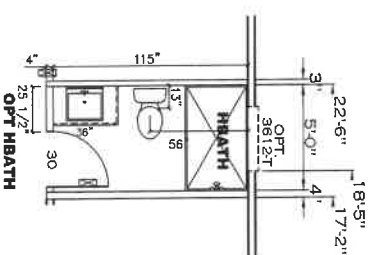
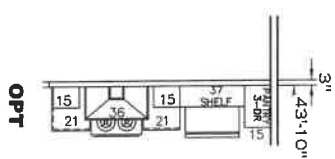
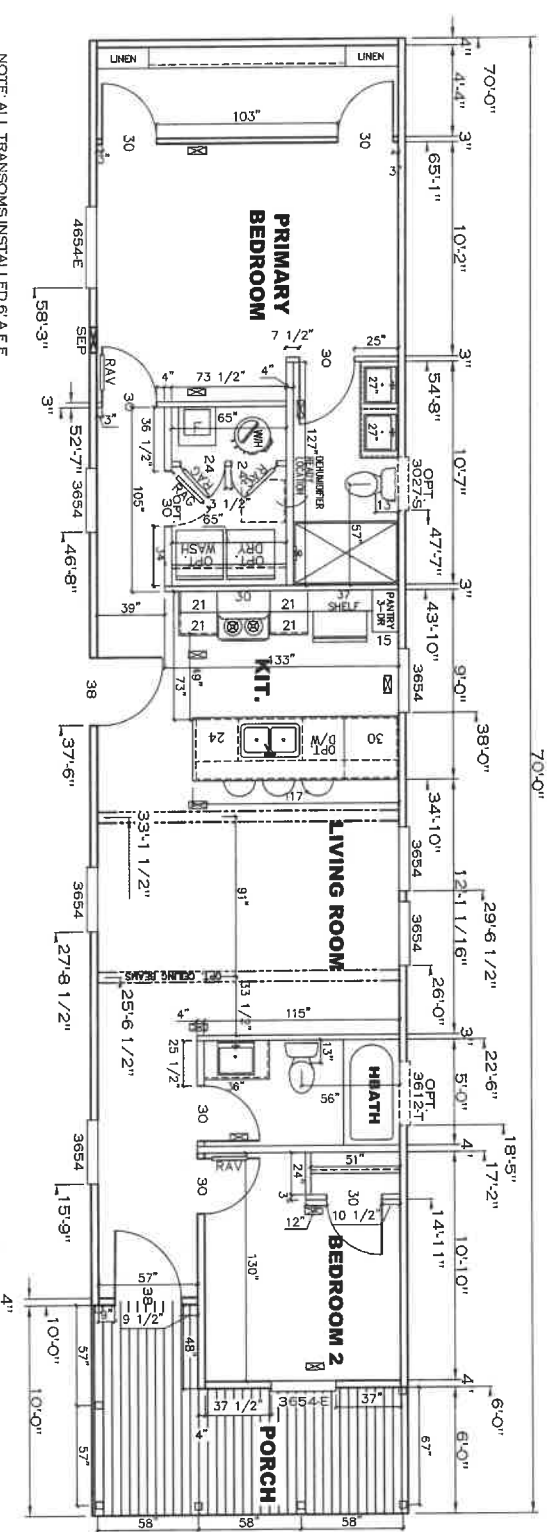
16 x 70 Warrior II



WIND ZONE 2&3 PORCH

16 x 70 Warrior II
 Model #: FRE16702P
 Drawing #:
 379171

NOTE: ALL TRANSOMS INSTALLED 6" A.F.F.
 M.D.: 1880-3/4"
 M.D.: 2466-1/2"
 GALLON VOLUME: 0.57



1020 SQ.FT. (STD PLAN "CONDITIONED")
 N/A SQ.FT. (W/OPT. PORCH/RECESS "CONDITIONED")

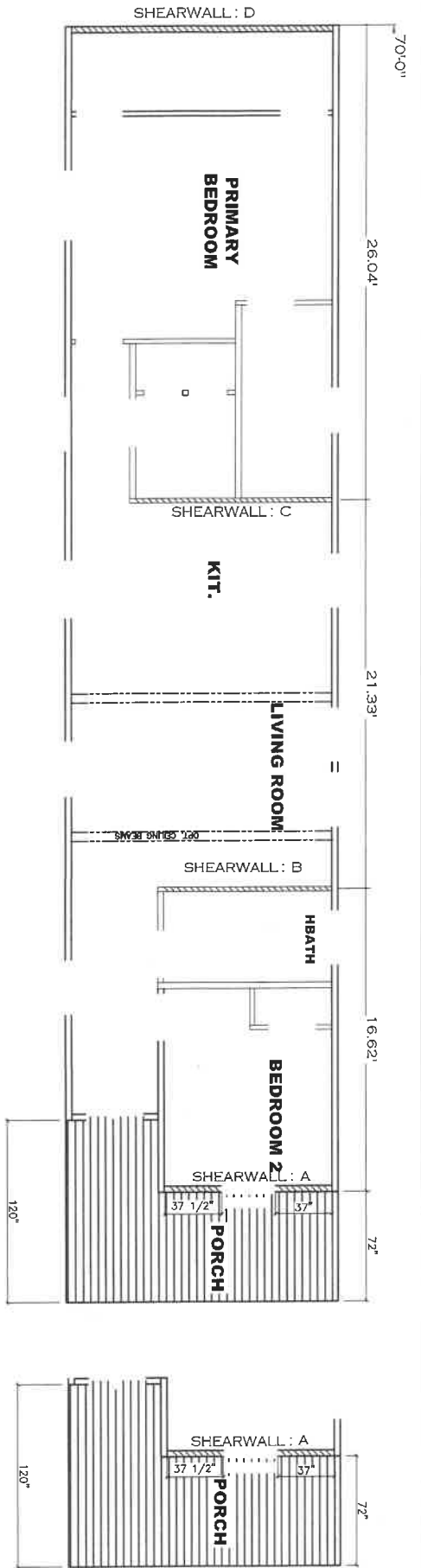
Clayton Built

Product Designer: Jessica Lambert

Model #: FRE16702P	Drawing #:
Date: 01/22/26 Scale: N/A	375171

16 x 70 Warrior II

FLOOR PLAN



WIND ZONE 2&3 PORCH

Model # 37S171
 Box Width = 180" Single wide Minimum Joist Spacing 16"
 Box Length = 70 ft. 99.5" 12" MIN. I-BEAM No Offset Box
 No Skylights No Origant Dormer
 72" Front porch No Sunken Floor
 Joist Size = #2 sp 2x6 Lags 9Mx3" No Parapet Roof

Version R14.00

Wind Zone 1 Standard Roof
 7/16" Rated Sheathing and Ceiling Board with 15 ga staple @ 6/12 (296,315) Chords: 2x4 SPF #3 Top Plate spliced w/2x4 MCP & 2x3 SPF Rall spliced w/ 2x4 MCP
 96 inch sidewall

Diaphragm Construction:

Shearwall	Dist./ Hitch	Length	PLF	# of Joists	Lags	Notes
A	0'	74.5"	162	2	1/1	Split-Island Shearwall *
B	16.62'	88"	162	2	1/1	
C	37.95'	108"	162	2	1/1	
D	63.99'	60"	162	2	1/1	

Block Dist. X=0'

Wind Zone 2 Standard Roof
 7/16" Rated Sheathing and Ceiling Board with 15 ga staple @ 6/12 (296,315) Chords: 2x4 SPF #3 Top Plate spliced w/2x4 MCP & 2x3 SPF Rall spliced w/ 2x4 MCP
 96 inch sidewall

Diaphragm Construction:

Shearwall	Dist./ Hitch	Length	PLF	# of Joists	Lags	Notes
A	0'	74.5"	250	2	1/1	Split-Island Shearwall *
B	16.62'	112"	350	4	3/1	
C	37.95'	128"	350	2	3/1	
D	63.99'	152"	162	2	2/1	

Block Dist. X=0'

Wind Zone 3 Standard Roof
 7/16" Rated Sheathing and Ceiling Board with 15 ga staple @ 6/12 (296,315) Chords: 2x4 SPF #3 Top Plate spliced w/2x4 MCP & 2x3 SPF Rall spliced w/ 2x4 MCP
 96 inch sidewall

Diaphragm Construction:

Shearwall	Dist./ Hitch	Length	PLF	# of Joists	Lags	Notes
A	0'	74.5"	350	2	1/1	Split-Island Shearwall *
B	16.62'	112"	430	6	3/1	
C	37.95'	128"	430	3	4/1	
D	63.99'	120"	250	2	2/1	

Block Dist. X=1.1'

* Denotes that indicated shearwall is over full depth/width front steel chassis header.

APPROVED



SEP 30 2025

APPROVED

Federal Manufactured Home Construction And Safety Standards 6

37S171-SW-0-N

1020 SQ.FT. (STD PLAN "CONDITIONED")
 N/A SQ.FT. (W/OPT. PORCH/RECESS "CONDITIONED")

Product Designer: Jessica Lambert	Model #: FRE16702P	Drawing #: 37S171
Clayton Built	Date: 09/15/25 Scale: N/A	