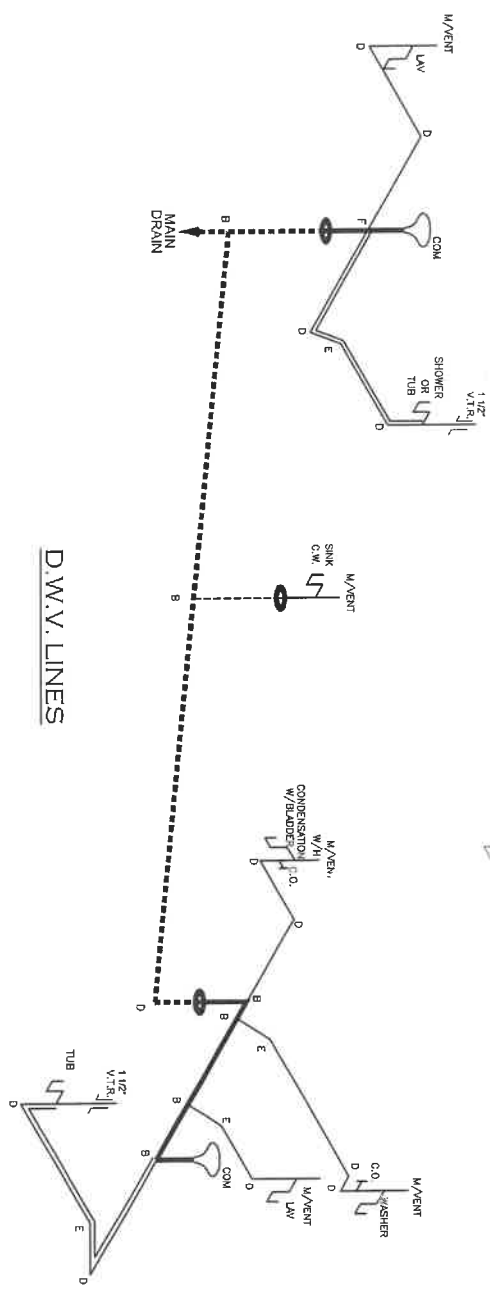
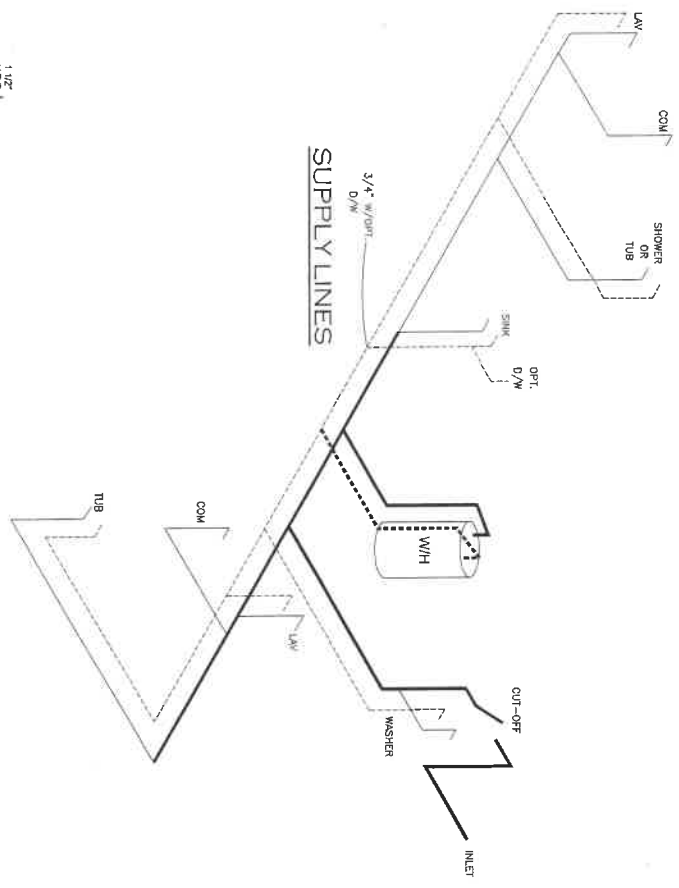


NOTE:
 DASHED LINES INDICATE HOT WATER
 SOLID LINES INDICATE COLD WATER

— = 3/4"
 — = 1/2"



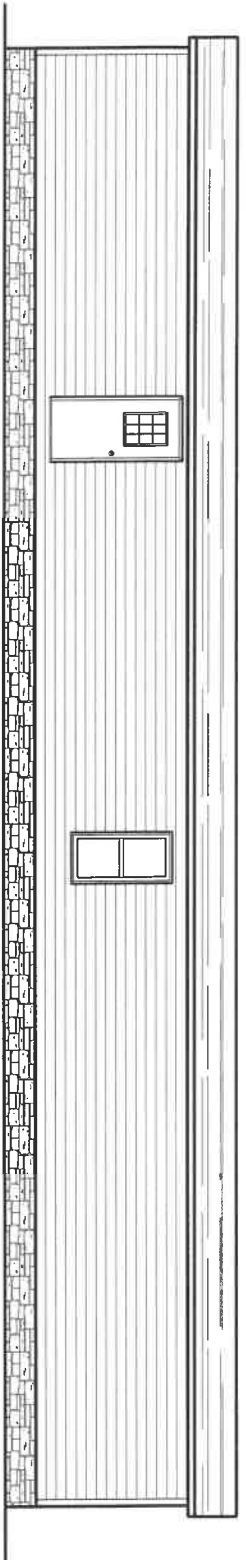
APPROVED

APPROVED
 AUG 17 2023
 Federal Manufactured
 Home Construction
 And Safety Standards
 6

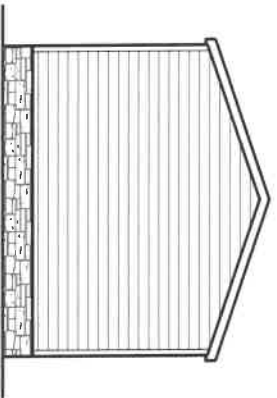
LEGEND	
A	SHORT TURN T.Y
B	LONG TURN T.Y
C	1/4 BEND
D	LONG SWEEP 1/4 BEND
E	45 ELL
F	DBL. SAUVITARY TEE
G	4X3 GLOSET ELL
H	DOUBLE ELL
I	22 1/2 ELL
J	45 T
K	LONG TURN STREET ELBOW
L	45 FTG ELL

D.W. LINE SIZE CHART	
—	= 3"
—	= 2"
—	= 1 1/2"

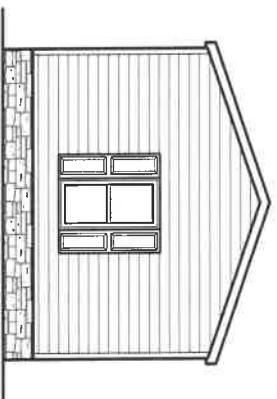
1080 SQ.FT. (STD PLAN "CONDITIONED")	
N/A SQ.FT. (W/OPT. PORCH/RECESS "CONDITIONED")	
CMH MANUFACTURING	Model #: 55R16723B
Product Designer: J PIPES	Date: 07/29/23 Scale: N/A
D.W.V. and Supply Lines	Drawing #: 375163
16' x 72' The Brezze	



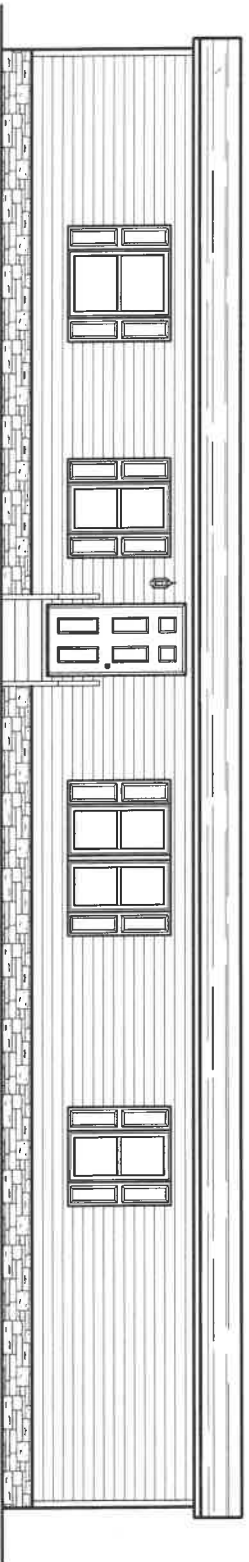
REAR ELEVATION



LEFT ELEVATION



RIGHT ELEVATION

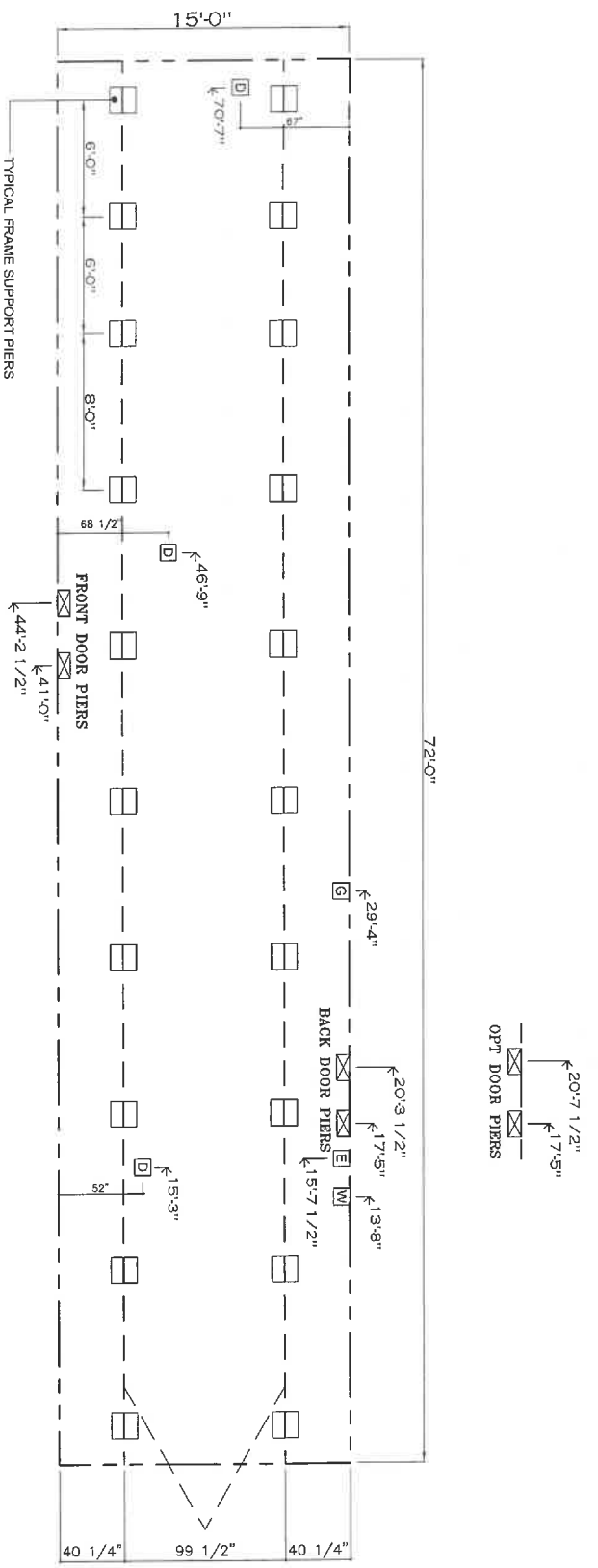


FRONT ELEVATION

		1000 SQ. FT. (STD PLAN "CONDITIONED") N/A SQ. FT. (W/OPT. PORCH/RECESS "CONDITIONED")	
Product Designer: Jessie Lambert	Model #: SSR16723B	Date: 09/15/25	Scale: N/A
	Drawing #: 375163		
ELEVATION		16' x 72' The Breeze	

20 lb ROOF LOAD		SIDEWALL OPENING (FT)							
SIDEWALL OPENING PIER LOAD		REQUIRED PIER LOAD (LBS)							
16" BOX WIDTH		3	4	5	6	8	10		
		1244	1413	1581	1750	2088	2425		

*FOR 30 lb & 40 lb ROOF LOAD REFER TO TABLES 7 & 7a IN THE INSTALLATION MANUAL.



- NOTES:
- REFER TO TABLES 8 AND 9a IN THE INSTALLATION MANUAL FOR LOAD ON FRAME PIER FOOTINGS FOR HOMES THAT DO NOT REQUIRE PERIMETER BLOCKING. REFER TO TABLES 7 AND 7a IN THE INSTALLATION MANUAL FOR LOAD ON FRAME PIER FOOTINGS FOR HOMES THAT REQUIRE PERIMETER BLOCKING. REFER TO TABLES 10 AND 10a TO DETERMINE FOOTING SIZE FOR ALL PIERS.
 - REFER TO TABLE 9 FOR PIER CONFIGURATION AND MAXIMUM ALLOWABLE HEIGHTS. CROSS REFERENCE THE PIER HEIGHT WITH THE MAXIMUM ALLOWABLE FLOOR HEIGHT LISTED IN THE FRAME TIEDOWN CHARTS (TABLE 18, 19, AND 20).
 - THE MAXIMUM SPACING FOR FRAME SUPPORT PIERS FOR 8" I-BEAMS IS 8 FEET, 10" & 12" I-BEAMS IS 10 FEET.
 - SERVICE DROP LOCATIONS IDENTIFIED ARE APPROXIMATE.
 - FLOOR WIDTH SHOWN IS FOR STANDARD PRODUCT ONLY. CONTACT THE MFG FACILITY FOR SPECIFICATIONS OF OPTIONS ORDERED.

SERVICE DROP LEGEND	
E	= ELECTRICAL DROP
W	= WATER INLET
D	= DWV PLUMBING DROP
G	= GAS INLET

PIER LEGEND	
	= PIER MAIN BEAM
	= PIER REQUISITE
	= PIER REINFORCED ENTRY

1080 SQ.FT. (STD PLAN "CONDITIONED")
 N/A SQ.FT. (W/OPT. PORCH/RECESS "CONDITIONED")

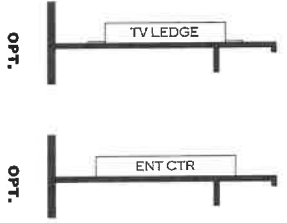
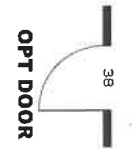
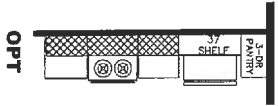
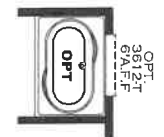
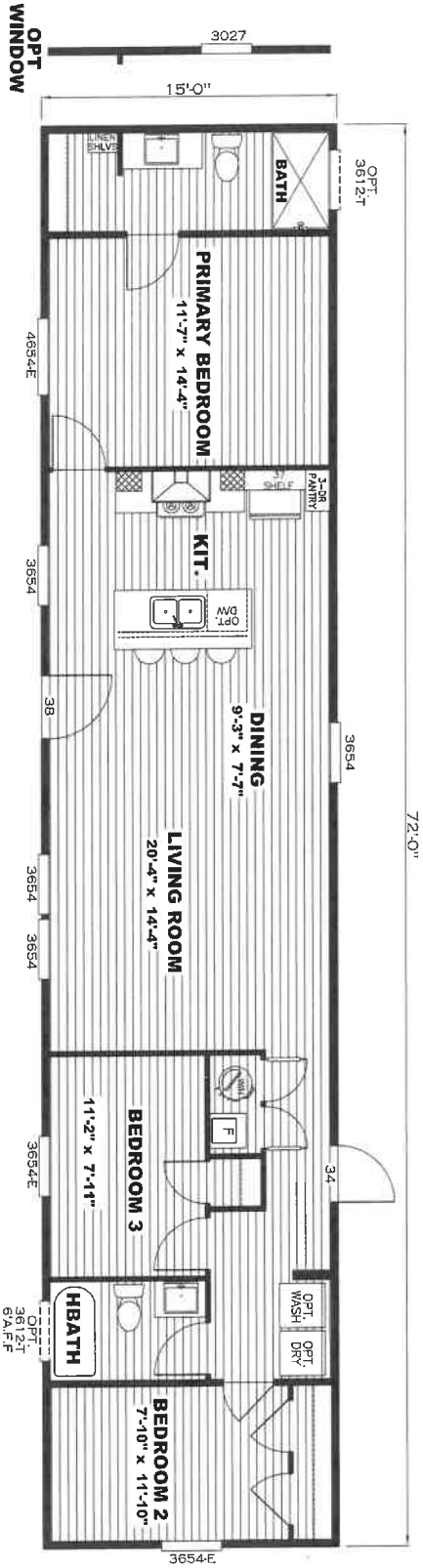
Product Designer: J PIPES

clayton Built

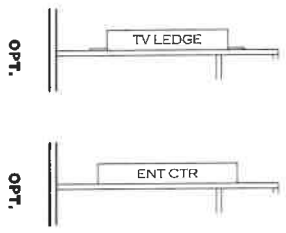
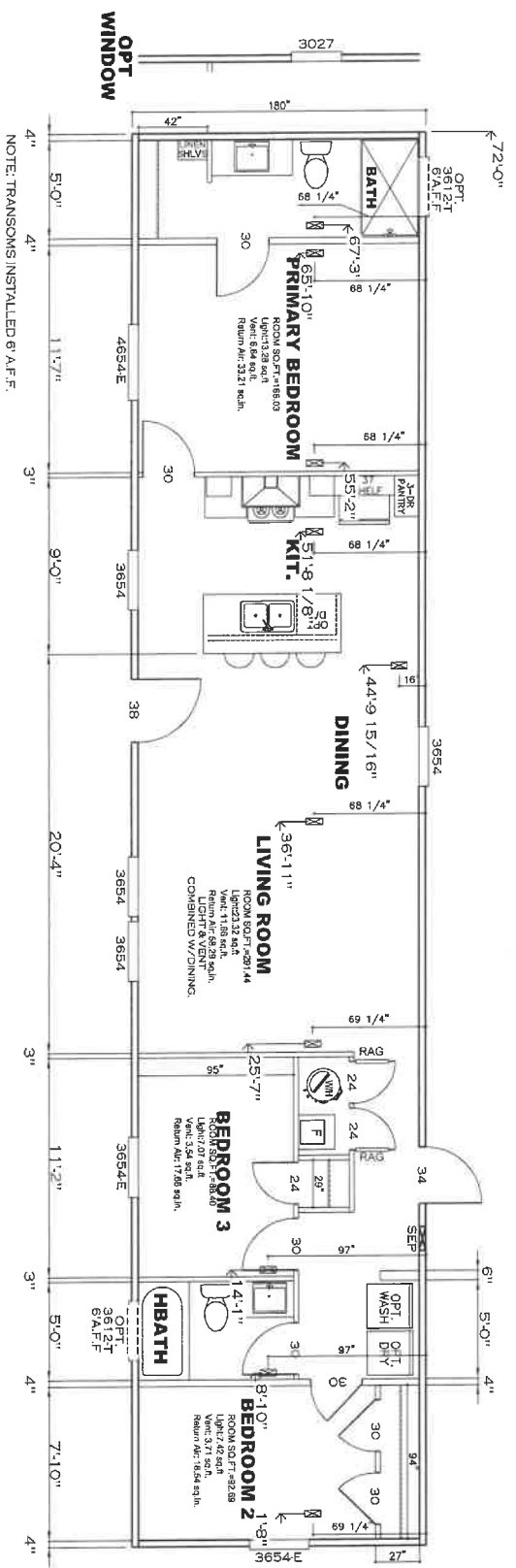
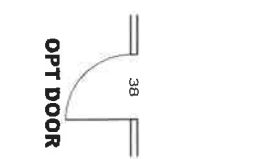
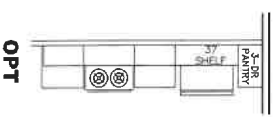
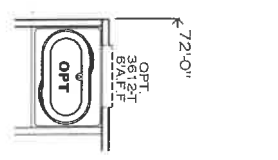
Model #: 55816723B | Drawing #: 375163
 Date: 07/29/23 | Scale: N/A

FRAME PIERS

16' x 72' The Breeze



Model #: SSR16723B
 Drawing #: 375163
 16' x 72' The Breeze



APPROVED

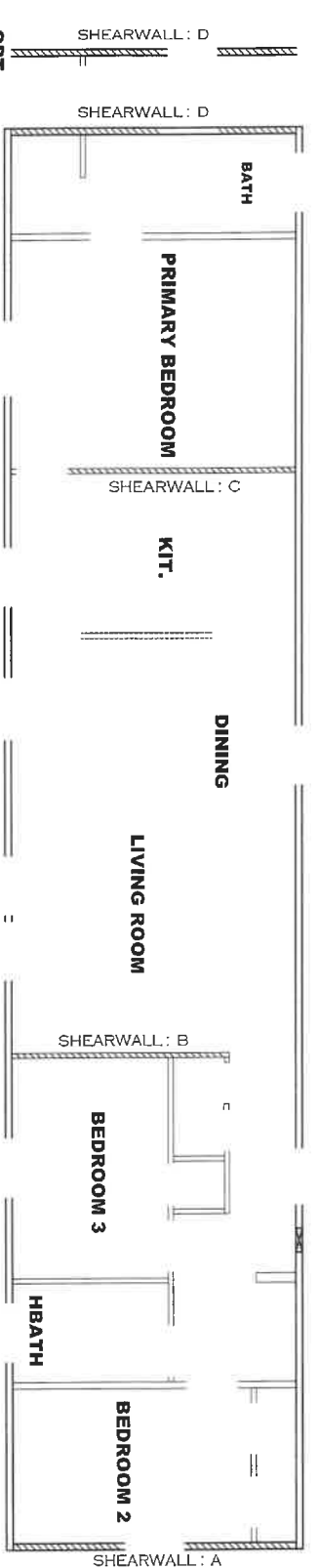
DEC 30 2024

REVISED

APPROVED

Federal Manufactured
Home Construction
And Safety Standards

1080 SQ.FT. (STD PLAN "CONDITIONED")	
N/A SQ.FT. (W/OPT. PORCH/RECESS "CONDITIONED")	
Clayton Built	Model #: SSR1G723B
Product Designer: J PIPES	Date: 07/29/23 Scale: N/A
16' x 72' The Breeze	Drawing #: 3/5163



Model # 37S163-OPT WINDOW
 Box Width = 180" Single wide
 Box Length = 72 ft. 99.5" 12" MIN. I.BEAM
 No Skylights
 No Porches
 Joist Size = #2 sp 2x6 Lags 9Mx3"

Minimum Joist Spacing 16"

No Offset Box
 No Clerestory
 No Origami Dormer
 No Sunken Floor
 No Parapet Roof

Version R14.00

Wind Zone 1 Standard Roof
 7/16" Rated Sheathing and Ceiling Board with 15 ga staple @ 6/12 (286,315) Chords: 2x4 SPF #3 Top
 Plate spliced w/2x4 MCP & 2x3 SPF Rail spliced w/ 2x4 MCP

Shearwall	Dist./ Hitch	Length	PLF	# of Joists	Lags	Notes
A	0'	135.5"	162	2	1/1	Split Shearwall * 67.75/67.75
B	25.04'	128"	350	2	3/1	
D	72'	141.5"	162	2	2/2	Split Shearwall 48/93.5

Wind Zone 2 Standard Roof
 7/16" Rated Sheathing and Ceiling Board with 15 ga staple @ 6/12 (286,315) Chords: 2x4 SPF #3 Top
 Plate spliced w/2x4 MCP & 2x3 SPF Rail spliced w/ 2x4 MCP

Shearwall	Dist./ Hitch	Length	PLF	# of Joists	Lags	Notes
A	0'	135.5"	350	2	3/3	Split Shearwall * 67.75/67.75
B	25.04'	128"	430	3	4/1	
C	54.62'	128"	350	2	3/1	
D	72'	141.5"	162	2	1/1	Split Shearwall 48/93.5

Wind Zone 3 Standard Roof
 7/16" Rated Sheathing and Ceiling Board with 15 ga staple @ 6/12 (286,315) Chords: 2x4 SPF #3 Top
 Plate spliced w/2x4 MCP & 2x3 SPF Rail spliced w/ 2x4 MCP

Shearwall	Dist./ Hitch	Length	PLF	# of Joists	Lags	Notes
A	0'	135.5"	350	2	3/3	Split Shearwall * 67.75/67.75
B	25.04'	128"	520	4	5/2	
C	54.62'	128"	430	3	4/1	
D	72'	141.5"	162	2	2/2	Split Shearwall 48/93.5

* Denotes that indicated shearwall is over full depth/width front steel chassis header.

Model # 37S163
 Box Width = 180" Single wide
 Box Length = 72 ft. 99.5" 12" MIN. I.BEAM
 No Skylights
 No Porches
 Joist Size = #2 sp 2x6 Lags 9Mx3"

Minimum Joist Spacing 16"

No Offset Box
 No Clerestory
 No Origami Dormer
 No Sunken Floor
 No Parapet Roof

Version R14.00

Wind Zone 1 Standard Roof
 7/16" Rated Sheathing and Ceiling Board with 15 ga staple @ 6/12 (286,315) Chords: 2x4 SPF #3 Top
 Plate spliced w/2x4 MCP & 2x3 SPF Rail spliced w/ 2x4 MCP

Shearwall	Dist./ Hitch	Length	PLF	# of Joists	Lags	Notes
A	0'	135.5"	162	2	1/1	Split Shearwall * 67.75/67.75
B	25.04'	128"	350	2	3/1	
D	72'	108"	162	2	2/1	

Wind Zone 2 Standard Roof
 7/16" Rated Sheathing and Ceiling Board with 15 ga staple @ 6/12 (286,315) Chords: 2x4 SPF #3 Top
 Plate spliced w/2x4 MCP & 2x3 SPF Rail spliced w/ 2x4 MCP

Shearwall	Dist./ Hitch	Length	PLF	# of Joists	Lags	Notes
A	0'	135.5"	350	2	3/3	Split Shearwall * 67.75/67.75
B	25.04'	128"	430	3	4/1	
C	54.62'	128"	350	2	3/1	
D	72'	104"	162	2	1/1	

Wind Zone 3 Standard Roof
 7/16" Rated Sheathing and Ceiling Board with 15 ga staple @ 6/12 (286,315) Chords: 2x4 SPF #3 Top
 Plate spliced w/2x4 MCP & 2x3 SPF Rail spliced w/ 2x4 MCP

Shearwall	Dist./ Hitch	Length	PLF	# of Joists	Lags	Notes
A	0'	135.5"	350	2	3/3	Split Shearwall * 67.75/67.75
B	25.04'	128"	520	4	5/2	
C	54.62'	128"	430	3	4/1	
D	72'	124"	162	2	2/1	

* Denotes that indicated shearwall is over full depth/width front steel chassis header.

37s163-SW-0-N

APPROVED



SEP 24 2025
 Patent Manufacturing
 All Safety Standards

APPROVED

1080 SQ.FT. (STD PLAN "CONDITIONED")
 N/A S.O.F.T. (W/OPT. PORCH/RECESS "CONDITIONED")
 Model #: 55R167235
 Date: 09/15/25 Scale: N/A
 Drawing #: 3751163
 Product Designer: Jessie Lambert
 SHEARWALL PAGE O-N