



APPROVED



AUG 15 2023

REVISED

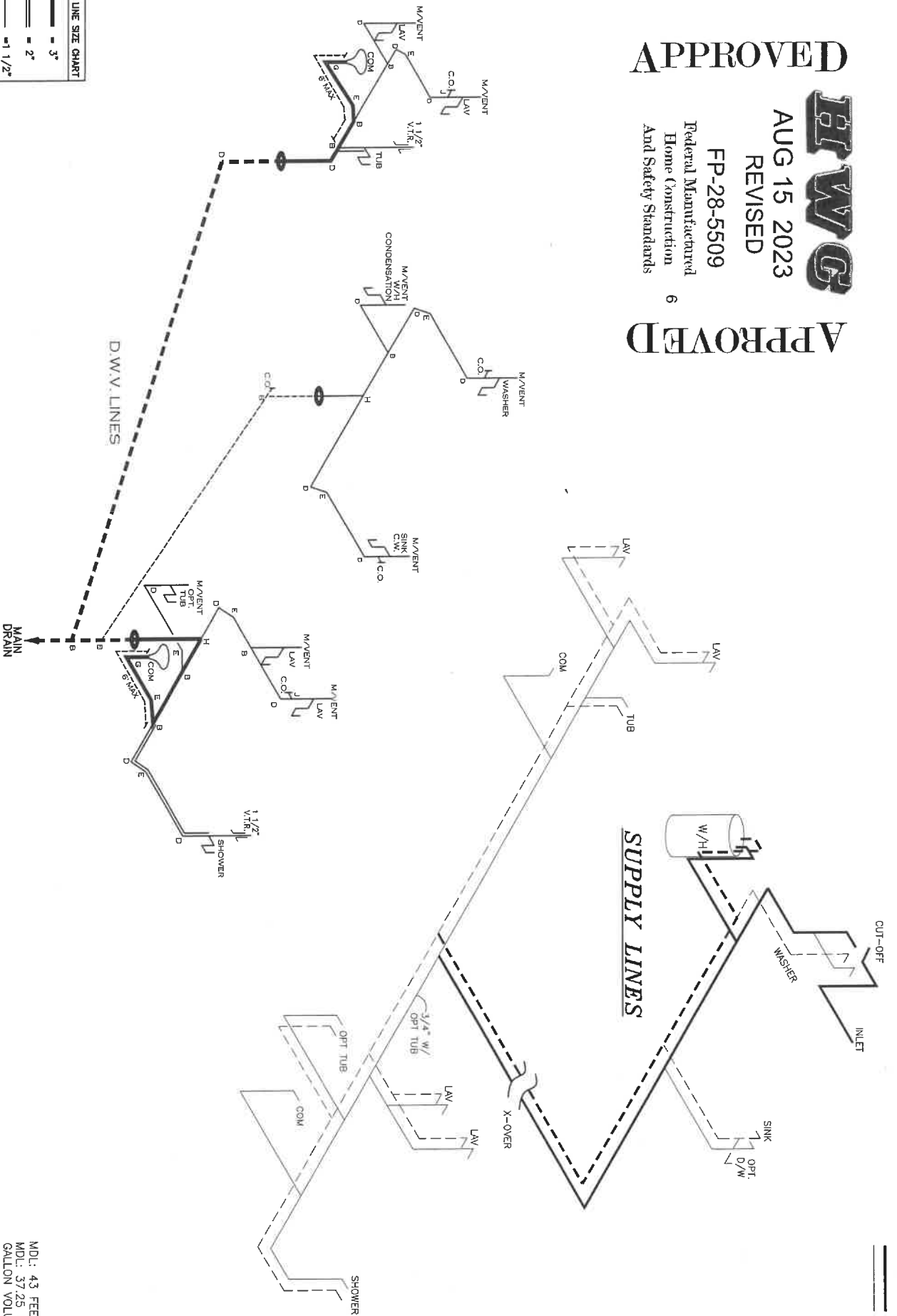
FP-28-5509

Federal Manufactured Home Construction And Safety Standards

APPROVED

6

NOTE:  
DASHED LINES INDICATES HOT WATER  
SOLID LINES INDICATES COLD WATER  
— = 3/4"  
— = 1/2"



LEGEND

A	SHORT TURN T-Y
B	LONG TURN T-Y
C	1/4 BEND
D	LONG SWEEP 1/4 BEND
E	45 ELL
F	DBL. SANITARY TEE
G	4X3 CLOSET ELL
H	DOUBLE ELL
I	22 1/2" ELL
J	45 Y
K	LONG TURN STREET ELBOW
L	45 TIG ELL

DWV LINE SIZE CHART

—	3"
—	2"
—	1 1/2"

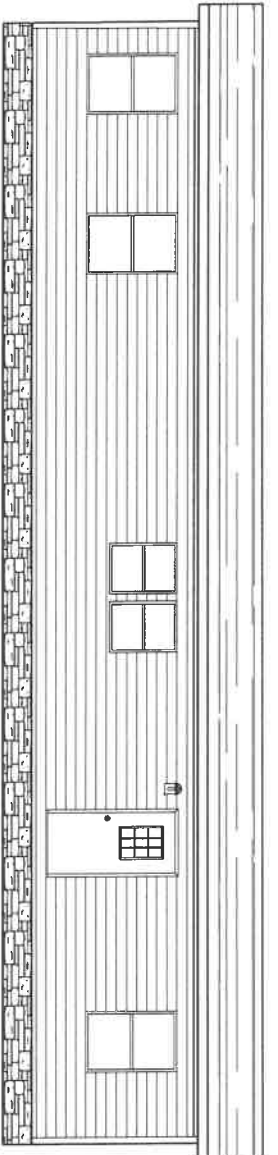
MDL: 43 FEET - 3/4"  
MDL: 37.25 FEET - 1/2"  
GALLON VOLUME: 1.13

1530 SQ.FT. (STD PLAN "CONDITIONED")  
N/A SQ.FT. (W/OPT. PORCH/RECESS "CONDITIONED")

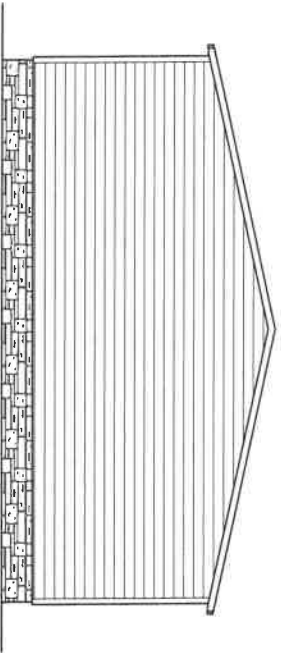
Product Designer: E HARDWICK

Model #: JSB28563C	Drawing #:	
Date: 1/22/22	Scale: NTS	37M204

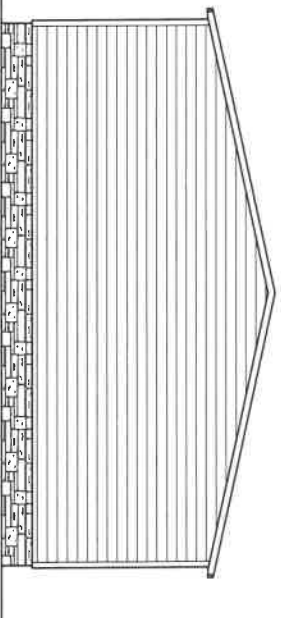
D.W.V. and Supply Lines



**REAR ELEVATION**



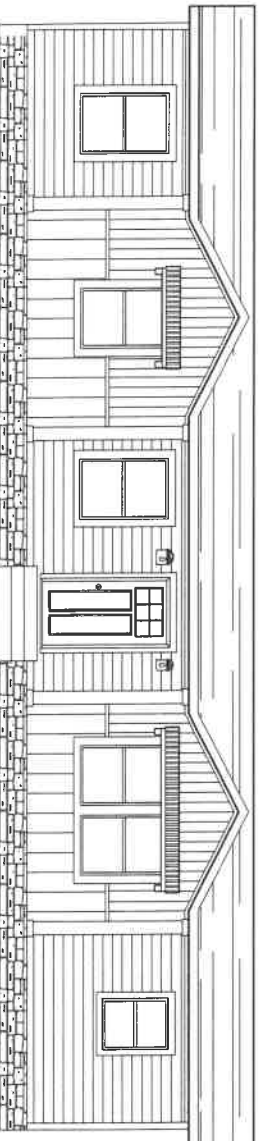
**LEFT ELEVATION**



**RIGHT ELEVATION**

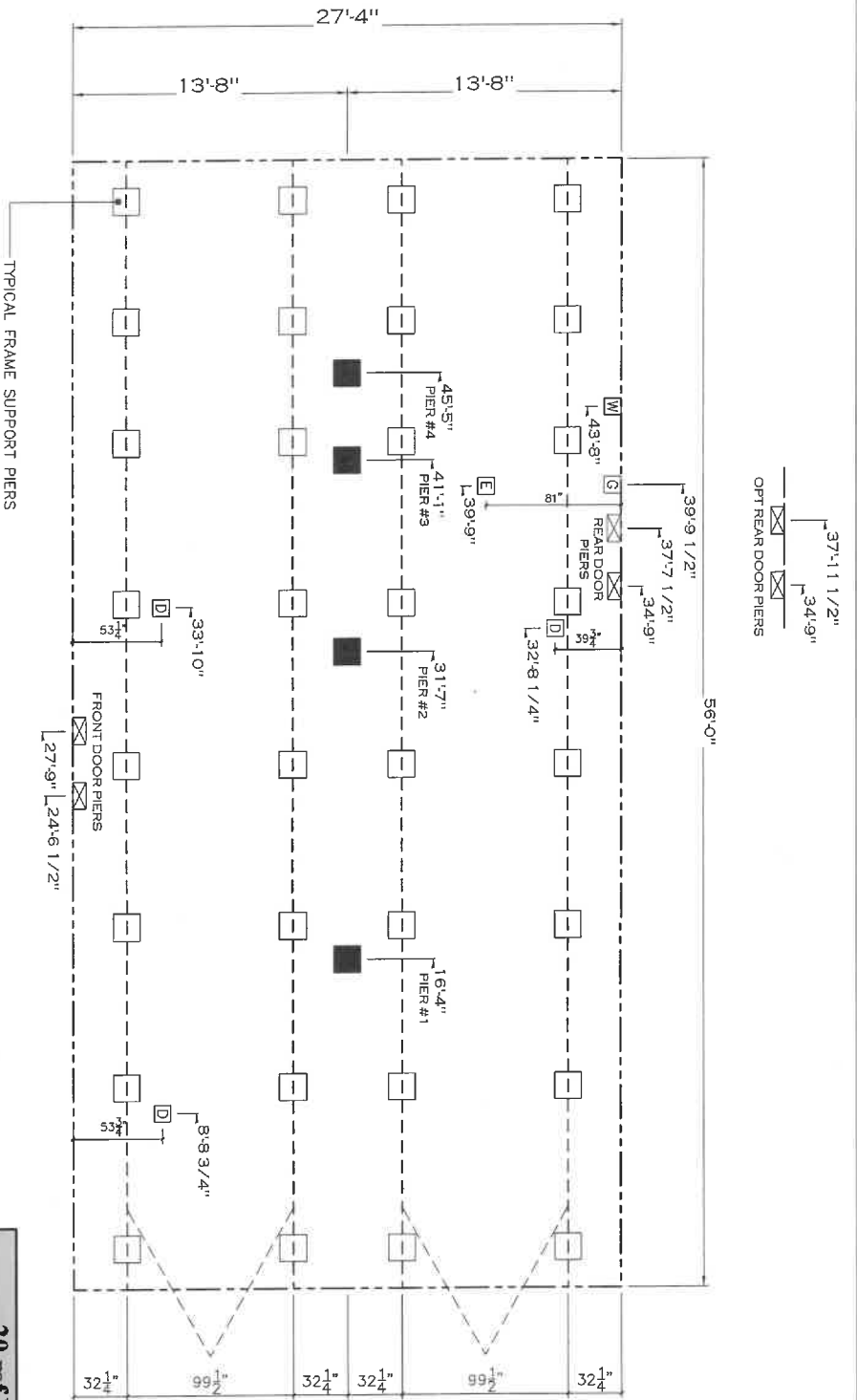


**FRONT ELEVATION**



**OPT. FRONT ELEVATION**

1530 SQ.FT. (SID PLAN "CONDITIONED")	
N/A SQ.FT. (W/OPT. PORCH/RECESS "CONDITIONED")	
<b>CMH</b>	Model # <b>ISB28563C</b>
MANUFACTURING	Date: 1/1/22
Product Designer: <b>E.HARDWICK</b>	Series: <b>NTS</b>
<b>ELEVATION</b>	Drawing #: <b>37W204</b>
	<b>28' x 56' Savannah Breeze</b>



**SERVICE DROP LEGEND**

- E = ELECTRICAL DROP
- W = WATER INLET
- D = DWV PLUMBING DROP
- G = GAS INLET

**PIER LEGEND**

- = SUPPORT UNDER MATING OPENING
- = SUPPORT AT MATING COLUMN
- ▣ = SUPPORT UNDER MATING WALL
- = PIER PORCH/RECESS ENTRY
- = PIER MAIN BEAM
- ⊖ = PIER PERIMETER

- GENERAL NOTES:**
- PIER LOADS SHOWN ARE TO BE USED TO SIZE THE FOOTINGS BELOW THE MARRIAGEWALL FOR COLUMN SUPPORT PIERS. REFER TO TABLES 6b AND 6c IN THE INSTALLATION MANUAL FOR LOAD ON FRAME PIER FOOTINGS FOR HOMES THAT DO NOT REQUIRE PERIMETER BLOCKING. REFER TO TABLES 7b AND 7c IN THE INSTALLATION MANUAL FOR LOAD ON FRAME PIER FOOTINGS THAT REQUIRE PERIMETER BLOCKING. REFER TO TABLES 10 AND 10a TO DETERMINE FOOTING SIZE FOR ALL PIERS.
  - REFER TO TABLE 9 FOR PIER CONFIGURATION AND MAXIMUM ALLOWABLE HEIGHTS. CROSS REFERENCE THE PIER HEIGHT WITH THE MAXIMUM ALLOWABLE FLOOR HEIGHT LISTED IN THE FRAME TIEDOWN CHARTS (TABLE 18, 19, AND 20).
  - FLOOR WIDTH SHOWN IS FOR STANDARD PRODUCT ONLY. CONTACT THE MFG. PLANT FOR SPECIFICATIONS OF OPTIONS ORDERED.
  - SERVICE DROP LOCATIONS IDENTIFIED ARE APPROXIMATE.
  - THE MAXIMUM SPACING FOR 8" I-BEAMS IS 8 FEET, 10" & 12" I-BEAMS ARE 10 FEET.

Column Pier #	Distance from Hitch	Pier Load (lbs)
1	16.333	3526
2	31.583	3526
3	41.083	1288
4	45.417	1288

SIDEWALL OPENING PIER LOAD 28' BOX WIDTH	SIDEWALL OPENING (FT)				
	3	4	5	6	8
20 lb ROOF LOAD	1175	1330	1485	1640	1950
40 lb ROOF LOAD	1175	1330	1485	1640	1950

\*FOR 30 lb & 40 lb ROOF LOAD REFER TO TABLES 7b & 7c IN THE INSTALLATION MANUAL.

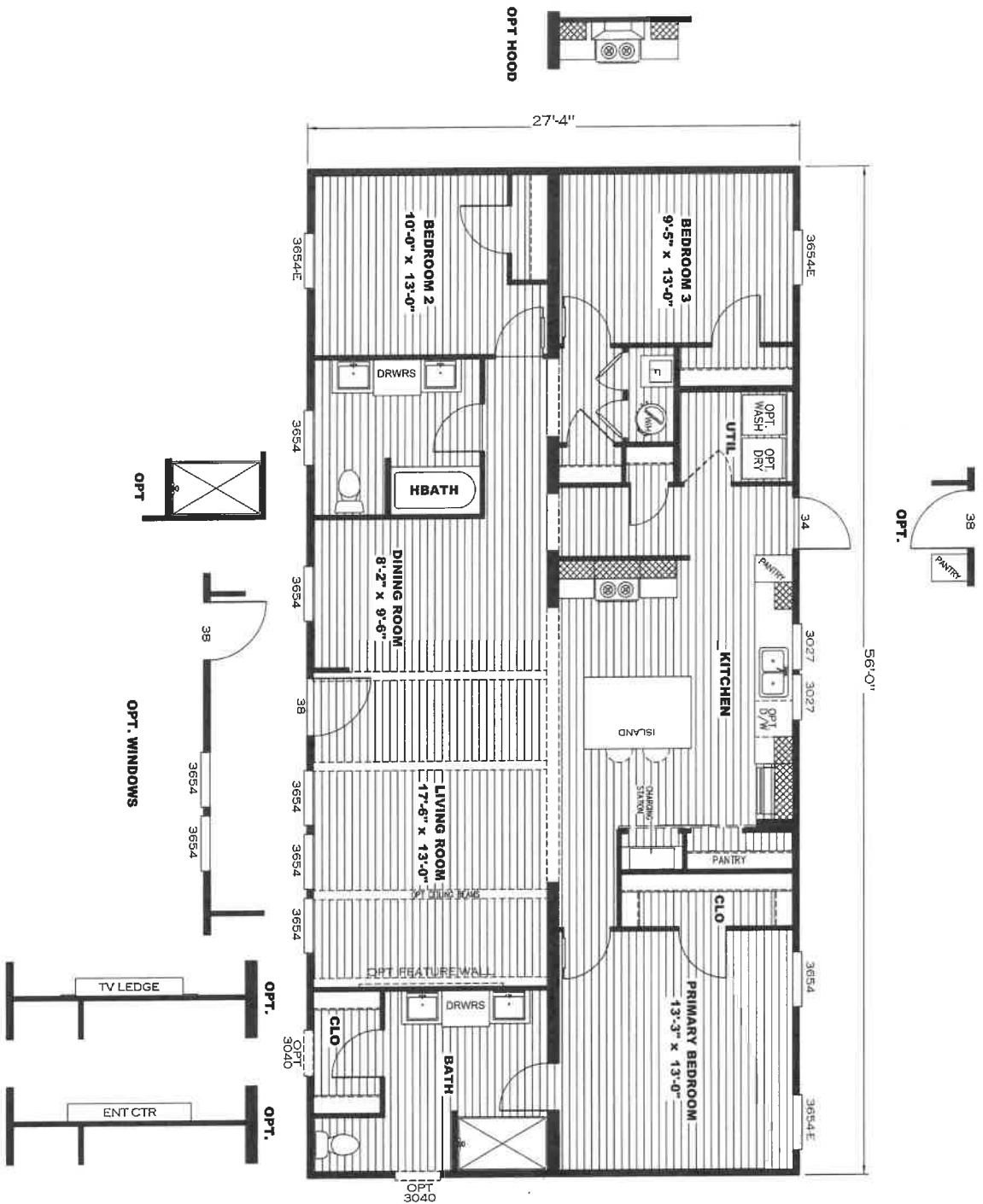
1530 SQ.FT. (STD PLAN "CONDITIONED")  
N/A SQ.FT. (W/OPT. PORCH/RECESS "CONDITIONED")

**clayton Built**

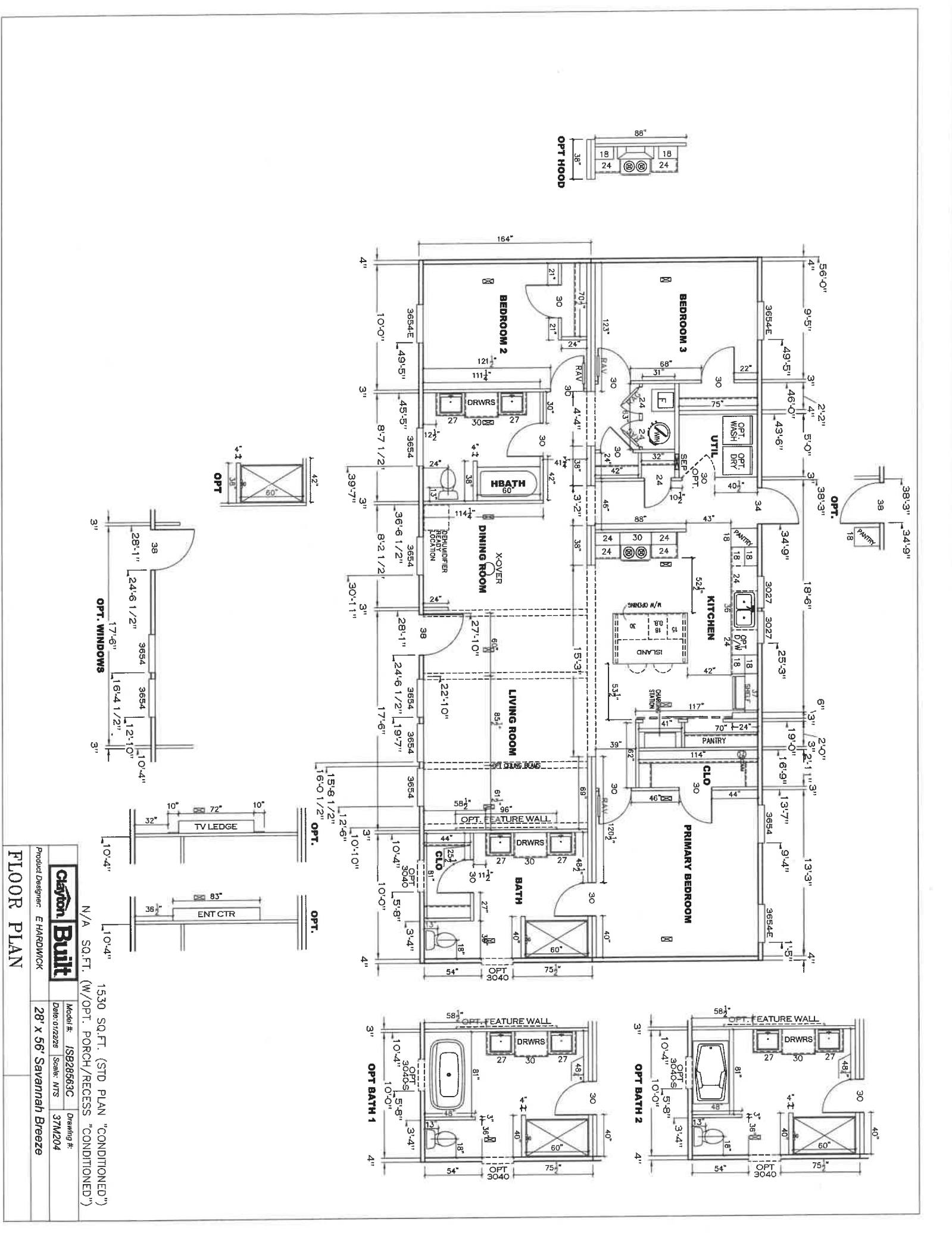
Product Designer: E HARDWICK      Model #: ISB28563C      Date: 1/12/22      Scale: NTS      Drawing #: 37M204

**PIER LOADS**

28' x 56' Savannah Breeze

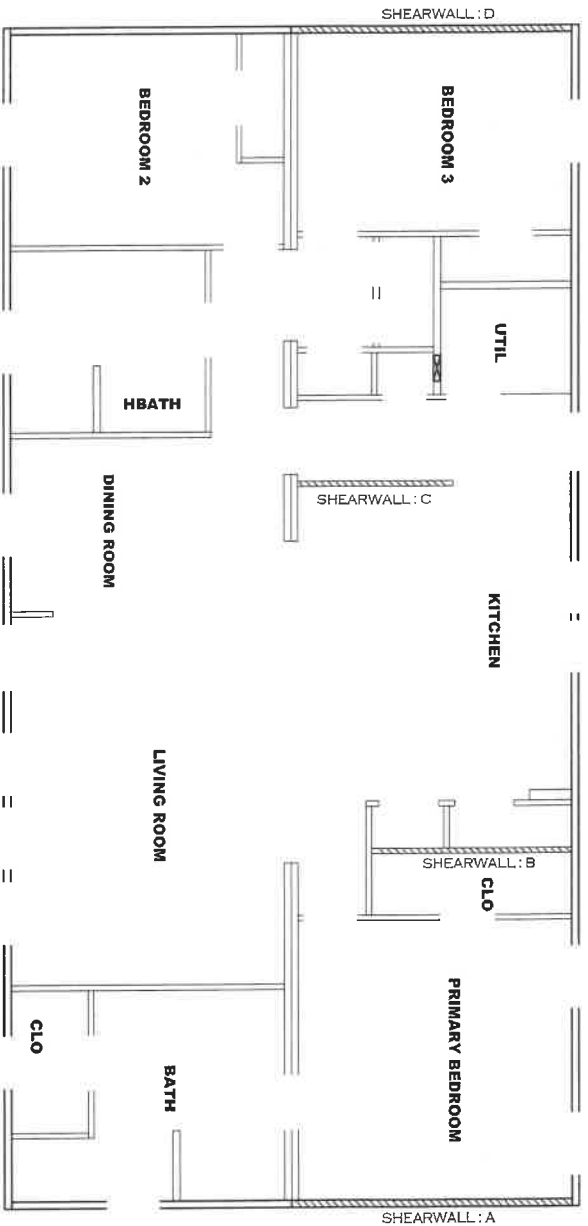


**28' x 56' Savannah Breeze**  
 Model #: ISB28563C  
 Drawing #: 37M204



**Chayton Built**  
 Product Designer: E HARDWICK  
 Model #: ISB28563C  
 Date: 01/22/28  
 Scale: NTS  
 Drawing #: 37M204

**FLOOR PLAN**  
 1530 SQ.FT. (STD PLAN "CONDITIONED")  
 N/A SQ.FT. (W/OPT. PORCH/RECESS "CONDITIONED")  
 28' x 56' Savannah Breeze



**Model # 37M204**  
 Box Width = 164 " Double wide  
 Box Length = 56 ft. 99.5" 12" MINILIBEAM  
 No Skylights No Clerestory  
 No Porches No Original Dormer  
 Joist Size = #2 sp 2x6 Lags 9Mx3" No Sunken Floor  
 No Parapet Roof

**Version R14.00**

**Wind Zone 1 Standard Roof** 7/16" Rated Sheathing and Ceiling Board with 15 ga staple @ 6/12 (286, 315) Chords: 2x4 SPF #3 Top Plate spliced w/2x4 MCP & 2x3 SPF Rail spliced w/ 2x4 MCP

Shearwall	Dist./ Hitch	Length	PLF	# of Joists	Lags	Notes
A	0'	96"	182	2	1/1	*
C	34.29'	84"	250	4	2/1	Start at marriage wall
D	56'	52"	162	2	1/1	

**Wind Zone 2 Standard Roof** 7/16" Rated Sheathing and Ceiling Board with 15 ga staple @ 6/12 (286, 315) Chords: 2x4 SPF #3 Top Plate spliced w/2x4 MCP & 2x3 SPF Rail spliced w/ 2x4 MCP

Shearwall	Dist./ Hitch	Length	PLF	# of Joists	Lags	Notes
A	0'	100"	162	2	2/1	*
B	16.87'	112"	430	4	4/1	
C	34.29'	88"	430	7	3/1	Start at marriage wall
D	56'	128"	162	2	2/1	

**Wind Zone 3 Standard Roof** 7/16" Rated Sheathing and Ceiling Board with 15 ga staple @ 6/12 (286, 315) Chords: 2x4 SPF #3 Top Plate spliced w/2x4 MCP & 2x3 SPF Rail spliced w/ 2x4 MCP

Shearwall	Dist./ Hitch	Length	PLF	# of Joists	Lags	Notes
A	0'	120"	162	2	2/1	*
B	16.87'	112"	430	4	4/1	
C	34.29'	88"	520	9	3/1	Start at marriage wall
D	56'	152"	162	2	2/1	

\* Denotes that indicated shearwall is over full depthwidth front steel chassis header.

**APPROVED**  
**HTWG**  
 DEC 10 2025  
 REVISED  
 FP-28-5509  
 Federal Manufactured Home Construction And Safety Standards  
 6  
**APPROVED**

37M204-SW-0-N

1530 SQ.FT. (STD PLAN "CONDITIONED")  
 N/A SQ.FT. (W/OPT. PORCH/RECESS "CONDITIONED")

**Clayton Built**  
 Product Designer: E HARROWICK  
 Model #: ISB28563C  
 Date: 11/29/25  
 Scale: NTS  
 Drawing #: 37M204  
 SHEARWALL PAGE ON-N