

**BATH OPT. 2**

**NOTES:**

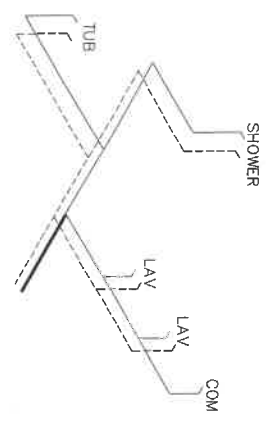
1. ALL CIRCUITS SHOWN ARE FOR REFERENCE AND MAY BE CHANGED BASED ON OPTIONAL COMPONENTS INSTALLED IN THE HOME.
2. REFER TO DAPIA MANUAL FOR SYMBOL CHART.
3. EITHER LIGHT OR RECEPTACLE MUST CONNECT TO SWITCH.
4. EF-1= 50 CFM EXHAUST FAN REQUIRED FOR THERMAL ZONE III. THERMAL ZONES I & II MAY USE FAN OR WINDOW W/1.5 SQ. FT. OPENABLE GLASS.
5. EF-2= 50 CFM EXHAUST FAN REQUIRED THERMAL ZONE I, II, AND III.
6. EF-3= 100 CFM RANGE EXHAUST FAN, SWITCH AT HOOD.
7. EF-4= WHOLE HOUSE VENTILATION REQUIREMENTS PER DAPIA MANUAL.
8. REFER TO DAPIA MANUAL OR THE MFG. INSTALLATION INSTRUCTIONS FOR PROPER WIRE SIZE AND BREAKER SIZE FOR SPECIFIC APPLIANCE AND MODEL BEING INSTALLED.
9. ALL SMOKE ALARMS TO BE LOCATED ON THE CEILING.
10. CARBON MONOXIDE ALARMS ARE ONLY REQUIRED WHEN HOME HAS EITHER FUEL BURNING APPLIANCES, IS GARAGE READY OR ADDITIONAL INFORMATION.
11. DIMENSIONS SHOWN ON PRINT ARE APPROXIMATE AND TO BE USED ONLY AS A GUIDELINE.

CIRCUIT	CIRCUIT #	WIRE	BREAKER	CIRCUIT	CIRCUIT #	WIRE	BREAKER	CIRCUIT	CIRCUIT #	WIRE	BREAKER
LIGHT/RECP	1A,1B,3A,3B	14-2	15-SP	WATER HEATER	4A,6B	SEE NOTE #8	SEE NOTE #8	BATHROOM	16A	12-2	20-SP
KITCHEN/SHWO	2A,2B	12-2	20-SP	RANGE	5B,7A	SEE NOTE #8	SEE NOTE #8	OPT G/D/SP	9B	SEE NOTE #8	SEE NOTE #8
WASHER	12A	12-2	20-SP	FRNDR	15B	SEE NOTE #8	SEE NOTE #8	W/PLAC	11A,B	SEE NOTE #8	SEE NOTE #8
DRYER	5A,7B	SEE NOTE #8	SEE NOTE #8	SMOKE ALARM	9A	SEE NOTE #8	SEE NOTE #8	FREEZER	N/A	SEE NOTE #8	SEE NOTE #8
					4B	SEE NOTE #8	SEE NOTE #8				

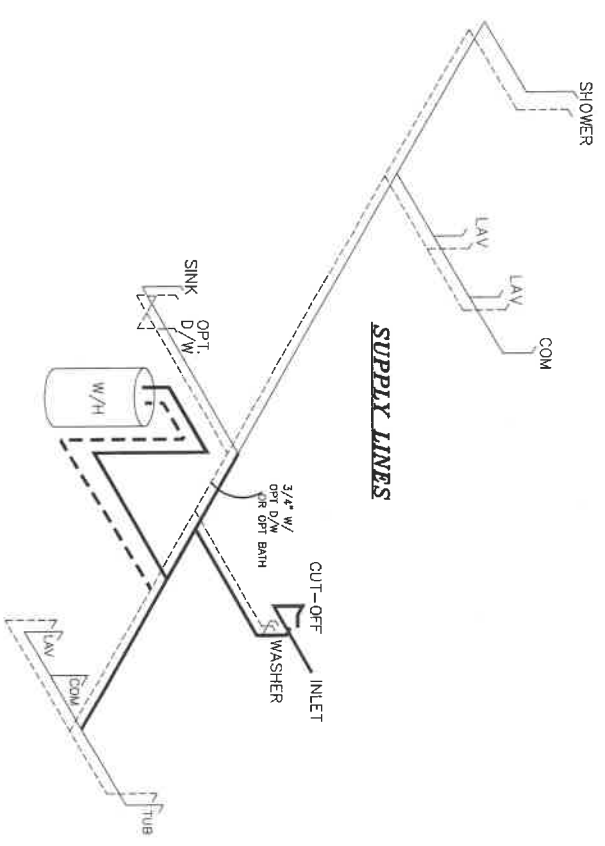
**APPROVED**  
**HWG**  
 JUN 17 2025  
 REVISED  
 Federal Manufactured  
 Home Construction  
 And Safety Standards  
 6  
**APPROVED**

**Clayton Built**  
 Product Designer: J.P.F.ES  
 Model #: ANN16763E Drawing #: 375167  
 Date: 06/10/25 Scale: N.T.S.  
 1140 SQ.FT. (STD PLAN "CONDITIONED")  
 W/OPT. PORCH/RECESS "CONDITIONED"  
**ELECTRICAL PLAN-06**

NOTE:  
 DASHED LINES INDICATE HOT WATER  
 SOLID LINES INDICATE COLD WATER

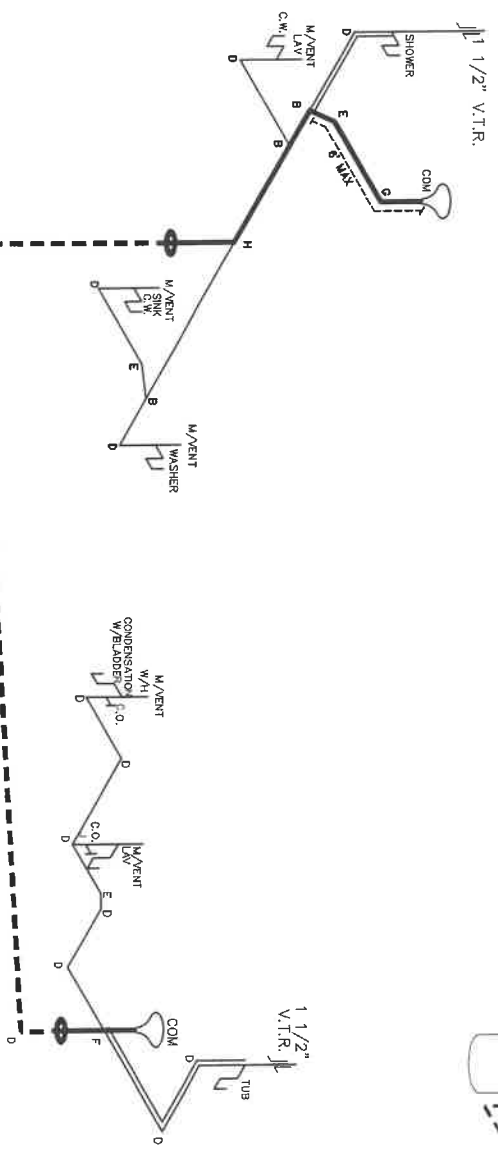
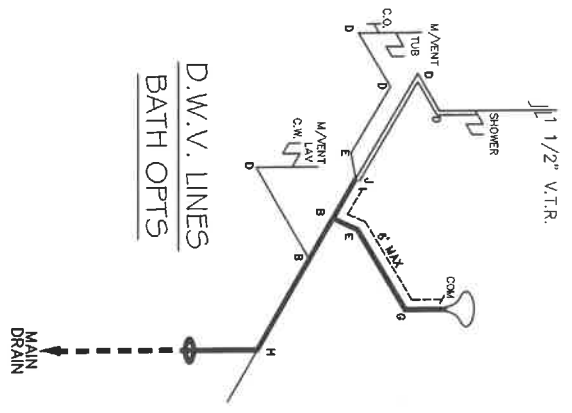


**SUPPLY LINES  
 BATH OPTS**



**SUPPLY LINES**

**D.W.V. LINES  
 BATH OPTS**



**D.W.V. LINES**

**LEGEND**

A	SHORT TURN 1-Y
B	LONG TURN 1-Y
C	LONG BEND 1-1-Y
D	LONG SWEEP 1/4 BEND
E	45° EL
F	DBL SANITARY TEE
G	4x3 OFFSET EL
H	3" DOUBLE EL
I	22 1/2° EL
J	45° Y
K	LONG TURN STREET ELBOW
L	45° FTG EL

**DWV LINE SIZE CHART**

—	= 3"
—	= 2"
—	= 1 1/2"

**APPROVED**

**APPROVED**

**AUG 08 2023**

Federal Manufacturing  
 Home Construction  
 And Safety Standards

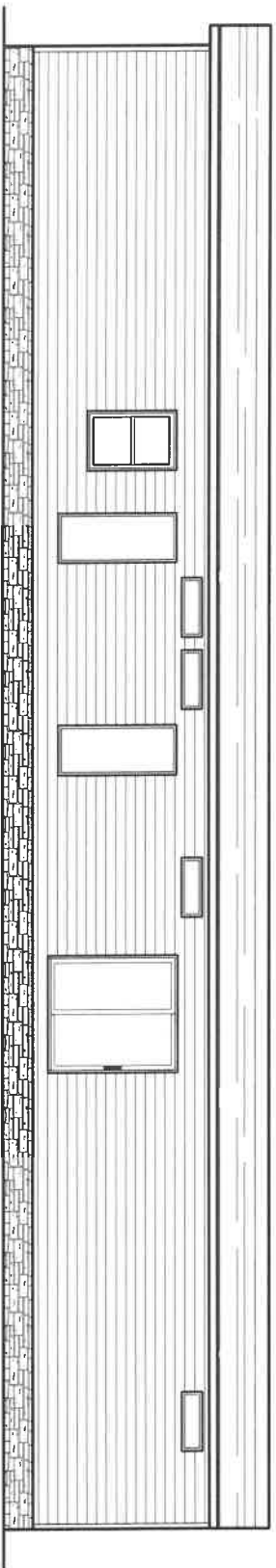
1140 SQ.FT. (STD PLAN "CONDITIONED")  
 N/A SQ.FT. (W/OPT. PORCH/RECESS "CONDITIONED")

**CMH**  
 MANUFACTURING

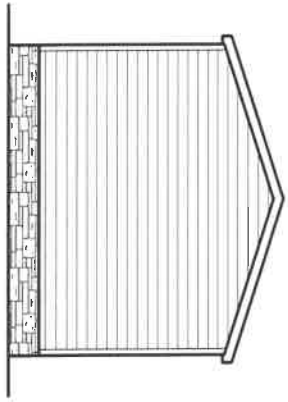
Model #: ANN16763E | Drawing #: 375167  
 Date: 07/26/23 | Scale: N:1.5

Product Designer: J.PIPES

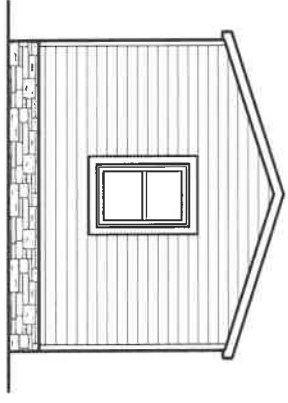
**D.W.V. and Supply Lines**



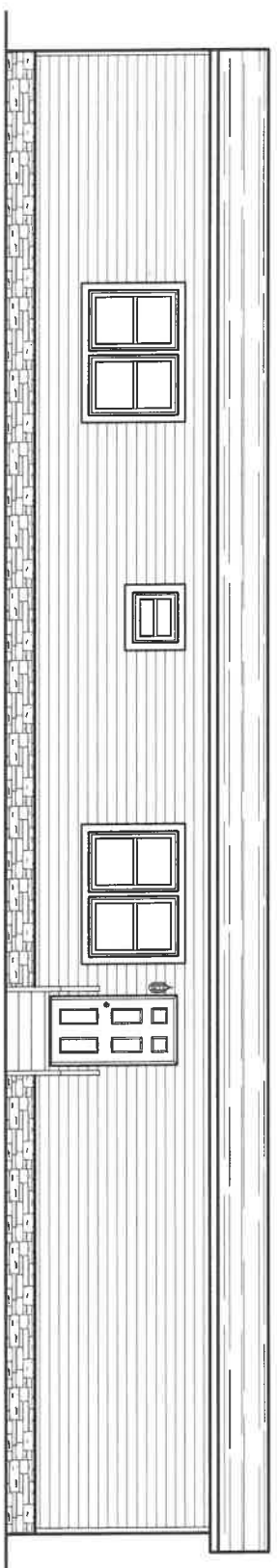
REAR ELEVATION



LEFT ELEVATION



RIGHT ELEVATION

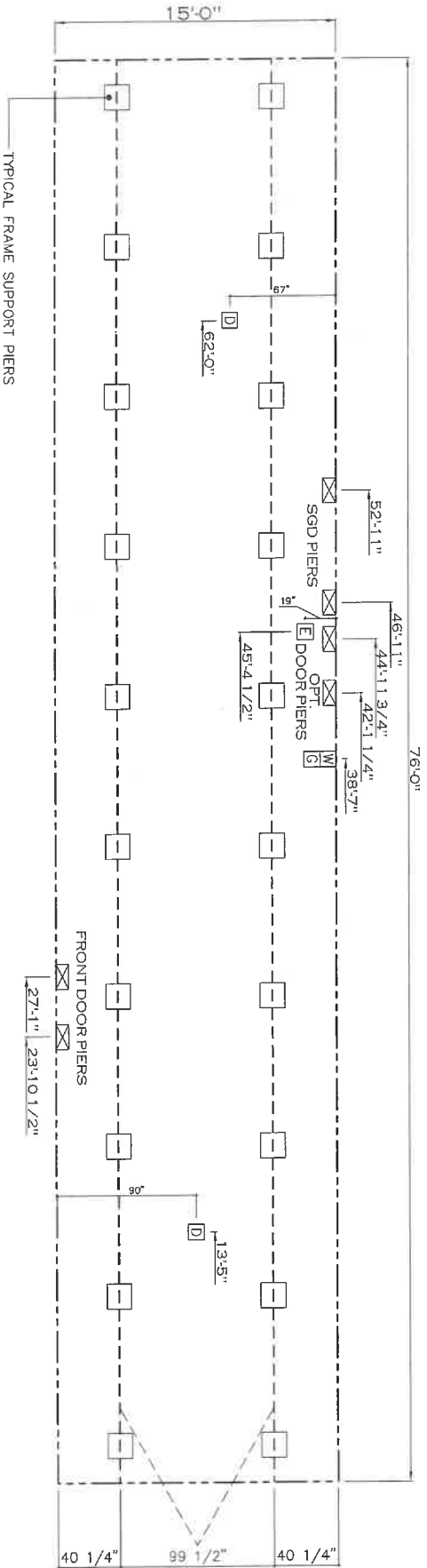


FRONT ELEVATION

<p><b>1140 SQ.FT. (STD PLAN "COMMONED")</b>  <b>N/A SQ.FT. (W/OPT. PORCH/RECESS "COMMONED")</b></p>	
<p><b>Clayton</b>          Home Building Group</p>	<p>Model #: AN1167G3E          Drawing #:          375167</p>
<p>Product Designer: Jessica Lambert</p>	<p>Date: 01/23/26 Scale: N.T.S.          16' x 76' Anniversary Entertainer</p>
<p>ELEVATION</p>	

20 lb ROOF LOAD		SIDEWALL OPENING (FT)					
SIDEWALL OPENING PIER LOAD		REQUIRED PIER LOAD (LBS)					
16' BOX WIDTH		3	4	5	6	8	10
		1244	1413	1581	1750	2088	2425

\*FOR 30 lb & 40 lb ROOF LOAD REFER TO TABLES 7 & 7a IN THE INSTALLATION MANUAL.



- NOTES:
- REFER TO TABLES 6 AND 6a IN THE INSTALLATION MANUAL FOR LOAD ON FRAME PIER FOOTINGS FOR HOMES THAT DO NOT REQUIRE PERIMETER BLOCKING. REFER TO TABLES 7 AND 7a IN THE INSTALLATION MANUAL FOR LOAD ON FRAME PIER FOOTINGS FOR HOMES THAT REQUIRE PERIMETER BLOCKING. REFER TO TABLES 10 AND 10a TO DETERMINE FOOTING SIZE FOR ALL PIERS.
  - REFER TO TABLE 9 FOR PIER CONFIGURATION AND MAXIMUM ALLOWABLE HEIGHTS. CROSS REFERENCE THE PIER HEIGHT WITH THE MAXIMUM ALLOWABLE FLOOR HEIGHT LISTED IN THE FRAME TIEDOWN CHARTS (TABLE 18, 19, AND 20).
  - THE MAXIMUM SPACING FOR FRAME SUPPORT PIERS FOR 8" I-BEAMS IS 8 FEET, 10" & 12" I-BEAMS IS 10 FEET.
  - SERVICE DROP LOCATIONS IDENTIFIED ARE APPROXIMATE.
  - FLOOR WIDTH SHOWN IS FOR STANDARD PRODUCT ONLY. CONTACT THE MFG. FACILITY FOR SPECIFICATIONS OF OPTIONS ORDERED.

SERVICE DROP LEGEND	
	E = ELECTRICAL DROP
	W = WATER INLET
	D = DWV PLUMBING DROP
	G = GAS INLET

PIER LEGEND	
	□ = PIER MAIN BEAM
	▣ = PIER PERIMETER
	■ = PIER PORCH/ACCESSED ENTRY

1140 SQ.FT. (STD PLAN "CONDITIONED")  
 N/A SQ.FT. (W/OPT. PORCH/RECESS "CONDITIONED")

**Caston Built**

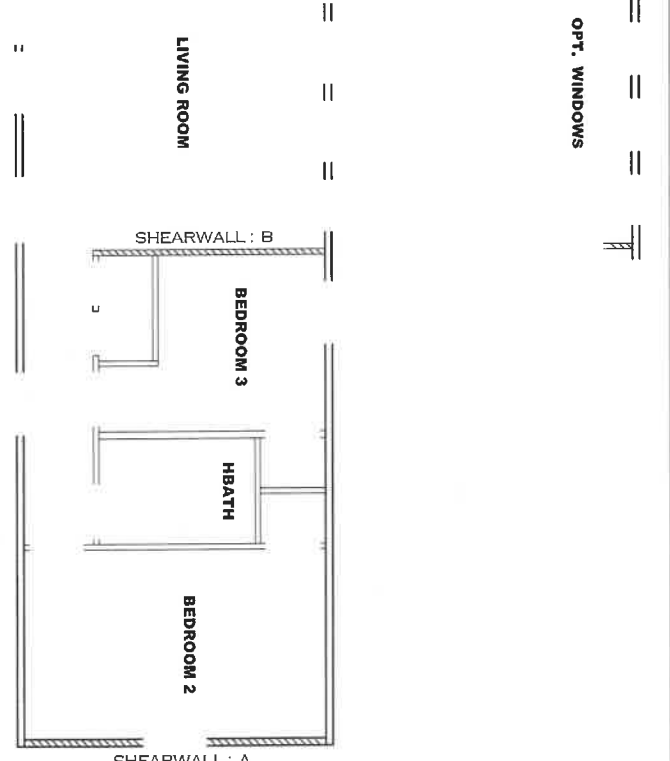
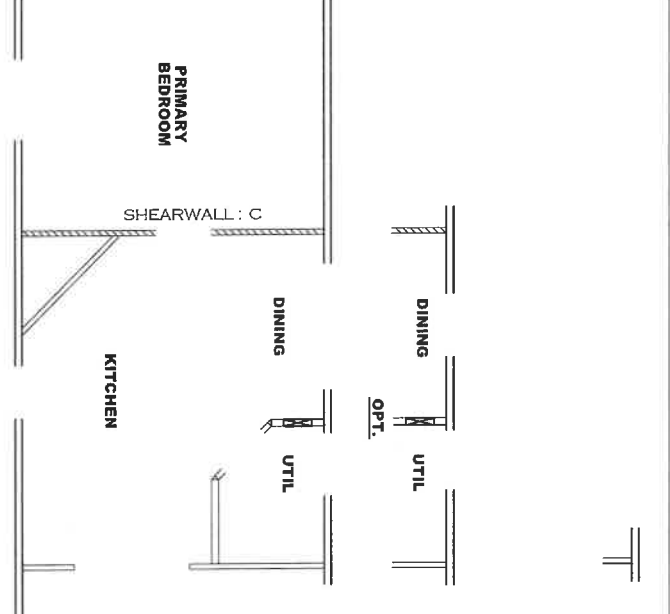
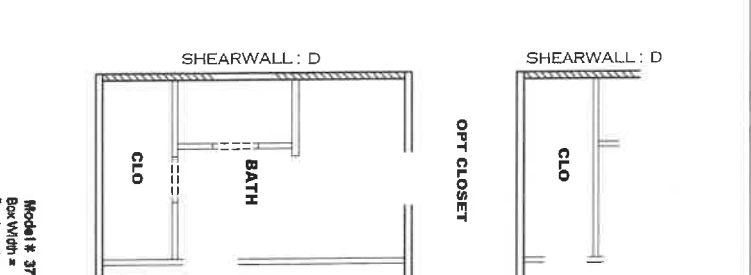
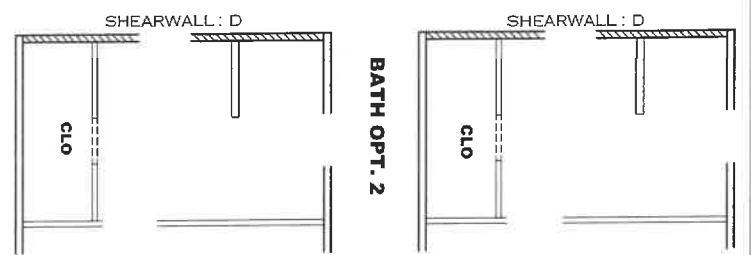
Product Designer: J PIPES

Model #: ANN16763E	Drawing #:
Date: 07/26/23	Scale: N.T.S.
16' x 76' Anniversary Entertainer	3/5167

**FRAME PIERS**







Model # 379167  
 Box Width = 190" Single wide  
 Box Length = 76" 89.5" 12" MAIN BEAM  
 No Skylights  
 No Porches  
 Joist Size = #2 sq 2x6  
 Lags 5x6x3"  
 Minimum Joist Spacing 16"  
 No Chirst Box  
 No Cemetery  
 No Distant Downer  
 No Sunken Floor  
 No Parapet Roof

**Version R14.00**

Wind Zone 1 Standard Roof  
 7/16" Rated Sheathing and Ceiling Board with 19 ga  
 studs @ 6/12 (26x319) Chords, 2x4 SRF #3 Top  
 Pails spaced w/2x4 MCP & 2x3 SRF Ral spaced w/  
 2x4 MCP  
 96 inch sidewall

Shearwall	Dir/Htch	Length	PLF	# of Joists	Lags	Notes	Block Dim. X=0'	% over
A	0"	135.5"	162	2	2/2	Split Shearwall *	5W1/SW2	0.37
B	23.42"	128"	430	3	4/1	Split Shearwall *	67.7x67.75	
C	54.42"	140.5"	430	3	4/1	Split Shearwall	78.5x84	
D	76"	141.5"	182	2	2/2	Split Shearwall	66.7x74.75	

Wind Zone 3 Standard Roof  
 7/16" Rated Sheathing and Ceiling Board with 19 ga  
 studs @ 6/12 (26x319) Chords, 2x4 SRF #3 Top  
 Pails spaced w/2x4 MCP & 2x3 SRF Ral spaced w/  
 2x4 MCP  
 96 inch sidewall

Shearwall	Dir/Htch	Length	PLF	# of Joists	Lags	Notes	Block Dim. X=0'
A	0"	135.5"	350	2	3/3	Split Shearwall *	67.7x67.75
B	23.42"	128"	520	4	5/2	Split Shearwall *	67.7x67.75
C	54.42"	140.5"	430	3	4/1	Split Shearwall	78.5x84
D	76"	141.5"	350	3	3/3	Split Shearwall	66.7x74.75

Wind Zone 1 Standard Roof  
 7/16" Rated Sheathing and Ceiling Board with 19 ga  
 studs @ 6/12 (26x319) Chords, 2x4 SRF #3 Top  
 Pails spaced w/2x4 MCP & 2x3 SRF Ral spaced w/  
 2x4 MCP  
 96 inch sidewall

Shearwall	Dir/Htch	Length	PLF	# of Joists	Lags	Notes	Block Dim. X=0'
A	0"	135.5"	182	2	2/2	Split Shearwall *	67.7x67.75
B	23.42"	128"	182	2	2/1	Split Shearwall *	67.7x67.75
D	54.42"	141.5"	150	3	1/1	Split Shearwall	66.7x74.75

Diaphragm Construction:

Shearwall	Dir/Htch	Length	PLF	# of Joists	Lags	Notes	Block Dim. X=0'
A	0"	135.5"	182	2	2/2	Split Shearwall *	67.7x67.75
B	23.42"	128"	182	2	2/1	Split Shearwall *	67.7x67.75
D	54.42"	141.5"	150	3	1/1	Split Shearwall	66.7x74.75

**APPROVED**  
 SEP 04 2025  
**HTWG**  
**APPROVED**

Federal Manufactured  
 Home Construction  
 And Safety Standards  
 6

1140 SQ.FT. (STD PLAN "CONDITIONED")  
 1140 SQ.FT. (W/OPT. PORCH/RECESS "CONDITIONED")

Product Designer: Jessica Lambert  
**Clayton Built**  
 Model #: ANNI 6763E  
 Date: 9/23/25  
 Scale: N.T.S.  
 Drawing #: 375167

SHEARWALL PAGE NEW