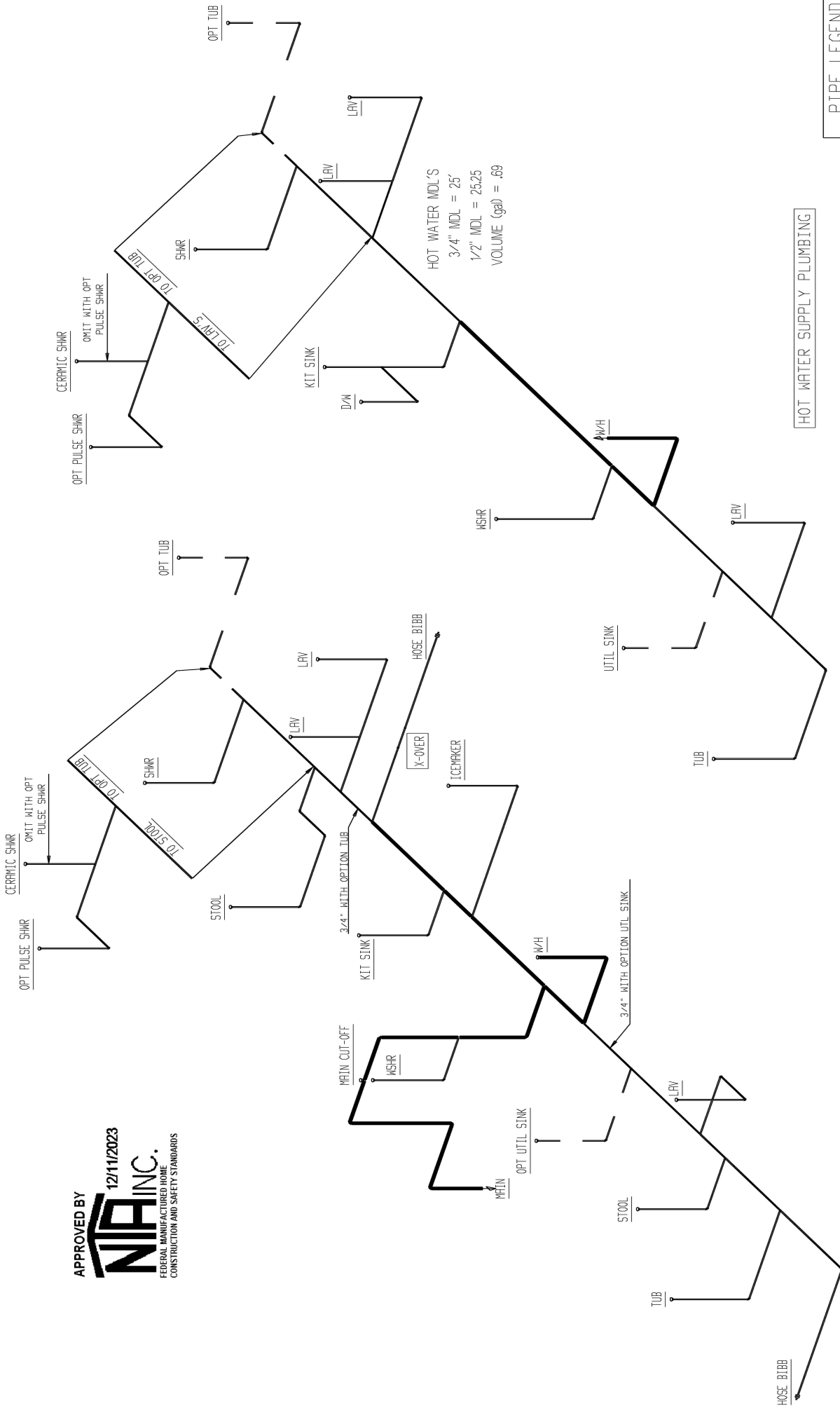


APPROVED BY
MAINC.
 FEDERAL MANUFACTURED HOME
 CONSTRUCTION AND SAFETY STANDARDS



HOT WATER MDL'S
 3/4" MDL = 25'
 1/2" MDL = 25.25
 VOLUME (gal) = .69

HOT WATER SUPPLY PLUMBING

PIPE LEGEND

| | |
|-------|------|
| ===== | 1" |
| ===== | 3/4" |
| ===== | 1/2" |

COLD WATER SUPPLY PLUMBING

957-3030.1

| | | | | | |
|-----------------------------|----------------|---|----------------------------|------------------------------------|-------------------|
| BRAND CLAYTON | SERIES BM28 | DRAWING TITLE SUPPLY PLUMBING | | MODEL NAME 3030 | SO. FT. 1580 |
| | | GENERAL NOTES HOSE BIBBS PER SPECS | | PLANT DESCRIPTION 28X60 3BR-2BA | MODEL NO. 3030 |
| CLAYTON HOME BUILDING GROUP | | APPROVED BY GDB | DATE PRINTED 12/05/2023 | DRAWN BY GDB | SHEET NO. 9-1 |
| | | REVISIONS | BY | DATE | |



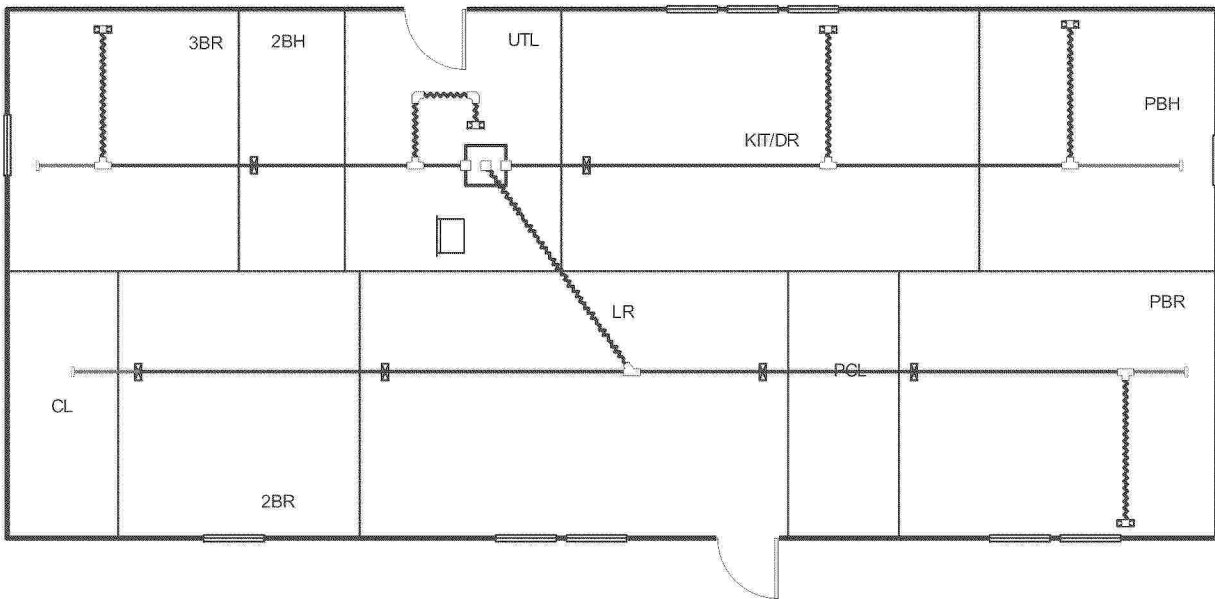
APPROVED BY



12/11/2023

FEDERAL MANUFACTURED HOME
CONSTRUCTION AND SAFETY STANDARDS

Level 1



957-3030.4.1

Job #: 3030(I)
Performed by CLAYTON ROCKWELL for:
3030(I)
ROCKWELL, NC

Scale: 1 : 108
Page 1
Right-Suite® Universal 2023
23.0.04 RSU28036
2023-Dec-05 10:51:34
...layton Homes\Desktop\3030(I).rup



Project Summary

Entire House

APPROVED BY
NIA INC. 12/11/2023
 FEDERAL MANUFACTURED HOME
 CONSTRUCTION AND SAFETY STANDARDS

Job: 3030(I)
 Date: Dec 05, 2023
 By: CLAYTON ROCKWELL

Project Information

For: 3030(I), CLAYTON 957
 ROCKWELL, NC

Notes: DUCT COOLING CAPACITY = 37,100 BTU/HR
 REFER TO MODEL PLAN FOR THERMAL ZONE CALCULATIONS

Design Information

Weather: Fort Bragg/Simmons, NC, US

Winter Design Conditions

Outside db 26 °F
 Inside db 70 °F
 Design TD 44 °F

Summer Design Conditions

Outside db 95 °F
 Inside db 75 °F
 Design TD 20 °F
 Daily range M
 Relative humidity 50 %
 Moisture difference 41 gr/lb

Heating Summary

Structure 15792 Btuh
 Ducts 5796 Btuh
Central vent (60 cfm) **2892** Btuh
Outside air
 Humidification 0 Btuh
 Piping 0 Btuh
 Equipment load 24480 Btuh

Sensible Cooling Equipment Load Sizing

Structure 14182 Btuh
 Ducts 5313 Btuh
Central vent (60 cfm) **1289** Btuh
Outside air
 Blower 0 Btuh
 Use manufacturer's data n
 Rate/swing multiplier 1.00
 Equipment sensible load 20722 Btuh

Infiltration

Method Simplified
 Construction quality Average
 Fireplaces 0

| | Heating | Cooling |
|---------------------------|---------|---------|
| Area (ft ²) | 1575 | 1575 |
| Volume (ft ³) | 12600 | 12600 |
| Air changes/hour | 0.38 | 0.20 |
| Equiv. AVF (cfm) | 86 | 48 |

Latent Cooling Equipment Load Sizing

Structure 2119 Btuh
 Ducts 1082 Btuh
Central vent (60 cfm) **1644** Btuh
Outside air
 Equipment latent load 4844 Btuh
Equipment Total Load (Sen+Lat) 25566 Btuh
 Req. total capacity at 0.70 SHR 2.5 ton

Heating Equipment Summary

Make Smart Comfort
 Trade 15 SEER2 R SERIES R410AHP
 Model R4H5S36*K*AAA*
 AHRI ref 0
 Efficiency 7.5 HSPF2
 Heating input
 Heating output 33000 Btuh @ 47°F
 Temperature rise 27 °F
 Actual air flow 1113 cfm
 Air flow factor 0.052 cfm/Btuh
 Static pressure 0.30 in H2O
 Space thermostat
 Capacity balance point = 21 °F

Cooling Equipment Summary

Make Smart Comfort
 Trade 15 SEER2 R SERIES R410AHP
 Cond R4H5S36*K*AAA*
 Coil FEVA0036**+NAVA43601CK
 AHRI ref 0
 Efficiency 12.0 EER2, 15 SEER2
 Sensible cooling 23380 Btuh
 Latent cooling 10020 Btuh
 Total cooling 33400 Btuh
 Actual air flow 1113 cfm
 Air flow factor 0.057 cfm/Btuh
 Static pressure 0.30 in H2O
 Load sensible heat ratio 0.81

Backup: Smart Comfort
 Input = 10 kW, Output = 34121 Btuh, 100 AFUE

957-3030.4.2

Bold/italic values have been manually overridden

Calculations approved by ACCA to meet all requirements of Manual J 8th Ed.



wrightsoft

Right-Suite® Universal 2023 23.0.04 RSU28036

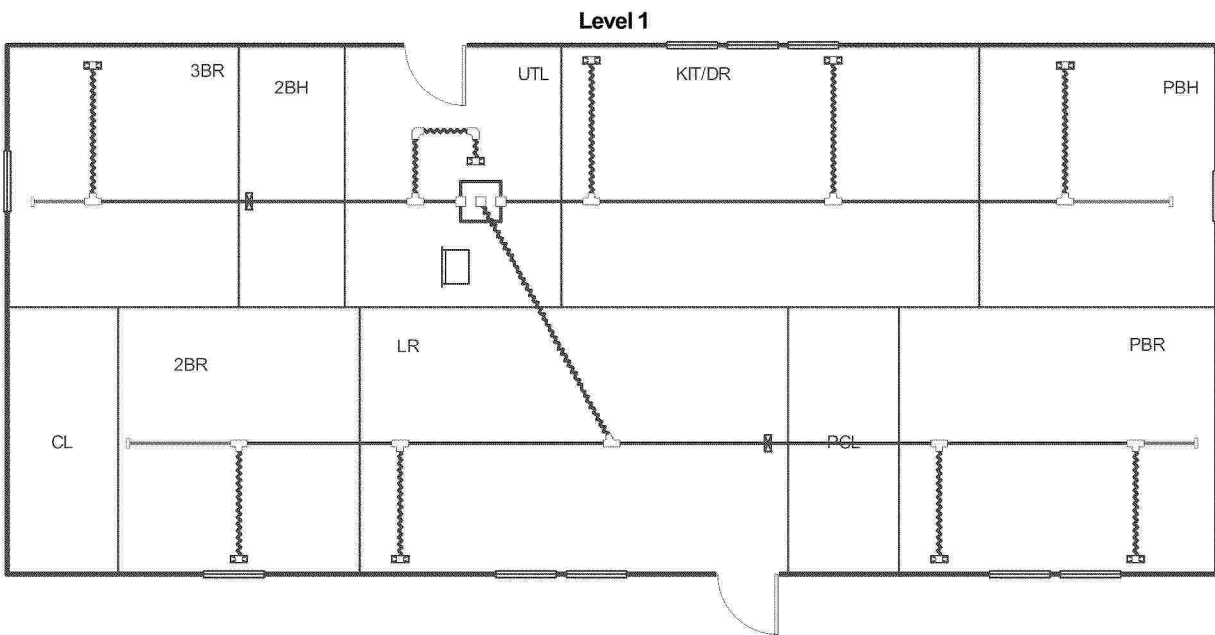
...ug\OneDrive - Clayton Homes\Desktop\3030(I).rup Calc = MJ8 Front Doorfaces: N

2023-Dec-05 10:51:22

Page 1



APPROVED BY
NIA INC. 12/11/2023
FEDERAL MANUFACTURED HOME
CONSTRUCTION AND SAFETY STANDARDS



957-3030.4.3

Job #: 3030(P)
Performed by **CLAYTON ROCKWELL** for:
3030(P)
ROCKWELL, NC

Scale: 1 : 108
Page 1
Right-Suite® Universal 2023
23.0.04 RSU28036
2023-Dec-05 10:23:13
...layton Homes\Desktop\3030(P).rup



Project Summary

Entire House

APPROVED BY
NIA INC. 12/11/2023
 FEDERAL MANUFACTURED HOME
 CONSTRUCTION AND SAFETY STANDARDS

Job: 3030(P)
 Date: Dec 05, 2023
 By: CLAYTON ROCKWELL

Project Information

For: 3030(P), CLAYTON 957
 ROCKWELL, NC

Notes: DUCT COOLING CAPACITY = 37,100 BTU/HR
 REFER TO MODEL PLAN FOR THERMAL ZONE CALCULATIONS

Design Information

Weather: Fort Bragg/Simmons, NC, US

Winter Design Conditions

Outside db 26 °F
 Inside db 70 °F
 Design TD 44 °F

Summer Design Conditions

Outside db 95 °F
 Inside db 75 °F
 Design TD 20 °F
 Daily range M
 Relative humidity 50 %
 Moisture difference 41 gr/lb

Heating Summary

Structure 15792 Btuh
 Ducts 5796 Btuh
Central vent (60 cfm) **2892** Btuh
Outside air
 Humidification 0 Btuh
 Piping 0 Btuh
 Equipment load 24480 Btuh

Sensible Cooling Equipment Load Sizing

Structure 14182 Btuh
 Ducts 5313 Btuh
Central vent (60 cfm) **1289** Btuh
Outside air
 Blower 0 Btuh
 Use manufacturer's data n
 Rate/swing multiplier 1.00
 Equipment sensible load 20722 Btuh

Infiltration

Method Simplified
 Construction quality Average
 Fireplaces 0

Latent Cooling Equipment Load Sizing

Structure 2119 Btuh
 Ducts 1082 Btuh
Central vent (60 cfm) **1644** Btuh
Outside air
 Equipment latent load 4844 Btuh

| | Heating | Cooling |
|---------------------------|---------|---------|
| Area (ft ²) | 1575 | 1575 |
| Volume (ft ³) | 12600 | 12600 |
| Air changes/hour | 0.38 | 0.20 |
| Equiv. AVF (cfm) | 86 | 48 |

Equipment Total Load (Sen+Lat) 25566 Btuh
 Req. total capacity at 0.70 SHR 2.5 ton

Heating Equipment Summary

Make Smart Comfort
 Trade 15 SEER2 R SERIES R410AHP
 Model R4H5S36*K*AAA*
 AHRI ref 0
 Efficiency 7.5 HSPF2
 Heating input
 Heating output 33000 Btuh @ 47°F
 Temperature rise 27 °F
 Actual air flow 1113 cfm
 Air flow factor 0.052 cfm/Btuh
 Static pressure 0.30 in H2O
 Space thermostat
 Capacity balance point = 21 °F

Cooling Equipment Summary

Make Smart Comfort
 Trade 15 SEER2 R SERIES R410AHP
 Cond R4H5S36*K*AAA*
 Coil FEVA0036**+NAVA43601CK
 AHRI ref 0
 Efficiency 12.0 EER2, 15 SEER2
 Sensible cooling 23380 Btuh
 Latent cooling 10020 Btuh
 Total cooling 33400 Btuh
 Actual air flow 1113 cfm
 Air flow factor 0.057 cfm/Btuh
 Static pressure 0.30 in H2O
 Load sensible heat ratio 0.81

Backup: Smart Comfort
 Input = 10 kW, Output = 34121 Btuh, 100 AFUE

957-3030.4.4

Bold/italic values have been manually overridden

Calculations approved by ACCA to meet all requirements of Manual J 8th Ed.



wrightsoft

Right-Suite® Universal 2023 23.0.04 RSU28036

...ug\OneDrive - Clayton Homes\Desktop\3030(P).rup Calc = MJ8 Front Door faces: N

2023-Dec-05 10:22:55

Page 1



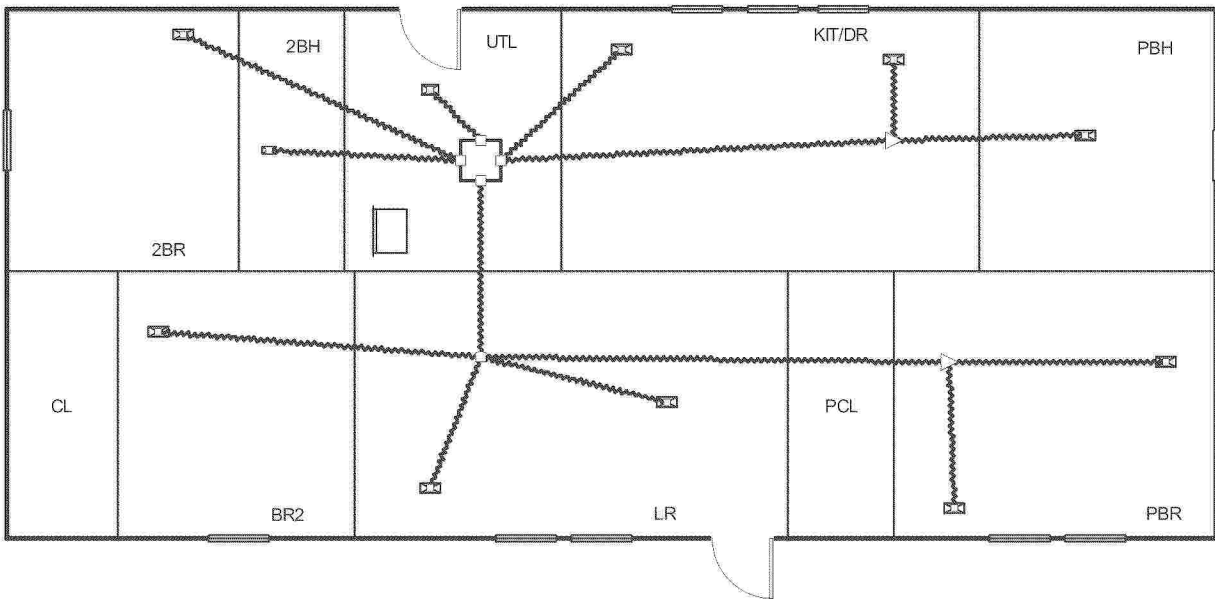
APPROVED BY



12/11/2023

FEDERAL MANUFACTURED HOME
CONSTRUCTION AND SAFETY STANDARDS

Level 1



957-3030.4.5

Job #: 3030(OHVD)
Performed by CLAYTON ROCKWELL for:
CLAYTON 957
ROCKWELL, NC

Scale: 1 : 108
Page 1
Right-Suite® Universal 2023
23.0.04 RSU28036
2023-Dec-05 11:24:44
...ton Homes\Desktop\3030(OHVD).r...



Project Summary
Entire House



Job: 3030(OHVD)
Date: Dec 05, 2023
By: CLAYTON ROCKWELL

Project Information

For: CLAYTON 957
ROCKWELL, NC

Notes: DUCT COOLING CAPACITY = 30,667 BTU/HR
REFER TO MODEL PLAN FOR THERMAL ZONE CALCULATIONS

Design Information

Weather: SC 55

Winter Design Conditions

Outside db 28 °F
Inside db 70 °F
Design TD 42 °F

Summer Design Conditions

Outside db 95 °F
Inside db 75 °F
Design TD 20 °F
Daily range M
Relative humidity 50 %
Moisture difference 34 gr/lb

Heating Summary

Structure 14903 Btuh
Ducts 3982 Btuh
Central vent (60 cfm) **2731** Btuh
Outside air
Humidification 0 Btuh
Piping 0 Btuh
Equipment load 21616 Btuh

Sensible Cooling Equipment Load Sizing

Structure 14211 Btuh
Ducts 3656 Btuh
Central vent (60 cfm) **1303** Btuh
Outside air
Blower 0 Btuh
Use manufacturer's data n
Rate/swing multiplier 1.00
Equipment sensible load 19151 Btuh

Infiltration

Method Simplified
Construction quality Average
Fireplaces 0

Latent Cooling Equipment Load Sizing

Structure 1912 Btuh
Ducts 739 Btuh
Central vent (60 cfm) **1385** Btuh
Outside air
Equipment latent load 4036 Btuh

| | Heating | Cooling |
|---------------------------|---------|---------|
| Area (ft ²) | 1575 | 1575 |
| Volume (ft ³) | 12600 | 12600 |
| Air changes/hour | 0.38 | 0.20 |
| Equiv. AVF (cfm) | 86 | 48 |

Equipment Total Load (Sen+Lat) 23186 Btuh
Req. total capacity at 0.70 SHR 2.3 ton

Heating Equipment Summary

Make Smart Comfort
Trade 15 SEER2 R SERIES R410AHP
Model R4H5S30*K*AAA*
AHRI ref 0
Efficiency 7.5 HSPF2
Heating input
Heating output 28000 Btuh @ 47°F
Temperature rise 28 °F
Actual air flow 920 cfm
Air flow factor 0.049 cfm/Btuh
Static pressure 0.30 in H2O
Space thermostat
Capacity balance point = 24 °F

Cooling Equipment Summary

Make Smart Comfort
Trade 15 SEER2 R SERIES R410AHP
Cond R4H5S30*K*AAA*
Coil FEVA0036**+NAVA43601CK
AHRI ref 0
Efficiency 12.0 EER2, 14.3 SEER2
Sensible cooling 19320 Btuh
Latent cooling 8280 Btuh
Total cooling 27600 Btuh
Actual air flow 920 cfm
Air flow factor 0.051 cfm/Btuh
Static pressure 0.30 in H2O
Load sensible heat ratio 0.83

Backup: Smart Comfort
Input = 10 kW, Output = 34121 Btuh, 100 AFUE

957-3030.4.6

Bold/italic values have been manually overridden

Calculations approved by ACCA to meet all requirements of Manual J 8th Ed.



CLAYTON HOME BUILDING GROUP

3030 ZN 1 & 2

| | | | | |
|--------------|----------------|----------------|------|------------|
| Model Number | 57FWY28603AH24 | Drawing Number | 3030 | Version 14 |
|--------------|----------------|----------------|------|------------|

BOX SIZE: 26.33 ft. x 60 ft.

AVG. SIDEWALL HEIGHT = 8 FEET

PERCENTAGE OF CEILING THAT IS VAULTED = 0%

12 INCH DIAMETER XOVER DUCT AREA = 78.5 SQ.FT. MAX. WITH R-8 INSULATION

IN-FLOOR DUCT SYSTEM

| | UNHEATED FLOOR | WALL | FLAT ROOF |
|--------------------------------|----------------|---------|-----------|
| INSULATION VALUES | R-22 FW | R-13 | R-38 |
| DAPIA PAGE | THP-161 | THP-552 | THP-1484 |
| U VALUE (BTUH/SQ.FT.-F) | 0.0445 | 0.0808 | 0.0285 |

| Overhead Duct | |
|-----------------|--------|
| Diameter | Length |
| 4 | 0 |
| 5 | 0 |
| 6 | 0 |
| 7 | 0 |
| 8 | 0 |
| 9 | 0 |
| 10 | 0 |
| 11 | 0 |
| 14 | 0 |
| Exterior Supply | Length |
| 14 | 0 |
| 16 | 0 |
| Exterior Return | Length |
| 14 | 0 |
| 16 | 0 |



Doors:

| | Area | U Value | UA |
|-----------------------|---------|---------|-------|
| Front | 22.00 | 0.210 | 4.62 |
| Rear | 22.00 | 0.280 | 6.16 |
| Other Door | 0.00 | 0.330 | 0.00 |
| Other Door | 0.00 | 0.330 | 0.00 |
| OSB | 0.00 | 0.000 | 0.00 |
| Skylights | 0.00 | 0.330 | 0.00 |
| Standard | 154.00 | 0.300 | 46.20 |
| Option | 0.00 | 0.300 | 0.00 |
| Net: Floor | 1580.00 | 0.045 | 70.31 |
| Wall | 1183.33 | 0.081 | 95.61 |
| Ceiling | 1580.00 | 0.0285 | 45.03 |
| Th. Zone 1: Ext. Duct | 78.50 | 0.242 | 18.98 |
| Th. Zone 2: Ext. Duct | 78.50 | 0.223 | 17.48 |
| Th. Zone 3: Ext. Duct | 78.50 | 0.206 | 16.14 |
| Overhead TZ 1: Supply | 0.00 | 0.000 | 0.00 |
| Overhead TZ 2: Supply | 0.00 | 0.000 | 0.00 |
| Overhead TZ 3: Supply | 0.00 | 0.00 | 0.00 |

Window Glass Area:

Net:

Th. Zone 1:

Th. Zone 2:

Th. Zone 3:

Overhead TZ 1:

Overhead TZ 2:

Overhead TZ 3:

| Energy Star v3 & ZERH Max Glass (sq ft) | |
|---|-------|
| Th. Zone 1 | 329.7 |
| Th. Zone 2 | 189.0 |
| Th. Zone 3 | 5.4 |

| Thermal Zone | Outdoor Design Temp (F) | UA | Uo | EStar v3 & ZERH Compliant | Heatloss BTUH/F |
|--------------|-------------------------|--------|--------|---------------------------|-----------------|
| | 1 | 11 | 286.92 | 0.062 | OK |
| 2 | 0 | 285.41 | 0.062 | OK | 406.30 |
| 3 | -14 | 284.07 | 0.061 | NG | 404.90 |

Design Temperatures

| Furnace Heating Temp (F) | Economy Outdoor Temp (F) | |
|--------------------------|--------------------------|---------|
| -14 | 11 | 10kW |
| -30 | 0 | 12kW |
| -56 | -18 | 15kW |
| -28 | 1 | 40k Gas |
| -77 | -33 | 60k Gas |
| -126 | -67 | 80k Gas |

| Thermal Zone | U-Value | Thermal Zone | U-Value | Thermal Zone | U-Value |
|------------------------------|---------|--------------|---------|--------------|---------|
| Energy Star Version 2 | | | | | |
| 1-EHP-S | 0.080 | 2-EHP-S | 0.080 | 3-EHP-S | 0.079 |
| 1-GAS-S | 0.080 | 2-GAS-S | 0.080 | 3-GAS-S | 0.071 |
| 1-ENV-S | 0.076 | 2-ENV-S | 0.067 | 3-ENV-S | 0.059 |
| 1-EHP-M | 0.074 | 2-EHP-M | 0.074 | 3-EHP-M | 0.074 |
| 1-GAS-M | 0.074 | 2-GAS-M | 0.074 | 3-GAS-M | 0.065 |
| 1-ENV-M | 0.071 | 2-ENV-M | 0.064 | 3-ENV-M | 0.056 |

| Energy Star Version 3 & ZERH | | | | | |
|------------------------------|-------|----------|-------|----------|-------|
| 1 Single | 0.076 | 2 Single | 0.065 | 3 Single | 0.057 |
| 1 Double | 0.070 | 2 Double | 0.063 | 3 Double | 0.054 |

CLAYTON HOME BUILDING GROUP

3030 ZN 3

| | | | | |
|--------------|----------------|----------------|------|------------|
| Model Number | 57FWY28603AH24 | Drawing Number | 3030 | Version 14 |
|--------------|----------------|----------------|------|------------|

BOX SIZE: 26.33 ft. x 60 ft.

AVG. SIDEWALL HEIGHT = 8 FEET

PERCENTAGE OF CEILING THAT IS VAULTED = 0%

12 INCH DIAMETER XOVER DUCT AREA = 78.5 SQ.FT. MAX. WITH R-8 INSULATION

IN-FLOOR DUCT SYSTEM

| | UNHEATED FLOOR | WALL | FLAT ROOF |
|--------------------------------|------------------------|---------|-----------|
| INSULATION VALUES | (2) R-11 OR / R-33 BIB | R-21 | R-38 |
| DAPIA PAGE | THP-3001 | THP-560 | THP-1484 |
| U VALUE (BTUH/SQ.FT.-F) | 0.0371 | 0.0541 | 0.0285 |

| Overhead Duct | |
|-----------------|--------|
| Diameter | Length |
| 4 | 0 |
| 5 | 0 |
| 6 | 0 |
| 7 | 0 |
| 8 | 0 |
| 9 | 0 |
| 10 | 0 |
| 11 | 0 |
| 14 | 0 |
| Exterior Supply | Length |
| 14 | 0 |
| 16 | 0 |
| Exterior Return | Length |
| 14 | 0 |
| 16 | 0 |



Window Glass Area:

Th. Zone 1:
Th. Zone 2:
Th. Zone 3:
Overhead TZ 1:
Overhead TZ 2:
Overhead TZ 3:

| | Area | U Value | UA |
|---------------|---------|---------|-------|
| Doors: | | | |
| Front | 22.00 | 0.210 | 4.62 |
| Rear | 22.00 | 0.280 | 6.16 |
| Other Door | 0.00 | 0.330 | 0.00 |
| Other Door | 0.00 | 0.330 | 0.00 |
| OSB | 0.00 | 0.000 | 0.00 |
| Skylights | 0.00 | 0.330 | 0.00 |
| Standard | 154.00 | 0.300 | 46.20 |
| Option | 0.00 | 0.300 | 0.00 |
| Net: | | | |
| Floor | 1580.00 | 0.037 | 58.62 |
| Wall | 1183.33 | 0.054 | 64.02 |
| Ceiling | 1580.00 | 0.0285 | 45.03 |
| Ext. Duct | 78.50 | 0.242 | 18.98 |
| Ext. Duct | 78.50 | 0.223 | 17.48 |
| Ext. Duct | 78.50 | 0.206 | 16.14 |
| Supply | 0.00 | 0.000 | 0.00 |
| Supply | 0.00 | 0.000 | 0.00 |
| Supply | 0.00 | 0.00 | 0.00 |

| Energy Star v3 & ZERH Max Glass (sq ft) | |
|--|-------|
| Th. Zone 1 | 486.6 |
| Th. Zone 2 | 361.2 |
| Th. Zone 3 | 197.6 |

| Thermal Zone | Outdoor Design Temp (F) | UA | Uo | EStar v3 & ZERH Compliant | Heatloss BTUH/F |
|-----------------|-------------------------------|--------|--------|---------------------------------|--------------------|
| | 1 | 11 | 243.63 | 0.053 | OK |
| 2 | 0 | 242.13 | 0.052 | OK | 363.00 |
| 3 | -14 | 240.78 | 0.052 | OK | 361.60 |

Design Temperatures

| Furnace Heating Temp (F) | Economy Outdoor Temp (F) | |
|--------------------------------|--------------------------------|---------|
| -24 | 4 | 10kW |
| -42 | -9 | 12kW |
| -70 | -28 | 15kW |
| -40 | -7 | 40k Gas |
| -95 | -45 | 60k Gas |
| -149 | -84 | 80k Gas |

| Thermal Zone | U-Value | Thermal Zone | U-Value | Thermal Zone | U-Value |
|-----------------------|---------|-----------------|---------|-----------------|---------|
| Energy Star Version 2 | | | | | |
| 1-EHP-S | 0.080 | 2-EHP-S | 0.080 | 3-EHP-S | 0.079 |
| 1-GAS-S | 0.080 | 2-GAS-S | 0.080 | 3-GAS-S | 0.071 |
| 1-ENV-S | 0.076 | 2-ENV-S | 0.067 | 3-ENV-S | 0.059 |
| 1-EHP-M | 0.074 | 2-EHP-M | 0.074 | 3-EHP-M | 0.074 |
| 1-GAS-M | 0.074 | 2-GAS-M | 0.074 | 3-GAS-M | 0.065 |
| 1-ENV-M | 0.071 | 2-ENV-M | 0.064 | 3-ENV-M | 0.056 |

| Energy Star Version 3 & ZERH | | | | | |
|------------------------------|-------|----------|-------|----------|-------|
| 1 Single | 0.076 | 2 Single | 0.065 | 3 Single | 0.057 |
| 1 Double | 0.070 | 2 Double | 0.063 | 3 Double | 0.054 |

CLAYTON HOME BUILDING GROUP

3030 ZN 1 WITH OVERHEAD

| | | | | |
|--------------|----------------|----------------|------|------------|
| Model Number | 57FWY28603AH24 | Drawing Number | 3030 | Version 14 |
|--------------|----------------|----------------|------|------------|

BOX SIZE: 26.33 ft. x 60 ft.
 AVG. SIDEWALL HEIGHT = 8 FEET
 PERCENTAGE OF CEILING THAT IS VAULTED = 0%

OVERHEAD DUCT SYSTEM

| | UNHEATED FLOOR | WALL | FLAT ROOF |
|--------------------------------|----------------|---------|-----------|
| INSULATION VALUES | R-22 FW | R-13 | R-38 |
| DAPIA PAGE | THP-161 | THP-552 | THP-1484 |
| U VALUE (BTUH/SQ.FT.-F) | 0.0445 | 0.0808 | 0.0285 |

| Overhead Duct | |
|-----------------|--------|
| Diameter | Length |
| 4 | 0 |
| 5 | 10 |
| 6 | 77 |
| 7 | 16 |
| 8 | 42 |
| 9 | 0 |
| 10 | 0 |
| 12 | 8 |
| 14 | 0 |
| Exterior Supply | Length |
| 14 | 0 |
| 16 | 0 |
| Exterior Return | Length |
| 14 | 0 |
| 16 | 0 |



| | Area | U Value | UA |
|---------------------------|---------|---------|-------|
| Doors: | | | |
| Front | 22.00 | 0.210 | 4.62 |
| Rear | 22.00 | 0.280 | 6.16 |
| Other Door | 0.00 | 0.330 | 0.00 |
| Other Door | 0.00 | 0.330 | 0.00 |
| OSB | 0.00 | 0.000 | 0.00 |
| Skylights | 0.00 | 0.330 | 0.00 |
| Window Glass Area: | | | |
| Standard | 154.00 | 0.300 | 46.20 |
| Option | 0.00 | 0.300 | 0.00 |
| Net: | | | |
| Floor | 1580.00 | 0.045 | 70.31 |
| Wall | 1183.33 | 0.081 | 95.61 |
| Ceiling | 1580.00 | 0.0285 | 45.03 |
| Ext. Duct | 0.00 | 0.000 | 0.00 |
| Ext. Duct | 0.00 | 0.000 | 0.00 |
| Ext. Duct | 0.00 | 0.000 | 0.00 |
| Overhead TZ 1: Supply | 22.36 | 0.242 | 5.41 |
| Overhead TZ 2: Supply | 22.36 | 0.223 | 4.98 |
| Overhead TZ 3: Supply | 22.36 | 0.21 | 4.60 |

| Energy Star v3 & ZERH Max Glass (sq ft) | |
|---|-------|
| Th. Zone 1 | 366.4 |
| Th. Zone 2 | 223.3 |
| Th. Zone 3 | 38.6 |

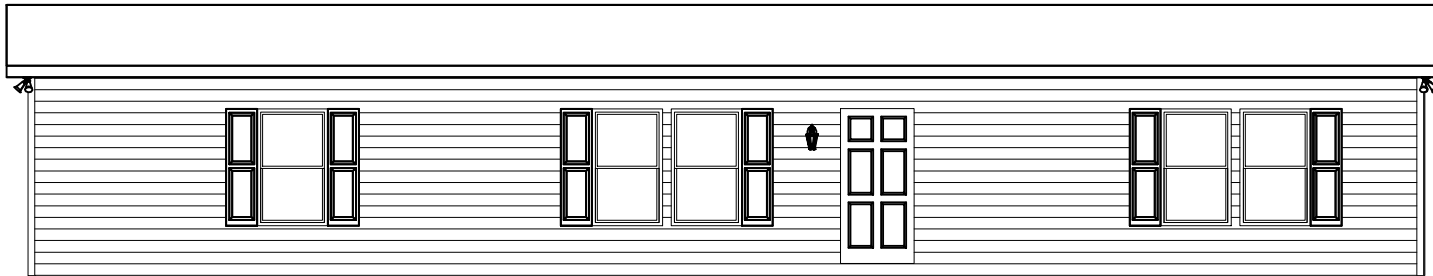
| Thermal Zone | Outdoor Design Temp (F) | UA | Uo | EStar v3 & ZERH | |
|--------------|-------------------------|--------|-------|-----------------|-----------------|
| | | | | Compliant | Heatloss BTUH/F |
| 1 | 11 | 273.34 | 0.060 | OK | 394.20 |
| 2 | 0 | 272.91 | 0.060 | OK | 393.80 |
| 3 | -14 | 272.53 | 0.060 | NG | 393.40 |

Design Temperatures

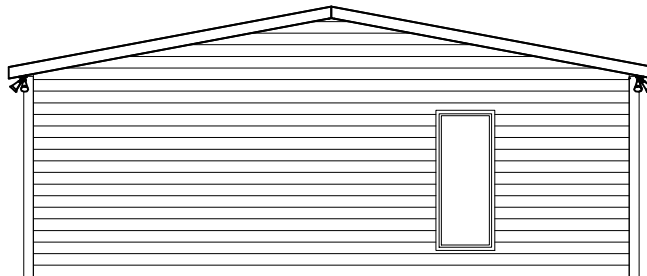
| Furnace Heating Temp (F) | Economy Outdoor Temp (F) | |
|--------------------------|--------------------------|---------|
| -17 | 9 | 10kW |
| -34 | -3 | 12kW |
| -60 | -21 | 15kW |
| -31 | -1 | 40k Gas |
| -82 | -37 | 60k Gas |
| -133 | -72 | 80k Gas |

| Thermal Zone | U-Value | Thermal Zone | U-Value | Thermal Zone | U-Value |
|-----------------------|---------|--------------|---------|--------------|---------|
| Energy Star Version 2 | | | | | |
| 1-EHP-S | 0.080 | 2-EHP-S | 0.080 | 3-EHP-S | 0.079 |
| 1-GAS-S | 0.080 | 2-GAS-S | 0.080 | 3-GAS-S | 0.071 |
| 1-ENV-S | 0.076 | 2-ENV-S | 0.067 | 3-ENV-S | 0.059 |
| 1-EHP-M | 0.074 | 2-EHP-M | 0.074 | 3-EHP-M | 0.074 |
| 1-GAS-M | 0.074 | 2-GAS-M | 0.074 | 3-GAS-M | 0.065 |
| 1-ENV-M | 0.071 | 2-ENV-M | 0.064 | 3-ENV-M | 0.056 |

| Energy Star Version 3 & ZERH | | | | | |
|------------------------------|-------|----------|-------|----------|-------|
| 1 Single | 0.076 | 2 Single | 0.065 | 3 Single | 0.057 |
| 1 Double | 0.070 | 2 Double | 0.063 | 3 Double | 0.054 |

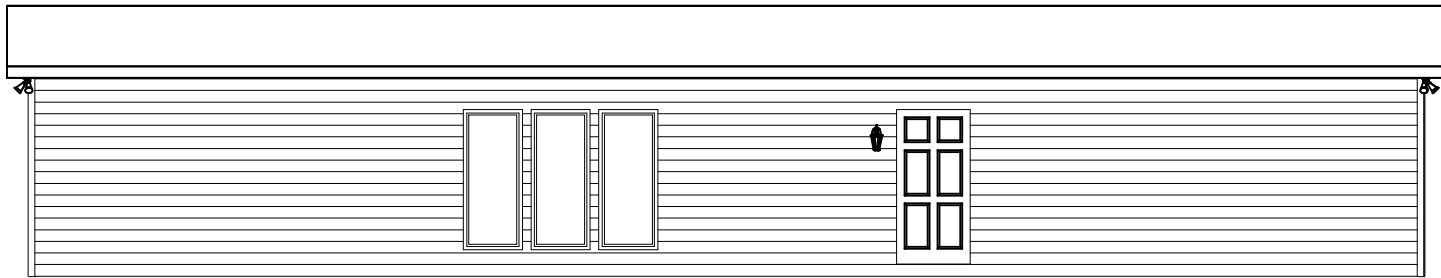


FRONT ELEVATION

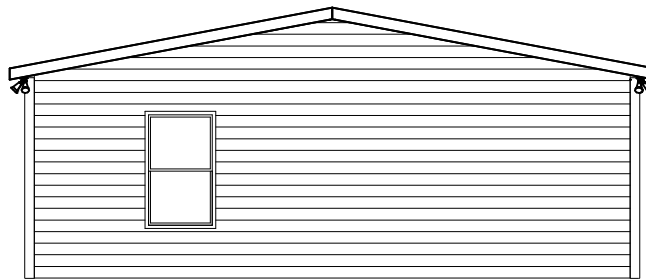


RIGHT SIDE ELEVATION

| | | | | | | | | | | |
|-----------------------------|----------------|-----------|----|------|---------------|---|--------------------|------------------------------|----------------------------|-------------------|
| BRAND CLAYTON | SERIES BM28 | REVISIONS | BY | DATE | GENERAL NOTES | DRAWING TITLE EXTERIOR ELEVATION FRONT & RIGHT SIDE | MODEL NAME 3030 | SQ. FT. 1580 | | |
| CLAYTON HOME BUILDING GROUP | | | | | | | PLANT 957 | DESCRIPTION 28X60 3BR-2BA | MODEL NO. 3030 | |
| | | | | | | | DRAWN BY GDB | ORIG. DATE 11/30/2023 | DATE PRINTED 12/11/2023 | SHEET NO. 20-1 |

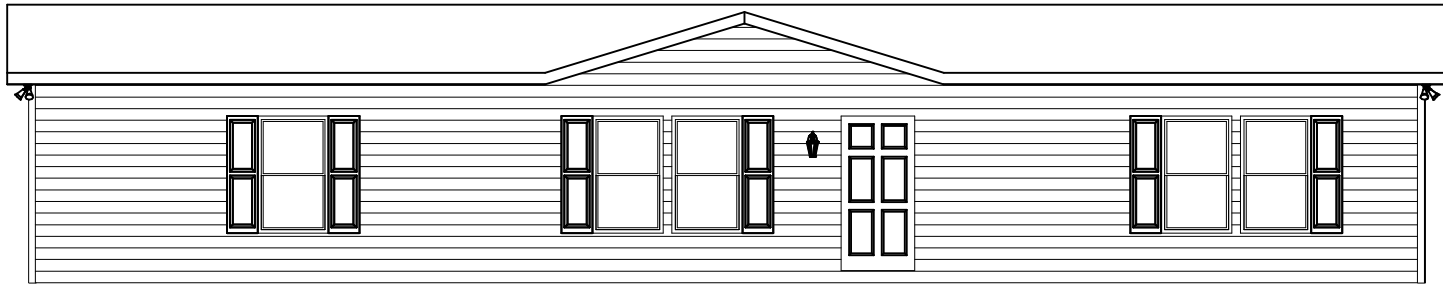


BACK ELEVATION

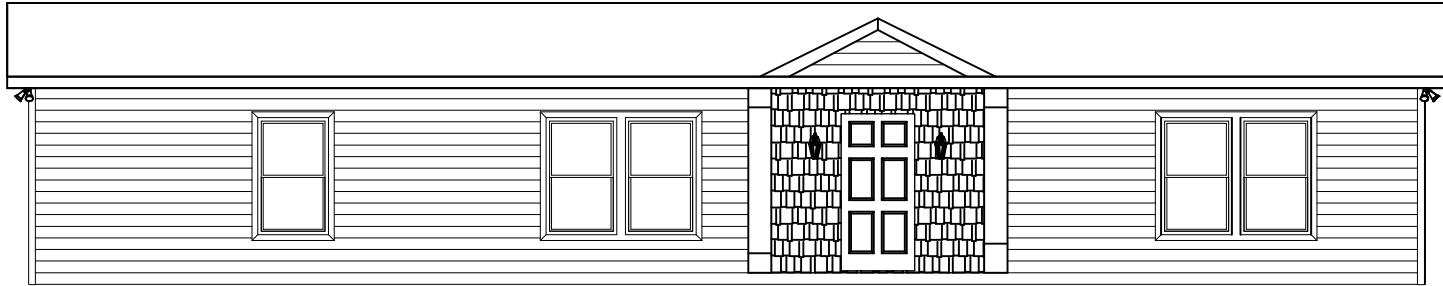


LEFT SIDE ELEVATION

| | | | | | | | | | | |
|-----------------------------|----------------|-----------|----|------|---------------|---|--------------------|------------------------------|----------------------------|-------------------|
| BRAND CLAYTON | SERIES BM28 | REVISIONS | BY | DATE | GENERAL NOTES | DRAWING TITLE EXTERIOR ELEVATION BACK & LEFT SIDE | MODEL NAME 3030 | SQ. FT. 1580 | | |
| CLAYTON HOME BUILDING GROUP | | | | | | | PLANT 957 | DESCRIPTION 28X60 3BR-2BA | MODEL NO. 3030 | |
| | | | | | | | DRAWN BY GDB | ORIG. DATE 11/30/2023 | DATE PRINTED 12/11/2023 | SHEET NO. 20-2 |

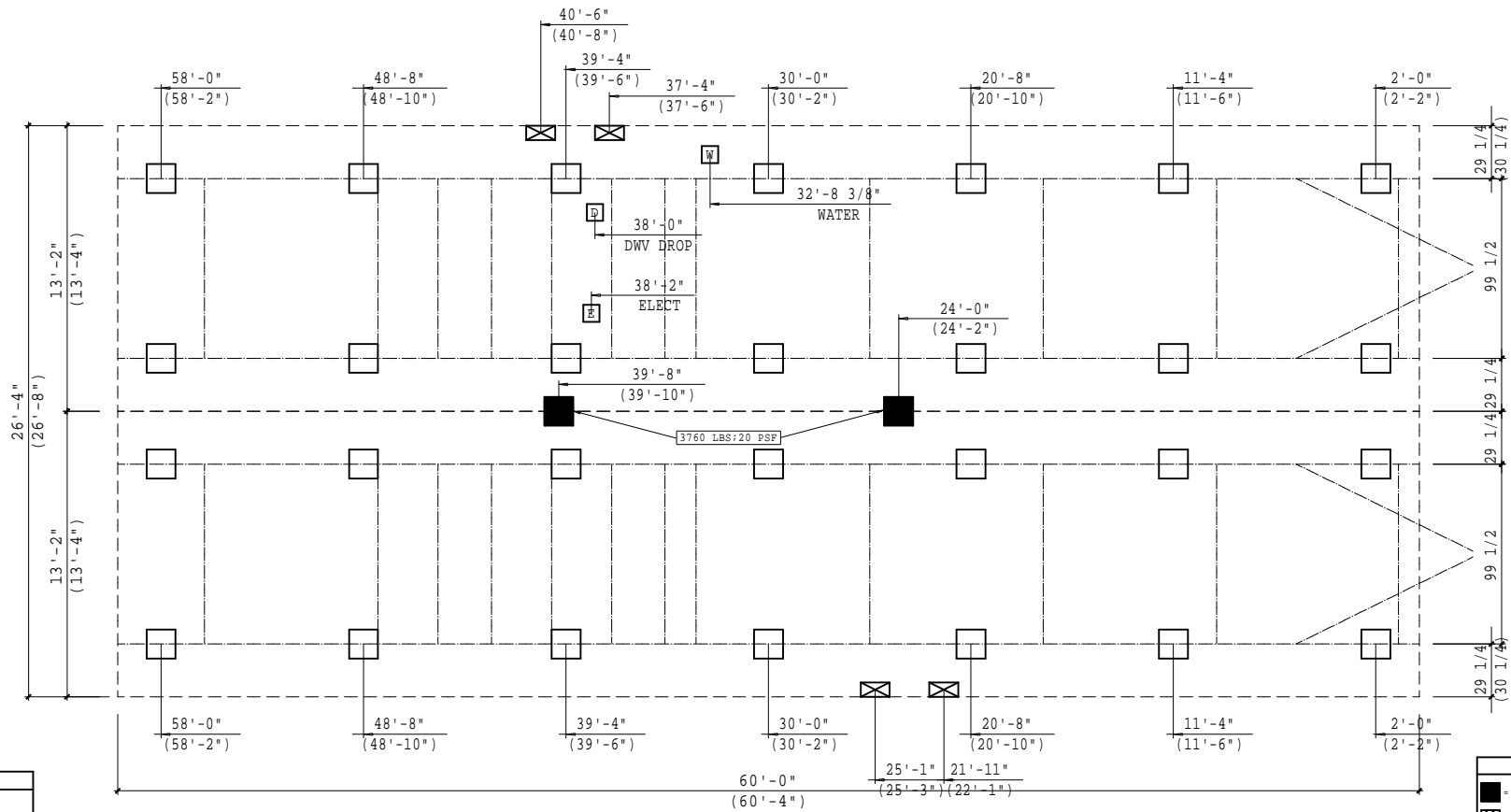


FRONT EXTERIOR ELEVATION WITH 16' DORMER OPTION



FRONT EXTERIOR ELEVATION WITH 10' DORMER OPTION

| | | | | | | | | |
|-----------------------------|----------------|-----------|----|------|---------------|---|----------------------------|------------------------------|
| BRAND CLAYTON | SERIES BM28 | REVISIONS | BY | DATE | GENERAL NOTES | DRAWING TITLE EXTERIOR ELEVATION OPTION 3 | MODEL NAME 3030 | SQ. FT. 1580 |
| CLAYTON HOME BUILDING GROUP | | | | | | | PLANT 957 | DESCRIPTION 28X60 3BR-2BA |
| | | | | | | | MODEL NO. 3030 | SHEET NO. 20-5 |
| | | | | | | | DRAWN BY GDB | ORIG. DATE 11/30/2023 |
| | | | | | | | DATE PRINTED 12/11/2023 | |



SERVICE ENTRANCE LEGEND

[E] = ELECTRICAL DROP
 [W] = WATER INLET
 [D] = DWV PLUMBING DROP
 [G] = GAS INLET

NOTE:
 ALL LOCATIONS ARE APPROXIMATE

PIER LEGEND

■ = SUPPORT AT MATING COLUMN
 ▨ = SUPPORT UNDER MATING WALL
 □ = SUPPORT UNDER MATING OPENING
 ◼ = SUPPORT AT PORCH/RECESSED ENTRY
 □ = SUPPORT UNDER MAIN I-BEAM
 ⊗ = SUPPORT UNDER PERIMETER WALL
 ● = SUPPORT AT CROSS I-BEAM BASEMENT

CRANKSPACE VENTILATION
 VENTILATION IS BASED ON 144 SQ. IN. OF VENT FOR EVERY 300 SQ. FT. OF CRANKSPACE AREA WITH APPROVED VAPOR RETARDER MATERIAL. ONE SUCH VENT MUST BE WITHIN 3 FT. OF EACH CORNER

1580 SQ. FT. OF CRANKSPACE AREA
 555 SQ. IN. OF VENT REQUIRED
 15 VENTS NEEDED @ 52 SQ. IN. EACH
 780 SQ. IN. VENTILATION INSTALLED MINIMUM

NOTE: THE FOUNDATION WIDTH SHOWN 26'-4" IS IDENTICAL TO THE OVERALL FLOOR WIDTH OF THE HOME. THE FOUNDATION MAY BE CONSTRUCTED UP TO 1 1/2" WIDER TO COMPENSATE FOR PRODUCTION AND ASSEMBLY TOLERANCES.

| REVISIONS | BY | DATE |
|-----------|----|------|
| | | |
| | | |
| | | |

GENERAL NOTES

FOOTING SIZES VARY BASED ON SOIL BEARING CAPACITY AND PIER LOADS REFER TO INSTALLATION MANUAL FOR PROPER FOOTING SIZING

() - DIMENSIONS DENOTES 2X6 WALLS OPTION

DRAWING TITLE

PIER SET
99 1/2 BEAM SPACING

| | | | | |
|------------|---------------|--------------|-----------|------|
| MODEL NAME | 3030 | | SQ. FT. | 1580 |
| PLANT | DESCRIPTION | MODEL NO. | | |
| 957 | 28X60 3BR-2BA | 3030 | | |
| DRAWN BY | ORIG. DATE | DATE PRINTED | SHEET NO. | |
| GDB | 11/30/2023 | 12/11/2023 | 21-PS-99 | |